

Geberit 154.440.QC.1

Geberit CleanLine80 Shower Channel Instruction Manual

Model: 154.440.QC.1

1. INTRODUCTION

This manual provides comprehensive instructions for the installation, operation, and maintenance of the Geberit CleanLine80 Shower Channel, Model 154.440.QC.1. Please read these instructions carefully before installation and use to ensure proper function and longevity of the product. This shower channel is designed for efficient water drainage in floor-level showers.

2. PRODUCT OVERVIEW

2.1 Key Features

- Designed for floor-level shower drainage.
- Suitable for installation within the room or against a wall.
- Compatible with thin-bed mortar installation.
- Ensures watertightness with composite sealing.
- Ideal for barrier-free construction.
- Quality controlled according to EN 1253-3 standards.
- Features an integrated gradient for efficient drainage.
- The shower channel can be cut to the desired length (30-90cm).
- Adjustable in height, inclination, and offset for precise alignment.
- Designed for easy cleaning.
- Accommodates floor tiles between 10 mm and 35 mm thick.

2.2 Components Included

- Comb insert
- Inlet fitting with balancing ring
- Suction cup
- Sealing collar



Figure 1: Geberit CleanLine80 Shower Channel, polished/black chrome finish.

3. SETUP AND INSTALLATION

The Geberit CleanLine80 Shower Channel is designed for versatile installation in various floor-level shower configurations. It requires a basic installation set for shower channels from the CleanLine series, which must be ordered separately.

3.1 Installation Considerations

- **Location:** Can be installed freely within the room or directly against a wall.
- **Mortar Bed:** Designed for installation in a thin layer of mortar.
- **Sealing:** Ensure proper integration with composite sealing for watertightness.
- **Adjustability:** The channel can be adjusted in height, inclination, and offset to match floor levels and slopes.
- **Length Adjustment:** The shower channel can be cut to a length between 30 cm and 90 cm to fit specific shower dimensions.

- **Tile Thickness:** Suitable for floor tiles with a thickness between 10 mm and 35 mm.

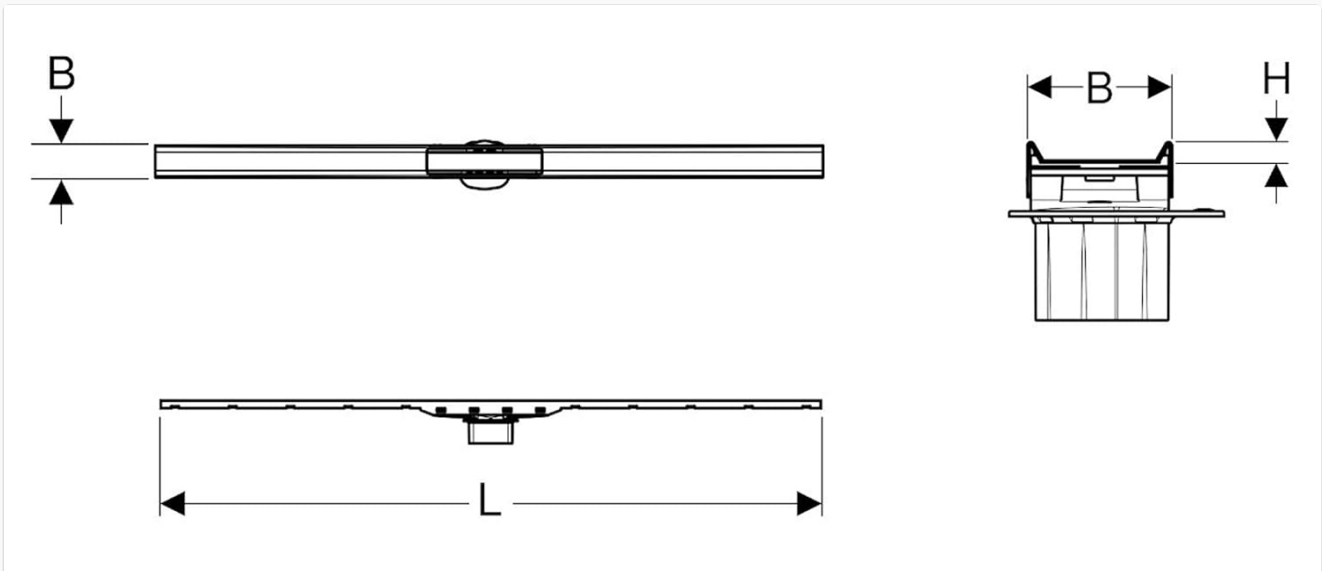


Figure 2: Technical drawing illustrating the dimensions (L, B, H) of the shower channel. L represents length, B represents width, and H represents height.

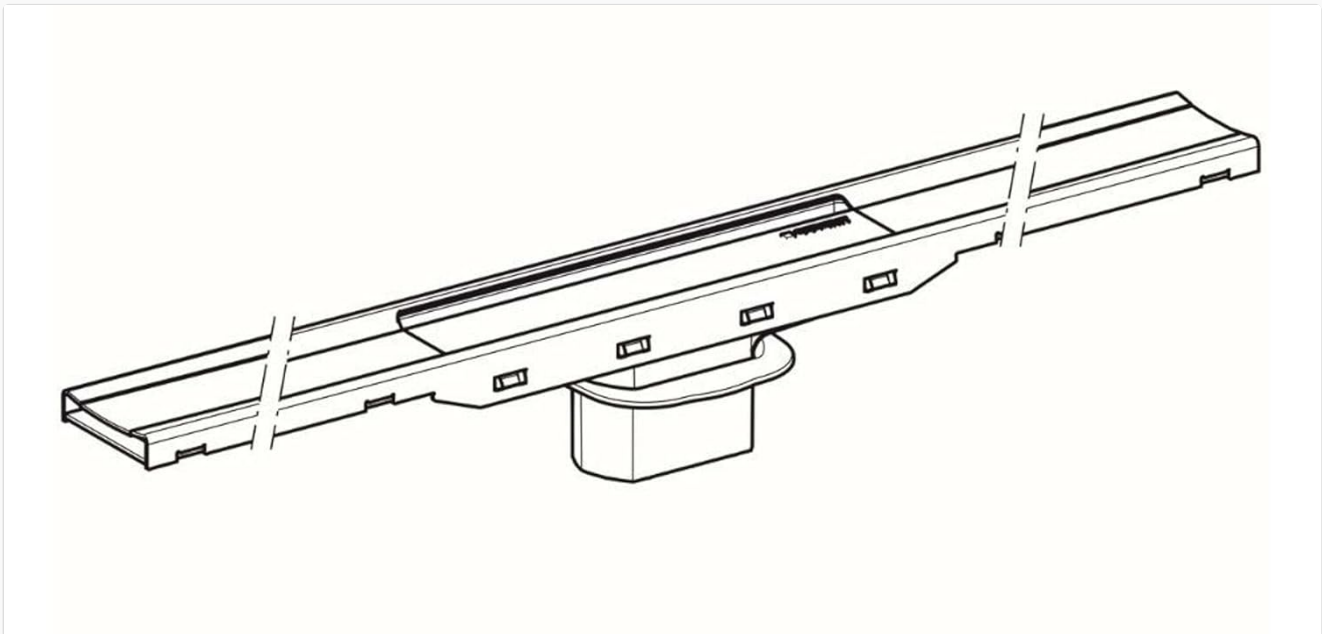


Figure 3: Underside view of the shower channel, detailing the integrated drainage components and support structure.

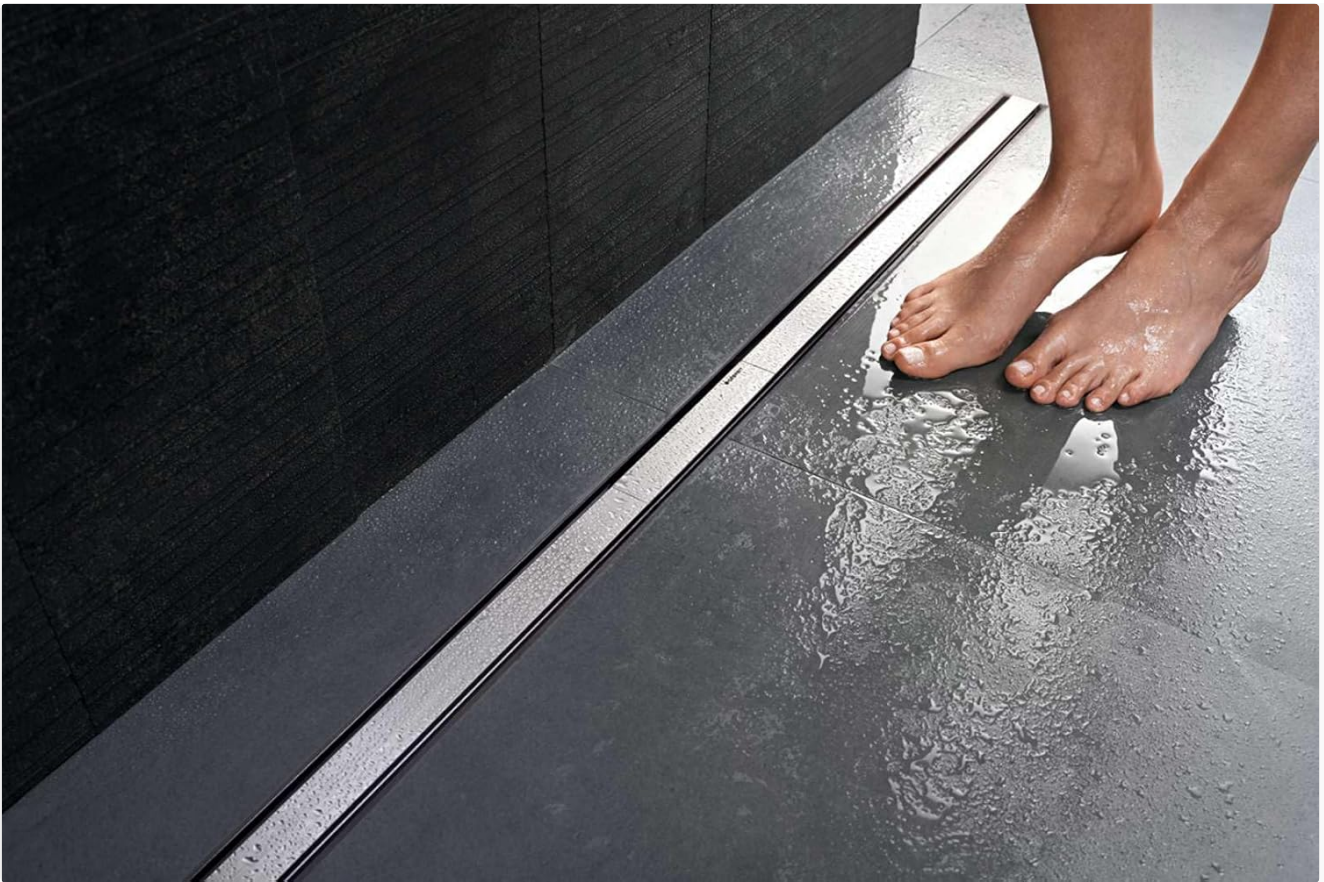


Figure 4: An example of the Geberit CleanLine80 Shower Channel installed seamlessly into a tiled shower floor, demonstrating its flush integration.

4. OPERATION

The Geberit CleanLine80 Shower Channel operates by efficiently collecting and draining water from the shower area. Water is directed into the channel and then evacuated through the integrated drainage system. The design ensures water drainage occurs both above the composite sealing layer and, when the sealing collar is properly installed, above the finished floor level.

5. MAINTENANCE

Regular cleaning is essential to maintain the optimal performance and hygiene of your Geberit CleanLine80 Shower Channel. The channel is designed for easy maintenance.

5.1 Cleaning Procedure

1. Use the provided suction cup to carefully lift the cover of the shower channel.
2. Remove the comb insert from the channel.
3. Clean the comb insert and the inside of the channel thoroughly to remove hair, soap residue, and other debris. Use mild cleaning agents and a soft brush if necessary.
4. Rinse all components with clean water.
5. Reinsert the clean comb insert into the channel.
6. Replace the channel cover, ensuring it sits securely.

Do not use abrasive cleaners or harsh chemicals, as these can damage the surface finish of the shower channel.



Figure 5: Illustration of the cleaning process, showing how to remove and clean the comb insert from the shower channel.

6. TROUBLESHOOTING

No specific troubleshooting information is provided in this manual. For issues related to installation, drainage, or product function, please consult a qualified professional or contact Geberit customer support directly.

7. SPECIFICATIONS





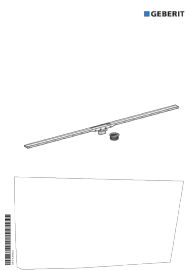

| Specification | Detail |
|--|--|
| Model Number | 154.440.QC.1 |
| Brand | Geberit |
| Material | Stainless Steel |
| Channel Dimensions (Width x Height x Length) | 4.4 cm (W) x 1.0 cm (H) x 30-90 cm (Adjustable Length) |
| Overall Product Dimensions (Packaging) | 93 x 93 x 6.8 cm |
| Weight | 1.15 kg |
| Tile Thickness Compatibility | 10 - 35 mm |
| Standard Compliance | EN 1253-3 |

8. WARRANTY AND SUPPORT

Warranty information for the Geberit CleanLine80 Shower Channel is not provided within this manual. Please refer to your original purchase documentation, the Geberit official website, or contact Geberit customer service directly for detailed warranty terms and support options.

For technical assistance or inquiries, please visit the official Geberit website or contact their authorized service partners.



| | |
|---|--|
|  <p>INSTALLATION MANUAL</p> | <p>Geberit CleanLine80 Shower Channel Installation Manual</p> <p>Comprehensive installation manual for the Geberit CleanLine80 shower channel, providing step-by-step instructions for various installation scenarios.</p> |
|  <p>MAINTENANCE MANUAL</p> | <p>Geberit CleanLine Shower Drain Maintenance Manual</p> <p>A comprehensive maintenance manual for Geberit CleanLine shower drains, providing step-by-step instructions for cleaning and upkeep.</p> |
|  <p>USER MANUAL</p> | <p>Geberit AquaClean Tuma Classic User Manual</p> <p>Comprehensive user manual for the Geberit AquaClean Tuma Classic shower toilet, detailing features, operation, cleaning, maintenance, and troubleshooting for optimal use and care.</p> |
|  <p>GEBERIT SANITARY SYSTEMS CATALOGUE 2018/2019</p> | <p>Geberit Sanitary Systems Catalogue 2018/2019 Plumbing Solutions</p> <p>Explore the Geberit Sanitary Systems Catalogue 2018/2019, featuring concealed cisterns, installation elements like Kombifix and Duofix, flush controls, drainage systems, and AquaClean shower toilets. Find technical details for plumbing professionals.</p> |
|  | <p>Geberit CleanLine Shower Drain Installation Guide</p> <p>Comprehensive installation instructions for Geberit CleanLine shower drains, including models 154.440.KS.1 and 154.441.KS.1. This guide provides step-by-step visual and textual instructions for proper installation.</p> |
|  <p>USER MANUAL</p> | <p>Geberit AquaClean Tuma Classic User Manual</p> <p>Comprehensive user manual for the Geberit AquaClean Tuma Classic shower toilet, detailing operation, maintenance, safety, and troubleshooting.</p> |