

Manuals+

[Q & A](#) | [Deep Search](#) | [Upload](#)

Manuals.plus /

› [Marble Genius](#) /

› Marble Genius Glow in The Dark Marbles for Marble Run - 50 Pieces Instruction Manual

Marble Genius GLOW_MARBLES

Marble Genius Glow in The Dark Marbles (50 Pieces) Instruction Manual

Model: GLOW_MARBLES

1. PRODUCT OVERVIEW

The Marble Genius Glow in The Dark Marbles set includes 50 pieces designed to enhance marble run play. This set features three types of marbles:

- **LED-activated plastic marbles:** These marbles glow when activated by an LED light source.
- **LED-activated glass marbles:** Similar to the plastic marbles, these glass marbles also glow when exposed to an LED light.
- **Motion-activated flashing marbles:** These marbles contain internal LEDs that flash brightly when they are in motion.

These marbles are compatible with all Marble Genius accessories and sets, offering expanded possibilities for creative marble run designs.

From the Playtime Experts at



GLOWING MARBLES

50 Pieces



© Marble Genius 2023

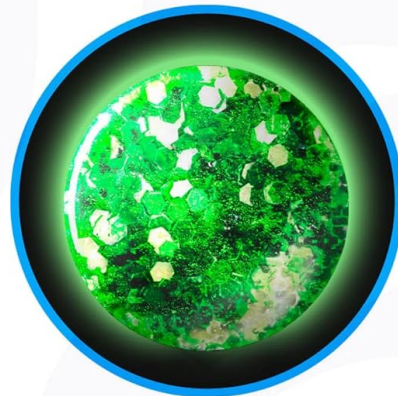
Image 1.1: The Marble Genius Glow in The Dark Marbles set, showing the product packaging and a variety of marbles.

3 KINDS OF GLOW

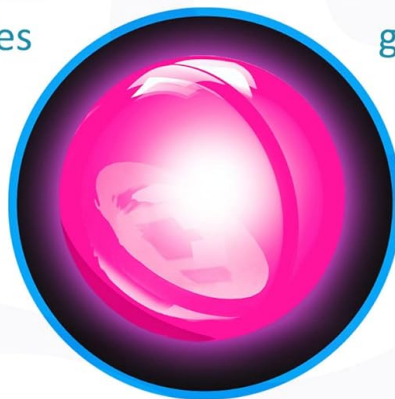
This set includes:



26 LED-activated
plastic marbles



12 LED-activated
glass marbles



12 motion-activated
flashing marbles

© Marble Genius 2023

Image 1.2: A visual representation of the three distinct types of glow marbles included in the set.

2. SETUP AND ACTIVATION

2.1 Activating Glow Marbles

To activate the glow feature of the LED-activated plastic and glass marbles, expose them to a light source. For optimal glow, use the included UV light or a similar LED light source to 'charge' the marbles. The marbles will absorb the light and then emit a glow in low-light conditions.

2.2 Motion-Activated Flashing Marbles

The motion-activated flashing marbles are designed to light up automatically when they are moved. No external charging is required for their flashing function. These marbles contain internal batteries (1 CR2 battery included per marble) that power their LED lights.

Video 2.1: Demonstration of glow in the dark marbles activating and glowing in low light conditions.

Video 2.2: A close-up view of bright LED marbles in action, showcasing their illumination.

3. OPERATING INSTRUCTIONS

These marbles are designed for use with Marble Genius marble run sets. Place the marbles at the starting point of your marble run and observe as they travel through the tracks, towers, and other components. The motion-activated marbles will flash as they move, and the LED-activated marbles will glow if they have been sufficiently charged and are in a low-light environment.

MARBLE FUN IS FOR EVERYONE

Building pieces snap together in seconds

Rebuild the run as often as you like

Unlimited engineering challenges

Marble run building sets sold separately



Image 3.1: A child interacting with a Marble Genius marble run, demonstrating typical play.

Video 3.1: An overview of a Marble Genius Marble Run in operation, showcasing the marbles moving through the tracks.

4. MAINTENANCE

4.1 Cleaning

To clean the marbles, wipe them with a soft, damp cloth. Avoid using harsh chemicals or abrasive

materials, as these may damage the marble surface or the internal LED components.

4.2 Battery Replacement (Motion-Activated Marbles)

The motion-activated flashing marbles are powered by CR2 batteries. If a motion-activated marble stops flashing, the battery may need replacement. Due to the sealed design for durability, battery replacement is not typically user-serviceable and may require specialized tools or expertise. Attempting to open the marbles may damage them.

5. TROUBLESHOOTING

5.1 LED-Activated Marbles Not Glowing

- Ensure the marbles have been sufficiently charged by exposing them to a bright light source, such as the included UV light, for an adequate period.
- Confirm that the play environment is dark enough for the glow effect to be visible.

5.2 Motion-Activated Marbles Not Flashing

- Verify that the marbles are experiencing sufficient motion to trigger the internal sensor.
- If the marble still does not flash, the internal battery may be depleted or the LED component may be faulty. As battery replacement is not user-serviceable, contact customer support if issues persist.

Video 5.1: A user demonstrating light-up marbles, noting that some may not function as expected.

Video 5.2: A brief clip showing light-up marbles, with a user expressing dissatisfaction regarding their functionality.

6. SPECIFICATIONS

Product Name	Glow in The Dark Marbles for Marble Run
Brand	Marble Genius
Model Number	GLOW_MARBLES
ASIN	B08D3BCB48
Quantity	50 Pieces
Package Dimensions	5.04 x 3.82 x 2.05 inches
Item Weight	0.352 ounces
Recommended Age	4 years and up
Batteries (Motion-Activated)	1 CR2 battery required (included)

For further assistance or inquiries, please visit the official Marble Genius website or contact customer support.