

Divoom 6958444603148

Divoom Pixoo-Max Pixel Display User Manual

Model: 6958444603148

1. INTRODUCTION

The Divoom Pixoo-Max is an advanced 32x32 pixel LED display board designed for home decoration, business advertisement, and creative expression. It features a 9.6-inch screen and offers extensive customization options through its dedicated mobile application. This manual provides detailed instructions for setting up, operating, maintaining, and troubleshooting your Pixoo-Max device.



Image: The Divoom Pixoo-Max Pixel Display, showcasing a vibrant pixel art smiley face, attached to its suction cup stand.

2. PACKAGE CONTENTS

Please verify that all items are present in your Pixoo-Max package:

- Divoom Pixoo-Max Pixel Display
- USB-C Charging Cable
- Adjustable Stand with Suction Cup
- User Manual (this document)

3. SETUP

3.1 Initial Power-On

1. Connect the Pixoo-Max to a power source using the provided USB-C cable.
2. The device will automatically power on and display a default animation.

3.2 App Download and Connection

The Divoom app is essential for full functionality and customization of your Pixoo-Max.

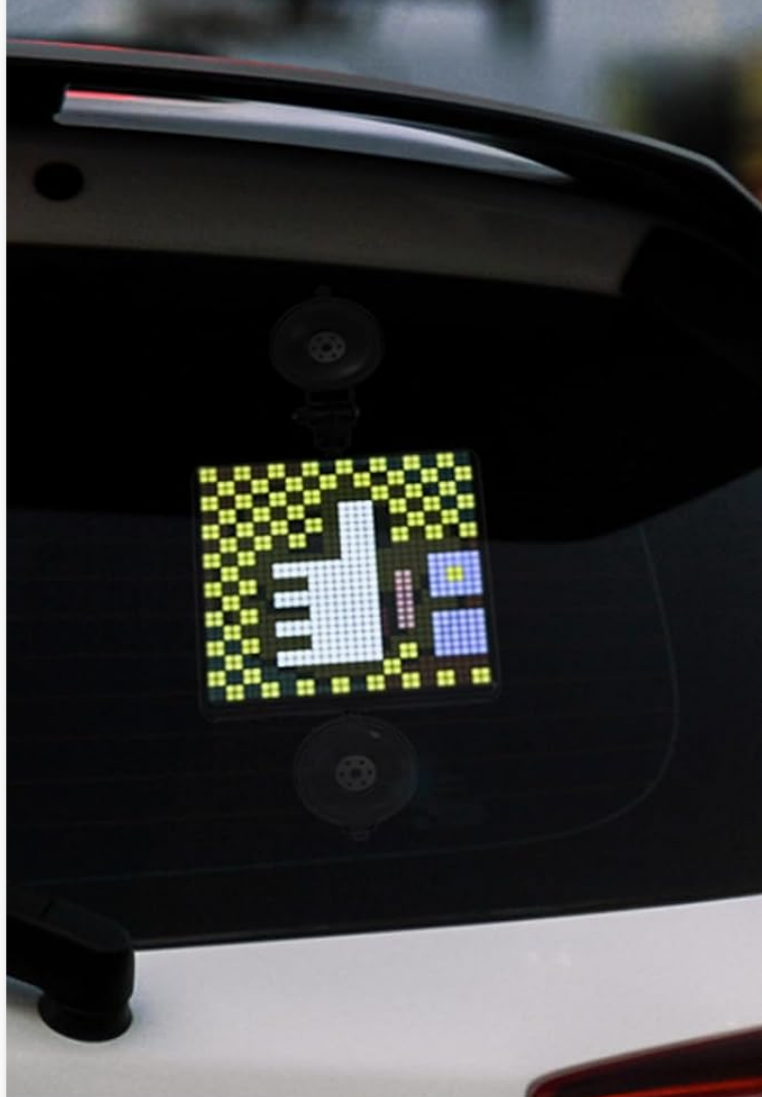
1. Download the **Divoom app** from your smartphone's app store (available on iOS and Android).
2. Open the Divoom app and enable Bluetooth on your smartphone.
3. Follow the in-app instructions to pair your Pixoo-Max device. Ensure the device is powered on and within Bluetooth range.

3.3 Physical Placement

The Pixoo-Max offers versatile placement options:

- **Desktop/Shelf:** Attach the included stand to the back of the device and place it on any flat surface.
- **Wall Mounting:** Utilize the hanging slot on the back of the device to mount it on a wall using a suitable hook or screw (not included).
- **Vehicle Use:** The suction cup stand allows for mounting on a car window, enabling features like voice-controlled display for drivers.

Thumb Up for Driver



\$100,000 with over 2,000 Backers! Funded with



KICKSTARTER

Image: The Divoom Pixoo-Max installed on a car's rear window, demonstrating its use as a vehicle display.

4. OPERATING INSTRUCTIONS

The Divoom app is your primary interface for controlling and customizing the Pixoo-Max.

4.1 Pixel Art Creation and Display

The app allows you to design and display various forms of pixel art:

- **Create Your Own:** Use the built-in pixel editor to draw static images, animations (up to 100 frames), or scrolling text messages.
- **Community Library:** Access a vast online library of user-generated pixel art, animations, and designs. You can download and display these directly on your Pixoo-Max.
- **GIF Import:** Import GIF files to convert them into pixel creations, though results may vary.

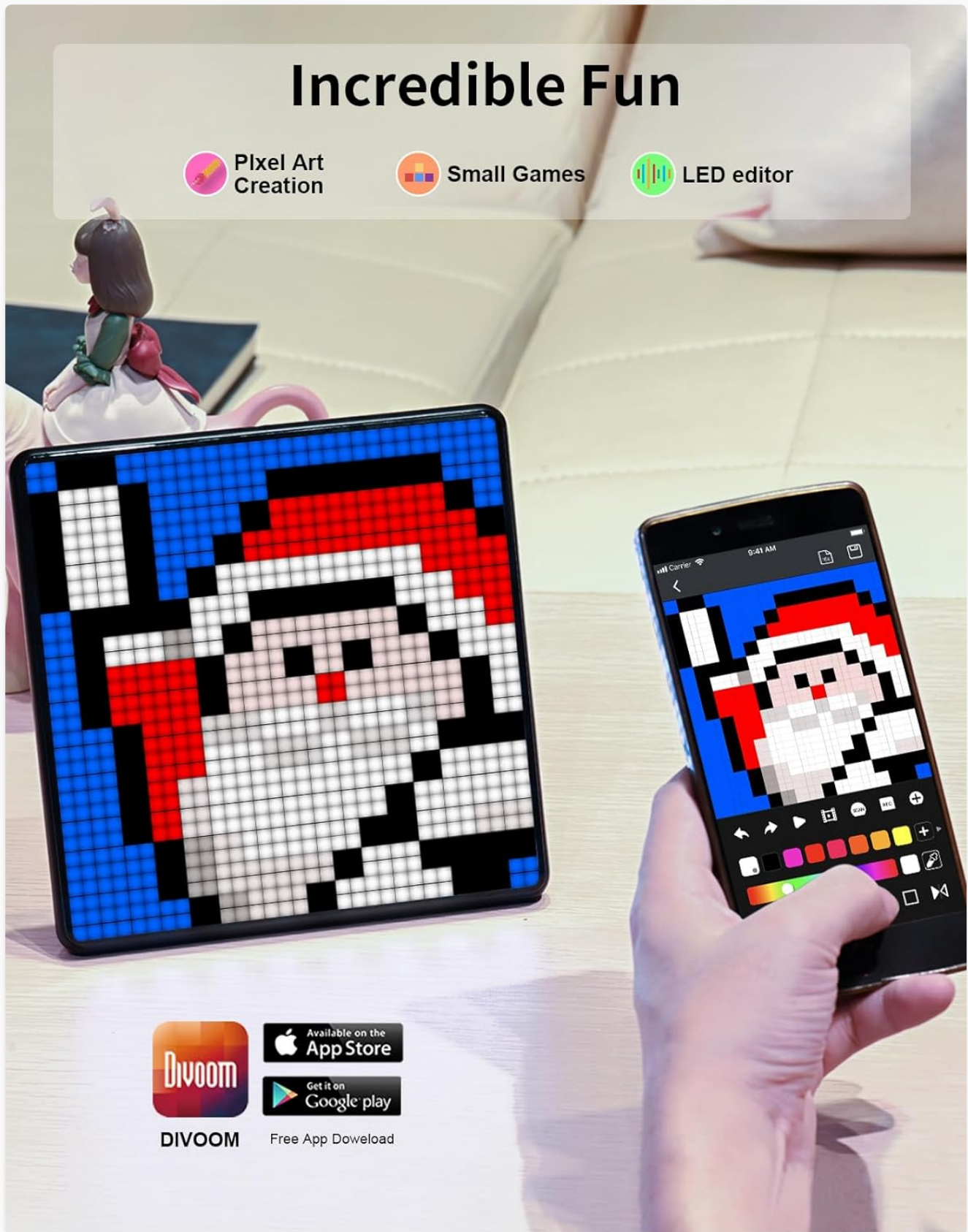


Image: A Divoom Pixoo-Max alongside a smartphone, illustrating the pixel art creation process within the Divoom app.

4.2 Smart Functions

Beyond pixel art, the Pixoo-Max offers several smart functions:

- **Clock Faces:** Choose from a variety of digital and analog clock faces, some of which can display time, date, temperature, and weather. Note that color customization may be limited for certain clock faces.
- **Notifications:** Display notifications from linked social media accounts or other apps.
- **Weather Reports:** Get real-time weather updates displayed on the screen.
- **Games:** Play simple pixel games directly on the device.
- **Music Visualizer:** The display can react to ambient sound, creating dynamic light patterns that visualize music.
- **Voice Control:** Use voice commands to change displayed images or access certain functions, particularly useful when mounted in a vehicle.

Helpful Home Gadget



Planner



Notification



Nightlight



Weather



Stopwatch



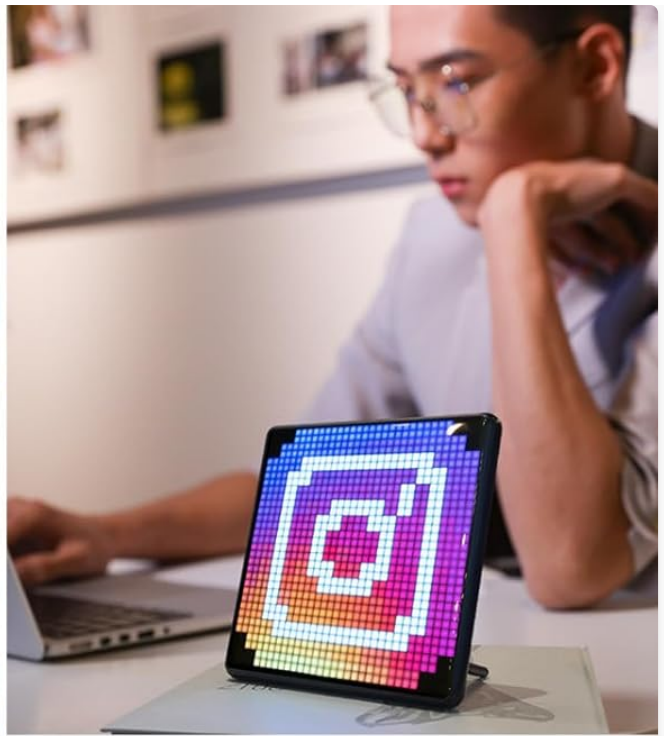
Games



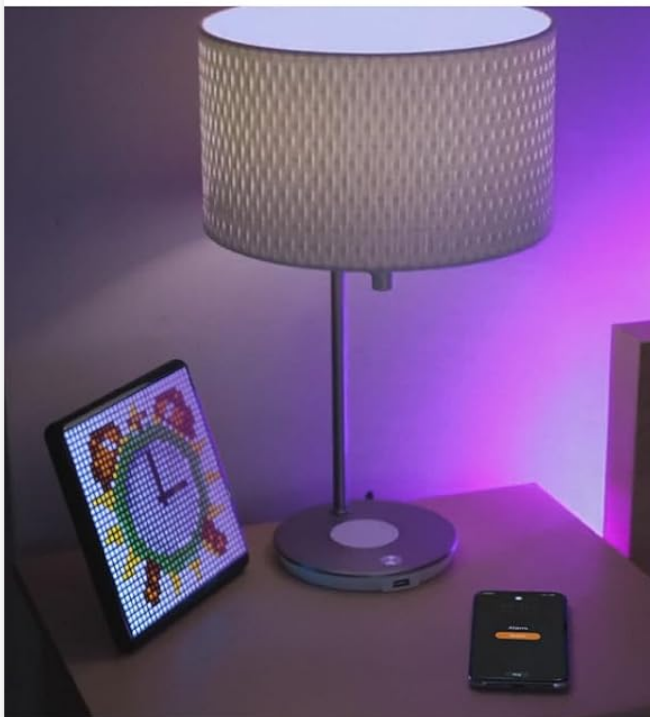
Image: The Divoom Pixoo-Max on a desk, highlighting its diverse functionalities such as planner, notifications, nightlight, weather, stopwatch, and games.



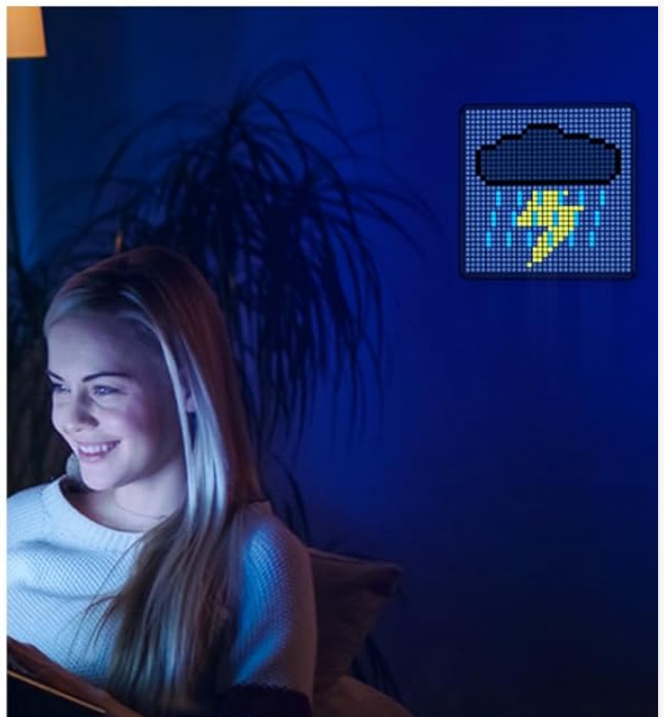
Store Signboard



SNS Notification



Bedside Alarm



Weather Report

Image: A collage demonstrating various practical applications of the Divoom Pixoo-Max, including a store signboard, SNS notification display, bedside alarm, and weather report.

5. FEATURES OVERVIEW

The Divoom Pixoo-Max is designed with several key features to enhance user experience:

- **High-Resolution Display:** Equipped with a 32x32 pixel LED screen, providing a clear and vibrant display for detailed pixel art.

- **Advanced Voice Control:** Allows for hands-free operation, enabling users to change displays with simple voice commands.
- **Extensive Customization:** Offers the ability to create personal pixel art, animations, and scrolling text messages through the intuitive Divoom app.
- **Community-Driven Content:** Access to a vast online community and library of shared pixel designs, constantly expanding your display options.
- **Versatile Placement:** Comes with a stand for desktop use and a hanging slot for wall mounting, adapting to various environments.
- **Dynamic Lighting:** Reacts to ambient sound and music, transforming into an immersive lighting experience.
- **USB-C Connectivity:** Features a modern USB-C port for convenient charging and data transfer.

32x32 LED matrix size

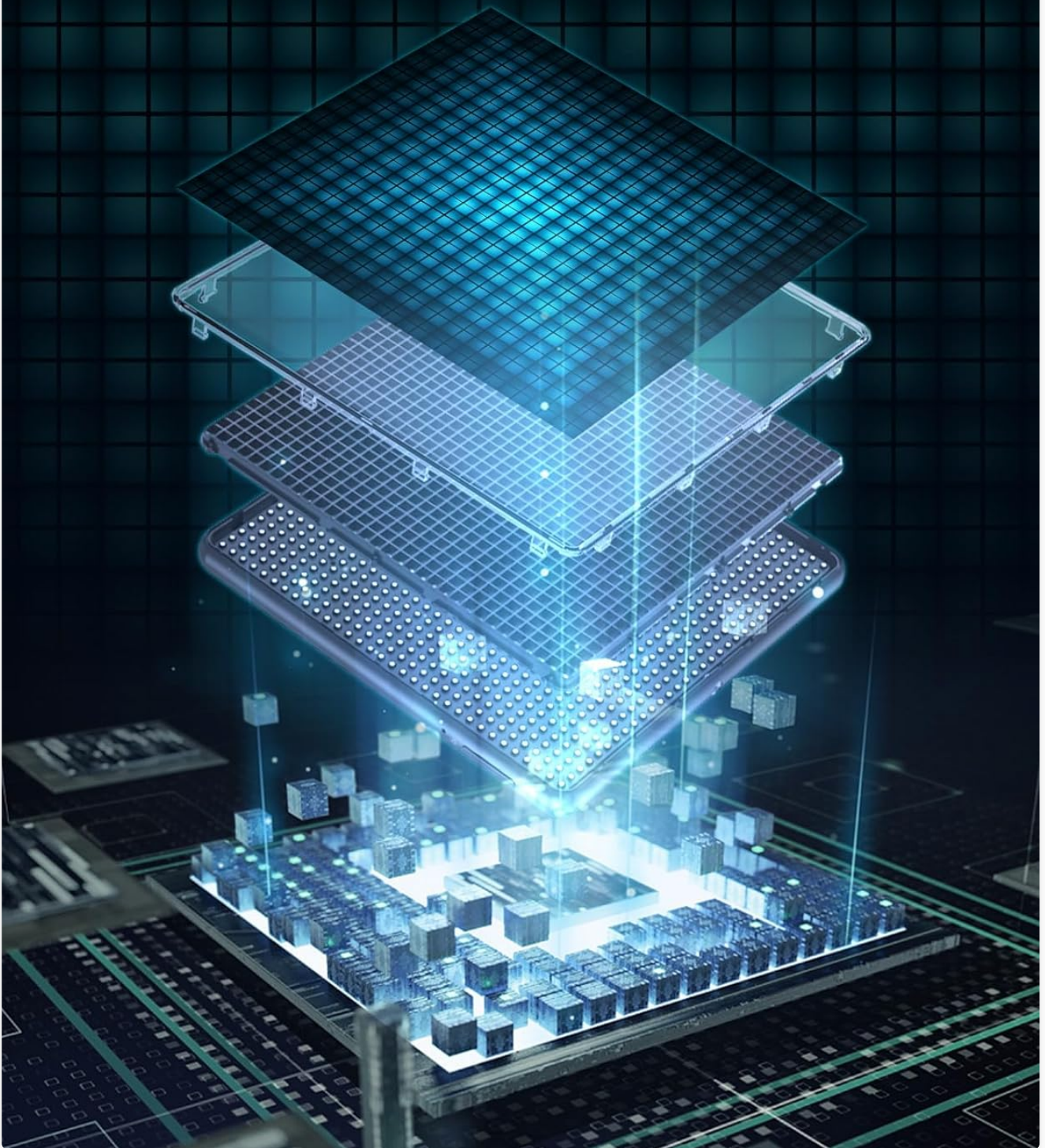


Image: An illustrative diagram detailing the internal layers and 32x32 LED matrix structure of the Divoom Pixoo-Max.

Dance with Music & Audio



Image: Two Divoom Pixoo-Max units on a desk, actively displaying dynamic music visualization patterns in sync with audio.

6. MAINTENANCE

To ensure the longevity and optimal performance of your Divoom Pixoo-Max, follow these simple maintenance guidelines:

- **Cleaning:** Gently wipe the screen and body with a soft, dry, lint-free cloth. Avoid using abrasive cleaners, solvents, or spray directly onto the device.

- **Power:** Always use the provided USB-C cable for charging. While the device includes an AAA battery, it is primarily powered via USB-C for continuous operation.
- **Environment:** Keep the device away from extreme temperatures, direct sunlight, and high humidity. Do not expose it to water or other liquids.
- **Storage:** If storing the device for an extended period, ensure it is fully charged and stored in a cool, dry place.

7. TROUBLESHOOTING

If you encounter issues with your Divoom Pixoo-Max, refer to the following common problems and solutions:

Problem	Possible Cause	Solution
Device does not power on.	No power, faulty cable, or drained battery.	Ensure USB-C cable is securely connected to a working power source. Try a different cable or power adapter.
Cannot connect to Divoom app.	Bluetooth off, device not in pairing mode, or app issue.	Ensure Bluetooth is enabled on your phone. Restart both the Pixoo-Max and the Divoom app. Try re-pairing the device in the app.
Display is dim or too bright.	Brightness setting issue or automatic adjustment.	Adjust brightness settings within the Divoom app. Note that some users report the brightness occasionally resetting to full; check for app updates or contact support if persistent.
Animations are choppy or slow.	Network issue during download or app performance.	Ensure a stable internet connection when downloading new animations. Close and reopen the Divoom app.

If the problem persists after trying these solutions, please refer to the Warranty and Support section for further assistance.

8. SPECIFICATIONS

Feature	Detail
Product Dimensions	32 x 32 x 0.99 inches
Item Weight	2.5 pounds
Model Number	6958444603148
Batteries	1 AAA battery required (included)
Resolution	XGA (32x32 pixels)
Compatible Devices	Smartphone
Screen Size	9.6 inches (diagonal)
Color	Black

Feature	Detail
Manufacturer	Divoom
Date First Available	July 16, 2020

9. WARRANTY AND SUPPORT




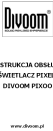
Divoom products are manufactured with high-quality standards. For warranty information and support, please refer to the official Divoom website or contact Divoom customer service.



- **Official User Manual (PDF):** [Download PDF](#)
- **Divoom Brand Store:** [Visit Divoom Store on Amazon](#)

Please retain your proof of purchase for any warranty claims.

© 2024 Divoom. All rights reserved.

Related Documents - 6958444603148

	<p>Divoom Pixoo-Max: Indoor & In-Car Pixel Art Display User Manual and Specifications</p> <p>Comprehensive guide to the Divoom Pixoo-Max, a 32x32 pixel art display for indoor and in-car use. Learn about product features, Bluetooth connectivity, voice control, car mode, charging, specifications, warranty, and FCC compliance.</p>
	<p>Divoom Pixoo Max Panel LED Pixel Art - Instrukcja Obsługi i Specyfikacja</p> <p>Obszerna instrukcja obsługi dla Divoom Pixoo Max, wielofunkcyjnego panelu LED pixel art. Dowiedz się o konfiguracji, funkcjach, łączności Bluetooth, trybie samochodowym, gwarancji i specyfikacji.</p>
	<p>Divoom Pixoo Backpack-S: User Manual, Specifications, and EU Declaration of Conformity</p> <p>Comprehensive guide for the Divoom Pixoo Backpack-S, detailing setup, care, safety precautions, technical specifications, warranty information, and EU conformity. Features include a programmable pixel display.</p>
	<p>Divoom Pixoo - Instrukcja Obsługi Wyświetlacza Pixel Art</p> <p>Kompletna instrukcja obsługi dla Divoom Pixoo, osobistego asystenta pixel art. Zawiera informacje o funkcjach, połączeniu Bluetooth, ładowaniu, specyfikacjach technicznych oraz deklarację zgodności UE.</p>

 <p>INSTRUKCJA OBSŁUGI Torba z wyświetlaczem pikselowym PIXOO SLINGBAG-V</p> <p>divoom</p> <p>V1.0</p>	<p>Instrukcja Obsługi Torby Divoom PIXOO SLINGBAG-V z Wyświetlaczem Pikselowym</p> <p>Kompleksowa instrukcja obsługi dla torby Divoom PIXOO SLINGBAG-V, zawierająca informacje o konfiguracji, pielęgnacji, specyfikacjach technicznych, gwarancji oraz deklaracji zgodności UE. Dowiedz się, jak korzystać z unikalnego wyświetlacza pikselowego.</p>
 <p>PIXOO 64 64x64 SMART DISPLAY</p> <p>divoom</p>	<p>Divoom Pixoo 64 Smart Display User Manual and Product Information</p> <p>Comprehensive guide to the Divoom Pixoo 64, a 64x64 pixel art LED smart display. Learn about setup, features, specifications, troubleshooting, and warranty.</p>