

Walker 84361

Walker CalCat 84361 Catalytic Converter Instruction Manual

For 2010-2012 Mazda 3 Vehicles

1. PRODUCT OVERVIEW

The Walker CalCat 84361 catalytic converter is designed for automotive applications requiring compliance with CARB standards. This unit is EPA compliant for OBDII vehicles, ensuring adherence to emissions regulations. It features a direct-fit design for straightforward installation and is constructed from robust stainless steel for durability.

Included in the Box:

- Catalytic Converter with Integrated Exhaust Manifold



Image 1.1: The Walker CalCat 84361 Catalytic Converter, showing the integrated manifold and exhaust pipe.

2. KEY FEATURES

- **Direct-Fit Design:** Engineered for bolt-off, bolt-on installation, this OE-style converter includes

integrated manifold assemblies that connect directly to the engine cylinder head and match all downstream connections. No cutting or welding is required.

- **Optimal Washcoat Technology:** Features a high-technology washcoat formulated for superior performance in emissions conversion.
- **Consistent Performance:** Utilizes a precise OE-style coating process to apply catalyst material to the substrate, ensuring consistent performance and emissions compliance.
- **Durability:** Constructed with thick OE-style flanges, hangers, and brackets for strength, and a stainless-steel body with aluminized pipe and heat shields for long-lasting operation.
- **CARB Compliant:** Meets stringent California Air Resources Board (CARB) standards, making it legal for sale in California, Colorado, New York, and other states requiring CARB-compliant replacement converters.

NO BREAK-IN REQUIRED

Ready to operate with application-specific
converter shell design and mat compression

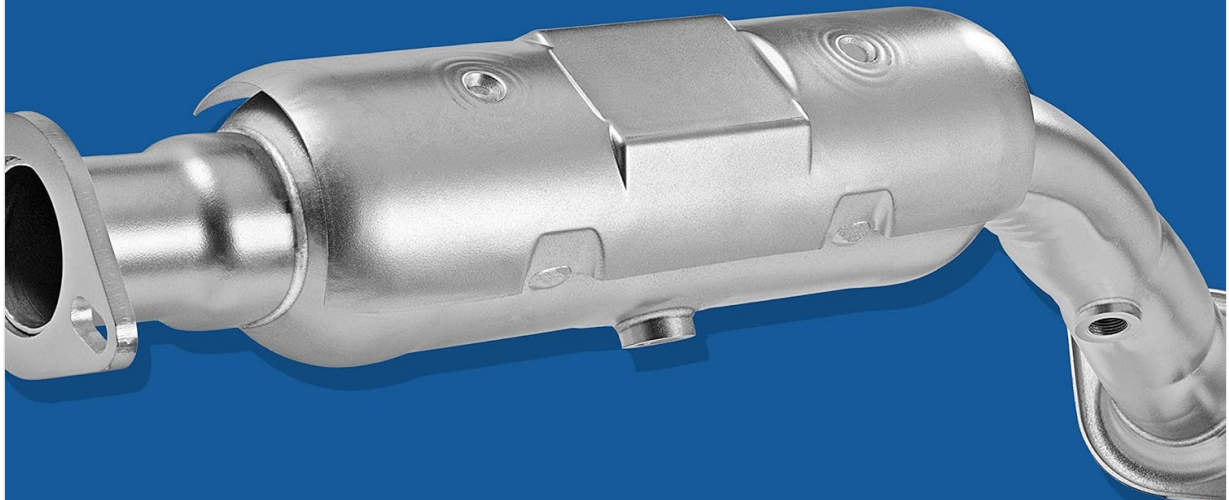


Image 2.1: Illustration indicating that no break-in period is required for the converter, ready for immediate operation.



Designed for use on OBDII vehicles, 1996 and newer and non-OBD 1995 and older. Legal for sale in California, Colorado, New York & other states requiring CARB-compliant replacement converters.

Image 2.2: Official CARB Compliant logo, indicating the converter meets California Air Resources Board standards.

3. INSTALLATION INSTRUCTIONS

Installation of the Walker CalCat 84361 catalytic converter should be performed by a qualified automotive professional. Proper installation is crucial for optimal performance and emissions compliance.

3.1 Pre-Installation Checks

1. Verify that the vehicle's engine is off and cooled down to prevent burns.
2. Ensure the correct part number (84361) matches your vehicle's make, model, and year (2010-2012 Mazda 3).
3. Inspect the new converter for any shipping damage.
4. Gather all necessary tools, including wrenches, sockets, and safety equipment.

3.2 Removal of Old Converter

1. Safely lift and secure the vehicle on a hoist or jack stands.
2. Locate the existing catalytic converter and its mounting points.
3. Disconnect any oxygen sensors from the old converter.
4. Unbolt the old converter from the exhaust manifold and downstream exhaust pipe.
5. Carefully remove the old converter.



Image 3.1: A mechanic performing installation of an exhaust component under a vehicle, demonstrating the process.

3.3 Installation of New Converter

1. Position the new Walker CalCat 84361 converter, aligning its flanges with the exhaust manifold and downstream pipe.
2. Securely bolt the converter into place, ensuring all connections are tight.
3. Reinstall any oxygen sensors, ensuring they are properly torqued.
4. Check for proper clearance and alignment with other vehicle components.



Image 3.2: Close-up view of robust exhaust flanges, highlighting the direct-fit design for secure connections.

4. OPERATING PRINCIPLES

The catalytic converter is a critical component of your vehicle's exhaust system, designed to reduce harmful emissions. It converts toxic pollutants in exhaust gas into less toxic pollutants by catalyzing redox reactions.

4.1 Emissions Control

The Walker CalCat 84361 utilizes advanced washcoat technology and precious metal loads to efficiently convert carbon monoxide, unburnt hydrocarbons, and nitrogen oxides into carbon dioxide, water vapor, and nitrogen gas. This process ensures your vehicle meets EPA and CARB emissions standards.



Image 4.1: A cutaway view of a catalytic converter, illustrating the internal substrate and washcoat layers responsible for

5. MAINTENANCE

Catalytic converters generally require minimal direct maintenance. However, their longevity and effectiveness are heavily dependent on the overall health of your vehicle's engine and exhaust system.

- **Regular Engine Maintenance:** Ensure your vehicle receives regular oil changes, spark plug replacements, and air filter checks as recommended by the vehicle manufacturer. A well-tuned engine prevents excessive unburnt fuel from reaching the converter, which can cause overheating and damage.
- **Address Engine Malfunctions Promptly:** Any issues causing the 'Check Engine Light' to illuminate should be diagnosed and repaired immediately. Malfunctions like misfires or rich fuel mixtures can severely damage the catalytic converter.
- **Fuel Quality:** Use the recommended fuel type and avoid leaded gasoline, as lead can contaminate the catalyst and render it ineffective.

6. TROUBLESHOOTING

If you experience issues after installing or while using your catalytic converter, consider the following common problems and solutions.

6.1 Check Engine Light Illumination

The Walker CalCat 84361 is designed to prevent the 'Check Engine Light' from illuminating due to emissions codes. If the light comes on, it indicates an issue that needs attention.

- **Diagnosis:** Use an OBDII scanner to retrieve diagnostic trouble codes (DTCs).
- **Common Causes:** Issues unrelated to the converter itself, such as faulty oxygen sensors, engine misfires, vacuum leaks, or fuel system problems, can trigger the light.
- **Solution:** Address the underlying engine or sensor issue. Consult a professional mechanic for accurate diagnosis and repair.

KEEPS THE CHECK ENGINE LIGHT OFF

Optimal washcoat technology keeps
the check engine light off for emissions codes

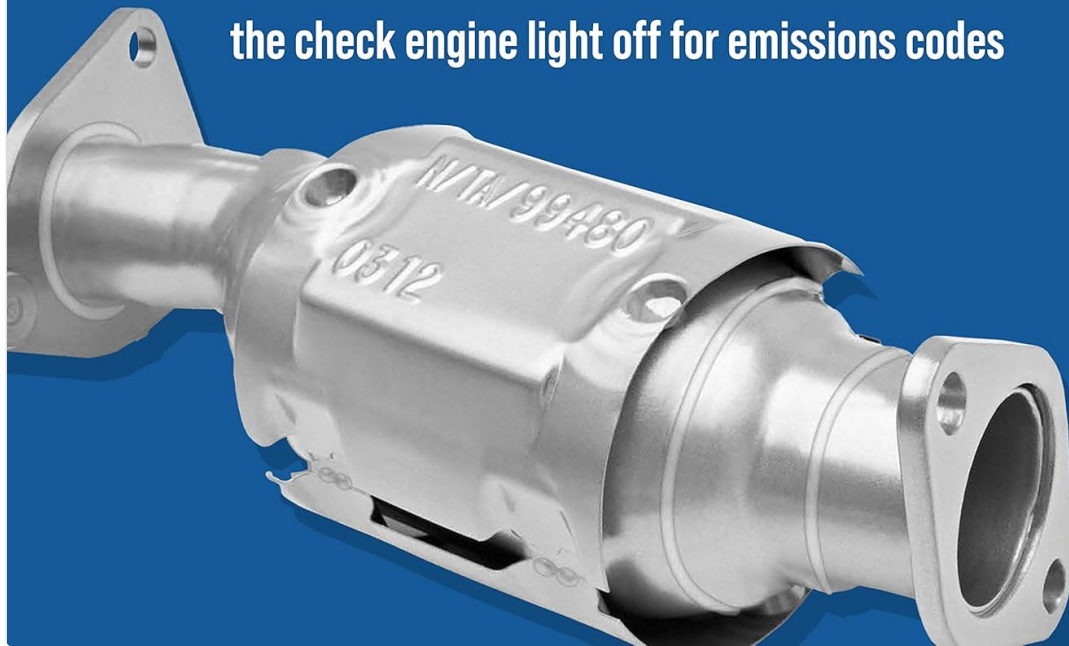


Image 6.1: Illustration emphasizing the converter's role in keeping the check engine light off for emissions-related codes.

6.2 Reduced Engine Performance

A clogged or damaged catalytic converter can restrict exhaust flow, leading to reduced engine power, poor acceleration, and decreased fuel efficiency.

- **Diagnosis:** A mechanic can perform an exhaust backpressure test to determine if the converter is restricted.
- **Solution:** If the converter is confirmed to be clogged, replacement is necessary. Ensure the root cause of the clogging (e.g., engine running rich) is also addressed to prevent recurrence.

7. SPECIFICATIONS

| Specification | Detail |
|---------------|----------------|
| Brand | Walker |
| Model Number | 84361 |
| Manufacturer | Walker Exhaust |

| | |
|----------------------|--|
| Item Weight | 9 pounds |
| Package Dimensions | 36 x 16 x 14 inches |
| Exterior Finish | Machined |
| Emissions Compliance | CARB Certified, EPA Compliant (for OBDII vehicles) |



Image 7.1: Logos indicating EPA and CARB compliance for Walker converters.

| | CALCAT® DIRECT-FIT CONVERTER | CALCAT® UNIVERSAL CONVERTER | ULTRA® DIRECT-FIT CONVERTER | ULTRA® UNIVERSAL CONVERTER |
|--|------------------------------------|-----------------------------------|-----------------------------------|----------------------------------|
| DIRECT-FIT Bolt Off / Bolt On No Fabrication Or Welding Required No Break-In Required | ✓ | | ✓ | |
| UNIVERSAL Customizable installation No break-in required | | ✓ | | ✓ |
| CARB-COMPLIANT Legal for use in California Legal for use in Colorado Legal for use in Maine, vehicles 2001 and newer Legal for use in NY, vehicles 1993, 1994 or 1996 and newer | ✓ | ✓ | | |
| EPA-COMPLIANT Legal for use in all other states Legal for use in Maine, vehicles 2000 and older Legal for use in NY, vehicles 1995, 1992 and older | | | ✓ | ✓ |

Image 7.2: A comparison table detailing features of CalCat Direct-Fit, CalCat Universal, Ultra Direct-Fit, and Ultra Universal converters, including compliance and installation types.

8. WARRANTY AND SUPPORT

8.1 Warranty Information

The Walker CalCat 84361 catalytic converter is backed by Walker's 50,000-mile/80,000-kilometer emissions and structural integrity warranty. This warranty covers defects in materials and workmanship under normal use and service.

For specific warranty terms and conditions, please refer to the official Walker product documentation or contact Walker customer support.

8.2 Customer Support

For technical assistance, installation questions, or warranty claims, please contact Walker customer support through their official website or the contact information provided with your product packaging.

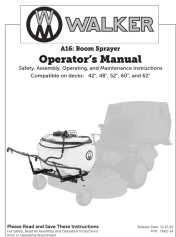

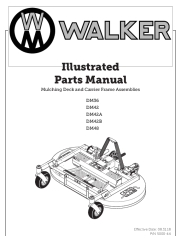
9. PRODUCT VIDEO

Your browser does not support the video tag.

Video 9.1: An informational video about Walker CalCat Catalytic Converters, highlighting their features and compliance standards.

© 2023 Walker Exhaust. All rights reserved.

Related Documents - 84361

| | |
|---|---|
|  | <p>Walker A16 Boom Sprayer Operator's Manual: Safety, Assembly, Operation, Maintenance</p> <p>Comprehensive operator's manual for the Walker A16 Boom Sprayer, covering safety instructions, assembly procedures, operating guidelines, maintenance tips, troubleshooting, and parts lists. Compatible with various Walker mower decks.</p> |
|  | <p>Walker Rider Lawnmower Owner's Manual MS36-42 MC36-54</p> <p>Owner's manual for Walker Rider Lawnmower models MS36-42 (11-HP) and MC36-54 (16-HP), detailing assembly, safety, operation, and maintenance. Includes specifications and troubleshooting.</p> |
|  | <p>Walker C19 Illustrated Parts Manual</p> <p>Detailed illustrated parts manual for the Walker C19 riding mower, providing comprehensive lists and diagrams for all components, including chassis, engine, drive systems, and accessories. Essential for maintenance and repair.</p> |
|  | <p>Walker Illustrated Parts Manual for DM36, DM42, DM42A, DM42B, DM48 Mulching Decks and Carrier Frames</p> <p>This illustrated parts manual provides detailed information for Walker DM36, DM42, DM42A, DM42B, and DM48 mulching decks and carrier frame assemblies. It includes part numbers, descriptions, diagrams, and assembly instructions to help identify and order replacement components for Walker lawn mowers.</p> |



[Walker T23 Illustrated Parts Manual](#)

Comprehensive illustrated parts manual for the Walker T23 commercial rider mower. Includes detailed diagrams, part numbers, and assembly information for maintenance and repair of all major components, including the Rehlko/Kohler engine.



[Walker T27i Illustrated Parts Manual - Parts List and Diagrams](#)

Comprehensive illustrated parts manual for the Walker T27i commercial zero-turn mower. Find part numbers, diagrams, and specifications for maintenance and repair.