

Manuals+

[Q & A](#) | [Deep Search](#) | [Upload](#)

[manuals.plus](#) /

› [OLIGHT](#) /

› [OLIGHT Baldr Mini Weaponlight User Manual](#)

OLIGHT AM-OL-Baldr Mini-US

OLIGHT Baldr Mini User Manual

Model: AM-OL-Baldr Mini-US

Rechargeable Weaponlight with Green Beam and White LED Combo

1. PRODUCT OVERVIEW

The OLIGHT Baldr Mini is a compact and powerful weaponlight designed for enhanced accuracy and versatility. It integrates a highly visible green beam and a 600-lumen white LED light, offering multiple illumination options. Featuring a magnetic USB charging system and an adjustable rail mount, it provides convenient operation and broad compatibility with various firearms.



Image: The OLIGHT Baldr Mini, showcasing its compact design and green laser beam.

BALDR MINI

LIGHTWEIGHT AND COMPACT LIGHT



MAX OUTPUT



600lm

MAX RUNTIME



40min

MAX THROW



130m

WEIGHT



87g/3.07oz
(Including Battery)

Image: Overview of Baldr Mini's compact size, max output (600lm), max runtime (40min), max throw (130m), and weight (87g/3.07oz).

2. PACKAGE CONTENTS

- Baldr Mini (Battery built-in) x 1
- Picatinny Rail Mount Adapter x 1
- Oval Point Set Screw x 1
- Cone Point Set Screw x 1
- Magnetic Charging Cable (MCC Special Edition) x 1
- H1.5 Allen Wrench x 1



Image: Contents of the Baldr Mini package, including the light, charging cable, and mounting accessories.

3. SETUP AND INSTALLATION

3.1 Rail Compatibility and Adjustment

The Baldr Mini is designed for adaptability to both GL and Picatinny rails. Its adjustable rail mount allows for easy forward and backward positioning to fit various mounting styles, ensuring optimal compatibility.

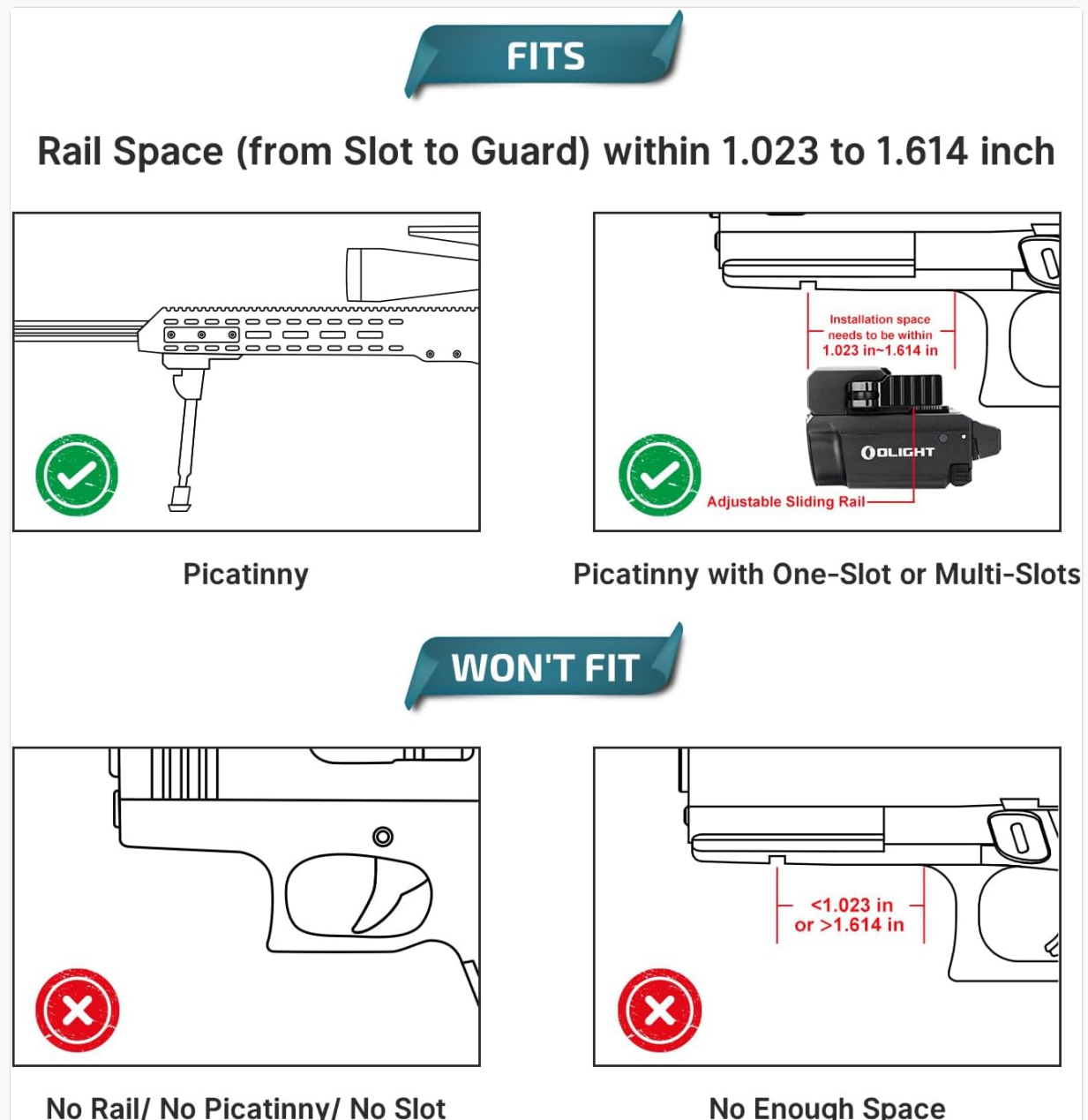


Image: Diagram illustrating compatible rail spaces (1.023 to 1.614 inches) for Picatinny rails and examples of incompatible setups (no rail or insufficient space).

COMPATIBLE BUILDS

KEL-TEC	PF-9
FN	509 / FNS / FNX / FIVE-SEVEN
TAURUS	TX22 / TH9C / TH9 / G2S / G2C / 92
RUGER	SECURITY 9 / AMERICAN SERIES / SR22
SIG SAUER	P220 / P226 / P227 / P229 / P320 / SP2022
STEYR	M9-A1 / L-A1 / M-A1 / C-A1 / S-A1 / L9-A2 MF
CZ	P-07 / P-09 / P-10C / P-10F / P-10S / SHADOW 2 / 75 SP-01 / P-01
WALTER	Q5 / P22 / CCP / CREED / PK380 / P99 / P99C / PPS / PPQ / PPQ SC / PK380
SPRINGFIELD ARMORY	XD MOD.2 SERIES / XD(M) SERIES / XD-S SERIES / XD-S MOD.2 SERIES / XD-E SERIES
HK	VP9 / VP40 / VP9SK / P30 / P30L / P30SK / HK45 / HK45 COMPACT / P2000 / P2000 SK
BERETTA	APX / APX COMPACT / PX4 STORM / PX4 STORM COMPACT / PX4 STORM SUBCOMPACT / M9A3 / M9A1 / 96 A1 / 92A1
GL	G17 / G19 / G19X / G20 / G21 / G22 / G23 / G24 / G29 / G30 / G31 / G32 / G34 / G35 / G36 / G37 / G38 / G40 / G41 / G45
SMITH & WESSON	M&P M2.0 ALL CALIBERS / M&P M2.0 4" COMPACT ALL CALIBERS / M&P M2.0 3.6" COMPACT ALL CALIBERS / M&P 380 SHIELD EZ / M&P 22 COMPACT / SD9 / SD40 / M&P 9 / M&P 40 / M&P 45 / M&P 9C / M&P 40C / M&P 45C

Image: Visual guide showing how the Baldr Mini can be slid forward or backward on the mount for optimal positioning, compatible with GL and Picatinny rail adapters.

3.2 Attaching and Detaching

The light features a swift and safe attachment mechanism. It can be attached and released in seconds with a slight press. The design ensures the light is only activated by a downward push, preventing accidental activation.



Image: Illustration of the swift and safe attachment and release mechanism, showing the light sliding forth and back on the rail.

3.3 Laser Adjustment

The green beam is adjustable for greater accuracy. The range of beam adjustment at a distance of 10 meters is: half-angle adjustment is 3 degrees, full-angle is 6 degrees (meaning the total adjustment angle is 6 degrees).

ACCURATE, EASY TO ADJUST AND KEEP ON ZERO

The green beam is adjustable for accuracy when aiming



You can choose white light
only/green beam only/white
light&green beam

Image: Close-up view of the Baldr Mini showing the adjustment screws for the laser beam (L/R for left/right, U/D for up/down) and the mode selection switch.

SWIFT AND SAFE

Attach and release the light in seconds with a slight press.

The light is only activated by a downward push, which avoids accidental activation.



Image: Demonstrates the laser beam adjustment range, indicating half-angle and full-angle adjustments for precision aiming.

4. OPERATING INSTRUCTIONS

4.1 Powering On/Off and Mode Selection

The Baldr Mini features dual rear switches for smooth momentary-on or constant-on activation, accessible with equal ease from either hand. You can select between white light only, green beam only, or both combined using the mode switch.



Image: Close-up of the mode selection switch on the Baldr Mini, showing options for light only, laser only, or both.

4.2 Charging and Battery Indicator

The device is powered by a built-in lithium polymer battery and recharges via the signature magnetic charging port located at the bottom. A low battery indicator alerts you when recharging is necessary. The light will also show a red indicator when battery power is below 10%.



Image: The Baldr Mini connected to its magnetic charging cable, illustrating the ease of recharging.

5. SPECIFICATIONS

Feature	Detail
Special Feature	Portable, Rechargeable
Color	Black
Power Source	Battery Powered

Light Source Type	LED
Material	Aluminum
White Brightness	600 Lumens
Product Dimensions	2.24"D x 1.29"W x 1.41"H
Voltage	5 Volts
Light Path Distance	130 Meters
Battery Cell Composition	Lithium Polymer
Item Weight	3.1 Ounces
Number of Batteries	1 Lithium Polymer (included)
Water Resistance Level	Waterproof
Runtime	40 minutes
Finish Type	anti-scratch type-III hard anodized finish
Mounting Type	GL and Picatinny rails

6. TROUBLESHOOTING

If you encounter issues with your OLIGHT Baldr Mini, consider the following common troubleshooting steps:

- **Not turning on:** Ensure the battery is fully charged. Check the magnetic charging connection for proper contact.
- **Dim light or weak laser:** Recharge the battery. Performance may decrease with low battery levels.
- **Laser not holding zero:** Ensure the light is securely mounted to the rail. Re-adjust the laser using the provided adjustment screws.
- **Accidental activation:** Verify the light is properly seated and the activation mechanism is not obstructed or being inadvertently pressed. The design is intended to prevent accidental activation from light pressure.

For persistent issues, please refer to the Warranty & Support section or contact OLIGHT customer service.

7. WARRANTY & SUPPORT

The OLIGHT Baldr Mini comes with a **Lifetime Warranty** for products purchased after January 1st, 2023. This warranty covers defects in materials and workmanship.

For detailed warranty information, product support, or to download the full user manual in PDF format, please visit the official OLIGHT website or refer to the provided PDF document:

[Official User Manual \(PDF\): Download PDF](#)

[OLIGHT Brand Store: Visit Store](#)



Image: OLIGHT's commitment to quality, including a lifetime warranty.






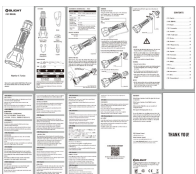
8. OFFICIAL PRODUCT VIDEOS

Watch this video for additional guidance and demonstrations:

Your browser does not support the video tag.

Video: A demonstration of the mounting system and operation of the Baldr Mini. This video is provided by a customer, but it is highly relevant to the product's functionality.

Related Documents - AM-OL-Baldr Mini-US

	Olight Baldr S User Manual - Tactical Weaponlight with Green Laser Comprehensive user manual for the Olight Baldr S tactical weaponlight. Learn about its features including 800 lumens white LED, green laser, magnetic USB charging, and compatibility with 1913 and GL rails. Includes installation, operation, specifications, warnings, and warranty information.
	Olight BALDR S BL User Manual - Tactical Weaponlight Instructions Comprehensive user manual for the Olight BALDR S BL tactical weaponlight, covering installation, operation, specifications, and safety guidelines. Learn how to use your BALDR S BL effectively.
	Olight Baldr Pro Tactical Weaponlight User Manual - Green Laser & LED Comprehensive user manual for the Olight Baldr Pro tactical weaponlight, featuring a green laser and LED. Learn about installation, operation, specifications, and safety warnings.
	Olight BALDR Mini User Manual: Operation, Specifications, and Safety Comprehensive user manual for the Olight BALDR Mini tactical flashlight, covering specifications, installation, operation modes, safety warnings, and warranty information.
	Olight Odin GL Mini User Manual: Operation, Specifications, and Safety Comprehensive user manual for the Olight Odin GL Mini flashlight, covering operation, specifications, charging, installation, safety warnings, and warranty information. Learn how to use and maintain your Odin GL Mini.
	Olight Warrior X Turbo User Manual Comprehensive user manual for the Olight Warrior X Turbo flashlight, detailing specifications, operation, charging, safety warnings, and warranty information.

