

Svater ILE26-0184815

Svater 48FT Outdoor LED String Lights

Model: ILE26-0184815

1. INTRODUCTION

This manual provides instructions for the safe and efficient use of your Svater 48FT Outdoor LED String Lights. Please read this manual thoroughly before installation and operation, and retain it for future reference. These commercial-grade string lights are designed for outdoor use, featuring shatterproof LED bulbs and IP65 waterproofing for durability in various weather conditions.

2. WHAT'S IN THE BOX

- 48FT Outdoor String Lights (1 strand)
- S14 Plastic LED Bulbs (15 + 1 spare)
- User Manual

3. PRODUCT FEATURES

- **Length:** 48 feet with 15+1 S14 plastic LED bulbs.
- **Brightness:** 2W per bulb, 150 lumens, providing a warm 2700K glow.
- **Durability:** ETL Certified with IP65 waterproof rating, designed to withstand rain, sun, wind, snow, and humidity.
- **Construction:** Heavy-duty 18-gauge wire with pure copper wiring and copper sockets for reliable electrical conduction.
- **Connectable:** Features waterproof end connectors, allowing up to 14 strands to be linked for extended coverage.
- **Dimmable:** Compatible with an external dimmer (not included) for adjustable light brightness.
- **Energy Efficient:** Advanced LED bulbs reduce electricity consumption by 90% compared to

incandescent bulbs.

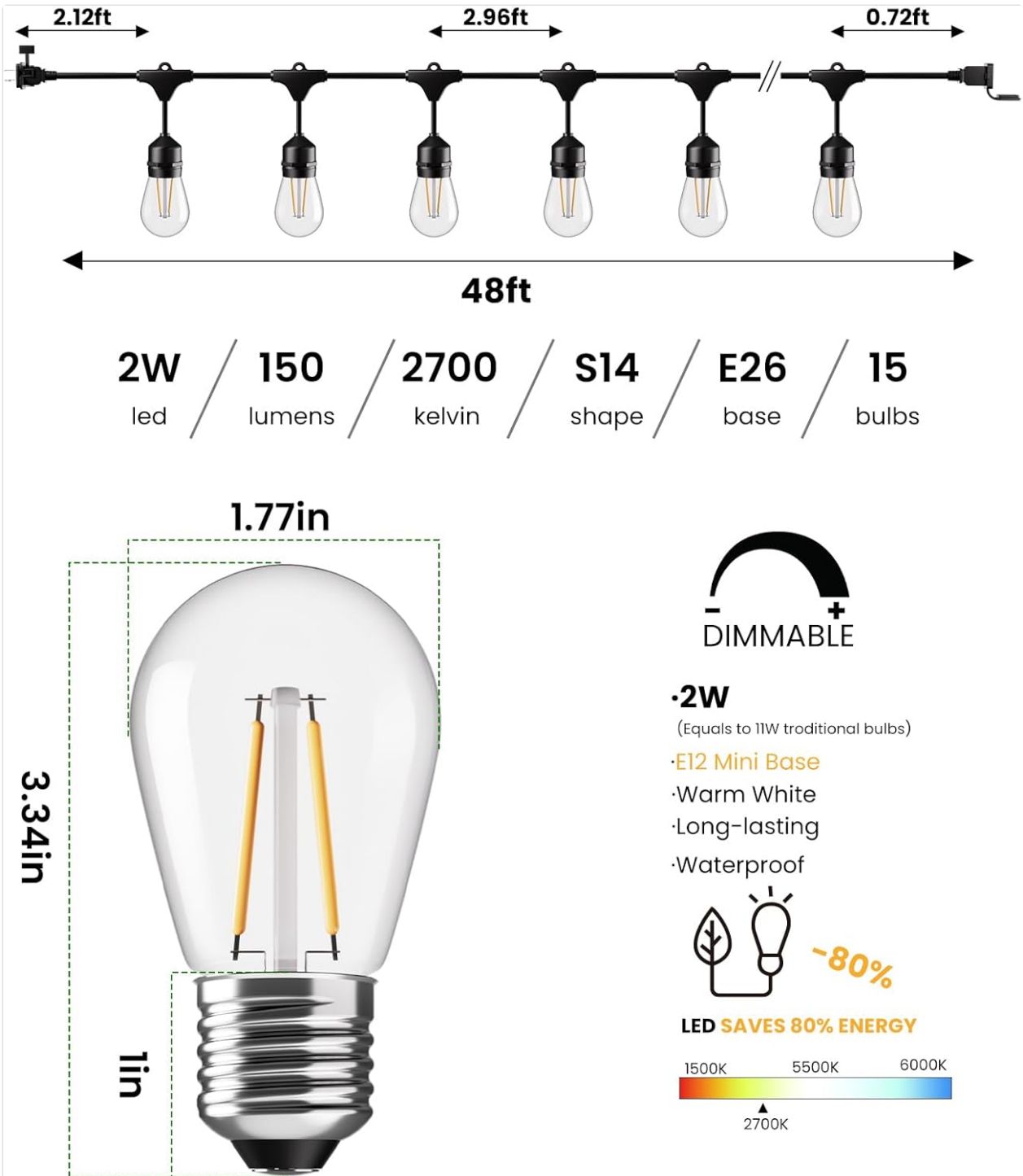


Figure 1: Product Features Overview



Figure 2: IP65 Waterproof Rating



Figure 3: Durable Construction Details

4. SAFETY INFORMATION

- Ensure the power source matches the product's voltage (120 Volts).
- Do not exceed the maximum connectable strands (14 strands).
- Always unplug the string lights before replacing bulbs or performing any maintenance.
- Keep connections dry and secure.
- Do not immerse the plug or any non-waterproof components in water.
- Avoid hanging the string lights in areas where they could be a tripping hazard.

5. SETUP AND INSTALLATION

1. **Unpack:** Carefully remove the string lights and bulbs from the packaging.
2. **Inspect:** Check all bulbs and the string for any damage. Do not use if any damage is found.
3. **Install Bulbs:** Screw each S14 LED bulb into its socket. Ensure they are finger-tight to prevent moisture entry.

4. **Plan Layout:** Determine the desired path for your string lights. Utilize the built-in hanging loops on each socket for secure installation.
5. **Secure Installation:** Use appropriate fasteners such as nails, hooks, guide wires, or zip ties to secure the string lights. Ensure the main cable is supported, not just the individual bulb sockets.
6. **Connect Multiple Strands (Optional):** If connecting multiple strands, align the waterproof end connectors and push them firmly together until they click. Ensure the protective caps are securely fastened over unused connectors.
7. **Power On:** Once fully installed and secured, plug the string lights into a compatible 120V outdoor power outlet.



Figure 4: Connecting Multiple Strands

Your browser does not support the video tag.

Video 1: Svater Outdoor String Lights 2W - This video demonstrates the features and installation methods for the string lights, including their durable construction and various hanging options.

Your browser does not support the video tag.

Video 2: Svater Outdoor String Lights-2W Bulb - This video provides a closer look at the 2W LED bulbs, highlighting their design and brightness.

6. OPERATING INSTRUCTIONS

1. **Power On/Off:** Plug the string lights into a standard 120V outdoor outlet to turn them on. Unplug to turn them off.
2. **Dimming (Optional):** If you wish to adjust the brightness, connect the string lights to a compatible outdoor dimmer (not included). Follow the dimmer's instructions for operation.

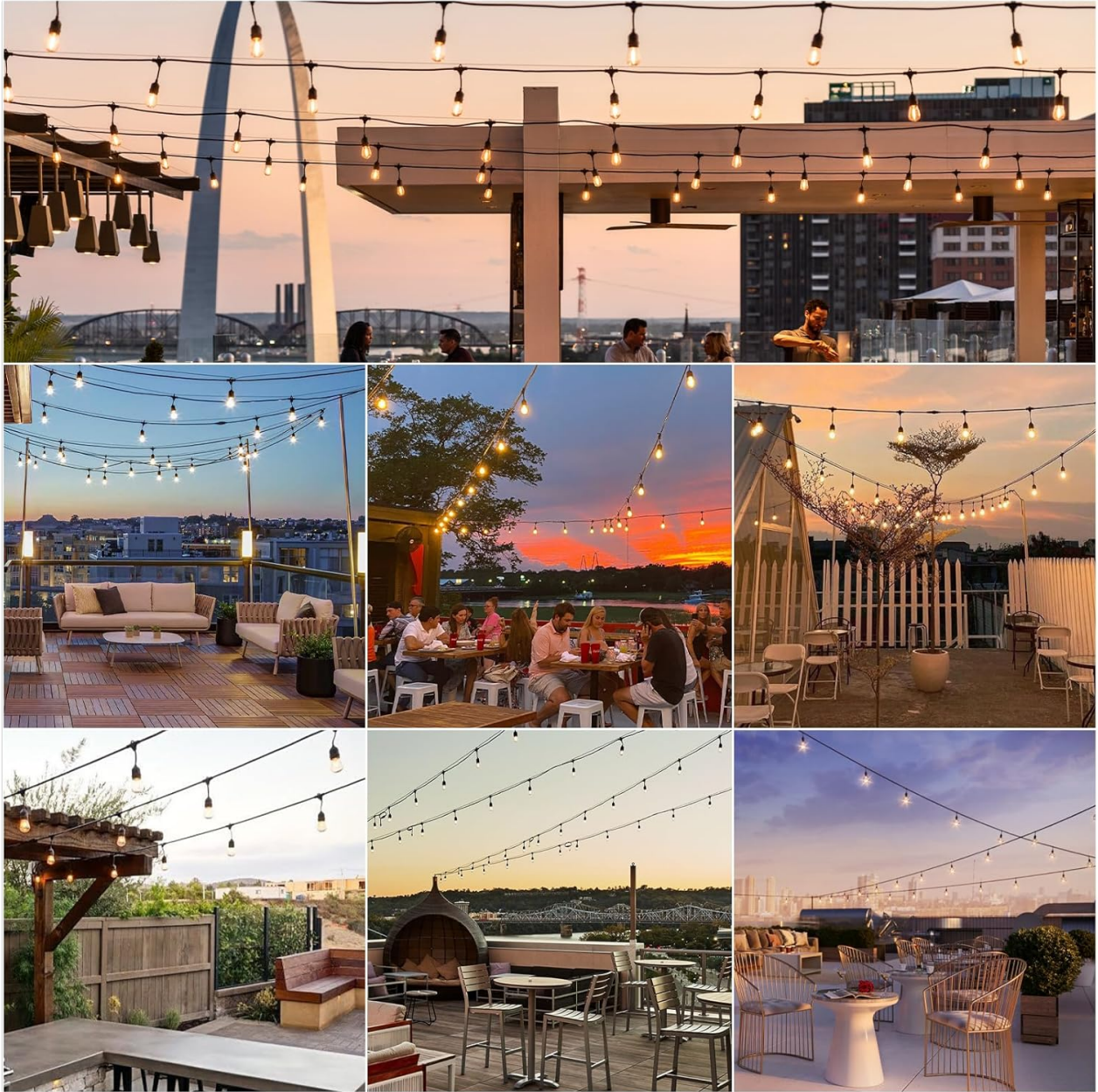


Figure 5: Dimmable Functionality

7. MAINTENANCE

- **Bulb Replacement:** Always unplug the string lights before replacing any bulbs. Carefully unscrew the old bulb and screw in a new S14 LED bulb. Ensure the new bulb is securely tightened to maintain weather resistance.
- **Cleaning:** Periodically wipe the bulbs and cable with a soft, damp cloth. Do not use harsh chemicals or abrasive cleaners.
- **Storage:** If storing the lights for an extended period, clean them thoroughly, coil them neatly, and store them in a cool, dry place.

8. TROUBLESHOOTING

Problem	Possible Cause	Solution
Lights do not turn on.	No power, loose connection, faulty bulb.	Check power outlet, ensure all connections are secure, replace faulty bulb with a spare.
Some bulbs are not lit.	Loose or faulty bulb.	Tighten or replace the unlit bulb(s).
Lights flicker.	Unstable power, incompatible dimmer.	Ensure stable power supply. If using a dimmer, verify compatibility with LED string lights.
Water inside bulb sockets.	Bulbs not tightened properly.	Unplug, dry sockets, and re-tighten bulbs securely.

9. SPECIFICATIONS

Feature	Detail
Brand	Svater
Model Number	ILE26-0184815
Length	48 Feet
Bulb Type	S14 LED, Plastic, Shatterproof
Number of Bulbs	15 + 1 Spare
Wattage per Bulb	2 Watts
Brightness	150 Lumens per bulb
Color Temperature	2700 Kelvin (Warm White)
Bulb Base	E26
Voltage	120 Volts
Ingress Protection (IP) Rating	IP65 (Waterproof)
Certifications	ETL Certified
Connectable	Up to 14 strands
Dimmable	Yes (with compatible dimmer, not included)


Lighting Facts Per Bulb	
Brightness	150 Lumens
Life Based on 4 hrs/day	20 years
Light Appearance 	
Energy Used	2W

Figure 6: Lighting Facts Per Bulb

10. WARRANTY AND SUPPORT

Svater products are manufactured to high-quality standards. For warranty information, technical support, or any questions regarding your product, please contact Svater customer service directly. Refer to the product packaging or the official Svater website for the most current contact details.