



Manuals.plus /

- › TEMCo Industrial /
- › TEMCo TH3030 Dual Size Conduit Offset Bender User Manual

TEMCo Industrial TH3030

TEMCo TH3030 Dual Size Conduit Offset Bender User Manual

Model: TH3030 | Brand: TEMCo Industrial

INTRODUCTION

This manual provides comprehensive instructions for the safe and effective operation and maintenance of your TEMCo TH3030 Dual Size Conduit Offset Bender. This tool is designed to create precise offset bends in both 1/2-inch and 3/4-inch Electrical Metallic Tubing (EMT) conduit. Please read this manual thoroughly before using the product to ensure proper handling and to prevent injury or damage.

IMPORTANT SAFETY INFORMATION

Always wear appropriate personal protective equipment (PPE), including safety glasses and gloves, when operating this tool. Ensure the work area is clear of obstructions and well-lit. Do not use this tool for purposes other than its intended use. Keep hands and fingers clear of moving parts during operation. Inspect the tool for any damage before each use. Do not modify the tool in any way. Store the tool in a dry, secure location away from children and unauthorized users.

PRODUCT OVERVIEW

The TEMCo TH3030 is a versatile 2-in-1 offset bender crafted from lightweight yet durable aluminum. It features interchangeable dies to accommodate both 1/2-inch and 3/4-inch EMT conduit, allowing for quick and accurate offset bends with a single motion. This design eliminates the need for multiple tools and simplifies the bending process for electrical box connections.



TH3030



Figure 1: TEMCo TH3030 Dual Size Conduit Offset Bender.

Key Features:

- **Dual Size Capability:** Bends both 1/2-inch and 3/4-inch EMT conduit with one tool.
- **Quick & Accurate Bends:** Designed for efficient and precise offset bending.
- **Tool-Free Die Change:** Dies can be swapped in under 1 minute without additional tools.
- **Lightweight Construction:** Made from aluminum for ease of use and portability.
- **Durable Design:** Built for professional and industrial applications.

SETUP

Attaching a Handle:

The TEMCo TH3030 bender requires a 3/4-inch threaded pipe bar to serve as a handle. This pipe bar is not included with the bender. Securely thread a suitable 3/4-inch pipe bar into the designated opening on the bender head until it is firmly attached.



Figure 2: The TEMCo TH3030 bender with a handle attached.

Selecting the Correct Die Size:

The bender comes with dies for both 1/2-inch and 3/4-inch EMT conduit. Ensure the correct die size is installed for the conduit you intend to bend. Refer to the "Changing Die Sizes" section for instructions on how to swap dies.

OPERATING INSTRUCTIONS

Making an Offset Bend:

1. **Set Dies:** Ensure the dies are set to the correct size for your conduit (1/2" or 3/4").
2. **Secure Bender:** Place the bender on a secure, stable surface. If necessary, clamp it down to prevent movement during bending.
3. **Insert Conduit:** Insert the EMT conduit into the "high side" of the die. The conduit should exit from the "low side" of the die. For maximum offset, configure the handle and conduit tail to the high side.
4. **Apply Pressure:** Firmly push the handle down to make the bend.
5. **Release & Remove:** Release the handle and carefully remove the bent conduit from the tool.

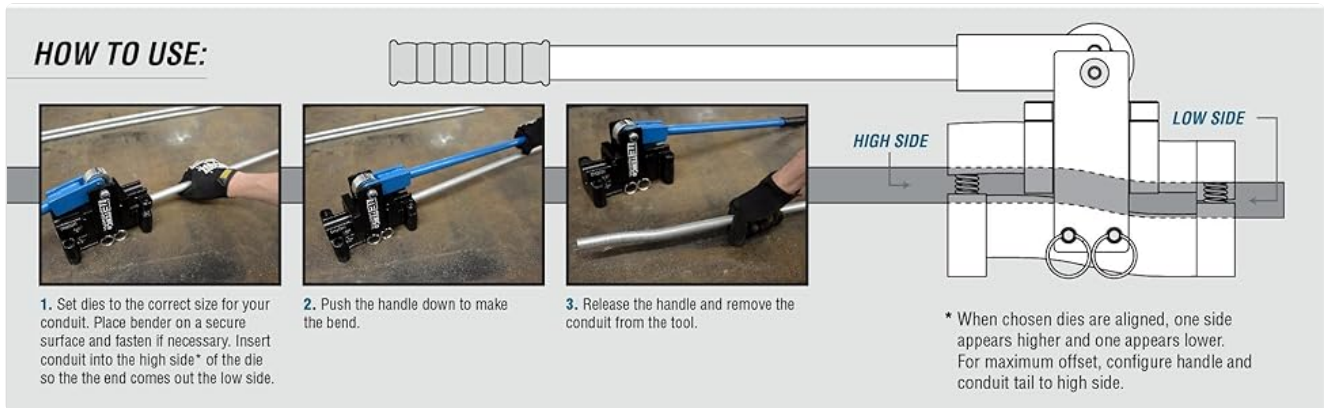


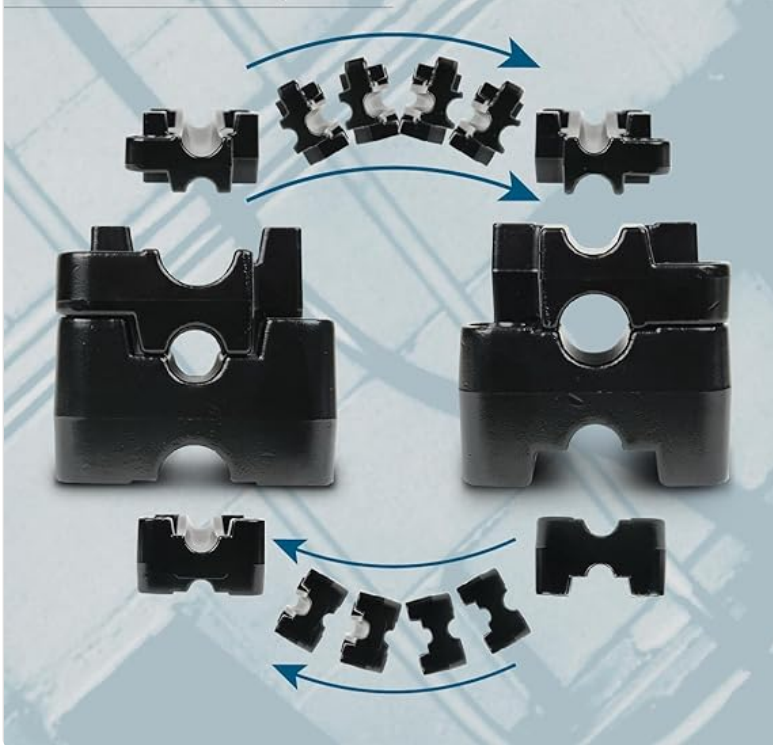
Figure 3: Step-by-step guide for making an offset bend.

Changing Die Sizes (1/2" to 3/4"):

The die change process is tool-free and can be completed in under one minute.

1. **Unfasten Tool:** If the tool is secured, unfasten it from the surface.
2. **Remove Retaining Pins:** Pull and remove the two retaining pins that hold the dies in place.
3. **Lift Handle Assembly:** Lift the handle assembly and the upper pressure plate off the dies. Remove the upper die and the two springs.
4. **Flip Lower Die:** Flip the lower die to expose the desired size (1/2" or 3/4"). Ensure the springs are properly seated in their pockets.
5. **Place Upper Die:** Position the upper die over the springs, matching the alignment marks to the lower die.
6. **Slide Handle Assembly:** Slide the handle assembly over the pressure plate, ensuring alignment marks on the dies match the side plates.
7. **Replace Retaining Pins:** Insert the retaining pins to secure the assembly.

2 OFFSET BENDERS, 1 TOOL



HOW TO CHANGE YOUR DIE SIZE:



1. Tool must be unfastened from surface prior changing sizes. Pull and remove **Retaining Pins**.



2. Lift the **Handle Assembly** and **Pressure Plate** off of dies. Remove the upper die and two springs.



3. Flip the **Lower Die** so the size you want faces up. Replace springs into spring pockets.



4. Place the **Upper Die** over springs matching the alignment marks for that size to the **Lower Die**.



5. Slide the **Handle Assembly** over **Pressure Plate**. Note: make sure to match up alignment marks on the dies to side plates.



6. Replace **Retaining Pins**.

Figure 4: Instructions for changing the die size between 1/2-inch and 3/4-inch.



1/2-inch die setting.



3/4-inch die setting.

MAINTENANCE

- **Cleaning:** After each use, wipe down the bender with a clean, dry cloth to remove any dirt, dust, or metal shavings.
- **Lubrication:** Periodically apply a light coat of machine oil to the moving parts and pivot points to ensure smooth operation and prevent corrosion.
- **Inspection:** Regularly inspect the dies, handle, and retaining pins for signs of wear, damage, or deformation. Replace any worn or damaged components immediately.
- **Storage:** Store the bender in a dry environment to prevent rust and corrosion.

TROUBLESHOOTING

Problem	Possible Cause	Solution
Inconsistent bends	Conduit not properly seated; Worn dies; Tool not secured.	Ensure conduit is fully inserted and aligned. Inspect and replace worn dies. Secure the bender to a stable surface.
Difficulty changing dies	Pins are stuck; Dirt/debris in mechanism.	Clean the pin holes and die areas. Apply a small amount of lubricant to the pins.
Bender feels stiff	Lack of lubrication; Dirt/debris.	Clean and lubricate all moving parts and pivot points.

SPECIFICATIONS

Feature	Detail
Model Number	TH3030
Conduit Sizes	1/2-inch and 3/4-inch EMT
Material	Aluminum
Item Weight	5.49 kg (approximately 12.1 lbs)
Parcel Dimensions	76 x 22.61 x 14.6 cm (approximately 29.9 x 8.9 x 5.7 inches)
Manufacturer	TEMCo Industrial

WARRANTY AND SUPPORT

TEMCo Industrial offers a 5-year guarantee on this product. If the tool breaks, it will be replaced or repaired. For

support, warranty claims, or to inquire about replacement parts, please contact TEMCo Industrial directly through their official website or customer service channels. Keep your purchase receipt as proof of purchase for warranty purposes.



TE **TEMCo**
INDUSTRIAL

THANK YOU!

On behalf of our team here which extends the United States, from New York all the way to Hawaii: thank you to all the customers who have allowed us into your homes, shops, garages, and places of work.

TEMCo Industrial has been a leader in power and industrial equipment and tools since 1968. We're proud to offer quality tools at affordable prices backed by our knowledgeable support. We believe that any DIYer or professional who works with their hands is doing honorable work and so we do our best to respect the trade or craft.

Figure 5: TEMCo Industrial commitment to quality and support.