

Chtoocy CH-668

Chtoocy Wireless Rechargeable Intercom System

MODEL: CH-668

User Instruction Manual

Introduction

This manual provides detailed instructions for the setup, operation, and maintenance of your Chtoocy Wireless Rechargeable Intercom System. Designed for clear and reliable communication, this system offers a convenient solution for homes, businesses, and offices.



Figure 1: Chtoocy Wireless Rechargeable Intercom System units in their charging bases.

Package Contents

Your Chtoocy Wireless Rechargeable Intercom System package includes the following items:

- Intercom Units (2-Pack)
- Charging Adapters
- USB Cables
- Charging Stands
- Detailed User Manual

Product Overview

Familiarize yourself with the components and functions of your intercom unit:

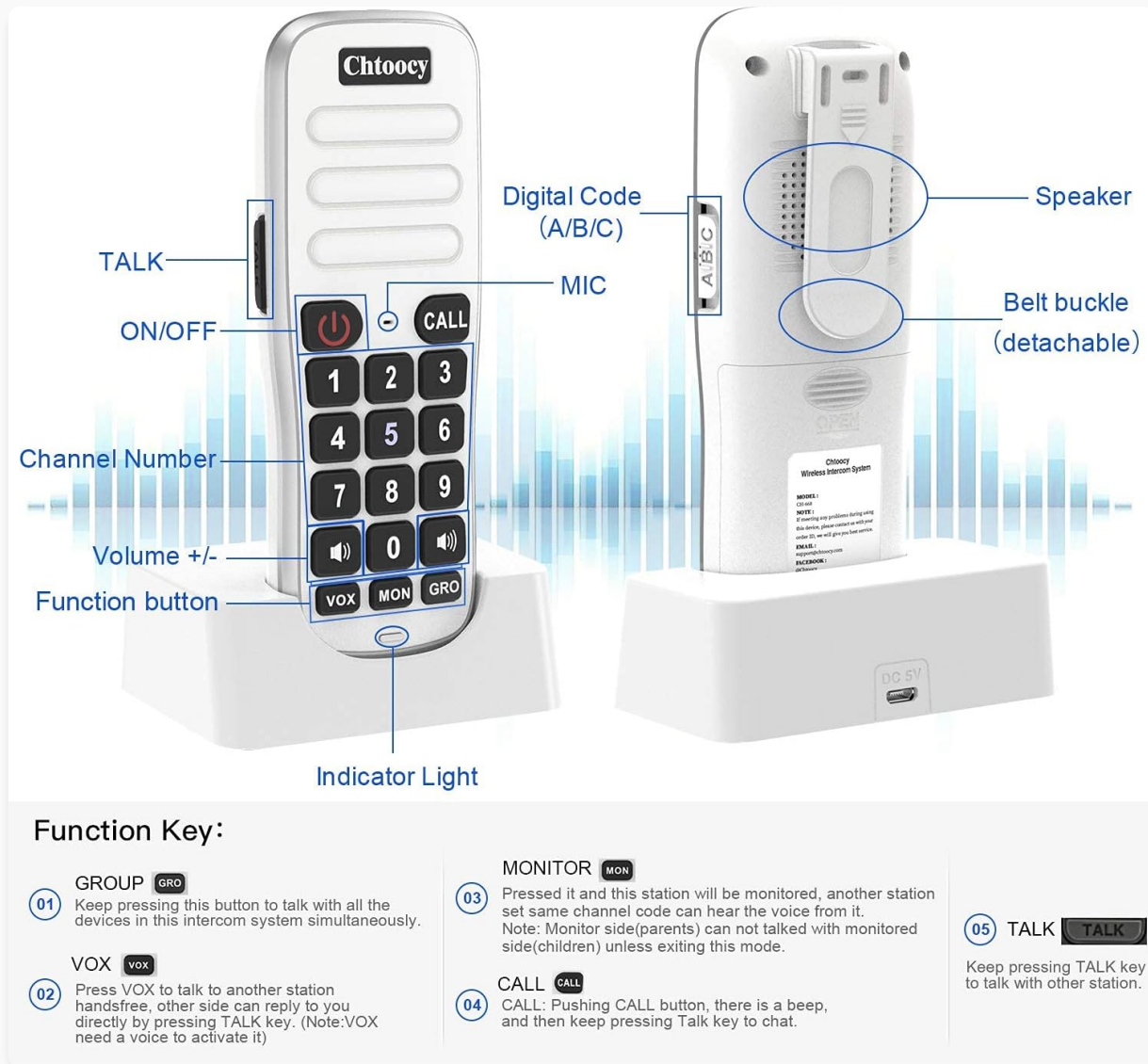


Figure 2: Intercom Unit Function Key Diagram.

Function Key Descriptions:

- **GROUP (GRO)**: Press and hold this button to talk with all devices in the intercom system simultaneously.
- **VOX**: Press VOX to talk to another station hands-free. The other side can reply by pressing the TALK key. VOX needs a voice to activate it.
- **MONITOR (MON)**: Press this button to monitor a station. The monitored station will continuously transmit audio. Useful for monitoring children or elderly.
- **CALL**: Pushing the CALL button initiates a beep, then press and hold the TALK key to chat.
- **TALK**: Press and hold to speak to another station. Release to listen.
- **Volume +/-**: Adjusts the speaker volume.
- **Channel Number**: Selects the communication channel (1-10).
- **Digital Code (A/B/C)**: Selects a security code to avoid interference.

Getting Started

1. Charging the Units

Before first use, ensure the intercom units are fully charged. Connect the USB cable to the charging adapter and plug it into a power outlet. Place the intercom unit into its charging stand. A full charge typically takes 4-6 hours and provides up to 24 hours of work time.

Rechargeable Handheld Design

4-6H

Charging time

24H

Work time

Charging base



Figure 3: Rechargeable Handheld Design and Charging.

2. Setting Channels and Codes

To ensure proper communication and avoid interference, set a unique channel and digital code for each intercom unit. The system supports 10 channels and 3 digital codes (A, B, C).

1. **Power On:** Press and hold the ON/OFF button to turn on the intercom unit.
2. **Set Channel:** Press and hold the desired channel number (1-10) for 3 seconds until you hear a confirmation tone.
3. **Set Digital Code:** Use the A/B/C switch on the side of the unit to select a digital code. Ensure all units intended to communicate are on the same channel and code.

How to set an intercom system



Step1:

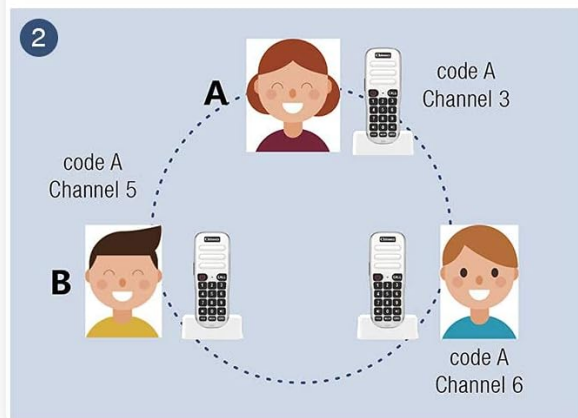
Press&hold the channel key to set your channel.

Click the channel key to call other intercom station(1 minute later will automatically restore the original channel). We suggest that you can set all the station with same code,then you just need to adjust channel to call him,do not have to set code every time when you call different user.

Step2:

Distribute different station for different user.

After you set different channel for each user, please record everyone's device channel code on the paper to prevent forgetting and confusing then distribute to each user. (Note: please keep more than 5 meters away to avoid interference noise);



Step3:

Use it to communication with multi-functions.

After every user get their intercom station. Then you can talk with somebody, just set the channel code of him to call.



Figure 4: How to Set Up an Intercom System.

3. Pairing Multiple Units

To expand your system, additional Chtoocy intercom units can be paired by simply setting them to the same channel and digital code as your existing units.

Operating Instructions

1. Basic Communication (Talk Button)

To initiate a conversation with another unit on the same channel and code:

- Press and hold the **TALK** button.
- Speak clearly into the microphone.
- Release the **TALK** button to listen for a reply.

2. Hands-Free Communication (VOX)

The VOX (Voice Operated Exchange) function allows for hands-free communication:

- Press the **VOX** button once to activate hands-free mode.

- Speak normally; the unit will automatically transmit when it detects your voice.
- The receiving unit can reply by pressing its **TALK** button.

3. Monitoring (MON)

The Monitor function allows continuous audio transmission from a designated unit, acting as a baby monitor or for general area surveillance:

- On the unit you wish to monitor, press the **MON** button.
- This unit will continuously transmit audio to other units on the same channel.
- To exit monitor mode, press the **MON** button again.

4. Group Communication (GRO)

To broadcast a message to all units on the same channel and code:

- Press and hold the **GRO** button.
- Speak your message. All other units will receive the broadcast.
- Release the **GRO** button when finished speaking.

5. Adjusting Volume and Ringtones

Use the **Volume +/-** buttons to adjust the listening volume. The system offers adjustable volume levels and multiple ringtones.

Video 1: Demonstration of how to use the Chtoocy home intercom system, including various functions.

Video 2: Demonstration of the group call function of the Chtoocy home intercom system.

Range and Performance

The Chtoocy intercom system provides a long communication range of up to 1 mile (5280 feet) in open environments. It utilizes anti-interference technology to ensure stable and crystal-clear sound quality, making it suitable for various indoor and outdoor settings.

1 Mile Super Long-Range

Anti-interference technology ensures stable—ideal for home, upstairs, office

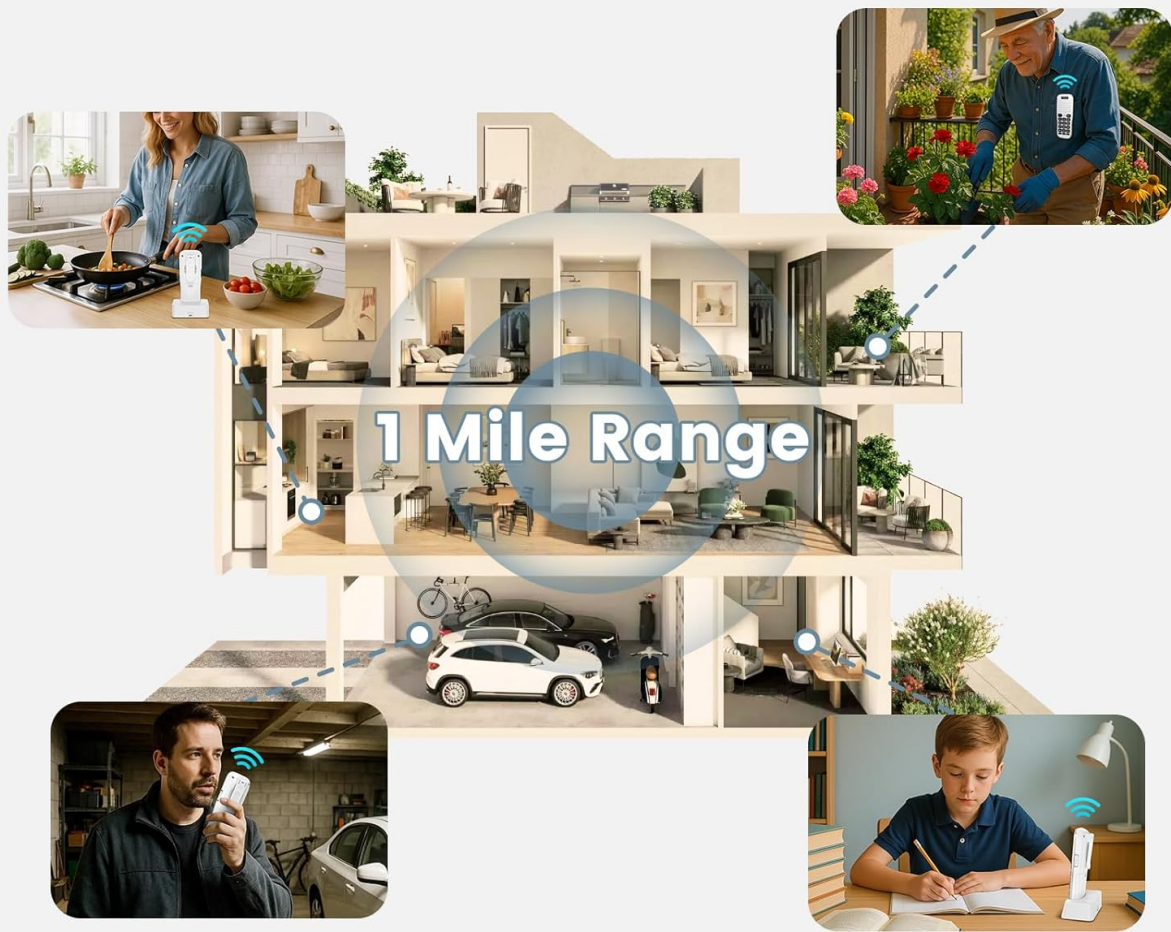


Figure 5: 1 Mile Super Long-Range Communication.

Battery Information

Each handheld intercom unit is equipped with a built-in rechargeable Lithium Ion battery. The battery provides up to 24 hours of continuous use on a full charge. A low battery alert will notify you when recharging is needed. Charging is done via the included charging base and USB cable.

Maintenance

To ensure the longevity and optimal performance of your intercom system, follow these maintenance guidelines:

- Keep units clean by wiping with a soft, dry cloth.
- Avoid exposing units to extreme temperatures or direct sunlight for prolonged periods.
- Store units in their charging bases when not in use to maintain battery health.
- Ensure charging ports are free from dust and debris.

Troubleshooting

If you encounter any issues with your Chtoocy intercom system, please refer to the troubleshooting guide included in your package. Common issues and their solutions are detailed there. For example, if a unit is not charging, try unplugging the battery, charging for 24 hours, then pressing and holding the power button to turn it on.

Specifications

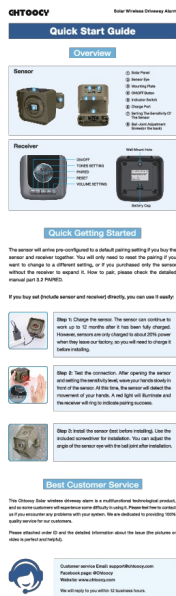
Feature	Detail
Model Number	CH-668
Brand	Chtoocy
Item Weight	1.26 pounds
Package Dimensions	6.38 x 5.48 x 3.62 inches
Batteries	2 Lithium Ion batteries required (included)
Power Source	Battery Powered
Telephone Type	Cordless
Material	Plastic
Range	Up to 1 Mile (5280 feet)
Channels	10
Digital Codes	3 (A/B/C)
UPC	631661960084

Warranty and Support

The Chtoocy Wireless Rechargeable Intercom System comes with a **2-Year Warranty**. For any questions, concerns, or assistance with your purchase, please contact Chtoocy customer service. The product also includes a 30-day money-back guarantee.

Contact Information:

- Email: support@chtoocy.com
- Facebook Page: [@Chtoocy](#)



Chtoocy Solar Wireless Driveway Alarm Quick Start Guide - CH-205

Quick start guide for the Chtoocy Solar Wireless Driveway Alarm system (model CH-205). Learn how to set up, charge, test, and install your driveway alarm for reliable security alerts.



Chtoocy Call Button & Wireless Caregiver Pager: Quick Start Guide

A quick start guide for the Chtoocy Call Button & Wireless Caregiver Pager system (Models CH-1908, CH-1909), detailing product overview, setup instructions, functions, and FCC compliance.



Reliable Door Chime Installation Guide and Parts List

Comprehensive installation guide and parts list for the Reliable Door Chime, featuring easy DIY installation, no batteries required, and a 3-year warranty. Includes instructions for in-swing and out-swing doors.



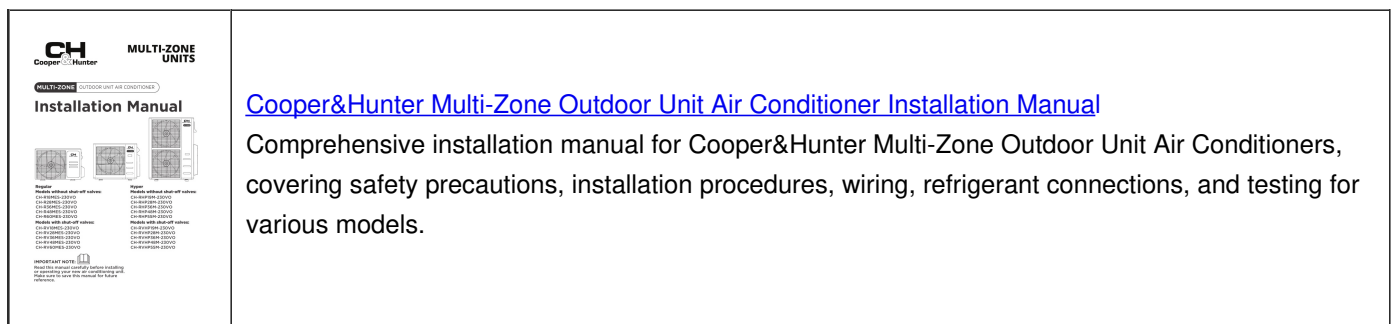
[Cooper Hunter Nordic Commercial Air Conditioners: Cassette, Ducted, Floor-Ceiling, and Inverter Ducted Series](#)

Comprehensive catalog of Cooper Hunter Nordic Commercial air conditioners, detailing specifications, dimensions, features, and accessories for Cassette, Ducted, Floor-Ceiling, and Inverter Ducted types. Includes technical data for models like CH-C, CH-D, CH-F, CH-U, and CH-IBD series.



Cooper & Hunter MIA Series Mini-Split Air Conditioner with Heat Pump Owner's Manual

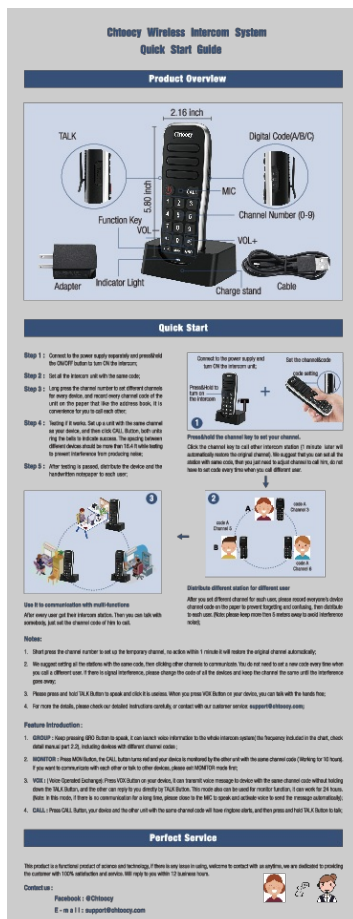
Owner's manual for the Cooper & Hunter MIA Series Mini-Split Air Conditioner with Heat Pump, providing detailed information on safety precautions, unit specifications, features, operating temperatures, care and maintenance, and troubleshooting.



Cooper&Hunter Multi-Zone Outdoor Unit Air Conditioner Installation Manual

Comprehensive installation manual for Cooper&Hunter Multi-Zone Outdoor Unit Air Conditioners, covering safety precautions, installation procedures, wiring, refrigerant connections, and testing for various models.

Documents - Chtoooy – CH-668



[pdf] Guide

1 Chtoooy Rechargeable Intercoms Wireless for Home Mile Range 10 Channel Handheld Intercom System Business Office Room to Communication 2 Packs Black 5280 Feet Expandable 4 CH 668 User Guide B09KNB1J9D B08CSHTCM1 B08CSKDP88 B08CH8XH7 A1TaTR4LQaL m media amazon images | |||

lang: **score:21** filesize: 1.48 M page_count: 1 document date: 2020-06-18



[pdf] User Manual

Chtoooy Rechargeable Intercoms Wireless for Home 1 Mile Range 10 Channel Handheld Intercom System Business Office Room to Communication 2 Packs Black 5280 Feet Expandable 4 CH 668 User Manual B09KNB1J9D B08CSHTCM1 B08CSKDP88 B08CH8XH7 C14s7kz67KS m media amazon images | |||

lang: **score:17** filesize: 4.18 M page_count: 19 document date: 2020-06-18

