



Manuals.plus /

› Arofa /

› Arofa Kitchen Faucet with Pull Down Sprayer (Chrome, Model E02Y11-02-02CP) Instruction Manual

Arofa E02Y11-02-02CP

Arofa Kitchen Faucet with Pull Down Sprayer (Chrome, Model E02Y11-02-02CP) Instruction Manual

Model: E02Y11-02-02CP

INTRODUCTION

This instruction manual provides comprehensive guidance for the installation, operation, and maintenance of your Arofa Kitchen Faucet with Pull Down Sprayer. Please read this manual thoroughly before installation and use to ensure proper function and longevity of the product. Keep this manual for future reference.



Figure 1: Arofa Kitchen Faucet with Pull Down Sprayer, Chrome finish, shown with water flowing from the sprayer head.

SPECIFICATIONS

Feature	Detail
Brand	Arofa
Model Name	Kitchen Faucets with Pull Down Sprayer
Model Number	E02Y11-02-02CP
Finish Type	Chrome
Material	Lead-free metal, High Temperature and Pressure Resistant PEX Hose
Mounting Type	Deck Mount
Number of Handles	1
Hole Count	1 or 3 (with included deck plate)
Special Feature	360° Swivel Spout, Pull Down Sprayer
Maximum Flow Rate	1.8 Gallons Per Minute (gpm) @ 80 psi
Spout Height	15.7 Inches
Spout Reach	8.5 Inches
Hose Length	70 Inches (Pull-down extension up to 20 inches)
Included Components	Deck Plate, User Manual, Mounting Accessories Nut

1 to 3 Hole Kitchen Faucet



Figure 2: Detailed dimensions and compatibility for 1 or 3-hole kitchen sink installations.

INSTALLATION INSTRUCTIONS

Before beginning installation, ensure you have all necessary tools and components. Turn off the main water supply before proceeding.

Components Checklist:

- Faucet body with pull-down sprayer
- Deck plate (for 3-hole installation)
- Mounting nut and washer
- Hot and cold water supply lines (pre-attached)
- Gravity ball weight
- User Manual (this document)

Step-by-Step Installation:

1. **Prepare the Sink Hole:** If installing on a 3-hole sink, place the deck plate over the holes. For a 1-hole sink, the deck plate is optional. Ensure the mounting surface is clean and dry.
2. **Insert Faucet:** Feed the faucet's supply lines and sprayer hose through the sink hole (and deck

plate, if used). Position the faucet body securely on the sink or deck plate.

3. **Secure the Faucet:** From underneath the sink, slide the rubber washer and metal washer onto the threaded shank. Hand-tighten the mounting nut. Ensure the faucet is aligned correctly before fully tightening the nut with a basin wrench or appropriate tool.
4. **Connect Water Supply Lines:** Connect the hot and cold water supply lines from the faucet to your home's hot and cold water valves. Ensure connections are tight to prevent leaks.
5. **Install Gravity Ball:** Attach the gravity ball weight to the pull-down sprayer hose underneath the sink. Position it approximately 6-8 inches from the end of the hose to ensure proper retraction of the sprayer head.
6. **Test for Leaks:** Once all connections are secure, slowly turn on the main water supply and check for any leaks around the connections. Operate the faucet to ensure proper water flow and sprayer function.



Figure 3: Visual representation of the 4-step installation process, including securing the faucet and attaching the gravity ball.



Figure 4: An illustration of the faucet's under-sink components, including the supply lines and gravity ball weight for hose retraction.

OPERATING INSTRUCTIONS

Single Handle Operation:

The single lever handle controls both water flow and temperature. Lift the handle to turn on the water and adjust the flow rate. Move the handle left for hot water and right for cold water.



Figure 5: The single handle allows for precise control of water temperature and flow. Hot and cold indicators are present.

Pull-Down Sprayer with 3 Modes:

The faucet features a pull-down sprayer with an extended 20-inch reach and 360-degree swivel capability for enhanced flexibility. The sprayer head offers three distinct water modes:

- **Stream Mode:** Provides a steady, aerated flow for filling pots and general washing.
- **Spray Mode:** Delivers a powerful, wide spray for rinsing dishes and cleaning the sink.
- **Pause Mode:** Temporarily stops water flow from the sprayer head, useful for avoiding splashes when moving the sprayer between tasks or outside the sink.

Switch between modes using the buttons located on the sprayer head. The gravity ball ensures smooth retraction and secure docking of the sprayer after use.



Figure 6: The sprayer head offers Stream, Spray, and Pause modes, selectable via buttons.



Figure 7: The pull-down sprayer extends up to 20 inches, features 360-degree rotation, and automatically docks back into place.

CARE AND MAINTENANCE

Proper care and maintenance will ensure the longevity and optimal performance of your Arofa kitchen faucet.

Cleaning the Faucet:

- Use a soft cloth and mild soap or a non-abrasive cleaner specifically designed for chrome finishes.
- Avoid abrasive cleaners, harsh chemicals, or scouring pads, as these can damage the finish.
- Rinse thoroughly with clean water and dry with a soft cloth to prevent water spots.

Cleaning the Sprayer Nozzle:

The sprayer nozzle features soft rubber holes that allow for easy removal of mineral build-up. Simply rub the rubber nozzles with your finger or a soft brush to dislodge any deposits and maintain a consistent spray pattern.



Figure 8: The soft rubber nozzles on the sprayer head can be easily cleaned by hand to remove mineral deposits.

Internal Components:

The faucet is equipped with a high-quality ceramic cartridge, tested for 500,000 cycles to ensure leak-proof performance. The PEX hose is designed for high temperature and pressure resistance. These components generally require no user maintenance.

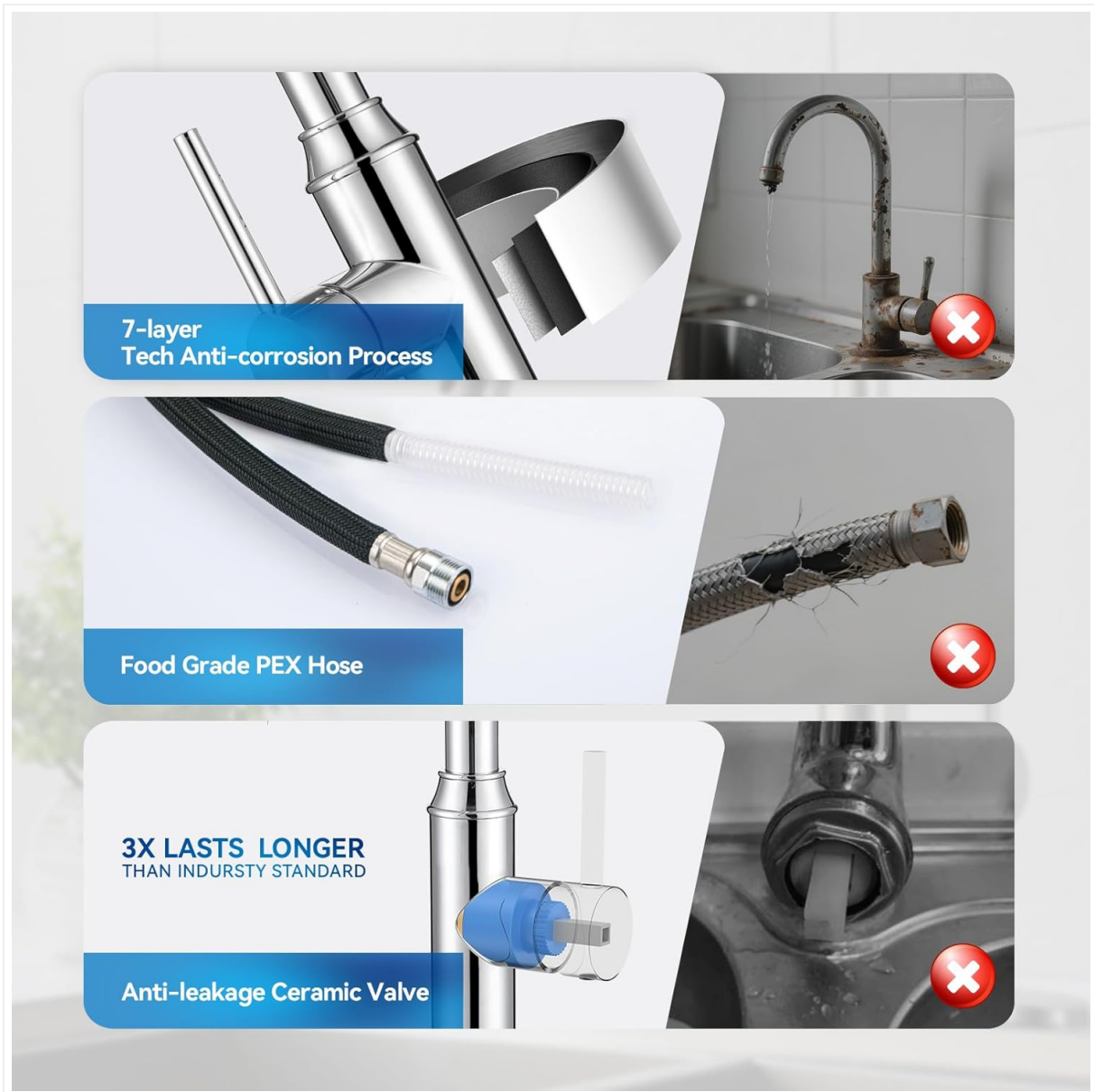


Figure 9: Illustration of the faucet's durable construction, including a 7-layer anti-corrosion finish, food-grade PEX hose, and a ceramic valve for leak prevention.

TROUBLESHOOTING GUIDE

This section addresses common issues you might encounter with your faucet. For problems not listed here, please contact customer support.

Problem	Possible Cause	Solution
Low Water Flow	<ul style="list-style-type: none">• Clogged aerator/nozzle• Partially closed water supply valves• Debris in supply lines	<ul style="list-style-type: none">• Clean sprayer nozzle (refer to Maintenance)• Ensure hot and cold water supply valves are fully open• Flush supply lines (consult a plumber if necessary)
Leaks from Faucet Base	<ul style="list-style-type: none">• Loose mounting nut• Improperly seated O-rings	<ul style="list-style-type: none">• Tighten mounting nut underneath the sink• Inspect and reseal O-rings (may require professional assistance)
Sprayer Does Not Retract Fully	<ul style="list-style-type: none">• Gravity ball weight improperly positioned or obstructed• Hose kinked or obstructed under sink	<ul style="list-style-type: none">• Adjust the position of the gravity ball weight• Clear any obstructions or kinks in the sprayer hose
Water Temperature Issues	<ul style="list-style-type: none">• Incorrect handle position• Water heater issues• Cross-connection of supply lines	<ul style="list-style-type: none">• Adjust handle to desired hot/cold position• Check water heater settings• Verify supply line connections (hot to hot, cold to cold)

WARRANTY INFORMATION

The Arofa Kitchen Faucet (Model E02Y11-02-02CP) comes with a **5-year limited warranty** from the date of purchase. This warranty covers manufacturing defects in materials and workmanship under normal use. It does not cover damage resulting from improper installation, misuse, abuse, accident, or normal wear and tear.

Please retain your proof of purchase for warranty claims. For detailed warranty terms and conditions, please contact Arofa customer service.

CUSTOMER SUPPORT

If you have any questions, require assistance with installation, or need to make a warranty claim, please contact our customer support team. We are committed to providing 24-hour customer service.

Online Support: Visit the official Arofa website for FAQs and support resources.

Email Support: [Insert Customer Service Email Here, if available]

Phone Support: [Insert Customer Service Phone Number Here, if available]



Figure 10: Arofa offers 24-hour customer service, a 5-year warranty, and a 30-day return policy.