



Manuals.plus /

- › GARAGE STOP /
- › GARAGE STOP 893LM / 893Max Garage Door Opener Remote Instruction Manual

## GARAGE STOP 893LM / 893Max

# GARAGE STOP 893LM / 893Max Garage Door Opener Remote Instruction Manual

Model: 893LM / 893Max

<a href="#">Programming</a>	<a href="#">Overview Operation</a>	<a href="#">Compatibility Maintenance</a>	<a href="#">Setup &amp; Specifications</a>	<a href="#">Safety</a>
-----------------------------	--	---	--	------------------------

## 1. OVERVIEW

---

The GARAGE STOP 893LM / 893Max Garage Door Opener Remote is designed to provide convenient and reliable access to your garage. This remote is compatible with a wide range of Chamberlain, LiftMaster, and Craftsman garage door openers manufactured from 1993 to the present. It features a three-button design, allowing control of up to three different garage doors or gates. The remote utilizes Security+ 2.0 rolling code technology for enhanced security and offers a long operating range of up to 120 feet.



**ONLY Compatible With:**  
**Chamberlain, Liftmaster, Craftsman**



**One Remote, Multiple Doors**  
**Multichannel, Controls Up to 3 Garage Doors**



**Advanced Security+ 2.0**  
**Eliminate Radio Wave Interferences**



**Long Range Distance**  
**120 Feet Range, no more waiting roll-in access**



**High Quality Replacement**  
**Small & Light with visor clip and batteries**

**GARAGESTOP**  
*One stop for all your garage door needs*

**\*NOT compatible with MyQ / NOT Compatible with DIP Switch\***

Image: The GARAGE STOP 893LM / 893Max remote control, featuring three gray buttons and a red LED indicator.

## 2. COMPATIBILITY

This remote is compatible with Chamberlain, LiftMaster, and Craftsman garage door openers manufactured from 1993 to the present. It supports all five Learn Button colors: Yellow, Purple, Red, Orange, and Green. Please verify your garage door opener's Learn Button color and manufacturing year for proper compatibility.

**NOTE: This remote is NOT compatible with DIP switch, MyQ, Genie, or Overhead models.**

# Compatibility Guide

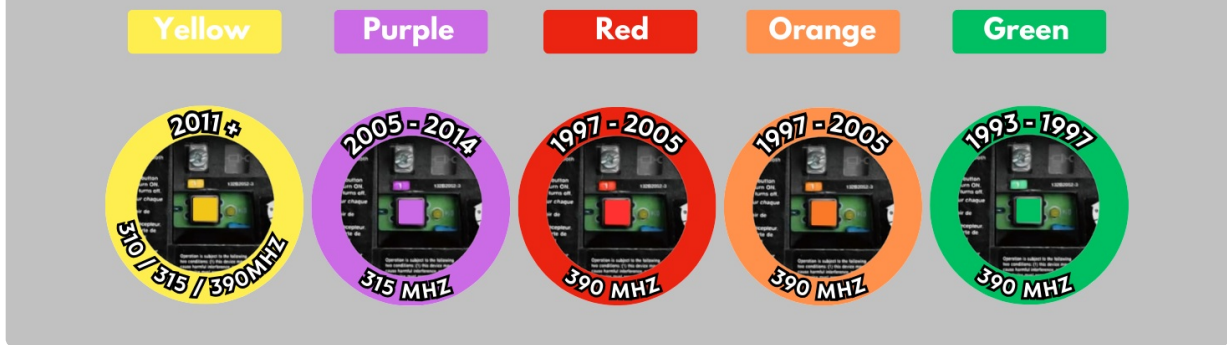


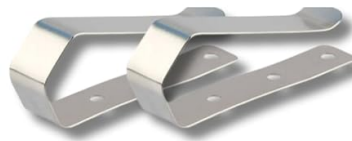
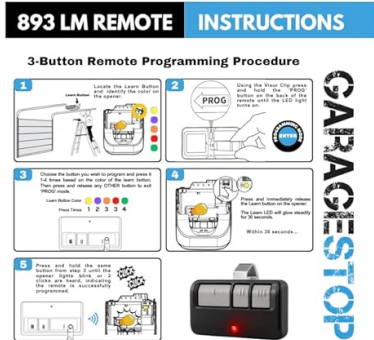
Image: A compatibility chart showing different Learn Button colors (Yellow, Purple, Red, Orange, Green) and their corresponding manufacturing years and frequencies.

## 3. PACKAGE CONTENTS

- GARAGE STOP 893LM / 893Max Remote Control (Quantity: 2)
- CR2032 Battery (pre-installed in each remote)
- Visor Clip (Quantity: 2)
- Do-It-Yourself Programming Instructions

# Included with Purchase

## Remote Control



## Program Guide

## Visor Clip

## Battery

Image: A visual representation of the package contents, including two remote controls, two visor clips, and two CR2032 batteries.

### 4. SETUP & PROGRAMMING

Follow these steps to program your GARAGE STOP remote control to your garage door opener. The process varies slightly depending on the color of your opener's Learn Button.

#### General Programming Procedure (3-Button Remote)

- 1. Locate the Learn Button:** On your garage door opener unit, locate the Learn Button. Identify its color (Yellow, Purple, Red, Orange, or Green).
- 2. Enter Programming Mode on Remote:** Using the visor clip or a small pointed object, press and hold the 'PROG' button on the back of the remote until the red LED light on the remote turns on.
- 3. Select Button and Press:** Choose the button on the remote you wish to program. Press it 1-4 times based on the color of your opener's Learn Button (refer to the compatibility chart or your opener's manual for the exact number of presses). Then, press and release any OTHER button on the remote once to exit 'PROG' mode.
- 4. Activate Opener's Learn Mode:** Press and immediately release the Learn Button on your garage

door opener. The Learn LED on the opener will glow steadily for 30 seconds.

5. **Finalize Programming:** Within 30 seconds, press and hold the same button on the remote that you chose in step 3. Continue holding until the opener lights blink or two clicks are heard, indicating the remote is successfully programmed.

# 893 LM REMOTE INSTRUCTIONS

R27

## 3-Button Remote Programming Procedure

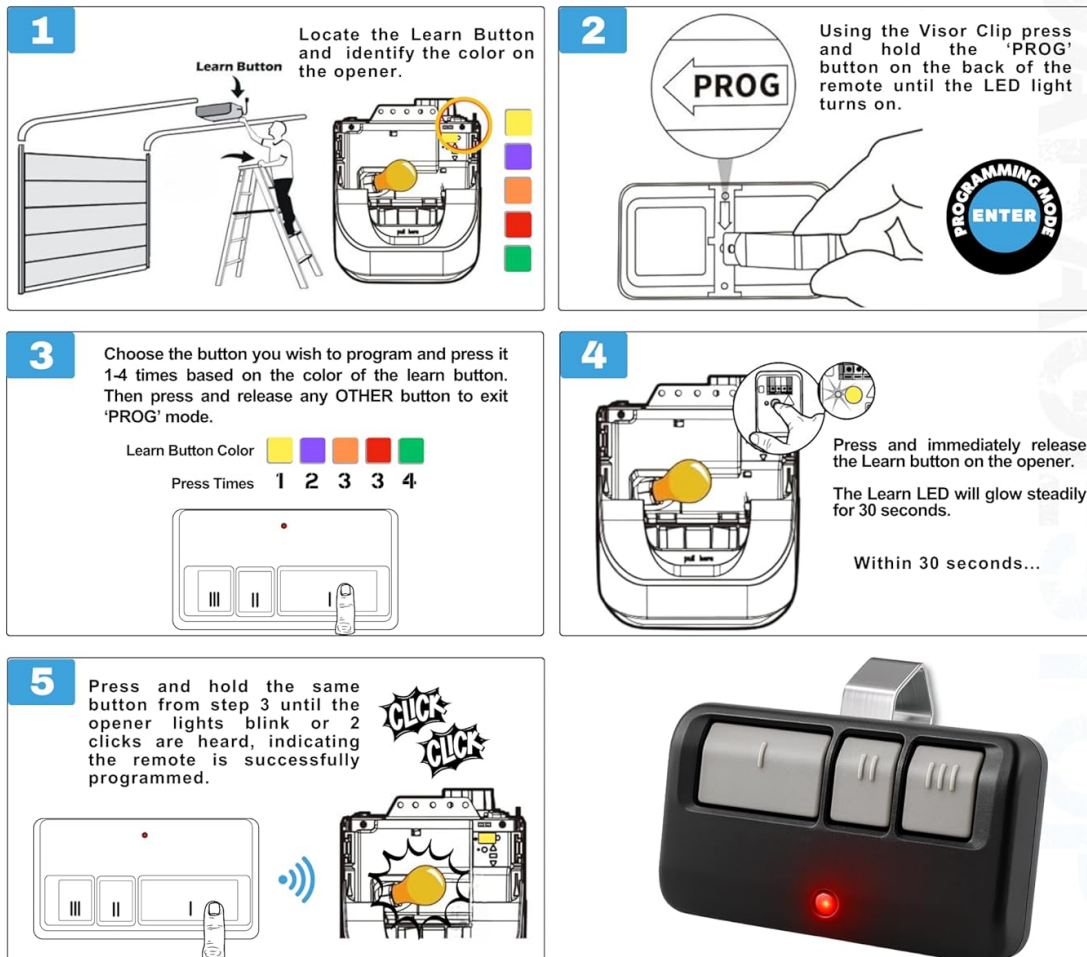


Image: A step-by-step diagram illustrating the programming procedure for the 3-button remote, showing the remote and a garage door opener unit.

### Programming Video Tutorial

Video: Official GARAGE STOP tutorial on how to program the remote to a garage door opener, demonstrating steps for different learn button colors.

### 5. OPERATING INSTRUCTIONS

Once programmed, operating your GARAGE STOP remote is straightforward:

- **Opening/Closing:** Press the programmed button on the remote once to open or close your garage door.
- **Stopping Mid-Cycle:** Press the programmed button again while the door is in motion to stop it.

- **Multi-Door Control:** If you have programmed multiple doors, ensure you press the correct button corresponding to the desired door.
- **Long Range:** The remote offers a 120-foot long-range operation, allowing you to activate your garage door from a distance.

## 6. MAINTENANCE

### Battery Replacement

The remote uses a CR2032 Lithium Metal battery. If the remote's LED indicator does not light up or the range decreases significantly, it may be time to replace the battery.

1. Locate the battery compartment on the back of the remote.
2. Use a small coin or screwdriver to gently pry open the battery cover.
3. Remove the old CR2032 battery.
4. Insert a new CR2032 battery with the positive (+) side facing up.
5. Snap the battery cover back into place.

**NOTE: Dispose of old batteries properly according to local regulations.**

## 7. TROUBLESHOOTING

Problem	Possible Cause	Solution
Remote does not work after programming.	Incorrect programming steps, incompatible opener, or dead battery.	Verify compatibility. Re-attempt programming carefully following all steps. Replace battery.
Remote has reduced range.	Weak battery or interference.	Replace the CR2032 battery. Ensure no large metal objects are obstructing the signal path.
Garage door opens/closes unexpectedly.	Interference or accidental button press.	Ensure remote is not being accidentally pressed. Check for strong radio interference sources. Reprogram if necessary.
Remote LED does not light up.	Dead battery.	Replace the CR2032 battery.

## 8. SPECIFICATIONS

- **Model:** 893LM / 893Max
- **Brand:** GARAGE STOP
- **Compatibility:** Chamberlain, LiftMaster, Craftsman (1993-present, all 5 Learn Button colors)
- **Number of Buttons:** 3 (controls up to 3 devices)
- **Technology:** Security+ 2.0 rolling code
- **Operating Range:** Up to 120 feet
- **Battery Type:** CR2032 Lithium Metal (1 required per remote)

- **Dimensions:** Approximately 4.7 x 2.8 x 1.1 inches
- **Weight:** Approximately 2.89 ounces
- **Special Features:** Ergonomic, Lightweight, Visor Clip included

## 9. SAFETY INFORMATION

---

- Always keep remote controls out of reach of children.
- Never allow children to operate or play with the garage door remote controls.
- Keep the garage door in sight when operating the remote.
- Ensure the path of the garage door is clear of people and objects before operating.
- Test the safety reversal system of your garage door opener monthly.

## 10. SUPPORT

---

For additional assistance with programming or troubleshooting, please refer to the included Do-It-Yourself programming instructions. Support resources may also be available through the GARAGE STOP brand's official channels.