

## Lepro 500014

# Lepro Remote Controller for Tunable White LED Strip Light User Manual

Model: 500014

## INTRODUCTION

Thank you for choosing the Lepro Remote Controller for your Tunable White LED Strip Light. This manual provides detailed instructions for setting up, operating, and maintaining your remote control to ensure optimal performance and longevity. Please read this manual thoroughly before use and retain it for future reference.

## PRODUCT OVERVIEW

The Lepro Remote Controller is designed to provide convenient control over your tunable white LED strip lights, allowing you to adjust brightness, color temperature, and activate various lighting modes.





Image: Front view of the Lepro Remote Controller.

### Remote Control Button Functions

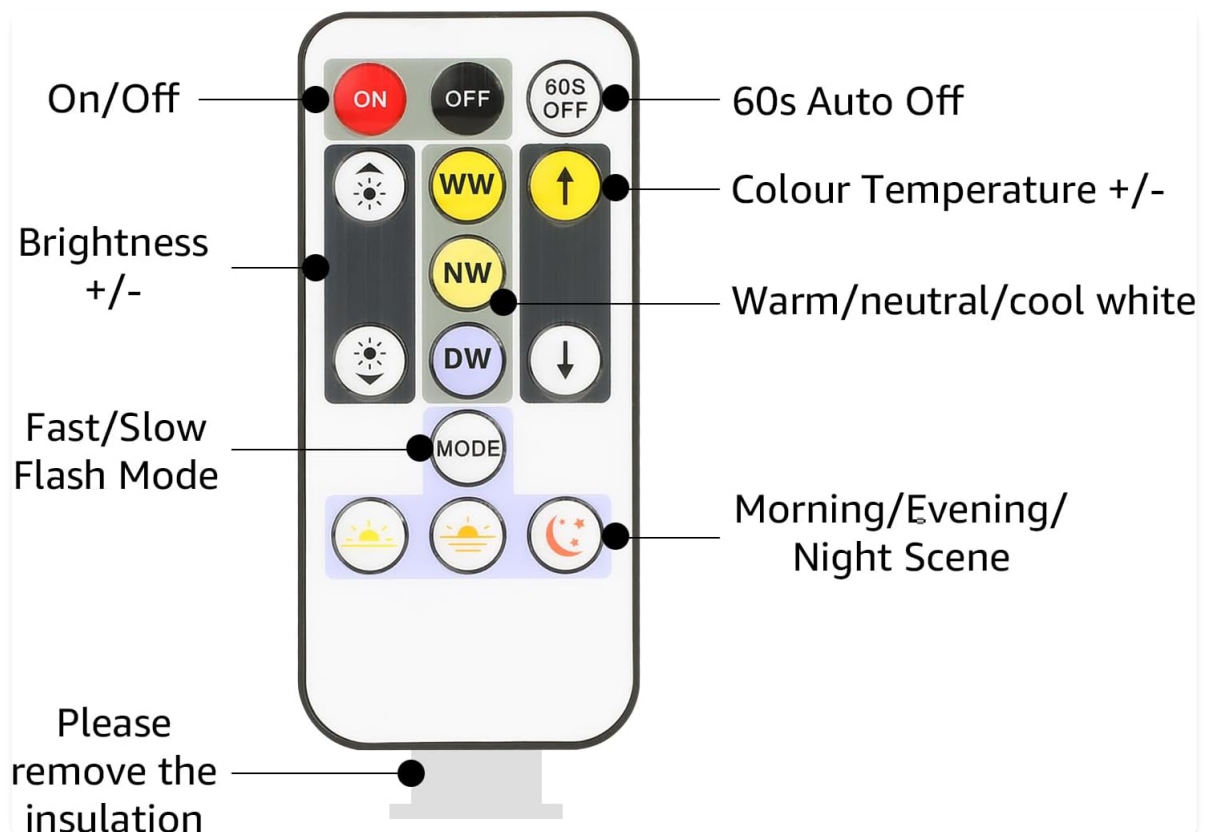


Image: Diagram illustrating the functions of each button on the Lepro Remote Controller.

- **ON/OFF Buttons:** Power on or off the LED strip light.
- **60S OFF Button:** Activates a 60-second auto-off timer.
- **Brightness +/- Buttons:** Adjust the brightness level of the light.
- **WW (Warm White) Button:** Sets the light to a warm white color temperature.
- **NW (Neutral White) Button:** Sets the light to a neutral white color temperature.
- **DW (Daylight White) Button:** Sets the light to a daylight white (cool white) color temperature.
- **Colour Temperature +/- Buttons:** Fine-tune the color temperature between warm and cool white.
- **MODE Button:** Cycles through fast/slow flash modes.
- **Scene Buttons (Morning/Evening/Night):** Activates pre-set lighting scenes.

## SETUP

### Battery Installation

The remote controller requires 1 Lithium Metal battery (included). Before first use, please remove the insulation sheet from the battery compartment.

### ON / OFF

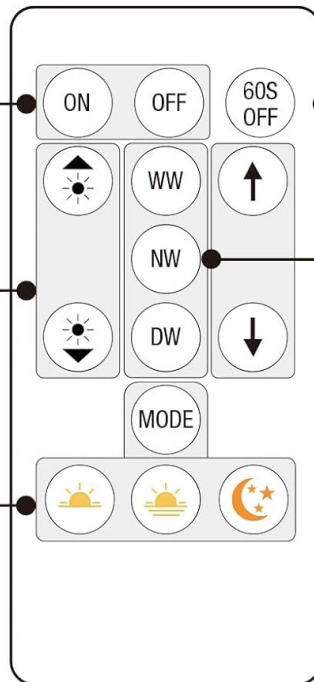
EIN / AUS  
ON / OFF  
ENCENDIDO / APAGADO  
ON / OFF

### Brightness

Helligkeit  
Luminosité  
Brillo  
Luminosità

### 3 Modes

3 Modi  
3 Modes  
3 Modos  
3 Modalità



### 60s Auto Off

60s Auto Aus  
60 s Arrêt Automatique  
60s Apagado Automático  
60s Off Automaticamente

### Color Temperature

Farbtemperatur  
Température de Couleur  
Temperatura de Color  
Temperatura di Colore

### Please remove the insulation sheet before use.

Bitte entfernen Sie die Isolierfolie vor dem Gebrauch.  
Veuillez retirer la feuille d'isolation avant utilisation.  
Retire la lámina de aislamiento antes de usar.  
Rimuovere il foglio isolante prima dell'uso.

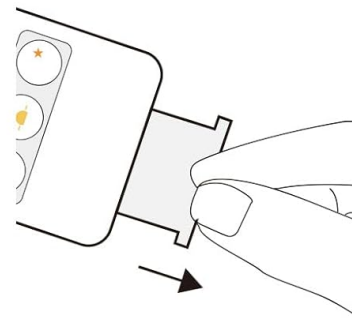


Image: Illustration showing how to remove the insulation sheet from the battery compartment.

1. Locate the battery compartment on the back of the remote control.
2. Pull out the plastic insulation sheet if it is present.
3. If replacing the battery, open the battery cover and insert the new battery, ensuring correct polarity (+/-).
4. Close the battery cover securely.

### Pairing (If Applicable)

This remote control uses Radio Frequency (RF) technology and is typically pre-paired with compatible Lepro tunable white LED strip lights (e.g., models 410098, 410049). If your remote does not respond to the light strip, ensure the light strip is powered on and within the maximum range of 10 meters. No manual pairing procedure is usually required for this model.

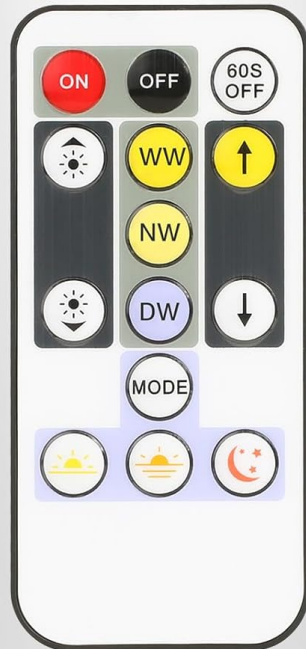
## OPERATING INSTRUCTIONS

Once the battery is installed, you can begin controlling your LED strip light.

- **Power On/Off:** Press the **ON** button to turn the light on, and the **OFF** button to turn it off.
- **Brightness Adjustment:** Use the **Brightness +/-** buttons (sun icon with up/down arrows) to increase or decrease the light intensity.

- **Color Temperature Selection:**

- Press **WW** for Warm White.
- Press **NW** for Neutral White.
- Press **DW** for Daylight White (Cool White).



### Warm to Cool White

- 3 Pre-set Color Temperature
- 2 Jump Mode
- Dimmable



Image: Visual representation of Warm White, Natural White, and Cool White color temperatures.

- **Fine-tuning Color Temperature:** Use the **Colour Temperature +/-** buttons (yellow up/down arrows) to incrementally adjust the color temperature.
- **Flash Modes:** Press the **MODE** button to cycle through different fast/slow flash modes.
- **Scene Modes:** Select pre-set scenes using the dedicated buttons:
  - **Morning Scene:** (Sunrise icon)
  - **Evening Scene:** (Sunset icon)
  - **Night Scene:** (Moon and stars icon)
- **60-Second Auto Off:** Press the **60S OFF** button to activate a timer that will turn off the light after 60 seconds.

## MAINTENANCE



## Cleaning

To clean the remote controller, gently wipe it with a soft, dry cloth. Do not use abrasive cleaners, solvents, or immerse the remote in water.

## Battery Replacement

If the remote control's range decreases or it becomes unresponsive, the battery may need to be replaced. Refer to the "Battery Installation" section under Setup for instructions.

**Note:** Dispose of used batteries responsibly according to local regulations.

## TROUBLESHOOTING

Problem	Possible Cause	Solution
Remote not responding to light strip.	<ul style="list-style-type: none"><li>• Battery is dead or low.</li><li>• Insulation sheet not removed.</li><li>• Remote is out of range.</li><li>• Light strip is not powered on.</li></ul>	<ul style="list-style-type: none"><li>• Replace the battery.</li><li>• Remove the insulation sheet.</li><li>• Move closer to the light strip (within 10 meters).</li><li>• Ensure the light strip is properly connected and powered.</li></ul>
Limited range of control.	<ul style="list-style-type: none"><li>• Low battery.</li><li>• Obstructions between remote and light strip.</li></ul>	<ul style="list-style-type: none"><li>• Replace the battery.</li><li>• Ensure a clear line of sight or reduce obstructions.</li></ul>

## SPECIFICATIONS

- **Model:** 500014
- **Brand:** Lepro
- **Product Dimensions:** 8.5 x 4 x 0.7 cm
- **Weight:** 20 g
- **Battery:** 1 Lithium Metal battery (required)
- **Connectivity Technology:** Radio Frequency (RF)
- **Maximum Range:** 10 Metres
- **Number of Buttons:** 14
- **Compatible Devices:** Lepro LED Strip Light 410098, LED Strip Light 410049

## IMPORTANT INFORMATION

### Light Bulb Recycling

For information on recycling this product and other types of lamps, please consult local recycling guidelines and facilities.

### Light Bulb Breakage and Clean Up Information

In case of breakage or damage to associated light bulbs, follow proper clean-up and disposal procedures as recommended by local authorities. Avoid direct contact with broken glass or internal

components.







## WARRANTY AND SUPPORT

For warranty information and customer support, please refer to the official Lepro website or contact your retailer. Keep your purchase receipt as proof of purchase.

For further assistance, you may visit the [Lepro Store on Amazon](#).

© 2024 Lepro. All rights reserved.

### Related Documents - 500014

	<p><a href="#">Smart Life App User Guide: Connecting Smart Devices</a></p> <p>Comprehensive guide to connecting and controlling Smart Life compatible smart bulbs, LED strips, and other Wi-Fi devices using the Smart Life app. Learn how to pair devices, manage rooms, and integrate with Amazon Alexa and Google Assistant.</p>
	<p><a href="#">Lepro S1 Smart LED Strip Lights User Manual</a></p> <p>Comprehensive user manual for the Lepro S1 Smart LED Strip Lights (Model: 2A3MAS1), detailing installation, operation, and features.</p>
	<p><a href="#">LE Lighting Ever LED Light Strip User Manual</a></p> <p>User manual for the LE Lighting Ever LED Light Strip, detailing packing contents, specifications, remote control functions, DIY color customization, and battery replacement.</p>
	<p><a href="#">Lepro LED Light Strip User Manual and Specifications</a></p> <p>User manual for Lepro LED Light Strips (Model PR4100067 series). Includes installation, safety, specifications, and disposal information.</p>
	<p><a href="#">Lepro S1 Smart LED Strip Light: Installation, Features, and Safety Guide</a></p> <p>Comprehensive guide for the Lepro S1 Smart LED Strip Light, covering installation, app connection, voice control integration, safety precautions, technical specifications, and warranty information.</p>
	<p><a href="#">Lepro R2 Smart LED Downlight Installation and User Guide</a></p> <p>Comprehensive guide for installing and using the Lepro R2 Smart LED Downlight, covering app connection, voice control setup, mounting, and safety information.</p>