

## VOVO TCB-090S

# VOVO STYLEMENT TCB-090S Smart Bidet Toilet User Manual

Model: TCB-090S

## INTRODUCTION

This manual provides detailed instructions for the installation, operation, and maintenance of your VOVO STYLEMENT TCB-090S Smart Bidet Toilet. This advanced toilet features an automatic dual flush system, a heated seat, warm water and dryer functions, a wireless remote control, and an auto-deodorization system. Please read this manual thoroughly before installation and use to ensure proper function and safety.

## SAFETY INFORMATION

Observe all safety precautions to prevent injury or damage.

- **Electrical Safety:** The unit requires a 120 Volt electrical outlet. Ensure the outlet is properly grounded and installed according to local electrical codes. Do not use extension cords.
- **Water Supply:** Ensure the water supply is turned off before beginning installation.
- **Weight:** The toilet unit is heavy (approximately 110 pounds). Exercise caution and seek assistance during lifting and placement to prevent injury.
- **Cleaning:** Disconnect power before cleaning. Use only mild, non-abrasive cleaners.

## PACKAGE CONTENTS

Verify that all components are present before installation.

- VOVO STYLEMENT TCB-090S Smart Bidet Toilet Unit
- Wireless Remote Controller
- Installation Kit (includes proprietary wax ring, bolts, water line fittings)
- User Manual (this document)

## INSTALLATION

Professional installation is recommended. Ensure all local plumbing and electrical codes are followed.

## 1. Preparation

- Turn off the main water supply to the toilet area.
- Remove the existing toilet. Clean the flange area thoroughly.
- Ensure a 120V grounded electrical outlet is available within reach of the toilet's power cord.
- Verify product dimensions for proper fit: 28.3"D x 16.1"W x 21"H.



Figure 1: Product dimensions and electrical outlet requirement. An outlet is required for operation.

## 2. Toilet Placement

- Install the provided proprietary wax ring onto the bottom of the toilet unit, not directly on the floor flange.
- Carefully align the toilet with the floor bolts and lower it into place. Due to its weight (110 lbs), assistance is recommended.
- Once seated, gently press down on the toilet to ensure a proper seal with the wax ring.
- Tighten the floor bolts securely, but do not overtighten to avoid cracking the ceramic.



Figure 2: Lowering the toilet unit onto the floor bolts for installation.

### 3. Water Connection

- Connect the water supply line to the toilet's inlet using the supplied fittings. Ensure all connections are hand-tightened, then use a wrench for a final quarter-turn.
- Slowly turn on the main water supply and check for leaks.



Figure 3: Connecting the water supply line to the toilet unit.

### 4. Electrical Connection

- Plug the toilet's power cord into the grounded 120V electrical outlet.



Figure 4: Plugging the power cord into a grounded electrical outlet.

## OPERATION

Your VOVO STYLEMENT TCB-090S is equipped with various smart features for enhanced comfort and hygiene.

### Automatic Dual Flush

The smart seat sensor detects the duration of use to automatically select between a small flush or a full flush (1.12 GPF at 35 PSI), providing hands-free operation and water conservation.



Figure 5: Illustration of the automatic dual flush system, differentiating between large and small flushes based on seat occupancy time.

### Heated Seat, Warm Water, and Warm Dryer

Enjoy an optimized experience with an adjustable heated seat, warm water for washing, and a warm air dryer with three adjustable temperature settings (93.2°F to 104°F).



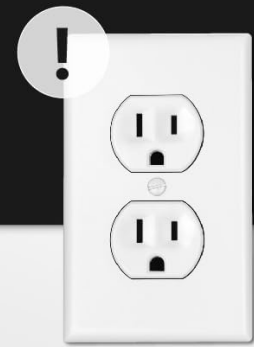
Figure 6: Visual representation of the heated seat, warm air dryer, and automatic deodorization functions.

### 3-in-1 Stainless Steel Nozzle

The self-cleaning stainless steel nozzle offers Posterior, Feminine, and Turbo Wash functions. The nozzle automatically cleans itself before and after each use.

# GETTING READY TO INSTALL

Please check if the product is within the dimesions below.



**OUTLET  
REQUIRED**

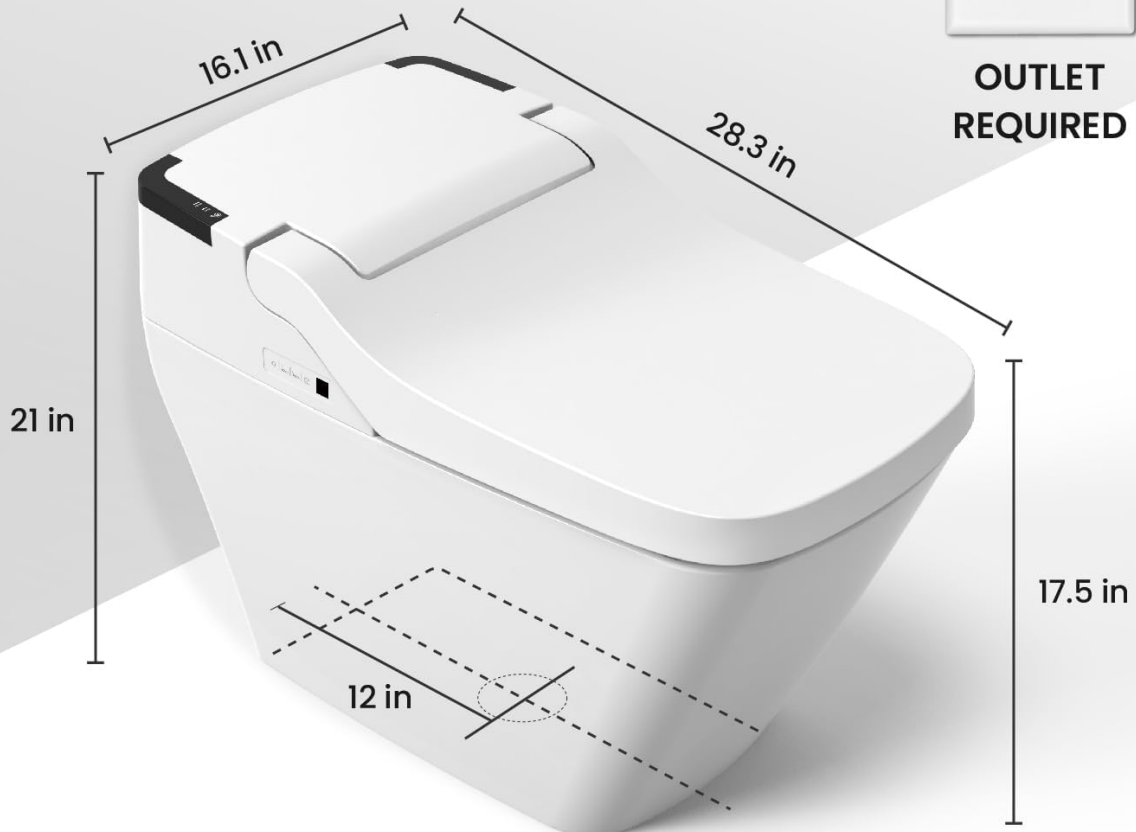


Figure 7: Detailed view of the multi-function stainless steel nozzle and its self-cleaning capability.

## Wireless Remote Controller

All functions, including wash modes, water pressure, seat temperature, and dryer settings, are controlled via the wireless remote.



# SOFT CLOSE

No Slam !

Seat and Seat cover with  
soft close function for safety



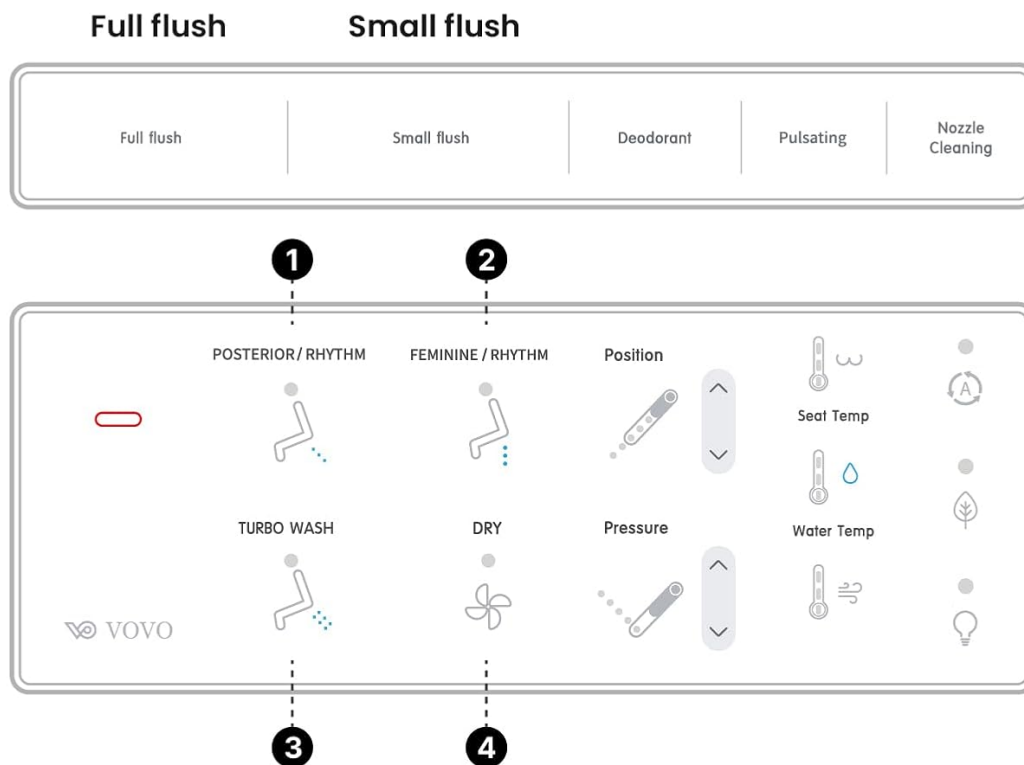
Figure 8: Layout of the wireless remote control for the TCB-090S, showing buttons for Posterior, Feminine, Turbo Wash, Dry, Position, Seat Temp, Water Temp, and Pressure adjustments.

- **Posterior Wash:** Press the "Posterior" button for rear cleansing.
- **Feminine Wash:** Press the "Feminine" button for front cleansing.
- **Turbo Wash:** Activates a stronger wash function. Water pressure can be adjusted during operation.
- **Dryer:** Use the "Dry" function after washing.
- **Adjustments:** Use the arrow buttons to adjust water pressure, nozzle position, seat temperature, and water temperature.
- **Auto Deodorization:** The system automatically activates to remove odors.

## Soft Close Lid and LED Night Light

The seat and lid feature a soft-close mechanism to prevent slamming. An integrated LED night light illuminates the bowl for convenience in low light conditions.

# REMOTE CONTROLLER



## 1 Posterior

Press the Feminine button to operate.

## 2 Feminine

Press the Feminine button to operate.

## 3 TURBO WASH Technology

Water pressure can be adjusted while the function is under operation.

## 4 Dryer

Use the dry function after using the posterior.

Figure 9: The soft-close function prevents the seat and lid from slamming.

## MAINTENANCE

Regular cleaning and maintenance ensure optimal performance and longevity of your smart bidet toilet.

- **Nozzle Cleaning:** The stainless steel nozzle performs an automatic self-cleaning cycle. For additional cleaning, use the "Nozzle Cleaning" button on the remote.
- **Exterior Cleaning:** Wipe the exterior surfaces with a soft, damp cloth and a mild, non-abrasive cleaner. Do not use harsh chemicals, abrasive pads, or strong detergents, as these can damage the finish.
- **Seat Cleaning:** The polypropylene seat can be cleaned with a mild soap solution. Avoid prolonged exposure to strong cleaning agents.
- **Power Disconnection:** Always unplug the unit from the electrical outlet before performing any deep cleaning or maintenance.

## TROUBLESHOOTING

If you encounter issues, refer to the following common problems and solutions.



Problem	Possible Cause	Solution
No power / Unit not turning on	Power cord not plugged in; circuit breaker tripped; power outage.	Ensure the power cord is securely plugged into a live outlet. Check the circuit breaker.
No water spray / Weak spray	Water supply valve closed; clogged nozzle; low water pressure.	Open the water supply valve fully. Perform a nozzle cleaning cycle. Check household water pressure.
Heated seat not warming	Heated seat function off; temperature setting too low.	Activate the heated seat function via the remote. Increase the seat temperature setting.
Remote control not responding	Dead batteries; remote out of range; interference.	Replace remote batteries. Ensure remote is used within close proximity to the toilet. Remove any obstructions.
Toilet not flushing automatically	Seat sensor malfunction; power issue.	Ensure the unit has power. If the issue persists, contact customer support.

For issues not listed here, or if troubleshooting steps do not resolve the problem, please contact VOVO customer support.

## SPECIFICATIONS

Feature	Detail
Model Number	TCB-090S
Brand	VOVO
Product Dimensions (D x W x H)	28.3" x 16.1" x 21"
Item Weight	110 Pounds
Color	White
Material	Stainless Steel (nozzle), Polypropylene (seat)
Installation Type	Floor Mounted
Voltage	120 Volts
Flush Volume	1.12 GPF (Gallons Per Flush) at 35 PSI
Certifications	cUPC, cETLus certified
Included Components	Installation Kit
UPC	850016152374

## WARRANTY AND SUPPORT


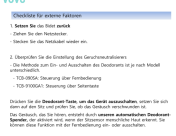




For warranty information, product support, or to purchase protection plans, please contact VOVO USA directly.

- **Seller:** VOVO USA
- **Protection Plans:** Optional 3-Year and 4-Year protection plans are available.
- **Returns:** This product is eligible for 30-day easy returns.

Refer to your purchase documentation or the VOVO official website for the most current contact information and detailed warranty terms.

© 2025 VOVO. All rights reserved.

## Related Documents - TCB-090S

 <p><b>VOVO</b></p> <p><b>External Factor Checklist</b></p> <ol style="list-style-type: none"> <li>1. Please check if the POWER LED is turned on.</li> <li>2. Please check the cable.       <ol style="list-style-type: none"> <li>a. Is the cable plugged in correctly?</li> <li>b. Plug the cable back in.</li> </ol> </li> <li>3. Check the external power and please check if the external power is on. If the power is on, please check the power switch on the power supply.</li> <li>4. Push the power button on the side of the unit to reset the unit. (Refer to the usage manual.)</li> </ol>	<p><a href="#">VOVO External Factor Checklist for Power Issues</a></p> <p>Troubleshooting guide for VOVO smart bidet toilets, covering common power-on issues, LED indicators, and reset procedures.</p>
 <p><b>VOVO</b></p> <p><b>Smart Bidet Toilettensitz Fehlerbehebung: Externe Faktoren und Geruchsneutralisierer</b></p> <ol style="list-style-type: none"> <li>1. Schalten Sie das Gerät aus.</li> <li>2. Überprüfen Sie die Stromversorgung.</li> <li>3. Überprüfen Sie die Geruchsneutralisierung.</li> </ol>	<p><a href="#">VOVO Smart Bidet Toilettensitz Fehlerbehebung: Externe Faktoren und Geruchsneutralisierer</a></p> <p>Ein prägnanter Leitfaden zur Fehlerbehebung bei gängigen Problemen mit VOVO Smart Bidet Toilettensitzen, der sich auf externe Faktoren, Strom-Neustarts und Geruchsneutralisierer-Einstellungen für Modelle wie TCB-090SA und TCB-9100GA konzentriert.</p>
 <p><b>VOVO</b></p> <p><b>Bidet External Factors Checklist for Power and Reset Issues</b></p> <ol style="list-style-type: none"> <li>1. Verify if the POWER LED is on.</li> <li>2. Check the cable.       <ol style="list-style-type: none"> <li>a. Is the cable plugged in correctly?</li> <li>b. Plug the cable back in.</li> </ol> </li> <li>3. Check the external power and please check if the external power is on. If the power is on, please check the power switch on the power supply.</li> <li>4. Push the power button on the side of the unit to reset the unit. (Refer to the usage manual.)</li> </ol>	<p><a href="#">VOVO Bidet External Factors Checklist for Power and Reset Issues</a></p> <p>A comprehensive checklist from VOVO to verify external factors and troubleshoot power or reset issues for VOVO bidet models including TCB 090SA, TCB 090S, TCB 8100B, TCB 8100W, TCB 8100N, PB-707S, and PB-101S.</p>
 <p><b>VOVO</b></p> <p><b>Digital Bidet Internal Maintenance Guide: TCB-090S/TCB-090SA</b></p> <p>This manual is for the internal maintenance of the following models: TCB-090S, TCB-090SA. It provides detailed instructions for opening the unit, disconnecting external connections, replacing the membrane, replacing the flush system, assembling the automatic damper module, and reassembling the unit. Includes step-by-step procedures and important notes.</p>	<p><a href="#">VOVO Digital Bidet Internal Maintenance Guide: TCB-090S/TCB-090SA</a></p> <p>Comprehensive internal maintenance guide for VOVO Digital Bidet models TCB-090S and TCB-090SA. This document provides detailed instructions for opening the unit, disconnecting external connections, replacing the membrane, replacing the flush system, assembling the automatic damper module, and reassembling the unit. Includes step-by-step procedures and important notes.</p>
 <p><b>VOVO</b></p> <p><b>Bidet Troubleshooting: External Factor Checklist for Noise Issues</b></p> <ol style="list-style-type: none"> <li>1. Turn off the bidet.</li> <li>2. Check the deodorizer setting.</li> <li>3. Check the deodorizer fan.</li> </ol>	<p><a href="#">VOVO Bidet Troubleshooting: External Factor Checklist for Noise Issues</a></p> <p>A comprehensive guide for troubleshooting noise issues with VOVO smart bidet toilets. This checklist covers power reset procedures and detailed instructions for checking and controlling the deodorizer function across various VOVO models, including TCB-090SA, TCB-9100GA1, TCB-090SA/WA, TCB-090S/W, TCB-9100G/W, and TCB-9100GA/WA.</p>
 <p><b>VOVO</b></p> <p><b>TCB-090S/TCB-090SA Bidet Toilet Interne Service-Checkliste</b></p> <p>This manual is for the internal maintenance of the following models: TCB-090S, TCB-090SA. It provides detailed instructions for opening the unit, disconnecting external connections, replacing the membrane, replacing the flush system, assembling the automatic damper module, and reassembling the unit. Includes step-by-step procedures and important notes.</p>	<p><a href="#">VOVO TCB-090S/TCB-090SA Bidet Toilet Interne Service-Checkliste</a></p> <p>Detaillierte interne Checkliste für VOVO TCB-090S und TCB-090SA Bidet-Toiletten, die Verfahren wie das Entfernen von Fremdkörpern, den Austausch von Teflon-Unterlegscheiben und die Demontage/Montage von Komponenten abdeckt.</p>