

**Manuals+**

[Q & A](#) | [Deep Search](#) | [Upload](#)

[manuals.plus](#) /

- › [Suncast](#) /
- › [Suncast 6' x 5' Modernist Storage Shed Instruction Manual](#)

**Suncast BMS6582D**

# Suncast 6' x 5' Modernist Storage Shed Instruction Manual

MODEL: BMS6582D



Front view of the Suncoast 6' x 5' Modernist Storage Shed, showcasing its design and double doors.

## Introduction

---

This manual provides detailed instructions for the assembly, operation, and maintenance of your Suncoast 6' x 5' Modernist Storage Shed. Designed for outdoor use, this shed offers 200 cubic feet of storage space, ideal for lawn equipment, gardening tools, and other outdoor items. Its robust construction ensures durability and protection against various weather conditions.

### Key Features:

- **Spacious Storage:** 200 cu. ft. capacity for various outdoor items.
- **Easy Access:** Sturdy double doors for convenient entry and exit.
- **Enhanced Security:** Pad-lockable doors (padlock not included) for securing valuables.
- **Durable Construction:** Multi-wall resin panels provide superior strength, water resistance, and UV protection.

- **Snow Load Capacity:** Roof supports up to 40 lbs./ft<sup>2</sup> with a full skeleton steel frame.
- **Natural Lighting & Ventilation:** Four large transom windows and functional air vents.

## Setup Instructions

---

Proper assembly is crucial for the stability and longevity of your storage shed. Please read all instructions carefully before beginning.

### 1. Site Preparation:

Ensure the chosen location for your shed is a flat, level surface. An uneven base can lead to assembly difficulties and affect the shed's structural integrity and door alignment.

### 2. Tools Required:

Assembly requires minimal tools. Refer to the included assembly guide for a complete list of necessary equipment.

### 3. Assembly Steps:

Follow the step-by-step instructions provided in the separate assembly manual included with your product. It is recommended to have at least two people for assembly.

# Easy Assembly

QUICK, SIMPLE, AND STRESS-FREE BUILD

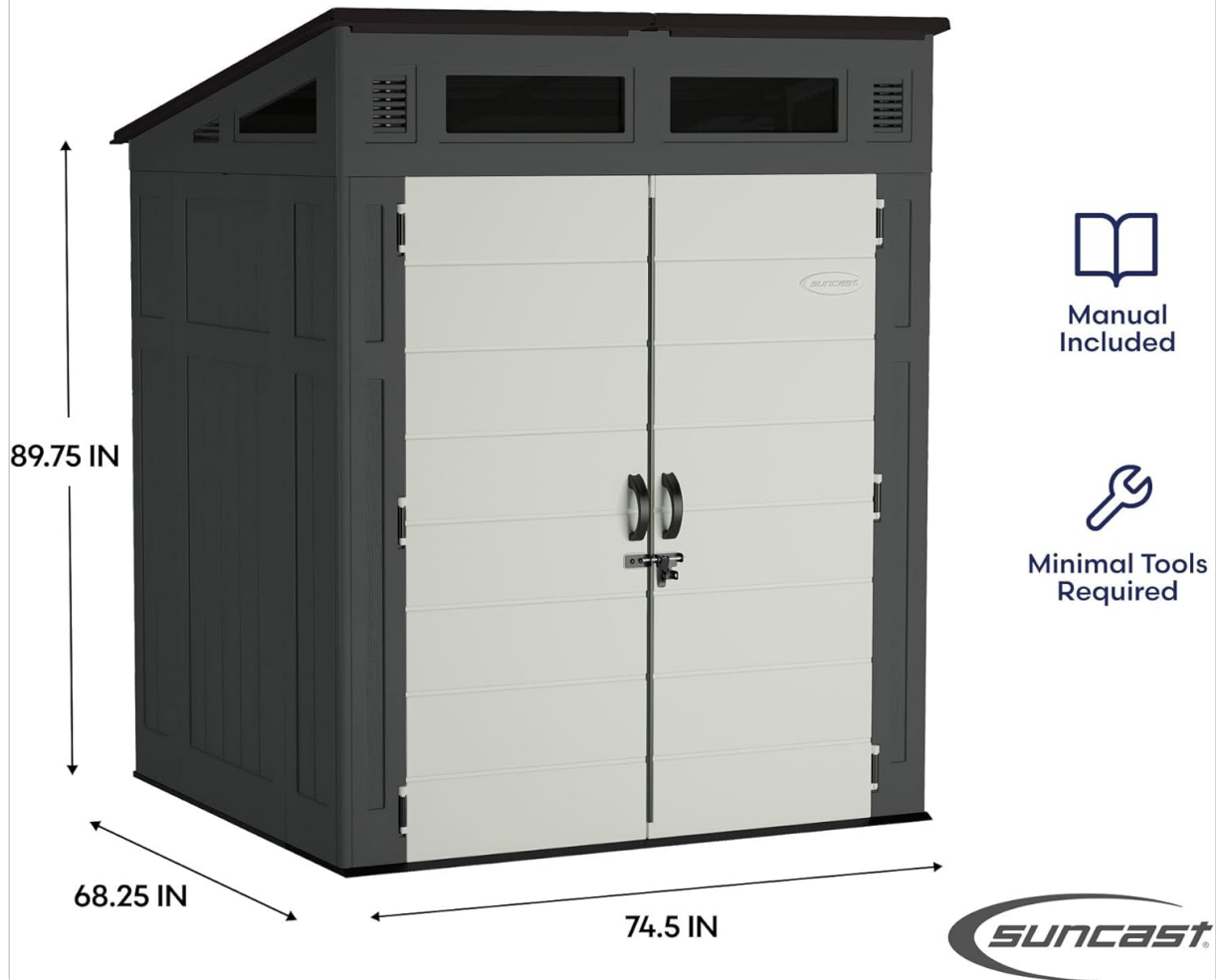


Diagram illustrating the dimensions and ease of assembly for the SunCast Modernist Storage Shed.

## Important Safety Information:

**Proper assembly is required. Do not exceed the weight limits for doors. Be careful when handling heavy components.**

## Operating Instructions

---

### 1. Door Usage:

The shed features sturdy double doors for easy access. To open, unlatch the metal slide latch and pull the resin handles. Ensure doors are fully closed and latched when not in use to protect contents from weather and unauthorized access.

### 2. Security:

The doors are designed to be pad-lockable. For added security, attach a padlock (not included) to the designated area on the metal slide latch.

# Secure Lockable Doors

PREVENT THEFT AND UNAUTHORIZED USE



RESIN HANDLE

METAL SLIDE LATCH

PADLOCK READY

\*LOCK NOT INCLUDED



Close-up view of the shed's secure lockable doors, highlighting the resin handle, metal slide latch, and padlock-ready design.

### 3. Ventilation and Lighting:

The four large transom windows allow natural light into the interior, making it easier to locate items. Functional air vents ensure proper air circulation within the shed, reducing moisture buildup.

### 4. Storage Capacity:

The shed provides 200 cubic feet of storage. Distribute weight evenly and avoid placing excessively heavy items against the walls or doors.

## Maintenance

Regular maintenance will help preserve the appearance and functionality of your Suncast storage shed.

### 1. Cleaning:

The multi-wall resin panels are low-maintenance and easy to clean. Use mild soap and water with a soft cloth or brush to clean the exterior and interior surfaces. Avoid abrasive cleaners or harsh chemicals that could damage the resin.

## 2. Inspection:

Periodically inspect the shed for any signs of wear, damage, or loose components. Ensure all panels are securely fastened and doors operate smoothly. Check the roof for any debris buildup, especially after heavy snowfall.



Visual representation of the shed's all-weather construction, highlighting water resistance and UV protection, along with functional vents and transom windows.

## 3. Weather Protection:

The all-weather construction provides water resistance and UV protection. While designed to withstand elements, ensuring proper drainage around the shed base can further enhance its longevity.

## Troubleshooting

### 1. Doors Not Closing Properly:

Ensure the shed is assembled on a completely flat and level surface. An uneven base can cause door misalignment. Check for any obstructions in the door tracks or hinges.

### 2. Water Inside the Shed:



Verify that all panels are correctly installed and sealed according to the assembly instructions. Check for any cracks or damage to the panels or roof. Ensure proper drainage around the shed to prevent water pooling at the base.

3. Difficulty During Assembly:

If you encounter difficulties during assembly, re-read the specific steps in the assembly manual. Ensure all parts are correctly oriented and aligned before attempting to fasten them. Do not force components together; if parts do not fit, double-check the instructions and part numbers.

4. Missing or Damaged Parts:

If any parts are missing or damaged upon unpacking, do not proceed with assembly. Contact Suncast customer support immediately for assistance.

Specifications

Feature	Detail
Brand	Suncast
Model Number	BMS6582D
Product Dimensions	68.25"D x 74.5"W x 89.75"H
Item Weight	295.5 Pounds
Material	Resin
Color	Gray
Base Material	Resin
Top Material Type	Plastic
Frame Material	Resin
Water Resistance Level	Water Resistant
Door Style	Double Doors
Assembly Required	Yes
Manufacturer	Suncast Corporation
UPC	044365028149

Compatible Accessories

Enhance the functionality of your Suncast Modernist Storage Shed with compatible accessories. Please note that accessories are sold separately.



## Modernist® 6 ft. x 5 ft. Storage Shed

### Shed Accessory Compatibility



#### SHELVES



BMSASHELFK1



V7572PK

#### BASKET



BMSBSBKT2PK

#### HOOKS



V742PK



V724BLD

Image displaying various compatible accessories such as shelves, hooks, and baskets for the Suncast 6 ft. x 5 ft. Modernist Storage Shed.

#### Available Accessories:

- **Shelves:** BMSASHELFK1, V7572PK
- **Hooks:** V742PK, V724BLD
- **Basket:** BMSBSBKT2PK

#### Warranty Information

For detailed warranty information regarding your Suncast 6' x 5' Modernist Storage Shed, please refer to the official documentation included with your product or visit the [Suncast official website](#).

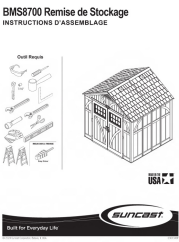
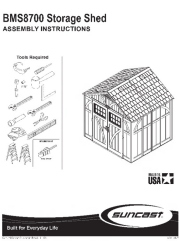
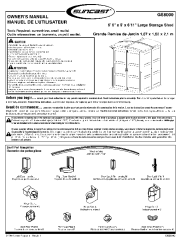
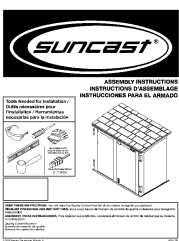
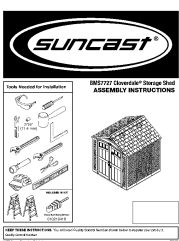
#### Customer Support


If you have any questions, require assistance with assembly, or need to report missing/damaged parts, please contact Suncast customer support. You can find contact information on the official Suncast website or within the product packaging.

Visit the [Suncast Store on Amazon](#) for more products and information.



## Related Documents - BMS6582D

	<p><a href="#">Suncast BMS8700 Storage Shed Assembly Instructions</a></p> <p>Comprehensive assembly instructions for the Suncast BMS8700 storage shed. This guide covers required tools, site preparation, parts identification, and detailed step-by-step assembly procedures for building your Suncast shed.</p>
	<p><a href="#">Suncast BMS8700 Storage Shed Assembly Instructions</a></p> <p>Comprehensive assembly instructions for the Suncast BMS8700 Storage Shed, covering site preparation, parts identification, and step-by-step building guidance. Includes essential tips for care, maintenance, and safety.</p>
	<p><a href="#">Suncast GS8000 Large Storage Shed Owner's Manual and Assembly Guide</a></p> <p>Comprehensive owner's manual and assembly instructions for the Suncast GS8000 Large Storage Shed. Includes parts list, step-by-step assembly guidance, safety precautions, care instructions, and warranty information.</p>
	<p><a href="#">Suncast 4x3 Horizontal Shed Assembly Instructions</a></p> <p>Detailed assembly instructions for the Suncast 4x3 Horizontal Shed Kit (BMS2500SB), covering site preparation, parts identification, hardware, assembly steps, and warranty information.</p>
	<p><a href="#">Suncast BMS7727 Cloverdale Storage Shed Assembly Instructions</a></p> <p>Comprehensive assembly guide for the Suncast BMS7727 Cloverdale Storage Shed, covering site preparation, parts identification, and detailed step-by-step construction instructions.</p>



**BMS8100 / BMS8125 Storage Shed**  
ASSEMBLY INSTRUCTIONS

Tools Required

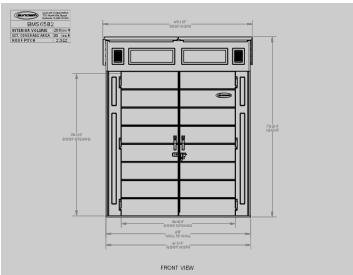
Start for Everyday Life

**SUNCAST**

[Suncast BMS8100/BMS8125 Storage Shed Assembly Instructions](#)

Step-by-step assembly instructions for the Suncast BMS8100 and BMS8125 storage sheds, including detailed guidance on site preparation, parts identification, and construction.

Documents - Suncast – BMS6582D



[\[pdf\]](#) Specifications Dimension Guide

BMS6582 Overall Dimensions CORP pgaryc DDXLXGB2 bms6582d specs webrestaurantstore documents  
specsheets |||

Suncast Corporation 701 North Kirk Road Batavia, IL 60510 USA BMS6582  
INTERIOR VOLUME 200 cu ft EXT. COVERAGE AREA 30 sq ft ROOF PITCH 2.3:12  
6 2-1/2 ROOF WIDTH 70-1/2 DOOR OPENING 7 5-3/4 HEIGHT 56-3/4 DOOR  
OPENING 6 0 WALL TO WALL 6 -1/4 FLOOR WIDTH FRONT VIEW Suncast  
Corporation ...

lang:i-klngon score:21 filesize: 1.12 M page\_count: 4 document date: 2021-10-04