

Tonton D5309HN8-B

Tonton 4K Wireless Security Camera System User Manual

Brand: **Tonton** | Model: **D5309HN8-B**

1. INTRODUCTION

This manual provides comprehensive instructions for the installation, operation, and maintenance of your Tonton 4K Wireless Security Camera System, Model D5309HN8-B. Please read this manual thoroughly before using the product to ensure proper setup and functionality. Keep this manual for future reference.

2. KEY FEATURES

- **High-Resolution Surveillance:** 3MP (2304*1296) cameras provide clear video, approximately 1.5 times clearer than 1080P systems.
- **Dual WiFi NVR:** The 10-channel NVR features dual WiFi for enhanced signal stability and direct wireless connection to your home network.
- **Advanced Motion Detection:** Equipped with PIR, motion, and AI humanoid detection sensors to minimize false alarms from environmental factors.
- **Color Night Vision:** Integrated spotlights enable full-color video recording at night, alongside traditional infrared night vision up to 100ft.
- **Two-Way Audio:** Built-in microphone and speaker allow for real-time communication through the cameras.
- **Weatherproof Design:** IP66-rated metal housing ensures durability and reliable operation in various weather conditions (from -14°F to 140°F).
- **H.265+ Video Compression:** Efficient compression technology saves hard drive space by up to 50% and provides smoother video playback.
- **Expandable Storage:** Includes a pre-installed 1TB HDD, expandable up to 6TB.
- **Remote Access:** View live feeds and recordings from anywhere using the EseeCloud app on smartphones, tablets, or PC software.
- **Smart Home Integration:** Compatible with Amazon Alexa for voice control and viewing on smart displays.

3. WHAT'S IN THE BOX

Please check the contents of your package against the list below:

- 1 x 5MP 10CH NVR with 1TB HDD
- 8 x 3MP Cameras
- 1 x 12V 2A Power Supply for NVR
- 8 x 12V 1A 3M Long Power Supply for Cameras
- 1 x USB Mouse
- 1 x Network Cable
- 1 x HDMI Cable
- 1 x Wall Sticker
- 1 x User Manual (Quick Start Guide)
- 8 x Pack of Screws

What's in the Box

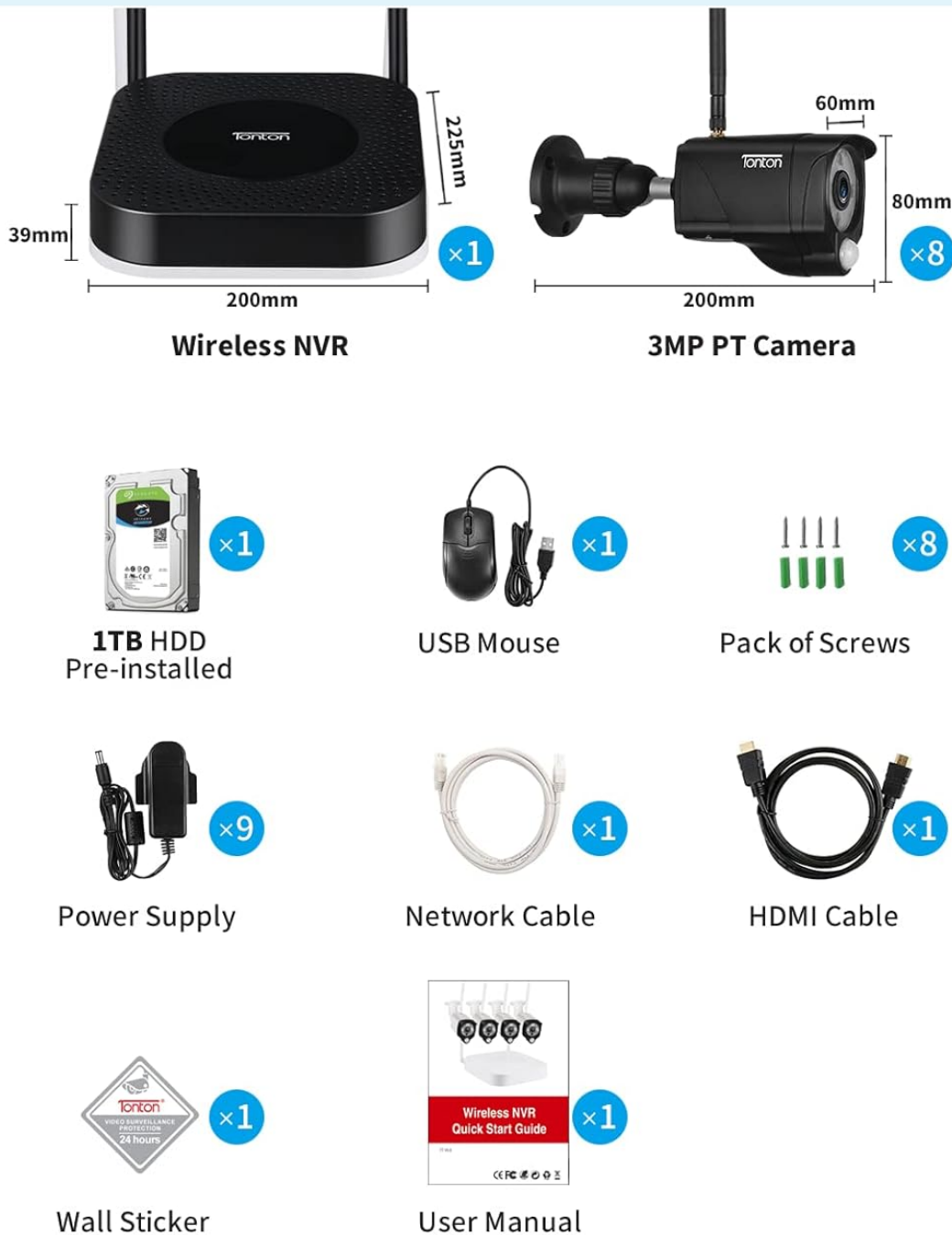


Image: A visual representation of all components included in the Tonton 4K Wireless Security Camera System package, including the NVR, cameras, power adapters, cables, mouse, and mounting hardware.

4. SETUP INSTRUCTIONS

4.1 Initial Power-Up and Connection

1. **Connect NVR:** Connect the NVR to a power source using its dedicated 12V 2A power adapter. Connect the NVR to a monitor (not included) via the HDMI cable and attach the USB mouse.
2. **Connect Cameras:** Connect each camera to its individual 12V 1A power adapter. Ensure the cameras

are within range of the NVR's WiFi signal for initial setup.

3. **Auto-Pairing:** The cameras and NVR are designed for plug-and-play auto-pairing. Once powered, they should automatically connect.

Auto Pair, Plug-and-Play WiFi

No need for complex configurations



Image: A Tonton security camera connected to a power outlet and the NVR unit, illustrating the wireless connection setup. This shows the simplicity of the auto-pairing feature.

4.2 Camera Placement

- **Power Source:** Each camera requires a continuous power supply. The included 3-meter power cables provide flexibility.

- **Signal Strength:** Before permanent installation, test the camera's WiFi signal strength at the desired location. Cameras can act as repeaters to extend the NVR's WiFi network.
- **Mounting:** Use the 360° adjustable bracket for flexible positioning. Ensure the camera's antenna faces upwards for optimal signal.
- **Weather Protection:** The cameras feature IP66 waterproof metal housing, suitable for both indoor and outdoor use in various weather conditions.



Image: A Tonton security camera mounted on an exterior wall, shown with water droplets, demonstrating its IP66 weatherproof rating and suitability for outdoor installation.

4.3 Network Connection for Remote Access

For remote viewing, connect the NVR to your home network:

- **Wireless Connection:** The NVR has a built-in network card, allowing it to connect directly to your WiFi router.
- **Wired Connection:** Alternatively, connect the NVR to your router using an Ethernet cable.



Image: A diagram showing the Tonton NVR wirelessly connected to a home router, enabling remote access to the camera system.

4.4 Mobile App Setup (EseeCloud)

1. **Download App:** Download the 'EseeCloud' app from your device's app store (available on App Store and Google Play).
2. **Register Account:** Complete the registration process within the app.
3. **Add Device:** Scan the QR code on your NVR or manually add the device ID to link your system to the app.

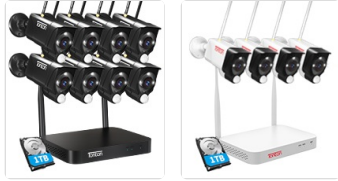


Image: The EseeCloud app icon and a screenshot of the app interface, demonstrating where to add devices after installation.

4.5 Amazon Alexa Integration

1. **Download Alexa App:** Ensure you have the Amazon Alexa app installed and are logged into your Amazon account.
2. **Enable Skill:** In the Alexa app, navigate to 'Skills & Games', search for 'EseeCloud', and enable the skill.
3. **Link Account:** Follow the prompts to link your EseeCloud account with Alexa by entering your EseeCloud username and password.
4. **Discover Devices:** Alexa will then discover your cameras. You can now use voice commands like "Alexa, show the living room" to view camera feeds on compatible Alexa devices.

Work With Alexa

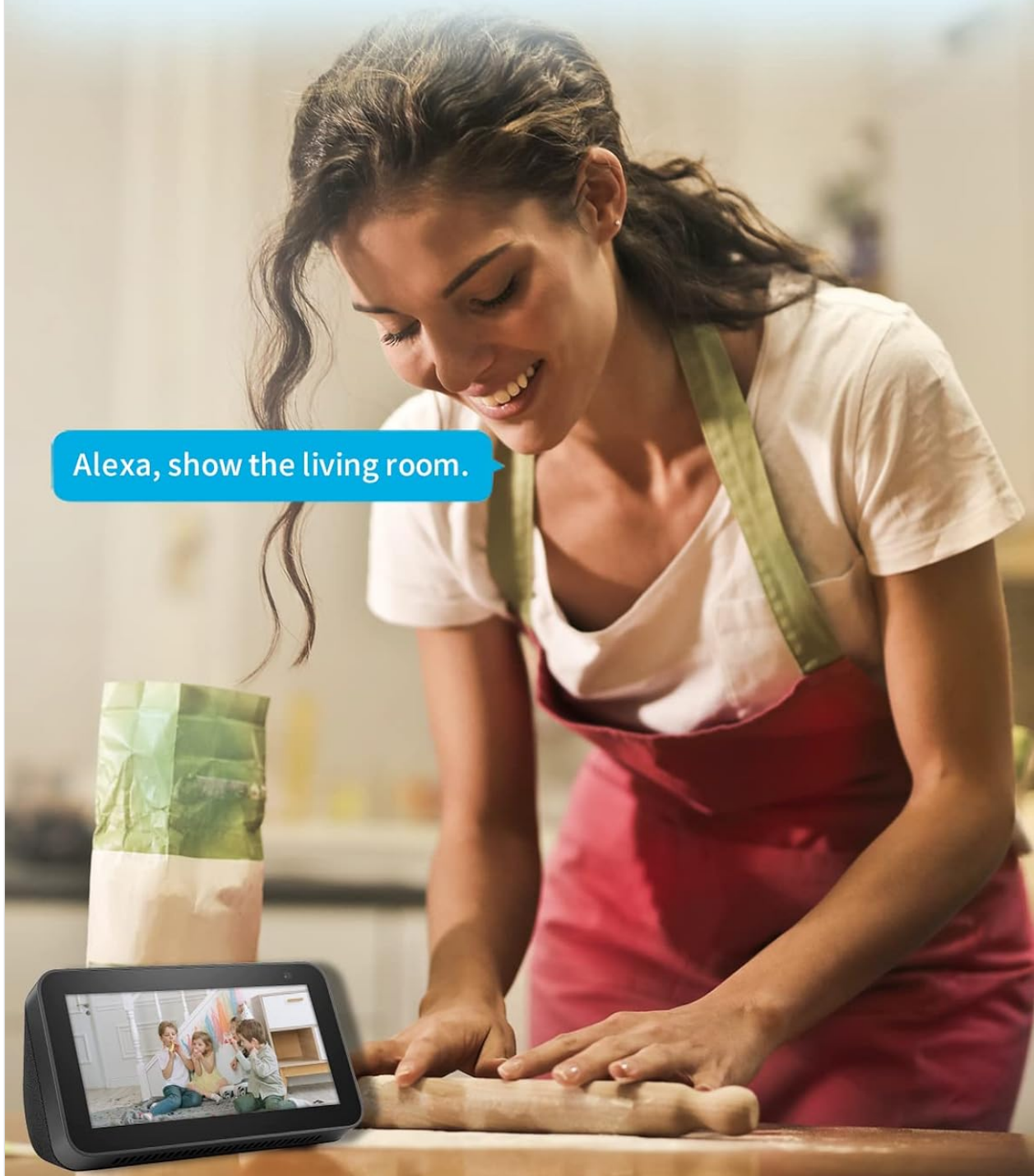


Image: A woman using an Amazon Alexa-enabled smart display to view a live feed from her Tonton security camera, demonstrating the voice control feature.

Setup Video: How the Wireless Camera System Works

Video: This video demonstrates the basic setup and functionality of the Tonton wireless camera system, including how cameras connect to the NVR and the overall system operation.

Setup Video: How to Work with Amazon Alexa

Video: This video provides a step-by-step guide on integrating your Tonton security camera system with Amazon Alexa,

5. OPERATING INSTRUCTIONS

5.1 Live Viewing and Recording

- **Local Viewing:** Connect the NVR to a monitor for continuous live viewing of all camera feeds.
- **Remote Viewing:** Use the EseeCloud app on your smartphone or PC software ('ismkit' for Windows/Mac, contact sales@tontonsecurity.com for software) to access live feeds and recordings remotely.
- **24/7 Recording:** The system supports continuous recording to the 1TB HDD. When the HDD is full, older footage will be automatically overwritten.
- **Event Recording:** Configure the system to record only when motion or PIR detection is triggered to save storage space.

Support 24/7 Recording

Wi-Fi Connection, No Cables Needed

Note: Camera not Battery



Built in 3.5"
1TB



Up to 3.5"
6TB

Image: A monitor displaying a multi-camera live view from the Tonton system, highlighting the 24/7 recording capability with a 1TB hard drive.

5.2 Motion Detection and Alerts

- **Smart Detection:** The system uses PIR, motion, and AI humanoid detection to accurately identify human activity and reduce false alarms.
- **Alerts:** Receive mobile notifications and email alerts when motion is detected. The NVR can also sound a buzzer, and cameras can activate a siren.
- **Customization:** Define specific motion detection areas and adjust sensitivity levels for each camera to suit your environment.

AI Human Intelligent Detection



App Push



Email Warning



Image: An illustration of the AI Human Intelligent Detection feature, showing how the system identifies a person and sends app push notifications and email warnings.

5.3 Night Vision Modes

- **Full Color Mode:** Built-in spotlights illuminate the area, allowing cameras to record in full color even in low-light conditions.
- **Infrared Mode:** Traditional black and white night vision using infrared LEDs, effective up to 100ft.
- **Smart Mode:** (Default) The camera intelligently switches between infrared and color night vision based on detected activity.

Enhanced Color Night Vision



2KHD

Image: A night scene showcasing the enhanced color night vision capability of the Tonton cameras, with spotlights and IR LEDs providing clear visibility.

5.4 Two-Way Audio

The cameras support two-way audio, allowing you to listen and speak through the camera using the EseeCloud app. This feature is ideal for communicating with visitors or deterring intruders.

2-Way Conversation in Real Time

See, Hear, and talk as if you were there



Image: A visual representation of the two-way audio feature, showing a user communicating with a delivery person via the camera and mobile app.

6. MAINTENANCE

- **Camera Cleaning:** Regularly clean the camera lenses with a soft, damp cloth to ensure clear image quality. Avoid abrasive cleaners.
- **Connection Check:** Periodically inspect all power and network connections for security and integrity.
- **Hard Drive Management:** The 1TB HDD will automatically overwrite the oldest footage when full. For longer recording periods, consider upgrading the HDD (up to 6TB) or utilizing motion+PIR detection

mode.

- **Software Updates:** Check the EseeCloud app or Tonton website for any available firmware updates for your NVR and cameras to ensure optimal performance and security.

7. TROUBLESHOOTING

- **No Camera Signal:**
 - Ensure the camera is powered on.
 - Check the distance between the camera and NVR; reduce obstacles if possible.
 - Verify the camera is properly paired with the NVR.
- **Frequent False Alarms:**
 - Adjust the motion detection sensitivity in the NVR settings or app.
 - Define specific detection zones to exclude areas with frequent non-human movement (e.g., trees, busy roads).
 - Ensure PIR detection is enabled for human-specific alerts.
- **Poor Night Vision:**
 - Clean the camera lens to remove dirt or smudges.
 - Ensure no obstructions are blocking the IR LEDs or spotlights.
 - Check if the camera is set to the desired night vision mode (Full Color, Infrared, or Smart).
- **Remote Access Issues:**
 - Verify the NVR is connected to the internet (WiFi or Ethernet).
 - Ensure your smartphone or PC has a stable internet connection.
 - Confirm the EseeCloud app is updated to the latest version and the device is correctly added.
- **NVR Not Recording:**
 - Check if the 1TB HDD is properly installed and recognized by the NVR.
 - Verify recording schedules and motion detection settings.
 - Ensure the HDD is not full (though it should auto-overwrite, check for errors).

8. SPECIFICATIONS

Feature	Specification
Brand	Tonton
Model Number	D5309HN8-B
Connectivity Technology	Wireless
Video Capture Resolution	2K, 3MP (2304*1296)

Feature	Specification
Number of Channels	10
Memory Storage Capacity	1 TB (expandable up to 6TB)
Power Source	Corded Electric
Item Dimensions (L x W x H)	13.58 x 16.26 x 7.48 inches
Recommended Uses	Home Security
Compatible Devices	Cameras, Personal Computers, Smartphones, TV, Tablets
Other Camera Features	PIR Sensor, Spotlight, 2 Way Audio, Metal Housing, 110 degree Viewing Angle, IP66, Color Night Vision, 360 degree adjustable bracket, works with Alexa
Low Light Technology	Night color
Focal Length	F=3.6mm
Night Vision Range	100 Feet
Frame Rate	15fps
Recording Mode	Event, Schedule
Total USB Ports	2
Hardware Interface	DisplayPort
Video Input	Wireless Signal Transmission
Viewing Angle	110 Degrees

9. WARRANTY AND SUPPORT

For any questions or technical assistance, please contact Tonton support via email at sales@tontonsecurity.com.

For additional resources and support, you may also visit the Tonton brand store on Amazon: [Tonton Store](#).



Image: A QR code provided for quick access to Tonton support resources.