

Manuals+

[Q & A](#) | [Deep Search](#) | [Upload](#)

manuals.plus /

› [LEVOIT](#) /

› [LEVOIT Core 300 Air Purifier User Manual](#)

LEVOIT Core 300

LEVOIT Core 300 Air Purifier User Manual

Model: Core 300

INTRODUCTION

The LEVOIT Core 300 Air Purifier is designed to improve indoor air quality by effectively removing allergens, dust, pet dander, smoke, and odors from your environment. Featuring a 360-degree air intake and a 3-in-1 filtration system, it provides comprehensive air purification for various spaces, including bedrooms, living rooms, and offices. This manual provides essential information for setting up, operating, maintaining, and troubleshooting your air purifier.



Image: The LEVOIT Core 300 Air Purifier in white, shown alongside its replacement filter and packaging. The purifier has a cylindrical design with a perforated lower section for air intake and a top-mounted control panel and air outlet.

SETUP

Before using your LEVOIT Core 300 Air Purifier, ensure proper setup to maximize its performance and longevity.

1. **Unpacking:** Carefully remove the air purifier and all accessories from the packaging.
2. **Filter Installation:**
 - Turn the air purifier upside down.
 - Twist the filter cover counter-clockwise to unlock and remove it.
 - Remove the plastic packaging from the 3-in-1 True HEPA filter. *It is crucial to remove this packaging before use.*
 - Place the filter back into the air purifier.
 - Replace the filter cover and twist clockwise to lock it securely.
3. **Placement:** Place the air purifier on a flat, stable surface, ensuring at least 15 inches (38 cm) of clearance on all sides for optimal air circulation.
4. **Power Connection:** Plug the power cord into a standard electrical outlet.

Breathe Better — Improves Indoor Air Quality

The 3-stage filtration system provides continuous air purification, trapping fine particles and adsorbing common household smells.



Note: The Original Filter comes preinstalled.
Additional custom filters must be purchased separately.

Image: A LEVOIT Core 300 Air Purifier placed on a bedside table, demonstrating its compact size and how it integrates into a living space to improve indoor air quality. An original filter is shown in the foreground.

OPERATING INSTRUCTIONS

Your LEVOIT Core 300 Air Purifier features intuitive controls for easy operation.

- **Power On/Off:** Press the **Power Button** (🔌) to turn the unit on or off.
- **Fan Speed Adjustment:** Press the **Fan Speed Button** (🌀) repeatedly to cycle through fan speeds: Low, Medium, High, and Sleep Mode.
 - *Sleep Mode:* Operates at a quiet 24dB for undisturbed rest.
- **Timer Function:** Press the **Timer Button** (🕒) to set the purifier to automatically turn off after 2, 4, or 8 hours.
- **Display Off:** Press the **Display Off Button** (📺) to turn off the display lights for a darker environment, especially useful during sleep.
- **Filter Reset Indicator:** The filter indicator light will illuminate when it's time to check or replace the filter. After replacing

the filter, press and hold the Filter Reset Button for 3 seconds to reset the indicator.

Breathe Easy — Reduces Disturbances



Sleep Mode



Display Off



Timer



Image: A LEVOIT Core 300 Air Purifier operating in a bedroom at night, highlighting its quiet Sleep Mode, Display Off feature, and Timer function for reduced disturbances. The control panel lights are visible.

MAINTENANCE

Regular maintenance ensures your air purifier continues to perform efficiently.

Filter Replacement

The LEVOIT Core 300 uses an exclusive 3-in-1 filter (Core 300-RF) that includes an ultra-fine pre-filter, an activated carbon filter, and a True HEPA filter. The filter should be replaced every 6-8 months, or when the filter indicator light illuminates.

1. Unplug the air purifier from the power outlet.
2. Turn the unit upside down and remove the filter cover.

3. Remove the old filter and dispose of it properly.
4. Insert a new LEVOIT Core 300-RF replacement filter (ensure plastic packaging is removed).
5. Replace the filter cover and twist clockwise to lock.
6. Plug in the air purifier and press and hold the Filter Reset Button for 3 seconds to reset the filter life indicator.

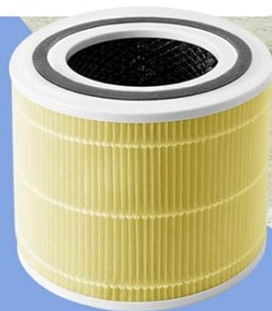
Cleaning the Unit

- Always unplug the air purifier before cleaning.
- Wipe the exterior of the unit with a soft, dry cloth.
- The pre-filter can be gently vacuumed to remove larger particles like dust and pet hair, extending the life of the filter. Do not wash the filter with water.

Breathe Fresh — Helps with Pet Problems

Pre-Filter captures fur. High-Efficiency Activated Carbon Filter effectively addresses strong smells like pet odors.

CUSTOM CHOICE



Pet Allergy Filter

Note: The Original Filter comes pre-installed.
Additional custom filters must be purchased separately.

Image: A LEVOIT Core 300 Air Purifier in a room with a child and cat, illustrating its effectiveness against pet problems. A "Pet Allergy Filter" is shown, highlighting the specialized filtration options.

Breathe Better — Quickly Eliminates Smoke Pollution

Effectively captures TVOCs, NO₂, SO₂, and other hazardous particles from wildfires, smoke, cooking odors, and various other sources of indoor air pollution.



Image: A LEVOIT Core 300 Air Purifier in a living room setting, emphasizing its ability to eliminate smoke pollution. A "Smoke Remover Filter" is displayed, indicating specialized filter types for different needs.

Breathe Pure — Helps with City Pollution

Effectively filters smoke, smog, and VOCs.



Image: A LEVOIT Core 300 Air Purifier on a desk in an urban setting, highlighting its effectiveness against city pollution. A "Toxin Absorber Filter" is shown, demonstrating specialized filter options.

TROUBLESHOOTING

If you encounter issues with your air purifier, refer to the following common problems and solutions:

Problem	Possible Cause	Solution
Air Purifier does not turn on.	Not plugged in; power outage; filter cover not installed correctly.	Ensure the power cord is securely plugged in. Check for power outages. Reinstall the filter cover correctly.
Airflow is significantly reduced.	Filter is dirty or clogged.	Clean the pre-filter or replace the 3-in-1 filter.
Unusual noise.	Filter not installed correctly; foreign object inside.	Ensure the filter is securely in place. Unplug and check for any foreign objects.

Problem	Possible Cause	Solution
Filter indicator light remains on after replacement.	Filter indicator not reset.	Press and hold the Filter Reset Button for 3 seconds to reset.

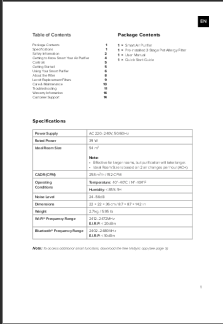
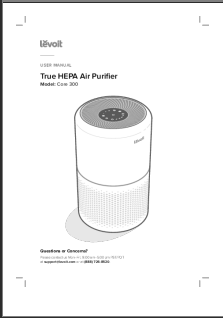
SPECIFICATIONS

- **Brand:** LEVOIT
- **Model:** Core 300
- **Color:** White
- **Package Dimensions:** 16.3 x 10.12 x 9.92 inches
- **Item Weight:** 8.75 pounds
- **Noise Level:** 24 dB (Sleep Mode)
- **Controller Type:** Button Control
- **Certifications:** CARB Certified, Energy Star Certified
- **Coverage Area:** Cleans 1095 sq. ft. in 12 minutes (141 CFM CADR)
- **Filtration:** 3-in-1 Pre-Filter, True HEPA Filter, High-Efficiency Activated Carbon Filter

WARRANTY AND SUPPORT

The LEVOIT Core 300 Air Purifier comes with a **2-year warranty**. For any product support, technical assistance, or warranty claims, please contact LEVOIT customer service. You can also refer to the official user manual PDF for more detailed information [LEVOIT Core 300 User Manual \(PDF\)](#).

Related Documents - Core 300

	<p>Levoit Smart Air Purifier User Manual and Guide</p> <p>Comprehensive user manual for the Levoit Smart Air Purifier (LAP-C302S-AEUR), detailing specifications, operation, maintenance, safety, and troubleshooting. Features 3-stage filtration and VeSync app connectivity for enhanced indoor air quality.</p>
	<p>Levoit Core 300 True HEPA Air Purifier User Manual</p> <p>Comprehensive user manual for the Levoit Core 300 True HEPA Air Purifier, covering setup, operation, maintenance, troubleshooting, and warranty information.</p>

 <p>Levoit USER MANUAL Smart True HEPA Air Purifier Product Series: Core 300S Model: Core 300S</p> <p>Questions or Concerns? Please contact Levoit at 1-800-405-4000 or support@levoit.com © 2024 Levoit Corporation</p>	<p>Levoit Core 300S Smart True HEPA Air Purifier User Manual</p> <p>Comprehensive user manual for the Levoit Core 300S Smart True HEPA Air Purifier. Learn about setup, operation, maintenance, troubleshooting, and VeSync app features.</p>
 <p>Levoit USER MANUAL True HEPA Air Purifier Model: Core 300</p> <p>Questions or Concerns? Please contact Levoit at 1-800-405-4000 or support@levoit.com © 2024 Levoit Corporation</p>	<p>Levoit Core 300 True HEPA Air Purifier User Manual</p> <p>Comprehensive user manual for the Levoit Core 300 True HEPA Air Purifier, covering setup, operation, maintenance, troubleshooting, and safety information.</p>
 <p>Levoit USER MANUAL Air Purifier Product Series: Core 300 Models: Core 300, Core 300-RAC</p> <p>Questions or Concerns? Please contact Levoit at 1-800-405-4000 or support@levoit.com © 2024 Levoit Corporation</p>	<p>Levoit Core 300 Air Purifier User Manual Setup, Specs & Maintenance</p> <p>Comprehensive user manual for the Levoit Core 300 Air Purifier. Includes setup instructions, specifications, safety information, maintenance guide, troubleshooting, and warranty details for models Core 300 and Core 300-RAC.</p>
 <p>Levoit USER MANUAL Core 300 Series Air Purifier Product Series: Core 300-P series Models: Core 300, Core 300-PAC</p> <p>Questions or Concerns? Please contact Levoit at 1-800-405-4000 or support@levoit.com © 2024 Levoit Corporation</p>	<p>Levoit Core 300 Series Air Purifier User Manual Setup, Operation, and Maintenance</p> <p>Comprehensive user manual for the Levoit Core 300 and Core 300-P series air purifiers. Includes setup instructions, operating guide, maintenance tips, troubleshooting, and warranty information for optimal air quality.</p>