

GAPPO Y24043-1-US

GAPPO Rain Shower System Instruction Manual

Model: Y24043-1-US

		Introduction	Safety Information	Package		
Contents	Installation	Operation	Maintenance	Troubleshooting	Specifications	Warranty & Support

1. INTRODUCTION

Thank you for choosing the GAPPO Rain Shower System. This manual provides detailed instructions for the safe installation, operation, and maintenance of your new shower system. Designed for a luxurious and efficient showering experience, this system features a high-pressure rainfall shower head, a handheld shower wand, and a pressure balance valve for consistent water temperature. Please read this manual thoroughly before installation and keep it for future reference.



Figure 1.1: Overview of the GAPPO Rain Shower System components.

2. SAFETY INFORMATION

Please observe the following safety precautions to prevent injury and damage to the product:

- Always turn off the main water supply before beginning any installation or maintenance.
- If you are unsure about any part of the installation process, consult a qualified plumber.
- Wear appropriate personal protective equipment (PPE) such as safety glasses and gloves during installation.
- Ensure all connections are secure and watertight to prevent leaks.
- The pressure balance valve is designed to protect against scalding and cold shocks; do not tamper with it.
- Keep small parts out of reach of children to prevent choking hazards.

3. PACKAGE CONTENTS

Verify that all components listed below are present and undamaged before proceeding with installation. If any parts are missing or damaged, please contact GAPPO customer support.

- 10-inch Fixed Square Shower Head
- Stainless Steel Hand-held Shower Wand
- 16-inch Shower Arm
- 71-inch Shower Hose
- Shower Holder
- Pressure Balancing Mixer Valve Body (includes trim and rough-in valve)



Figure 3.1: All included components of the shower system.

4. INSTALLATION INSTRUCTIONS

This shower kit is designed for compatibility with US plumbing standards. Professional installation is recommended.

4.1 Pre-Installation Checks

1. Ensure the main water supply to the bathroom is turned off.
2. Verify that you have all necessary tools: pipe wrench, screwdriver, thread seal tape, level, measuring tape.
3. Confirm wall structure can support the installation.

4.2 Rough-in Valve Installation

The pressure balancing mixer valve body is the core of the system. It should be installed near the concealed water pipe.



Figure 4.1: Detailed view of the rough-in valve connections.

- Identify the hot and cold water supply lines. Connect them to the corresponding NPT 1/2" inlets on the valve body.
- Connect the fixed shower head outlet (NPT 1/2") and the handheld shower outlet (NPT 1/2") to their respective lines.
- Securely mount the valve body within the wall, ensuring it is level and at the correct depth (approximately 75mm wall slotted depth).

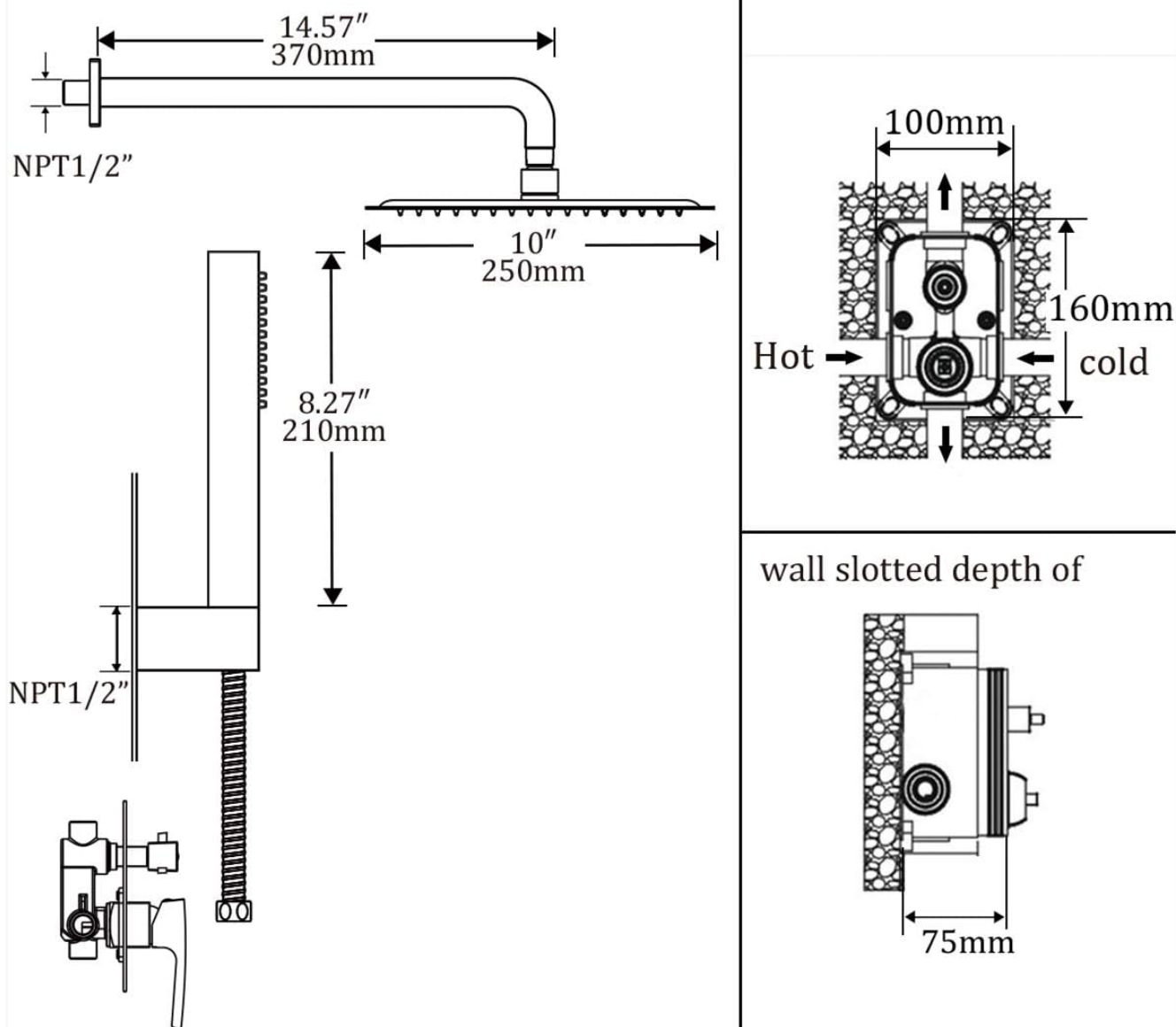


Figure 4.2: Dimensional diagram for installation planning.

4.3 Shower Head and Arm Installation

1. Apply thread seal tape to the threads of the 16-inch shower arm.
2. Screw the shower arm into the fixed shower head connector in the wall. Tighten securely.
3. Attach the 10-inch fixed square shower head to the end of the shower arm. Ensure the connection is tight to prevent leaks.



Figure 4.3: The shower system installed and in operation.

4.4 Handheld Shower Wand Installation

1. Install the shower holder at a convenient height on the wall, connecting it to the handheld shower outlet from the rough-in valve.
2. Connect one end of the 71-inch shower hose to the shower holder.
3. Connect the other end of the shower hose to the stainless steel handheld shower wand.
4. Place the handheld shower wand into the holder.



Figure 4.4: Handheld shower wand and hose assembly.

4.5 Final Checks

1. Once all connections are made, slowly turn on the main water supply.
2. Check for any leaks at all connection points. Tighten if necessary.
3. Test the functionality of both the rainfall shower head and the handheld shower wand.

5. OPERATING INSTRUCTIONS

The GAPPO Rain Shower System is designed for ease of use and a consistent showering experience.

5.1 Water Flow and Temperature Control

- The main handle on the valve body controls both water flow and temperature.
- Rotate the handle to adjust the water temperature. The pressure balance valve will maintain a consistent temperature, protecting you from sudden changes.

- Pull the handle outwards or push inwards to control the water flow.

5.2 Shower Outlet Selection

- A diverter knob on the valve body allows you to switch between the rainfall shower head and the handheld shower wand.
- Turn the knob to select your desired water outlet.

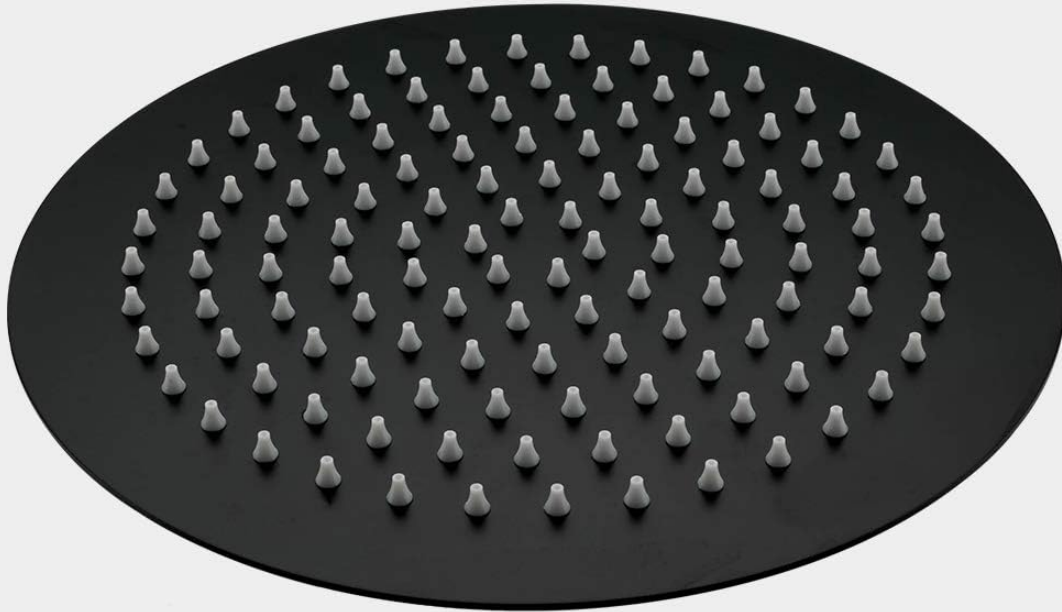
5.3 Air Injection Technology

This system incorporates air injection technology, which mixes air with water to provide a powerful rainfall experience while saving up to 30% on water consumption. This technology also helps reduce noise and is beneficial in areas with low water pressure.



Figure 5.1: Air injection technology in action.

10-INCH POWERFUL RAIN SHOWER HEAD



**Adjustable
angel connector**



**Easy clean
silicone nozzle**



**High quality
electroplated black**



Figure 5.2: Features of the 10-inch rainfall shower head.

6. MAINTENANCE

Proper care and maintenance will ensure the longevity and optimal performance of your GAPPO Rain Shower System.

6.1 Cleaning the Finish

- Clean the matte black finish with a soft, damp cloth.
- Avoid abrasive cleaners, harsh chemicals, or scouring pads, as these can damage the finish.
- For stubborn spots, use a mild soap solution and rinse thoroughly.

6.2 Cleaning Shower Head Nozzles

- The silicone nozzles on the shower head are designed for easy cleaning.
- Periodically rub the nozzles with your finger or a soft brush to dislodge any mineral buildup or debris.

- For significant mineral deposits, a solution of white vinegar and water can be used. Soak the shower head (if removable) or apply the solution directly to the nozzles, then rinse thoroughly.

7. TROUBLESHOOTING

Refer to this section for common issues and their solutions. If the problem persists, contact customer support.

Problem	Possible Cause	Solution
Low Water Pressure	Clogged shower head nozzles; partially closed main water valve; low household water pressure.	Clean shower head nozzles. Ensure main water valve is fully open. Consult a plumber for household water pressure issues.
Leaks at Connections	Loose connections; insufficient thread seal tape; damaged O-rings/gaskets.	Tighten connections. Reapply thread seal tape. Inspect and replace O-rings/gaskets if damaged.
Inconsistent Water Temperature	Pressure balance valve malfunction; issues with hot/cold water supply.	Ensure hot and cold water supplies are stable. If problem persists, contact a qualified plumber or customer support.
Diverter Not Switching Properly	Debris in diverter mechanism; worn diverter cartridge.	Flush the system. If necessary, the diverter cartridge may need inspection or replacement by a professional.

8. SPECIFICATIONS

Key technical specifications for the GAPPO Rain Shower System:

Feature	Detail
Brand	GAPPO
Model Number	Y24043-1-US
Color	Matte Black
Material	Brass, Stainless Steel
Finish Type	Matte Black
Number of Handles	3
Mounting Type	Wall Mount
Shower Head Size	10 inch (250mm) Square
Shower Arm Length	16 inch (370mm)
Shower Hose Length	71 inch
Valve Type	Pressure Balancing Mixer Valve (Ceramic Valve Core)

Feature	Detail
Water Saving Technology	Air Injection Technology (up to 30% water saving)
Item Weight	10.69 pounds (4.86 Kilograms)
Package Dimensions	17.76 x 13.27 x 5.67 inches
UPC	783710051059, 780744415208

9. WARRANTY & SUPPORT

GAPPO is committed to providing high-quality products. For specific warranty details regarding your Rain Shower System, please refer to the warranty card included with your purchase or visit the official GAPPO website. Keep your proof of purchase for warranty claims.

For technical assistance, troubleshooting beyond this manual, or to order replacement parts, please contact GAPPO customer support. Contact information can typically be found on the product packaging or the brand's official website.

Visit the GAPPO Store: [GAPPO Official Store](#)