

## Corsair 4000D AIRFLOW

# Corsair 4000D Airflow Tempered Glass Mid-Tower ATX PC Case - White Instruction Manual

Model: 4000D AIRFLOW | Brand: Corsair

## 1. INTRODUCTION

This manual provides comprehensive instructions for the setup, operation, and maintenance of your Corsair 4000D Airflow Tempered Glass Mid-Tower ATX PC Case. The Corsair 4000D Airflow is designed for optimal cooling and efficient cable management, featuring a steel front panel for enhanced airflow and two included 120mm AirGuide fans. It offers ample space for various components, including radiators up to 360mm, and supports four storage drives. The modern front I/O panel includes a USB-C port for convenient connectivity.

## 2. KEY FEATURES

- **Optimized Airflow:** High-airflow steel front panel and two 120mm AirGuide fans with anti-vortex vanes ensure efficient cooling.
- **CORSAIR RapidRoute Cable Management:** Simplifies cable routing through a single channel with 25mm depth behind the motherboard.
- **Extensive Cooling Potential:** Supports up to 6x 120mm or 4x 140mm fans, and multiple radiators (up to 360mm front, 280mm roof, dependent on RAM height).
- **Flexible Storage Options:** Accommodates up to four storage drives (2x 2.5" SSD mounts, 2x 3.5" HDD trays).
- **Modern Front I/O:** Includes 1x USB 3.0 port, 1x USB Type-C port, and a 3.5mm combination headphone/mic jack for easy access.

## 3. CASE COMPONENTS OVERVIEW

Familiarize yourself with the key components and features of your Corsair 4000D Airflow case.



**Figure 3.1:** Front view of the Corsair 4000D Airflow PC Case in white, showcasing the mesh front panel and tempered glass side panel with internal RGB lighting.

## HIGH-AIRFLOW FRONT PANEL

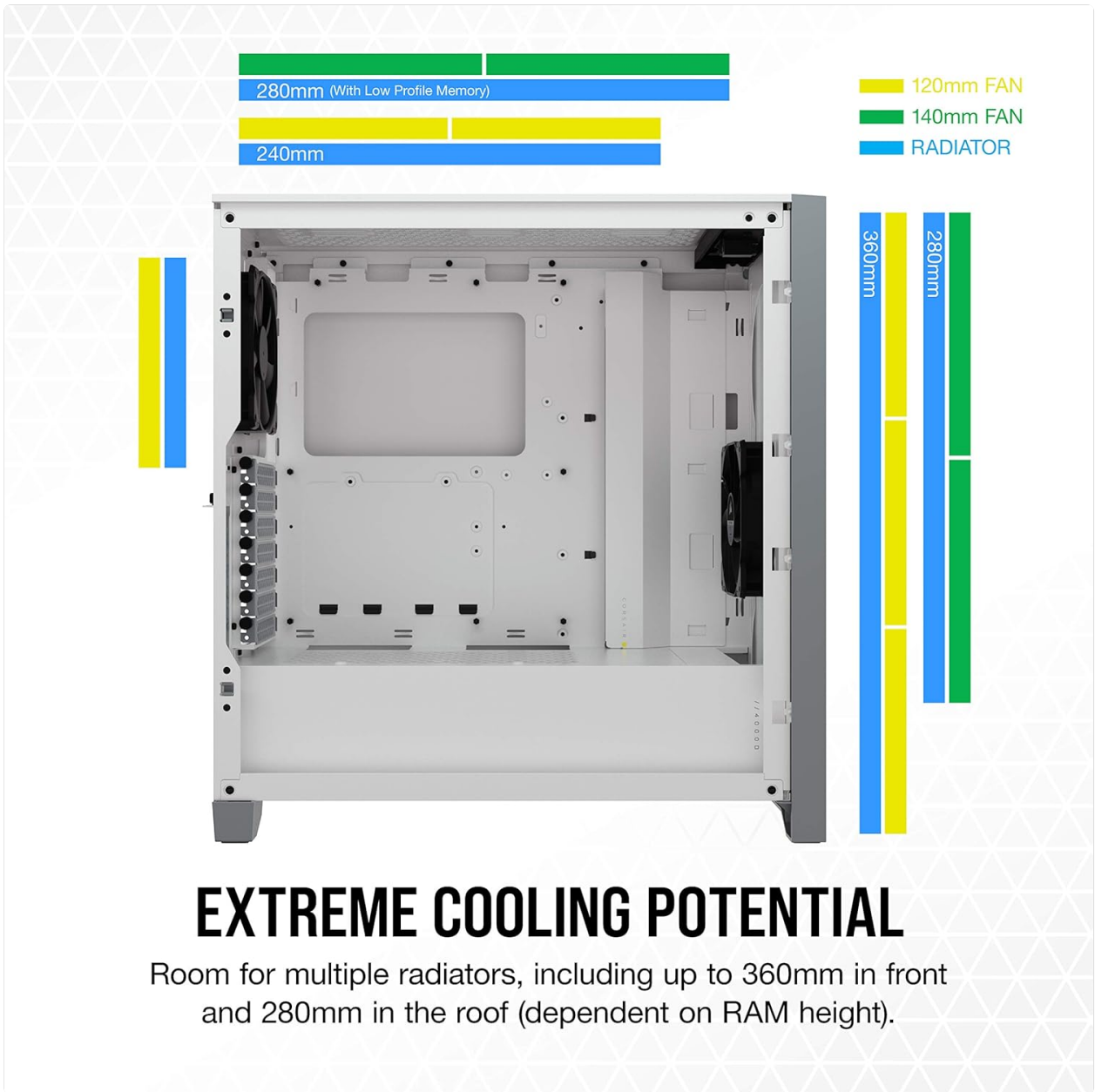
An optimized steel front panel delivers high airflow to your system for maximum cooling.



## 2x 120MM FANS INCLUDED

CORSAIR AirGuide fans utilize anti-vortex vanes to enhance cooling.

**Figure 3.2:** The high-airflow front panel, designed for maximum cooling, shown alongside the two included 120mm CORSAIR AirGuide fans.



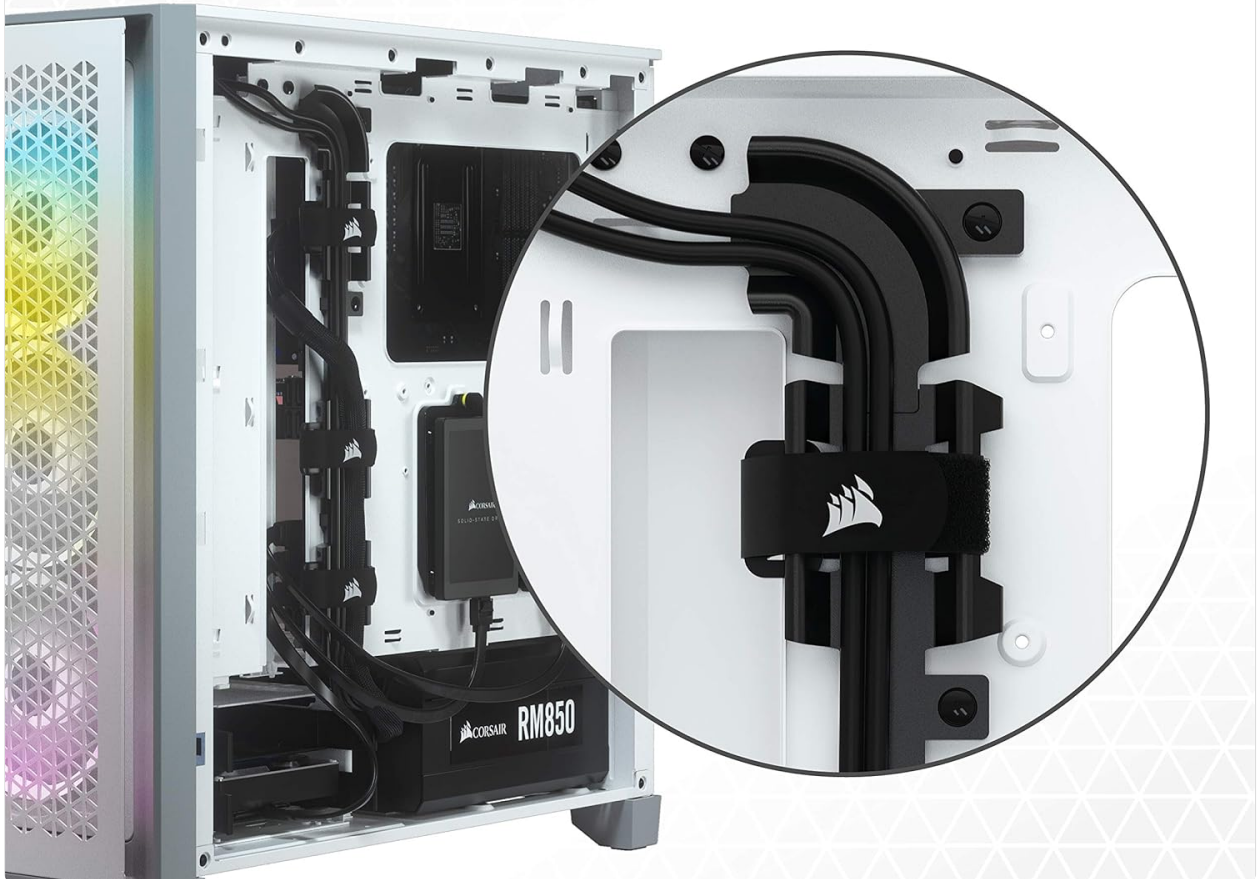
## EXTREME COOLING POTENTIAL

Room for multiple radiators, including up to 360mm in front and 280mm in the roof (dependent on RAM height).

**Figure 3.3:** An internal view highlighting the case's capacity for multiple radiators (up to 360mm in front and 280mm in the roof) and various fan configurations.

# SIMPLE AND EASY CABLE ROUTING

CORSAIR RapidRoute cable management system routes major cables through a single channel, with 25mm of depth along the side of the case.



**Figure 3.4:** The CORSAIR RapidRoute cable management system, demonstrating how major cables are routed through a single channel behind the motherboard tray.

# FITS UP TO FOUR DRIVES

Comes with 2x 2.5in SSD mounts and 2x 3.5in HDD trays for the storage you need.

**A** **2x**  
2.5" SSD Mounts

**B** **2x**  
3.5" HDD Trays

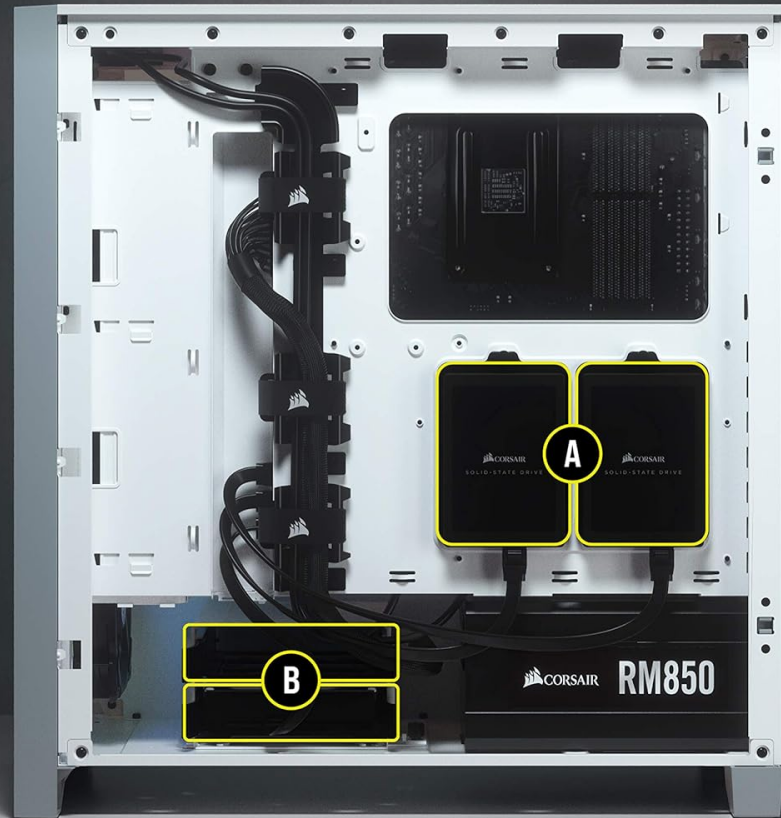
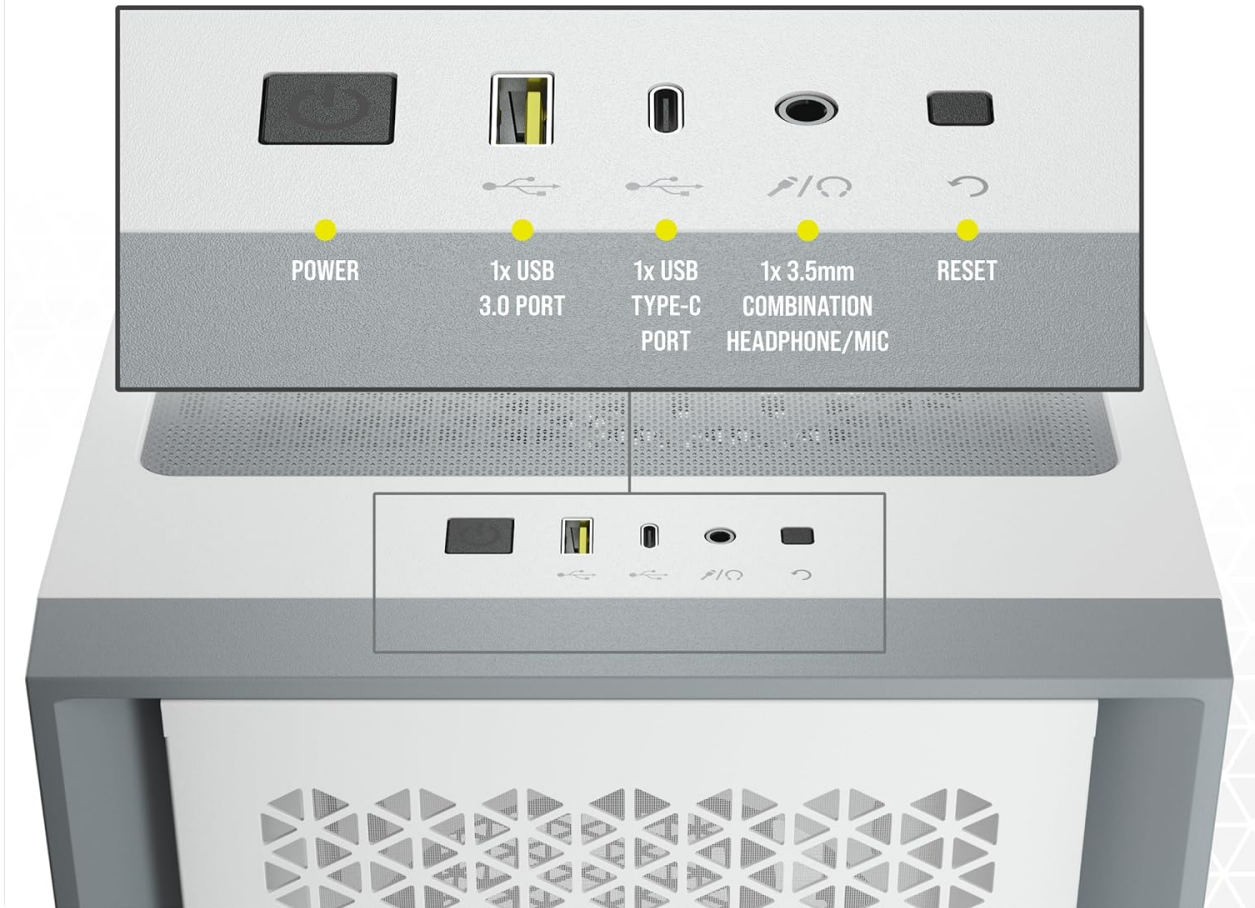


Figure 3.5: Illustration of the drive mounting options, including two 2.5" SSD mounts and two 3.5" HDD trays.

# FRONT PANEL I/O

Puts modern connections within easy reach.



**Figure 3.6:** The convenient front I/O panel, featuring a power button, 1x USB 3.0 port, 1x USB Type-C port, and a 3.5mm combination audio jack.

## 4. SETUP AND INSTALLATION

This section guides you through the process of setting up your PC components within the Corsair 4000D Airflow case. For a visual guide, please refer to the installation video below.

1. **Prepare the Case:** Remove the tempered glass side panel by loosening the captive thumbscrews at the rear and gently swinging the panel open. Lift it off the hinges. The solid steel side panel can be removed similarly.
2. **Install Motherboard:** Secure your ATX, MicroATX, or MiniATX motherboard using the provided standoffs and screws. Ensure all necessary front panel connectors (USB 3.0, USB Type-C, audio, power, reset) are routed through the cable management channels.
3. **Install Power Supply (PSU):** Install your power supply unit into the dedicated compartment at the bottom rear of the case. Utilize the cable management system to route PSU cables neatly.
4. **Install Storage Drives:** Mount 2.5" SSDs onto the dedicated trays behind the motherboard tray. Install 3.5" HDDs into the drive cage located beneath the PSU shroud.
5. **Install Cooling Components:** Install additional fans or radiators as needed. The case supports up to 3x

120mm or 2x 140mm fans in the front, 2x 120mm or 2x 140mm fans in the roof, and 1x 120mm fan in the rear. Radiator support includes up to 360mm in the front and 280mm in the roof.

6. **Install Graphics Card (GPU):** Insert your graphics card into the appropriate PCIe slot. The case also supports vertical GPU mounting (requires a separate PCIe riser cable).
7. **Cable Management:** Utilize the CORSAIR RapidRoute system and included cable ties to organize all internal cables for optimal airflow and aesthetics.
8. **Final Assembly:** Reattach the side panels, ensuring they are securely fastened.

## Setup Video Guide

---

Your browser does not support the video tag.

**Video 4.1:** A detailed video guide demonstrating the installation process for the Corsair 4000D ATX case, including component placement and cable management. This video is provided by a seller-affiliated creator.

## 5. OPERATING INSTRUCTIONS

---

Once your PC is fully assembled and connected, operating the Corsair 4000D Airflow case is straightforward:

- **Power On/Off:** Press the power button located on the front I/O panel to turn your system on or off.
- **USB Connectivity:** Use the front USB 3.0 and USB Type-C ports for connecting peripherals and external storage devices.
- **Audio:** Connect your headphones or microphone to the 3.5mm combination audio jack on the front panel.
- **Airflow:** The case is designed for continuous high airflow. Ensure no obstructions block the front mesh panel or top ventilation.

## 6. MAINTENANCE

---

Regular maintenance ensures optimal performance and longevity of your PC components.

- **Dust Filter Cleaning:** The Corsair 4000D Airflow includes easily removable dust filters on the front, top, and bottom. Regularly remove and clean these filters to prevent dust buildup and maintain optimal airflow. Use compressed air or a soft brush for cleaning.
- **Interior Cleaning:** Periodically open the side panels and use compressed air to remove dust from internal components such as fans, heatsinks, and graphics cards. Ensure the system is powered off and unplugged before cleaning.
- **Cable Management Check:** Occasionally inspect cable routing to ensure no cables are obstructing airflow or fan operation.

## 7. TROUBLESHOOTING

---

This section addresses common issues you might encounter with your PC case.

Issue	Possible Cause	Solution
Poor Airflow / High Temperatures	Dust buildup in filters or fans, incorrect fan orientation, obstructed vents.	Clean dust filters and internal components. Ensure fans are oriented correctly (intake/exhaust). Check for any physical obstructions.
Front I/O Ports Not Working	Cables from the front panel not correctly connected to the motherboard.	Verify that the USB 3.0, USB Type-C, and audio cables from the front I/O are securely connected to the corresponding headers on your motherboard. Refer to your motherboard manual for correct pinouts.
System Not Powering On	Power button cable disconnected, PSU issue, or other component failure.	Check the power button cable connection to the motherboard. Ensure the PSU is properly connected and switched on. Test PSU functionality if possible.

## 8. TECHNICAL SPECIFICATIONS

<b>Brand</b>	Corsair
<b>Model Name</b>	4000D AIRFLOW
<b>Case Type</b>	Mid Tower
<b>Color</b>	White
<b>Material</b>	Alloy Steel, Tempered Glass, Plastic
<b>Motherboard Compatibility</b>	Extended ATX, ATX, MicroATX, MiniATX
<b>Cooling Method</b>	Air
<b>Number of Fans Included</b>	2 (120mm AirGuide)
<b>Max Fan Support</b>	6x 120mm or 4x 140mm
<b>Radiator Support</b>	Up to 360mm (front), 280mm (roof)
<b>Internal Bays</b>	2x 2.5" SSD, 2x 3.5" HDD
<b>Front I/O Ports</b>	1x USB 3.0, 1x USB Type-C, 1x 3.5mm Combo Audio
<b>Item Weight</b>	17.3 Pounds
<b>Item Dimensions (D x W x H)</b>	17.83"D x 9.06"W x 18.35"H

## 9. WARRANTY AND SUPPORT

Your Corsair 4000D Airflow PC Case comes with a **2-year manufacturer warranty**.

For technical support, warranty claims, or additional product information, please visit the official Corsair support website or contact their customer service. Keep your proof of purchase for warranty validation.

**Online Support:** [www.corsair.com/support](http://www.corsair.com/support)

