

Manuals+

[Q & A](#) | [Deep Search](#) | [Upload](#)

Manuals.plus /

› [COGO MAN](#) /

› COGO MAN Merry Go Round Carousel Toy - Model 1102 Instruction Manual

COGO MAN 1102

COGO MAN Merry Go Round Carousel Toy - Model 1102 Instruction Manual

Your guide to assembly, operation, and care.

1. INTRODUCTION

Thank you for choosing the COGO MAN Merry Go Round Carousel Toy, Model 1102. This playset is designed to provide an engaging and educational experience, allowing children to assemble their own amusement park carousel. This manual provides essential information for safe assembly, operation, and maintenance of the toy.

The set includes a carousel, a ticket station, a doll figure, a tree, a destination board, and various fence pieces, along with a child-friendly drill for assembly.



Image 1.1: Overview of the COGO MAN Merry Go Round Carousel Toy and its included components.

2. PACKAGE CONTENTS

Please verify that all components listed below are present in your package. If any parts are missing, please contact customer support.

- 1 x Carousel assembly (base, rotating platform, canopy, horses)
- 1 x Ticket Station
- 1 x Doll figure
- 1 x Tree accessory
- 1 x Destination Board sign
- Multiple Fence pieces
- 1 x Child-friendly assembly drill
- Assorted screws and small parts for assembly
- Play money (coupons and coins)



Image 2.1: All individual components of the playset laid out for identification.

3. SETUP AND ASSEMBLY

The COGO MAN Merry Go Round Carousel Toy is designed for hands-on assembly, promoting motor skills and hand-eye coordination. Follow these steps carefully.

3.1 Carousel Assembly

1. Attach the carousel base to the main support structure using the provided screws and child-friendly drill.
2. Secure the rotating platform onto the base.
3. Connect the carousel canopy to the central shaft. Ensure it is firmly in place.
4. Attach the individual horse figures to the rotating platform. Each horse should have a designated slot.

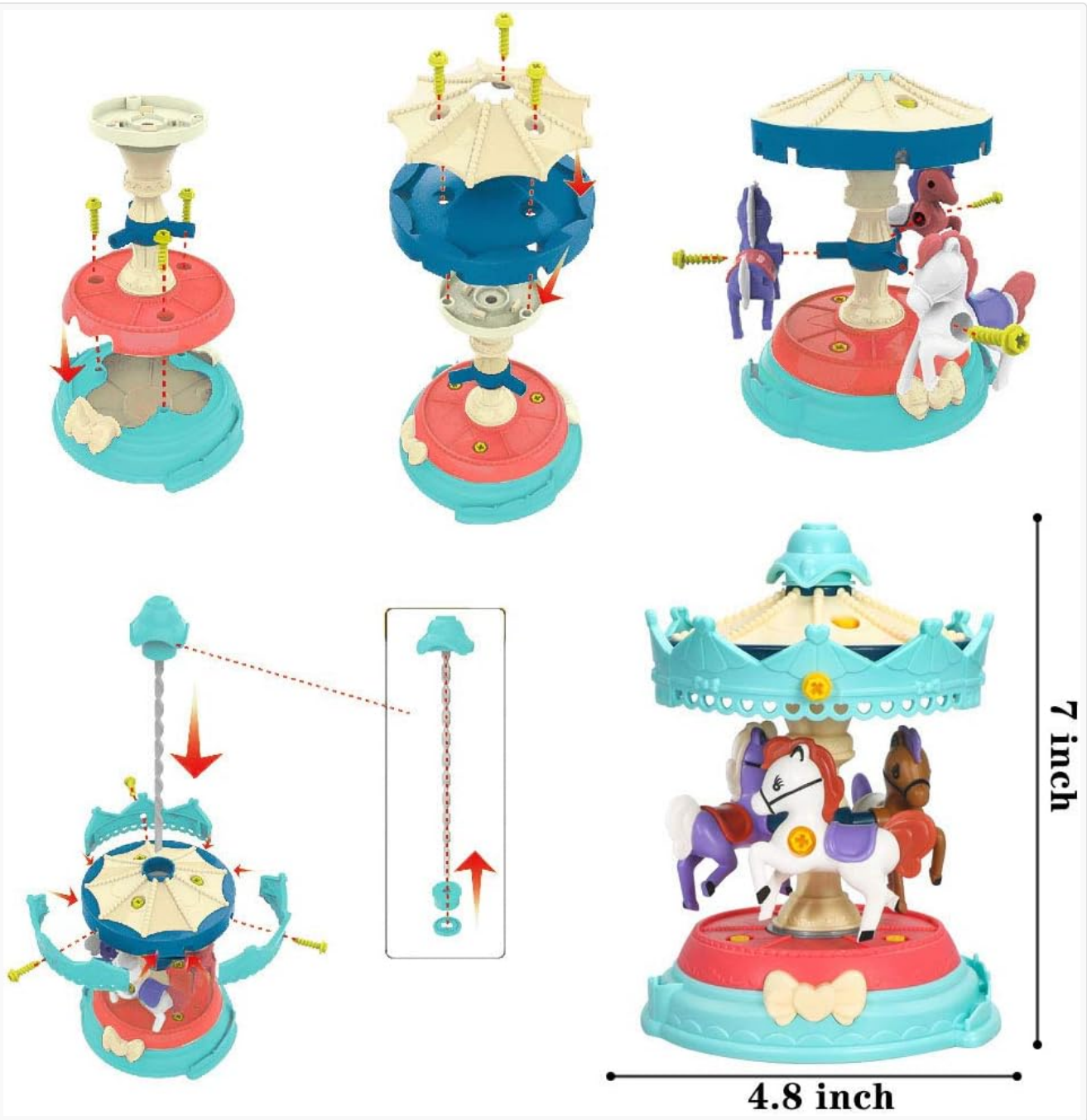


Image 3.1: Visual guide for assembling the main carousel structure.

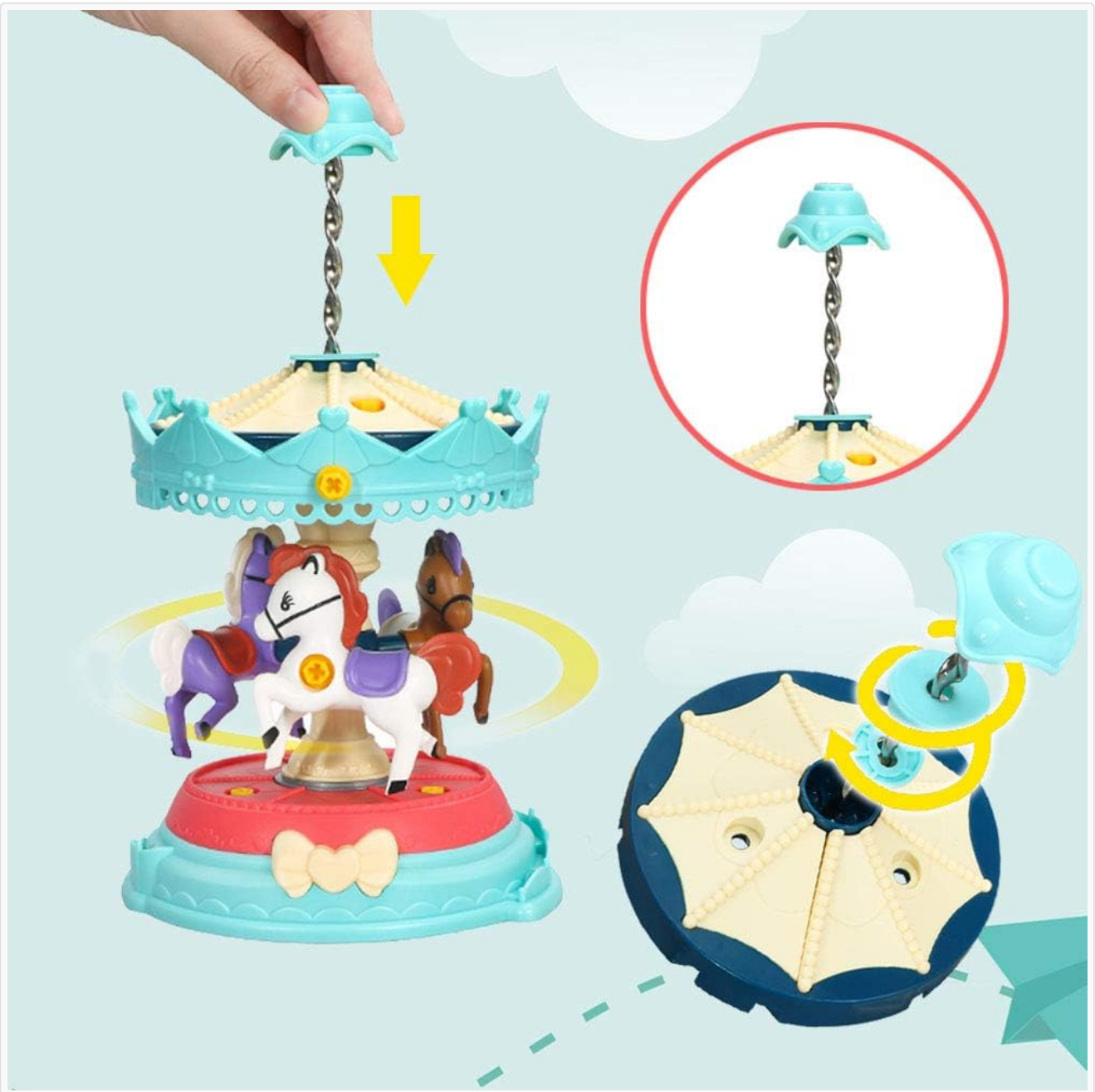


Image 3.2: Illustration of how to securely attach the carousel's top canopy.

3.2 Accessory Assembly

1. Assemble the doll figure by connecting its body parts as shown in the diagram.
2. Assemble the ticket station by joining the designated pieces.
3. Place the tree and destination board in desired locations around the carousel.
4. Connect the fence pieces to create an enclosure around the playset.

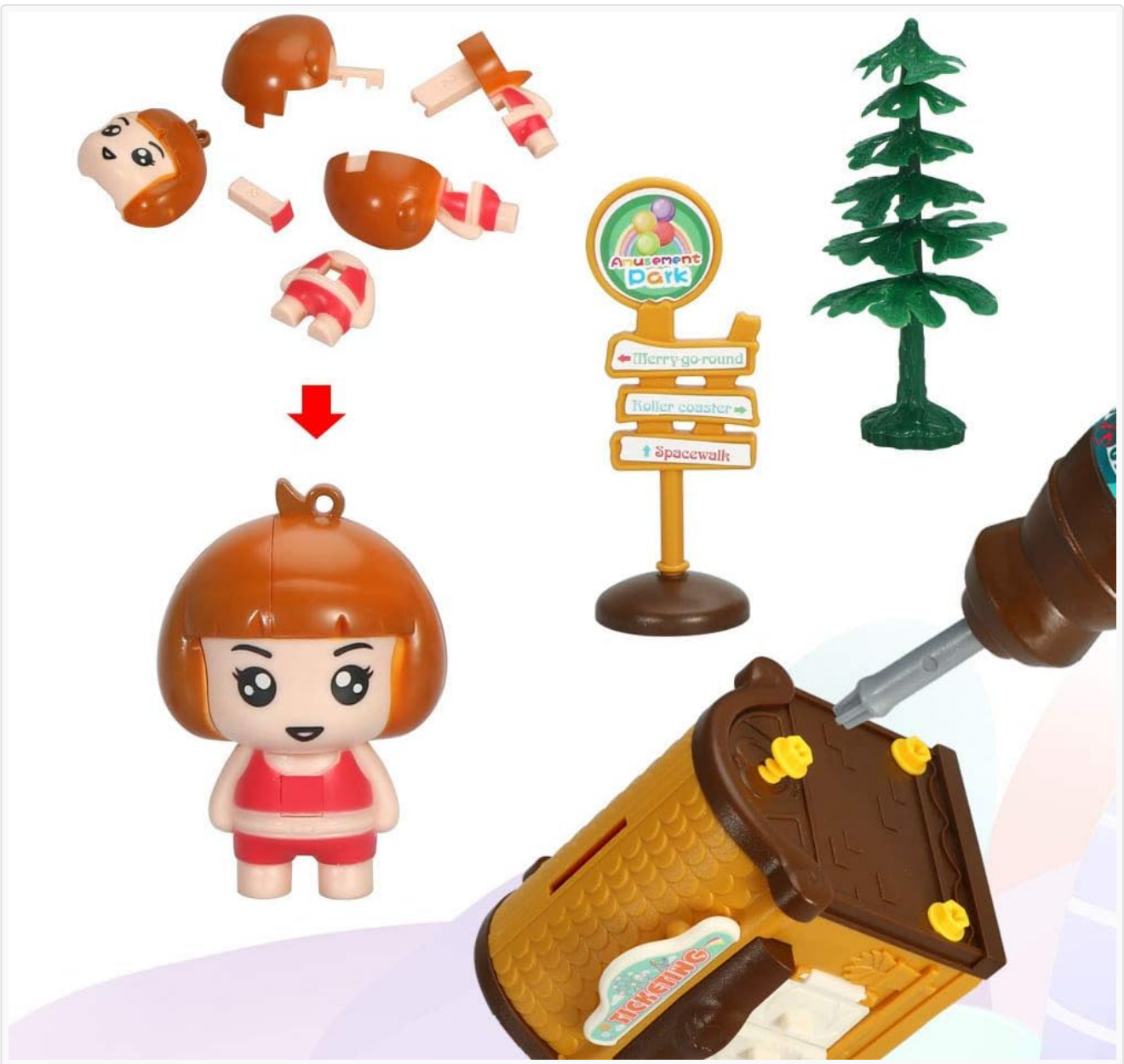


Image 3.3: Instructions for assembling the doll and ticket booth.

4. OPERATING INSTRUCTIONS

4.1 Activating the Carousel Spin

To make the carousel spin, gently pull the shaft located on the top of the carousel canopy upwards. Release the shaft, and the carousel will rotate for a period, simulating a real merry-go-round.

4.2 Engaging with the Ticket Station

The ticket station includes play coupons and coins. Children can use these to simulate purchasing tickets for the carousel, fostering basic understanding of money and transactions.

5. MAINTENANCE

To ensure the longevity and cleanliness of your COGO MAN Merry Go Round Carousel Toy, follow these simple maintenance guidelines:

- **Cleaning:** Wipe all surfaces with a soft, damp cloth. Do not use harsh chemicals or abrasive cleaners, as these may damage the toy's finish.

- **Storage:** Store the toy in a clean, dry place away from direct sunlight and extreme temperatures when not in use.
- **Inspection:** Periodically check all assembled parts to ensure they are securely fastened. Tighten any loose screws with the child-friendly drill if necessary.

6. TROUBLESHOOTING

If you encounter any issues with your COGO MAN Merry Go Round Carousel Toy, please refer to the following common solutions:

- **Carousel not spinning smoothly:** Ensure no foreign objects are obstructing the rotating mechanism. Check that the central shaft is properly aligned and not bent.
- **Parts not fitting together:** Review the assembly instructions carefully. Some parts may require a specific orientation. Do not force parts together, as this can cause damage.
- **Missing parts:** Refer to the 'Package Contents' section. If a part is genuinely missing from the original package, contact customer support.

7. SPECIFICATIONS

Feature	Detail
Model Number	1102
ASIN	B08BRCZDPH
Package Dimensions	9.1 x 7.3 x 3.7 inches
Item Weight	12 ounces
Manufacturer Recommended Age	3 years and up
Manufacturer	Shantou Weichen Network Technology Co., Ltd.

8. SAFETY INFORMATION

WARNING: CHOKING HAZARD - Small Parts. Not for children under 3 years.

- This toy contains small parts that may pose a choking hazard for young children, especially those under 3 years of age. Adult supervision is required during play.
- Ensure all parts are securely assembled before allowing children to play. Regularly check for loose components.
- The tree accessory has pointed edges; ensure children handle it with care to avoid injury.
- Do not allow children to put small parts, such as the play money or individual fence pieces, into their mouths.
- Keep packaging materials away from children to prevent suffocation.

9. WARRANTY AND SUPPORT

Specific warranty information for the COGO MAN Merry Go Round Carousel Toy, Model 1102, is not provided in this manual. For details regarding warranty coverage, returns, or technical support, please refer to the retailer's policy where the product was purchased or contact the manufacturer directly.

