

JEKCA 01S-M03

JEKCA Cockapoo 01S-M03 Plastic Building Blocks Instruction Manual

Model: 01S-M03

1. INTRODUCTION

Thank you for choosing the JEKCA Cockapoo 01S-M03 Plastic Building Blocks. This manual provides essential information for the assembly, care, and maintenance of your model. Please read these instructions carefully before beginning assembly to ensure a successful and enjoyable building experience.

2. SAFETY INFORMATION

This product contains small parts. It is recommended for individuals **14 years of age or above**. Keep small parts away from young children to prevent choking hazards. Adult supervision is advised for younger builders within the recommended age range.

3. WHAT'S IN THE BOX

Verify that all components are present before starting assembly:

- Instruction Manual
- Bricks (over 900 pieces)
- Pins
- Pin Driver
- Quick Guide

4. SETUP AND ASSEMBLY

The JEKCA building system utilizes a patented interlocking brick-through system, ensuring a sturdy and durable model. Follow the detailed steps in the included instruction manual for proper assembly.

4.1 Understanding the Interlocking System

Each brick is secured using a pin and a pin driver. This method creates a strong connection, preventing the model from easily breaking apart.

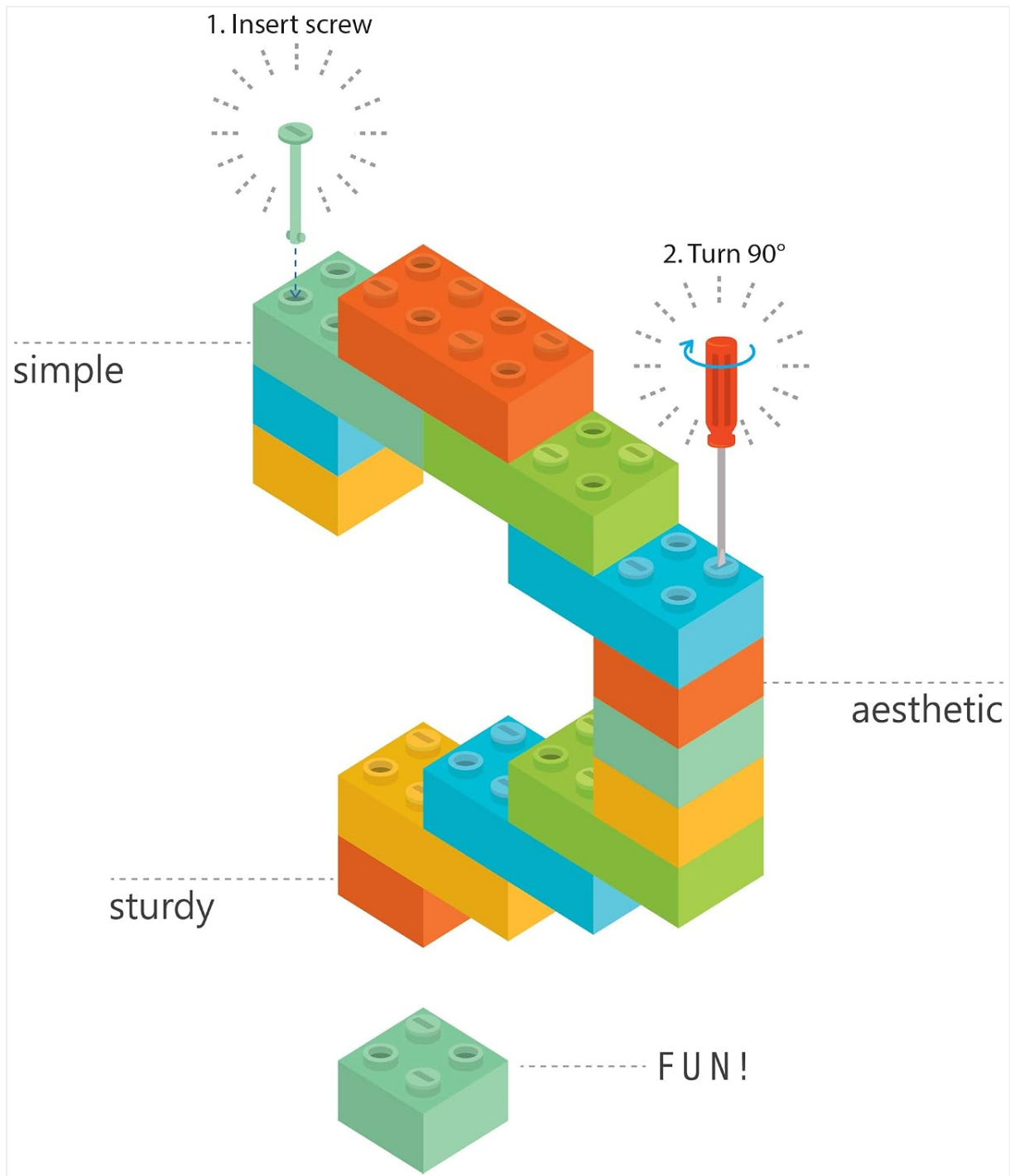
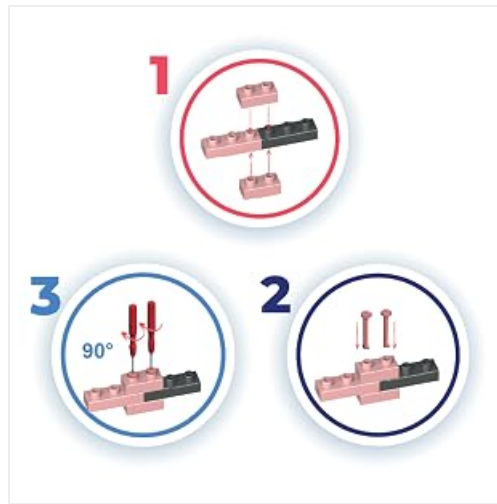
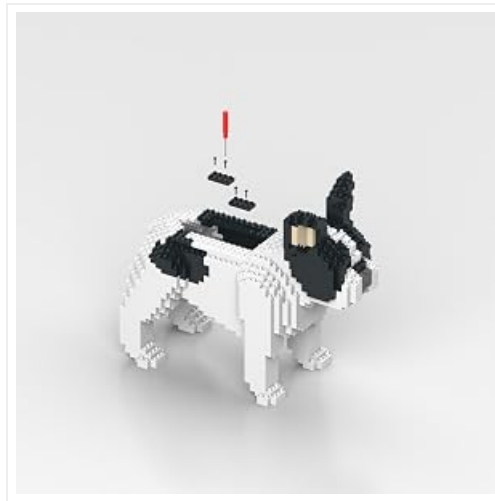


Illustration of the JEKCA interlocking brick-through system. Step 1: Insert screw. Step 2: Turn 90 degrees.



Close-up illustration of JEKCA brick assembly steps.



Detailed illustration of JEKCA brick connection.

4.2 General Assembly Steps

1. **Unpack Components:** Carefully remove all bricks, pins, and the pin driver from the packaging.
2. **Review Manual:** Familiarize yourself with the step-by-step instructions and diagrams provided in the included building manual.
3. **Connect Bricks:** Align the bricks as indicated in the manual. Insert a pin through the designated holes to connect two bricks.
4. **Secure Connection:** Use the pin driver to turn the pin 90 degrees, locking the bricks firmly in place.
5. **Layer by Layer:** Continue building layer by layer, ensuring each connection is secure, until the model is complete.

Video demonstrating the assembly process of a JEKCA-style building block model, showcasing how individual bricks are connected and secured.

4.3 Product Dimensions



Front view of the JEKCA Cockapoo 01S-M03 model, illustrating its dimensions.



Side view of the assembled JEKCA Cockapoo 01S-M03 model.

5. MAINTENANCE

To ensure the longevity and appearance of your JEKCA model:

- **Cleaning:** Use a soft, dry cloth or a gentle brush to remove dust. For stubborn dirt, lightly dampen the cloth with water and wipe carefully. Avoid harsh chemicals or abrasive cleaners.
- **Storage:** Store the assembled model or loose bricks in a cool, dry place away from direct sunlight to prevent discoloration or material degradation.
- **Handling:** While the interlocking system makes the model sturdy, avoid excessive force or dropping to prevent damage to individual bricks or connections.

6. TROUBLESHOOTING

If you encounter issues during assembly or with your completed model, consider the following:

- **Missing Pieces:** Double-check the packaging and your workspace. If pieces are genuinely missing, contact JEKCA customer support.
- **Difficulty Interlocking Bricks:** Ensure the pins are fully inserted and turned 90 degrees with the pin driver. Sometimes, a slight adjustment in brick alignment is needed.
- **Model Instability:** Review previous steps in the instruction manual to confirm all connections are correctly made and secured. An unsecured pin can lead to instability.
- **Disassembly:** To disassemble, use the pin driver to turn the pins back 90 degrees to release the lock, then gently pull the bricks apart.

7. SPECIFICATIONS

Feature	Detail
Product Name	JEKCA Cockapoo 01S-M03 Plastic Building Blocks
Model Number	ST19PT71-M03
Product Dimensions	9.33 x 3.94 x 7.68 inches (23.7 x 10.0 x 19.5 cm)
Item Weight	1.54 pounds
Number of Pieces	Over 900
Recommended Age	14 years and up
Brand	JEKCA

8. WARRANTY INFORMATION

For specific warranty details regarding your JEKCA Cockapoo 01S-M03 Plastic Building Blocks, please refer to the warranty card included in your product packaging or visit the official JEKCA website. Warranty terms typically cover manufacturing defects.

9. SUPPORT

If you require further assistance, have questions about assembly, or need to report missing parts, please contact JEKCA customer support through their official website or the contact information provided in your product documentation. Please have your model number (01S-M03 or ST19PT71-M03) ready when contacting support.