

RPNB RP2002

RPNB Model RP2002 Gun Security Safe User Manual

Quick-Access Firearm Safety Device with Biometric Fingerprint & Digital Key Pad

1. INTRODUCTION

This manual provides essential instructions for the safe and effective use of your RPNB Model RP2002 Gun Security Safe. Please read this manual thoroughly before installation and operation to ensure proper functionality and security.

The RPNB Model RP2002 is designed to secure firearms, ammunition, and other valuables, featuring multiple access methods including biometric fingerprint, digital keypad, and emergency keys.

2. IMPORTANT SAFETY INFORMATION

- Always store firearms unloaded within the safe.
- Keep emergency keys in a secure location away from the safe and out of reach of unauthorized individuals.
- Ensure the safe is securely mounted to prevent unauthorized removal.
- Do not store the safe in areas with extreme temperatures or high humidity.
- Regularly check battery levels to ensure continuous operation.
- Keep the fingerprint sensor clean and free from debris.

3. PACKAGE CONTENTS

Verify that all components are present:

- RPNB Model RP2002 Gun Security Safe
- Emergency Keys (2)
- Mounting Hardware (screws, anchors)
- User Manual (this document)

4. SETUP

4.1 Battery Installation

1. Locate the battery compartment, typically on the inside of the safe door or rear panel.
2. Insert the required batteries (usually AA, not included) according to the polarity indicators.

3. Close the battery compartment cover securely.

4.2 Initial Code Setting

1. With the safe door open, press the internal reset button (refer to diagram for location).
2. Enter your desired 3-6 digit code on the keypad.
3. Press the '#' or 'ENTER' button to confirm.
4. Test the new code with the door open before closing.

4.3 Fingerprint Registration

1. With the safe door open, press the internal reset button.
2. Place your finger on the fingerprint sensor. The indicator light will flash.
3. Lift and place your finger repeatedly (typically 5-10 times) at slightly different angles until the indicator light confirms successful registration (e.g., a green light or specific beep pattern).
4. Repeat for additional fingerprints as desired. The safe supports multiple fingerprints.
5. Test registered fingerprints with the door open before closing.



Figure 1: Safe opening methods including emergency keys, digital keypad, and biometric fingerprint.



Figure 2: Fingerprint registration process and sensor technology.

4.4 Mounting the Safe

The safe features pre-drilled holes for secure mounting. Use the included hardware to attach the safe to a flat surface such as a shelf, closet floor, or cupboard.

1. Choose a secure and discreet location for mounting.
2. Position the safe and mark the locations for the pre-drilled holes.
3. Drill pilot holes if necessary, ensuring they are appropriate for the mounting hardware.
4. Secure the safe using the provided screws and anchors.

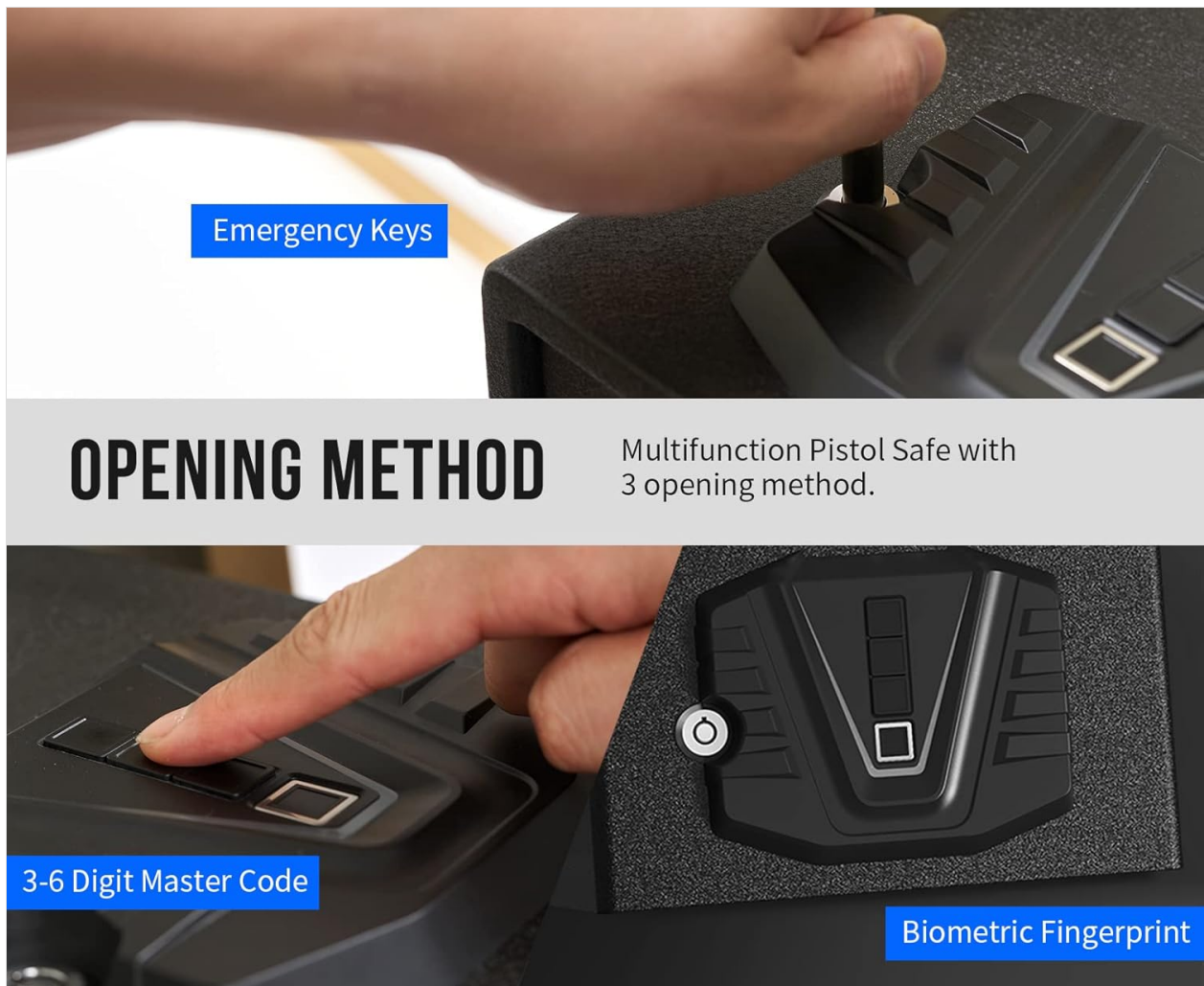


Figure 3: Internal features including removable shelf and pre-drilled mounting holes.

5. OPERATING THE SAFE

5.1 Opening with Biometric Fingerprint

1. Place a registered finger firmly on the fingerprint sensor.
2. If recognized, the safe door will pop open rapidly.

5.2 Opening with Digital Keypad

1. Enter your 3-6 digit code on the keypad.
2. Press the '#' or 'ENTER' button.
3. If the code is correct, the safe door will pop open rapidly.

5.3 Opening with Emergency Keys

In case of battery failure or forgotten codes/fingerprints, use the emergency keys.

1. Locate the emergency keyhole, usually concealed near the keypad.
2. Insert one of the emergency keys and turn it to unlock the safe.



Figure 4: Quick access via biometric fingerprint.



Figure 5: Interior view of the safe with contents.

6. MAINTENANCE

6.1 Battery Replacement

The safe features a low battery warning indicator. When the red LED flashes or the safe emits a specific beep pattern during operation, replace the batteries promptly.

1. Open the safe using a valid access method (code, fingerprint, or emergency key).
2. Locate the battery compartment.
3. Remove old batteries and insert new ones, ensuring correct polarity.
4. Close the battery compartment.

6.2 Cleaning

- Wipe the exterior of the safe with a soft, dry cloth.
- Keep the fingerprint sensor and keypad free from dust, dirt, and moisture to ensure optimal performance.

7. TROUBLESHOOTING

Problem	Possible Cause	Solution
Safe does not open with code/fingerprint.	Low batteries, incorrect code/fingerprint, sensor obstruction.	Replace batteries. Re-enter code carefully. Clean fingerprint sensor. Try emergency key.
Alarm sounds during operation.	Invalid code entered multiple times.	Enter correct code or use fingerprint/emergency key. The alarm will typically reset after a valid entry or a short period.
Fingerprint registration fails.	Finger not placed correctly, sensor dirty, fingerprint memory full.	Ensure finger covers the sensor completely. Clean sensor. If the light flashes RED 5 times with 10 beeps, the fingerprint storage capacity is full; consider deleting old fingerprints if supported by the model (refer to advanced settings if available).
Safe is unresponsive.	Completely drained batteries.	Use emergency keys to open the safe and replace batteries immediately.



Figure 6: LED indicators for status and warnings.

8. SPECIFICATIONS

Feature	Detail
Brand	RPNB
Model Name	RP2002
Product Dimensions (D x W x H)	9.84" x 11.02" x 8.07"
Item Weight	5 Kilograms (11.02 lbs)
Capacity	Approximately 10.8 Pounds (internal volume)
Lock Type	Combination (Digital Keypad), Biometric (Fingerprint), Key
Color	Black
Material	Carbon Steel
Special Feature	Fingerprint Sensor
Mounting Type	Wall Mount (via pre-drilled holes)
Alarm	Anti-theft (for invalid code attempts)

Feature	Detail
Water Resistance Level	Not Water Resistant
UPC	634769855009

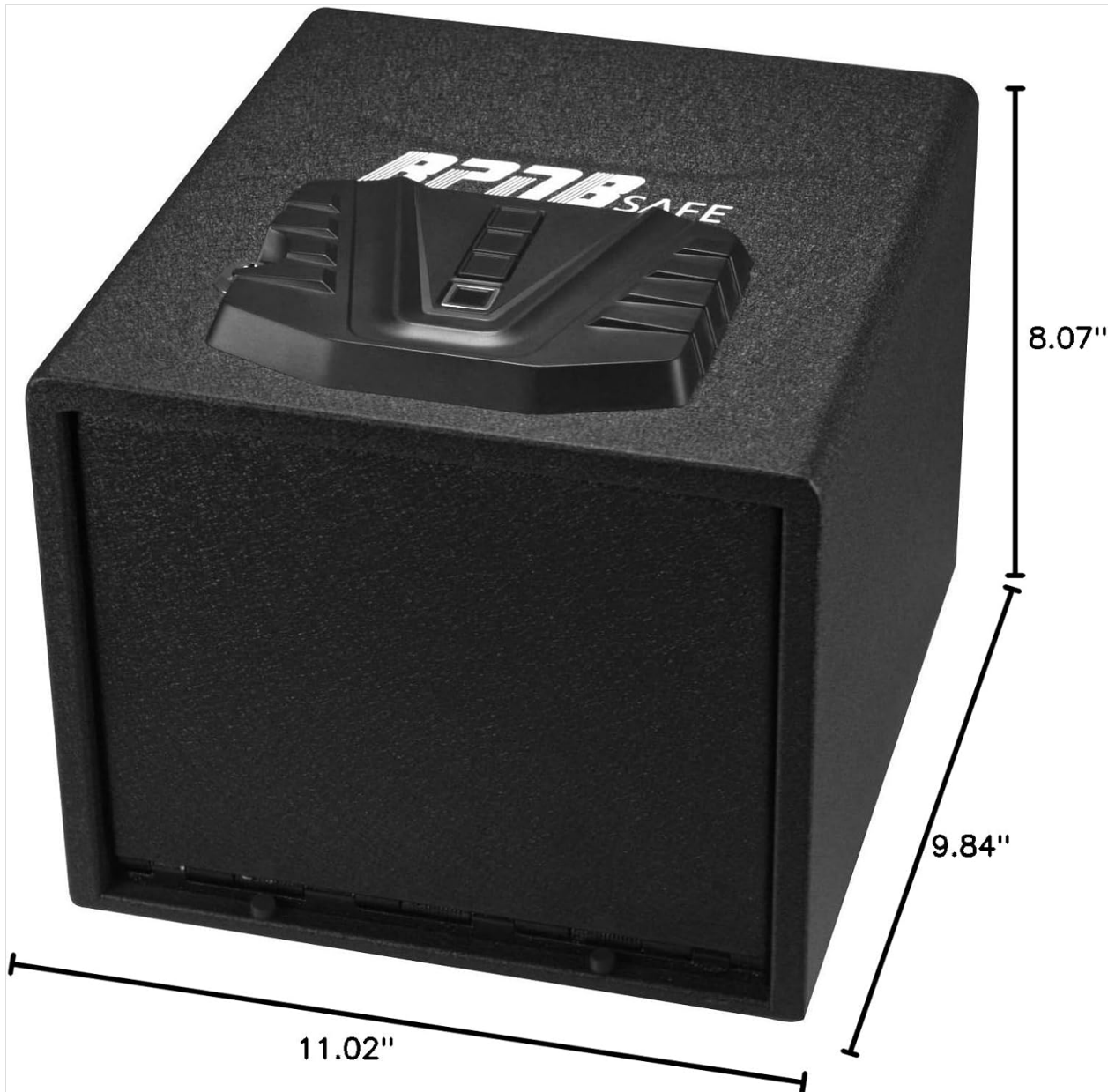


Figure 7: External dimensions of the RPNB Model RP2002 Safe.

9. WARRANTY AND SUPPORT




9.1 Warranty Information

Warranty details for the RPNB Model RP2002 Gun Security Safe are typically provided with your purchase documentation. Please retain your proof of purchase for warranty claims. For specific warranty terms and conditions, refer to the information included in your product packaging or contact RPNB customer service.

9.2 Customer Support

If you encounter any questions, difficulties, or require assistance with your RPNB safe, please contact RPNB customer support. Contact information can usually be found on the RPNB official website or within your product packaging.

Related Documents

	<p>RPNB RP2005 Multifunction Pistol Safe Instruction Manual - Setup and Operation Guide</p> <p>Comprehensive instruction manual for the RPNB RP2005 Multifunction Pistol Safe. Learn how to install batteries, program master codes and fingerprints, delete fingerprints, use silence mode, secure the safe, and understand warranty terms.</p>
	<p>RPNB RPESA Series Electronic Security Home Safe Instruction Manual</p> <p>Comprehensive instruction manual for RPNB RPESA Series electronic security home safes, covering setup, operation, security features, and customer support. Includes details on battery installation, master code programming, backup key usage, and mounting instructions.</p>
	<p>RPNB RPHS Series Smart Touchscreen Home Safe: Instruction Manual & User Guide</p> <p>Comprehensive instruction manual for the RPNB RPHS Series Smart Touchscreen Home Safe. Learn about setup, programming, security features, and troubleshooting for RPNB RPHS 45 and RPHS 60 models.</p>
	<p>RPNB Electronic Home Safe Instruction Manual - RP20ESA, RP23ESA, RP25ESA, RP36ESA, RP42ESA, RP50ESA</p> <p>Comprehensive instruction manual for RPNB electronic home safes, covering setup, operation, security features, and warranty for RP20ESA, RP23ESA, RP25ESA, RP36ESA, RP42ESA, and RP50ESA models.</p>

Documents - RPNB – RP2002



[pdf] User Manual

RPNB Safes SAFESandMORE RP2002 Pistol Safe Instruction Manual v 1707223427 cdn shopify s files 1 0607 3021 2512 |||

...

lang: score:36 filesize: 1.97 M page_count: 11 document date: 0000-00-00

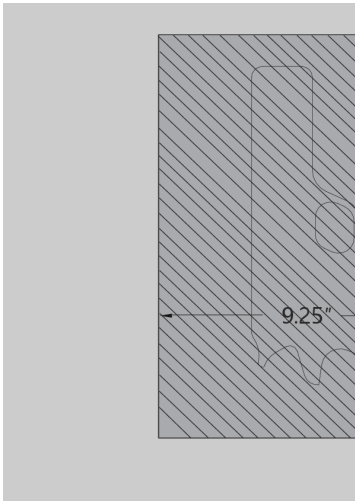


[pdf] User Manual

RP2002Ver 1 01 RPNB Quick Access Biometric Pistol Safe with Electronic Lock RP2002 Swift and Secure Firearm Storage Armadillo Safes@rp2002 manualcdn shopify s files 2100 5227 rp2002 manual v 1692200371 DownloadPISTOL SAFE SAFERPNB Safes@cdn 0709 9026 6684 1679294981cdn ||| |||

...

lang: score:20 filesize: 665.73 K page_count: 16 document date: 2020-09-17

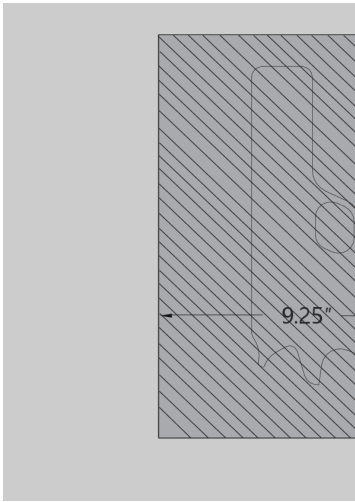


[\[pdf\]](#)

2002 RPNB RP2002 Printable Template Quick Access Biometric Pistol Safe with Electronic Lock and Vault Store rp2002 v 1683151505 cdn shopify s files 1 1147 6518 |||

9.25 9.44 ...

lang: **score:15** filesize: 846.29 K page_count: 2 document date: 2020-09-15



[\[pdf\]](#)

2002 RPNB Quick Access Biometric Pistol Safe with Electronic Lock RP2002 Swift and Secure Firearm Storage Armadillo Safes@rp2002cdn shopify s files 1 2100 5227 rp2002 v 1692200369 DownloadPISTOL SAFE SAFERPBNB Safes@cdn 0709 9026 6684 1679294975cdn ||| ||| 9.25 9.44

9.25 9.44 ...

lang: **score:13** filesize: 846.29 K page_count: 2 document date: 2020-09-15