

Lepro PR904116-RGB-WP-EU

Lepro Smart LED Strip Light 5m RGB IP65 Waterproof User Manual

Model: PR904116-RGB-WP-EU

1. INTRODUCTION

Thank you for choosing the Lepro Smart LED Strip Light. This manual provides essential information for the safe and efficient use of your new LED strip light. Please read these instructions carefully before installation and operation, and retain them for future reference.

2. SAFETY INFORMATION

- Ensure the power supply is disconnected before installation or maintenance.
- The operating voltage is 12V. Use only the provided power adapter.
- This product is IP65 waterproof, suitable for both indoor and outdoor use. However, the power adapter and controller are not waterproof and must be protected from moisture.
- Do not bend the LED strip sharply or apply excessive force, as this may damage the circuit.
- Keep out of reach of children.
- The LED strip is designed with short-circuit protection for enhanced safety.
- Avoid direct eye exposure to the light source for prolonged periods.

3. PACKAGE CONTENTS

Verify that all components are present in the package:

- 5m RGB IP65 Waterproof LED Strip
- WiFi Controller
- Power Adapter (European Adapter 12V 1.5A)
- Remote Control



Image 3.1: Overview of the Lepre Smart LED Strip Light and its included components, such as the LED strip reel, WiFi controller, and power adapter.

4. PRODUCT FEATURES

- **Smart Control:** Connects via WiFi (2.4 GHz only) for stable control.
- **Voice Control:** Compatible with Amazon Alexa and Google Assistant, no additional hub required.
- **App Functionality:** Features include countdown, automatic execution, timer function for preset scenarios, and various scene modes.
- **Dimmable RGB:** Offers a wide range of colors and adjustable brightness.
- **IP65 Waterproof:** Designed for versatile indoor and outdoor decoration.
- **High Brightness:** Equipped with 30 LEDs per meter for enhanced illumination.
- **Safe to Touch:** Operates at a low 12V, ensuring minimal heat and safety.

IP65 Waterproof

Suitable for indoor and outdoor decoration needs

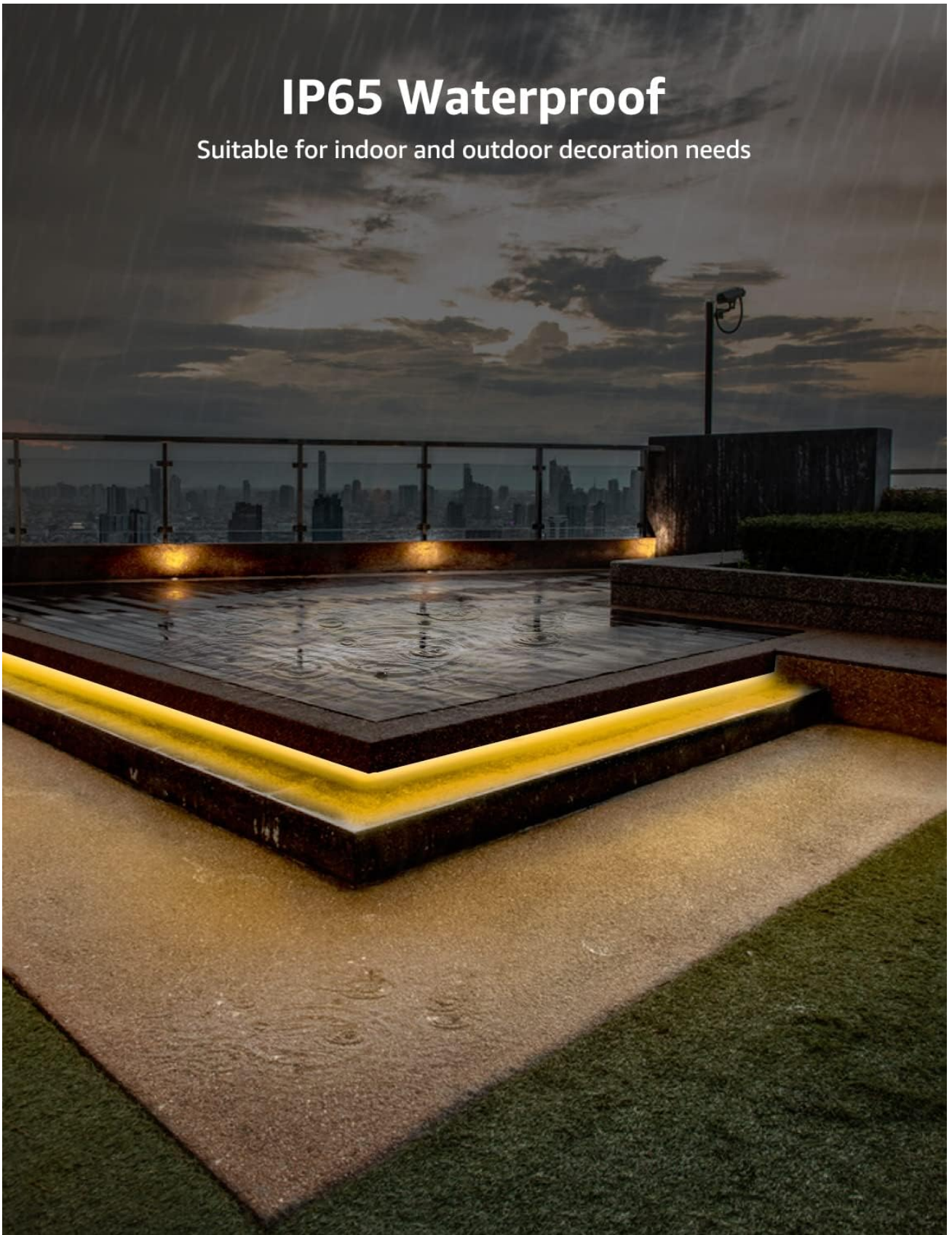
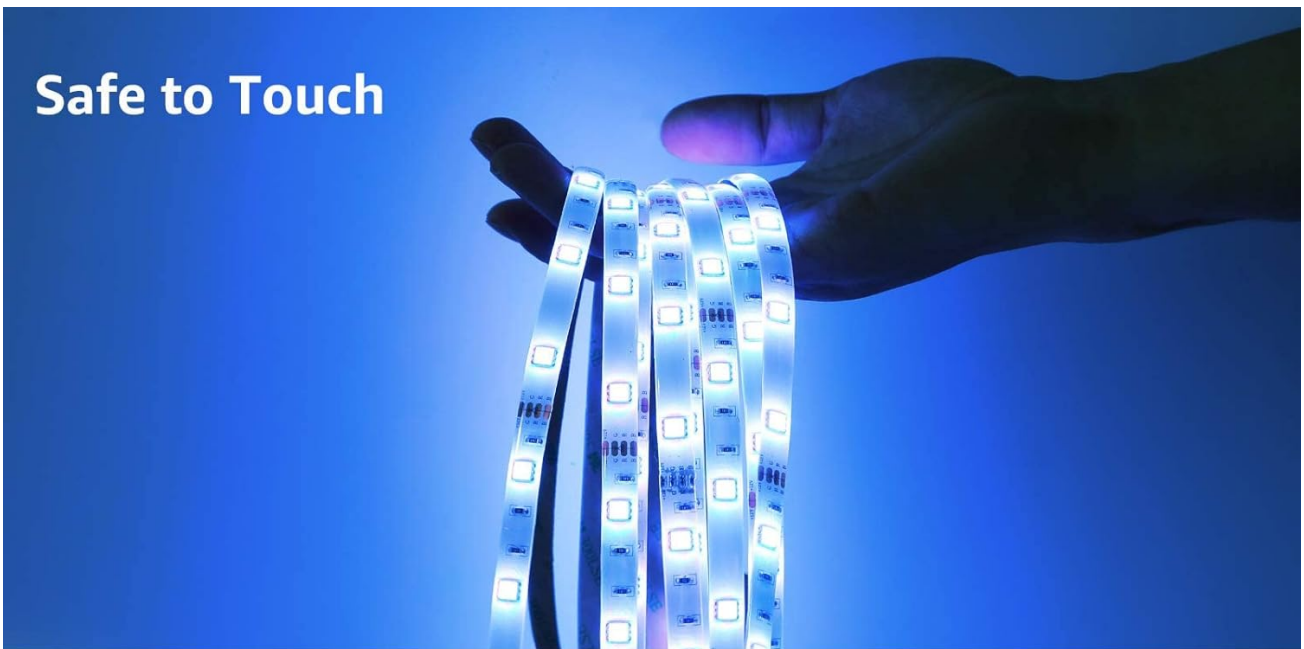


Image 4.1: The IP65 waterproof LED strip installed in an outdoor setting, demonstrating its suitability for various environments.

Safe to Touch



Waterproof IP65



Image 4.2: Top image shows a hand safely holding the illuminated LED strip. Bottom image provides a close-up view of the IP65 waterproof coating on the LED strip.

5. INSTALLATION GUIDE

1. **Clean the Surface:** Ensure the installation surface is clean, dry, and smooth.
2. **Measure and Cut (Optional):** If necessary, measure the desired length and cut the LED strip only at the designated cutting marks (usually indicated by a scissor icon or copper pads).
3. **Peel and Stick:** Remove the adhesive backing from the LED strip and firmly press it onto the desired surface.
4. **Connect Components:** Connect the LED strip to the WiFi controller, and then connect the controller to the power adapter.
5. **Plug In:** Plug the power adapter into a standard electrical outlet.

6. OPERATING INSTRUCTIONS

6.1 Basic Control with Controller Button

After plugging in the strip, you can use the physical button on the controller to:

- Turn the lights ON/OFF.
- Cycle through different scene modes.
- Reset the device (usually by holding the button for several seconds).

6.2 Smart Control via Lepro LampUX App

For full functionality, download the "Lepro LampUX" app from your smartphone's app store.

1. **Download App:** Search for "Lepro LampUX" and install it.
2. **Register/Log In:** Create an account or log in.
3. **Add Device:** Follow the in-app instructions to add your LED strip light. Ensure your phone is connected to a 2.4 GHz WiFi network during setup.
4. **Control:** Once connected, you can control power, color, brightness, set timers, schedules, and customize scene modes directly from the app.

Control from Anywhere via Lepro Lampux APP



Image 6.1: A smartphone screen showing the Lepro LampUX app interface, including a color wheel for light customization and options for smart control. The image also depicts a modern home with LED strip lighting.

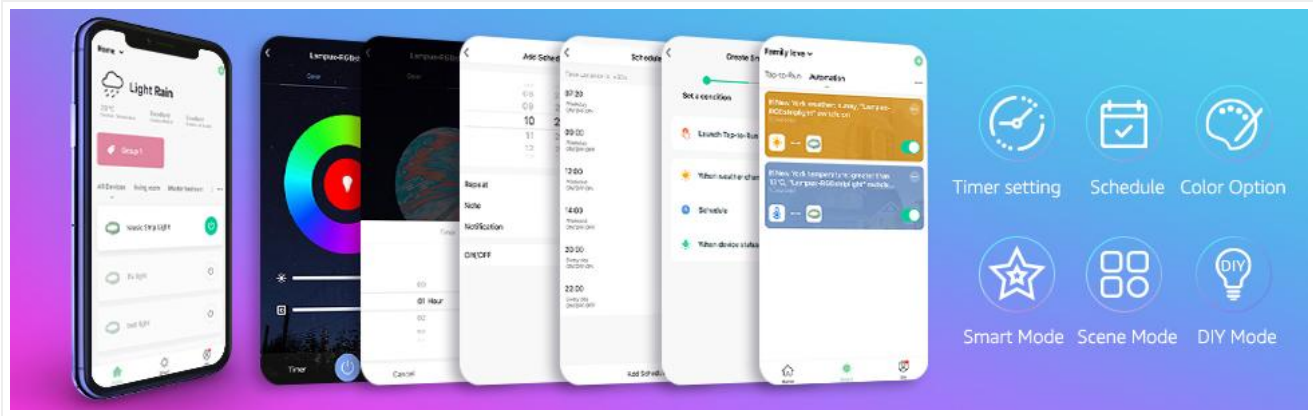


Image 6.2: A collage of smartphone screens illustrating various features of the Lepro LampUX app, such as timer settings, scheduling, color options, smart modes, scene modes, and DIY customization.

6.3 Voice Control with Alexa/Google Assistant

To enable voice control, link your Lepro LampUX account with Amazon Alexa or Google Assistant:

1. **Open Smart Assistant App:** Open the Amazon Alexa or Google Home app on your smartphone.
2. **Enable Skill/Action:** Search for the "LE Lampux" skill (for Alexa) or action (for Google Assistant) and enable it.
3. **Link Account:** Follow the prompts to link your Lepro LampUX account.
4. **Discover Devices:** Once linked, ask your smart assistant to discover new devices.
5. **Voice Commands:** You can now use voice commands such as "Alexa, turn on the bedroom light" or "Hey Google, change the strip light to purple."

One Click to Link Alexa

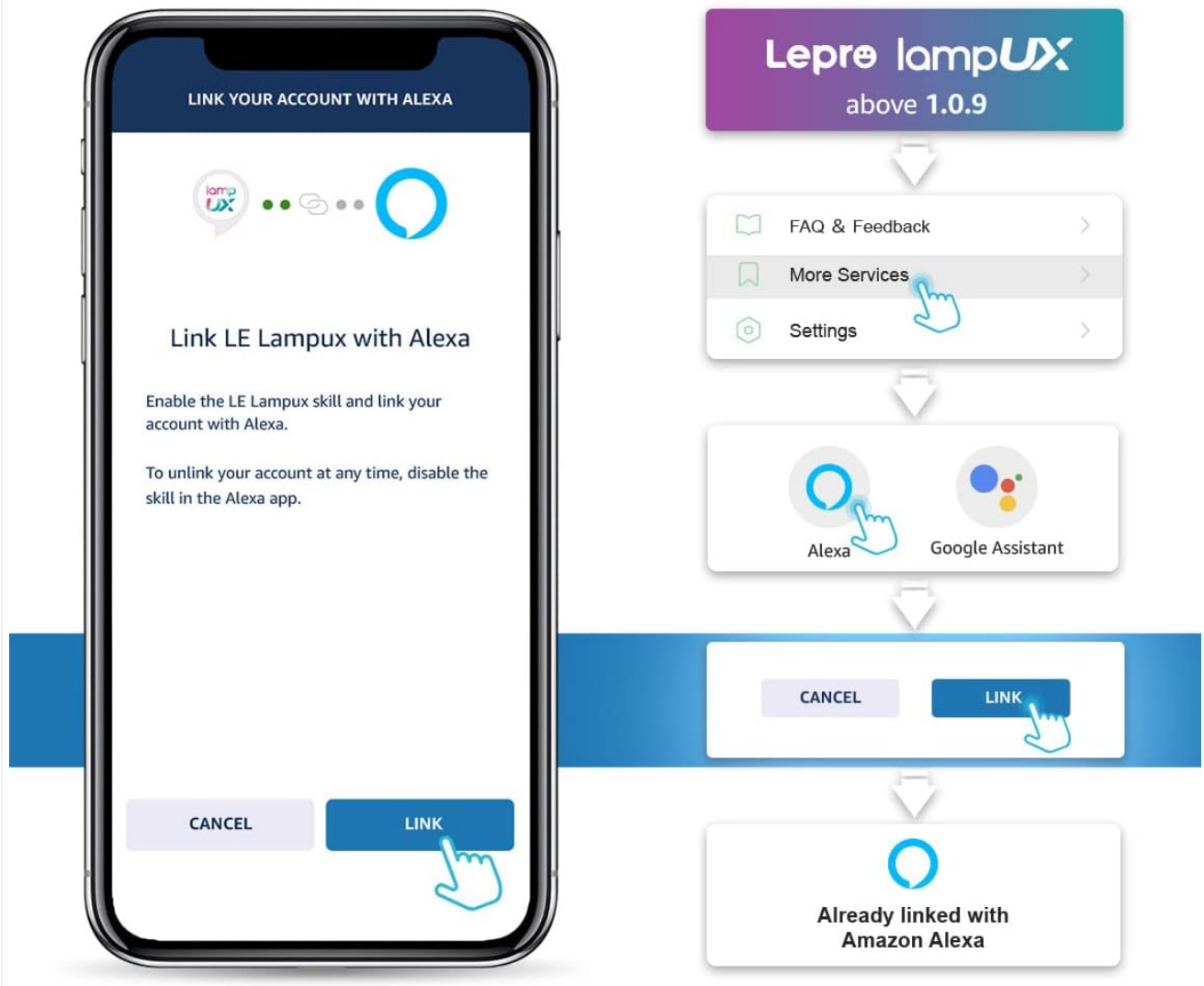


Image 6.3: A visual guide on a smartphone screen demonstrating the process of linking the Lepre LampUX app with Amazon Alexa, showing the steps to enable the skill and connect accounts.



Image 6.4: A family enjoying LED strip lighting in their living room, with smart speakers visible, illustrating the convenience of voice

control with commands like "Alexa, change the strip light to purple."

7. MAINTENANCE

- **Cleaning:** Gently wipe the LED strip with a soft, dry cloth. Do not use abrasive cleaners or solvents.
- **Inspection:** Periodically check the strip and connections for any signs of damage or wear.
- **Storage:** If storing the strip for an extended period, ensure it is clean, dry, and coiled loosely to prevent damage.

8. TROUBLESHOOTING

| Problem | Possible Cause | Solution |
|---------------------------------------|---|---|
| LED strip does not light up. | No power, loose connection, faulty adapter. | Check power outlet, ensure all connections are secure, try a different outlet. |
| Cannot connect to WiFi. | Incorrect WiFi band (not 2.4 GHz), incorrect password, too far from router. | Ensure your router is broadcasting a 2.4 GHz signal. Verify WiFi password. Move the strip closer to the router. Reset the controller and try again. |
| Voice control not working. | Skill/Action not enabled, account not linked, incorrect commands. | Check if the "LE Lampux" skill/action is enabled and your account is linked in the Alexa/Google Home app. Use precise commands. |
| Colors are inconsistent or incorrect. | Damaged section of the strip, connection issue. | Inspect the strip for physical damage. Ensure connections are firm. |

9. SPECIFICATIONS


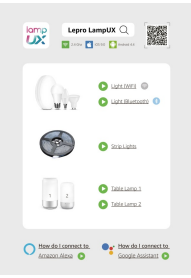


| Attribute | Detail |
|--------------------|---------------------------------|
| Brand | Lepro |
| Model Number | PR904116-RGB-WP-EU |
| Product Dimensions | 16.5 x 16.5 x 6.5 cm (packaged) |
| Item Weight | 320 grams |
| Length | 5 meters |
| Color | RGB |
| Waterproof Rating | IP65 (LED Strip only) |
| Voltage | 12 Volts |
| Power | 24 Watts |
| Bulb Type | LED |
| Connectivity | WiFi (2.4 GHz only) |

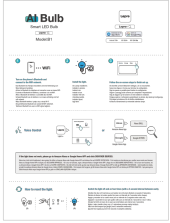
| Attribute | Detail |
|---------------------|---|
| Compatibility | Amazon Alexa, Google Assistant |
| Included Components | LED Strip, WiFi Controller, Remote Control, Power Adapter |

10. WARRANTY AND SUPPORT

For warranty information or technical support, please refer to the documentation included with your purchase or visit the official Lepro website. Contact details for customer service are typically available on the product packaging or the brand's online support page.

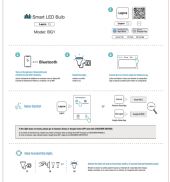
Related Documents - PR904116-RGB-WP-EU

| | |
|---|---|
|  | <p>Lepro S1 Smart LED Strip Light: Installation, Features, and Safety Guide</p> <p>Comprehensive guide for the Lepro S1 Smart LED Strip Light, covering installation, app connection, voice control integration, safety precautions, technical specifications, and warranty information.</p> |
|  | <p>Lepro LampUX: Smart Lighting App User Guide</p> <p>A comprehensive guide to setting up and using the Lepro LampUX app for controlling smart lighting devices, including Wi-Fi and Bluetooth bulbs, strip lights, and table lamps, with integration for Amazon Alexa and Google Assistant.</p> |
|  | <p>Lepro BR2 Smart LED Bulb Setup and Voice Control Guide</p> <p>Comprehensive guide to setting up your Lepro BR2 Smart LED Bulb. Learn how to connect via Bluetooth and WiFi, integrate with Amazon Alexa and Google Assistant, and troubleshoot common issues. Includes technical specifications and regulatory compliance information.</p> |
|  | <p>Lepro R2 Smart LED Downlight Installation and User Guide</p> <p>Comprehensive guide for installing and using the Lepro R2 Smart LED Downlight, covering app connection, voice control setup, mounting, and safety information.</p> |



[Lepro AI Smart Bulb B1: Quick Start Guide and Setup](#)

Learn how to set up and connect your Lepro AI Smart LED Bulb (Model B1) to your WiFi network, integrate it with voice assistants like Alexa and Google Assistant, and troubleshoot common issues. Includes reset instructions.



[Lepro BG1 Smart LED Bulb: Setup Guide and Technical Specifications](#)

Comprehensive guide to setting up your Lepro BG1 Smart LED Bulb, including Wi-Fi and Bluetooth connection, voice assistant integration with Alexa and Google, reset instructions, technical specifications, and regulatory compliance information.