

Scalextric C1420T

Scalextric Speed Supreme GT vs. LMP 1:32 Slot Car Race Track Set C1420T Instruction Manual

Model: C1420T | Brand: Scalextric

1. INTRODUCTION

This manual provides essential information for the assembly, operation, and maintenance of your Scalextric Speed Supreme GT vs. LMP 1:32 Slot Car Race Track Set, model C1420T. Please read these instructions carefully before use to ensure safe and optimal performance.

The Scalextric Speed Supreme set features two endurance racers, an LMP and a GT car, designed for 1:32 scale slot car racing. The system includes lightweight cars with sticky tires and magnatraction magnets, along with adjustable hand controllers.



Image 1.1: The Scalextric Speed Supreme GT vs. LMP 1:32 Slot Car Race Track Set C1420T packaging.

2. SAFETY INFORMATION

WARNING: This product contains chemicals known to the State of California to cause cancer and birth defects or other reproductive harm. For more information, visit www.P65Warnings.ca.gov.

Recommended Age: This product is recommended for ages 16 years and up. Younger users should be supervised by an adult.



Image 2.1: Age recommendation for Scalextric products. Note: The product listing states 16 years and up, while this image indicates 5+.

- Always ensure the power supply is disconnected before assembly, disassembly, or maintenance.
- Keep small parts away from young children to prevent choking hazards.
- Do not operate the set near water or in damp conditions.
- Use only the power adapter supplied with the set.

3. PACKAGE CONTENTS

Verify that all components are present in your Scalextric Speed Supreme set:

- 1x Scalextric Speed Supreme Race Track Set (includes track sections for 14' 4" layout)
- 2x Slot Cars (1x GT car, 1x LMP car)
- 2x Hand Controllers with power selector
- 1x Power Pack
- Additional accessories (e.g., barriers, track supports, spare braids)

The set includes 14 feet 4 inches of track, allowing for various layout configurations.

4. SETUP

1. **Choose a Location:** Select a flat, stable surface for your track layout. Ensure sufficient space for the 14' 4" track length.
2. **Assemble the Track:** Connect the track sections by aligning the connectors and pressing them firmly together. The track is designed for easy connection, allowing for quick layout changes. Refer to the included track layout guide for suggested configurations.
3. **Connect Power Base:** Integrate the power base track section into your layout.
4. **Connect Hand Controllers:** Plug the hand controllers into the designated ports on the power base.
5. **Connect Power Pack:** Plug the power pack into the power base, then connect it to a suitable wall outlet.
6. **Place Cars on Track:** Carefully place the GT and LMP slot cars onto their respective lanes, ensuring the guide flags are correctly seated in the track slot and the braids make contact with the power rails.

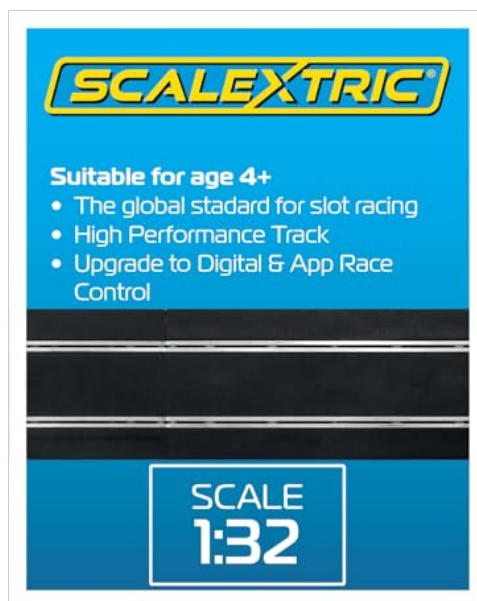


Image 4.1: Illustration of Scalextric 1:32 scale track, suitable for ages 4+ (as per image, product listing states 16+).

5. OPERATING INSTRUCTIONS

The Scalextric Speed Supreme set is designed for engaging slot car racing with features to accommodate various skill levels.

5.1 Hand Controller Operation

- Each hand controller features a four-position selector switch. This switch allows adjustment of the car's maximum speed.
- **Speed Settings:**
 - **Slow Speed:** Ideal for beginners to learn control and prevent cars from deslotting.

- **Fast Speed:** Provides a more challenging race experience for experienced drivers.
- To accelerate, gently press the trigger on the hand controller. Release the trigger to slow down or brake.

5.2 Car Features

- **Super Resistant Cars:** The included GT and LMP cars are built for durability, designed to withstand impacts and remain on the track.
- **Magnatraction:** Integrated magnets in the cars help them adhere to the track, improving stability and reducing deslotting, especially at higher speeds.
- **Easy Change Pick-ups:** The cars are equipped with easy-to-replace braids (pick-ups) for consistent electrical contact with the track.

6. MAINTENANCE

Regular maintenance ensures the longevity and optimal performance of your Scalextric set.

- **Track Cleaning:** Periodically wipe track rails with a clean, lint-free cloth to remove dust and debris. Avoid abrasive cleaners.
- **Car Braids:** The braids (electrical contacts) underneath the cars will wear out over time. Inspect them regularly. If they appear frayed or flattened, replace them with new ones. Replacement braids are readily available.
- **Tire Cleaning:** Clean car tires with a damp cloth to remove dust and maintain grip.
- **Motor Lubrication:** Consult Scalextric's official resources for specific lubrication recommendations for car motors, if necessary.

7. TROUBLESHOOTING

Problem	Possible Cause	Solution
Car not moving or intermittent power	<ul style="list-style-type: none"> • Loose track connection • Worn or dirty car braids • Dirty track rails • Controller not fully plugged in • Power pack issue 	<ul style="list-style-type: none"> • Check all track connections for firmness. • Inspect and clean/replace car braids. • Clean track rails. • Ensure controller is securely plugged into power base. • Verify power pack is connected and receiving power.
Car deslots frequently	<ul style="list-style-type: none"> • Excessive speed for corner • Dirty tires • Worn magnatraction magnet • Track not flat 	<ul style="list-style-type: none"> • Reduce speed using controller or speed selector. • Clean car tires. • Check magnet for damage (rare). • Ensure track is on a flat, stable surface.
Controller not responding	<ul style="list-style-type: none"> • Loose connection • Faulty controller 	<ul style="list-style-type: none"> • Ensure controller is fully plugged in. • Test with another controller if available. Contact support if faulty.

8. SPECIFICATIONS

- **Model Number:** C1420T
- **Brand:** Scalextric
- **Scale:** 1:32
- **Track Length:** 14 feet 4 inches (437 cm)
- **Product Dimensions:** 24 x 14 x 4 inches (packaged)
- **Item Weight:** 1.6 ounces (packaged)
- **Recommended Age:** 16 years and up (Manufacturer recommended)
- **Release Date:** August 10, 2020
- **Special Features:** Easy change pick-ups, Magnatraction, Super tough cars, Adjustable hand controller speed settings.

9. WARRANTY AND SUPPORT




For warranty information and customer support, please refer to the official Scalextric website or contact their customer service department. Keep your proof of purchase for any warranty claims.

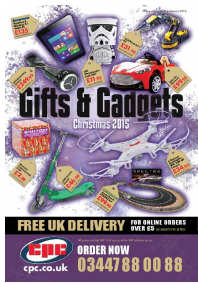
Online Resources: Visit the official Scalextric website for additional product information, FAQs, and spare parts.

Contact Information: Refer to the product packaging or Scalextric's official website for current customer support contact details.

© 2025 Scalextric. All rights reserved. Information subject to change without notice.

Related Documents - C1420T

	<p>Show Us Ya Slotz Racing Calendar - October 2025 Events</p> <p>Official racing calendar and event schedule for Show Us Ya Slotz, featuring various slot car classes including DTM Sedan, Indy Cars, and more for October 2025.</p>
	<p>SCX Advance GT3 Series Instruction Manual</p> <p>Detailed instruction manual for the SCX Advance GT3 Series slot car racing set, covering track assembly, component connections, and car features. Includes guidance for setting up the racing circuit.</p>
	<p>Logitech G733 Wireless Gaming Headset & G502 Proteus Spectrum Gaming Mouse User Guides</p> <p>Official user manuals and setup guides for Logitech G733 Wireless Gaming Headset and Logitech G502 Proteus Spectrum Gaming Mouse, covering setup, features, customization, and troubleshooting.</p>



[Gifts & Gadgets Christmas 2015 Catalog - Explore the Latest Toys, Electronics, and Hobbies](#)

Discover a wide selection of gifts and gadgets for Christmas 2015, featuring the latest toys, drones, RC cars, model kits, electronics, puzzles, games, and more from top brands. Shop now for holiday fun.