

klarus EU-HM1

Klarus HM1 Headlamp User Manual

Model: HM1 (EU-HM1) | Brand: Klarus

1. INTRODUCTION AND OVERVIEW

The Klarus HM1 is a versatile and durable headlamp designed for various outdoor activities and professional applications. It features a powerful 440-lumen output, extended battery life, and smart control options, including a motion sensor for hands-free operation. Built with military-grade durability, it is IPX6 waterproof and highly resistant to shocks and drops, ensuring reliable performance in challenging environments.



Figure 1: Klarus HM1 Headlamp, showcasing its compact design and integrated strap.

Key features include:

- **Extended Battery Life:** Up to 70 hours on low brightness, 8 hours on medium.
- **Rapid Charging:** Fully charges in approximately 2.5 hours via USB-C.
- **Smart One-Touch Control:** Simplifies operation with a 3-second delay shutdown and gesture sensing.

- **Military-Grade Durability:** IPX6 waterproof rating and 2-meter drop resistance.
- **Ergonomic Comfort:** Lightweight (85 grams), 60° adjustable angle, and breathable strap for all-day wear.

2. SETUP

2.1 Charging the Headlamp

Before first use, fully charge the Klarus HM1 headlamp. The device features USB-C fast charging for convenience.

1. Locate the USB-C charging port on the side of the headlamp.
2. Connect the provided USB-C charging cable to the headlamp and a compatible USB power source (e.g., wall adapter, power bank, computer USB port).
3. The battery indicator light will show charging status:
 - Blue Light: 30%-100% charged
 - Red Light: 5%-30% charged
 - Red Light Flashing: 0-5% charged
4. A full charge typically takes approximately 2.5 hours. Disconnect the cable once charging is complete.

Charge for One Hour, Use for One Night

USB C Fast Charging and Long Life



Battery Indicator

Blue Light: 30%-100%

Red Light: 5%-30%

Red Light Flashing: 0-5%

Figure 2: The Klarus HM1 headlamp connected to a USB-C charging cable, illustrating the charging process and battery indicator.

2.2 Wearing the Headlamp

The headlamp is designed for comfortable and secure wear.

- Adjust the elastic headband using the adjustable loop buckle to fit snugly around your head.
- The headlamp unit can be tilted up or down by 60 degrees to direct the light precisely where needed.

Lightweight & ZERO Stress



Figure 3: The lightweight design of the Klarus HM1, highlighting the adjustable loop buckle and elastic headband for comfortable wear.

3. OPERATING INSTRUCTIONS

3.1 Power On/Off and Mode Selection

The Klarus HM1 features a smart one-touch control system for easy operation.

- **Power On:** Press the power button once to turn on the headlamp. It will default to medium brightness.
- **Mode Cycling:** While on, press the power button repeatedly to cycle through the lighting modes: Medium (Spotlight) → High (Spotlight) → Turbo (Spotlight + Floodlight) → High (Floodlight) → Low (Floodlight).
- **Power Off:** To turn off the headlamp from any mode, press and hold the power button for 3 seconds. This allows for quick shutdown without cycling through all modes.

3.2 Motion Sensor Function

The motion sensor allows for hands-free activation, useful when your hands are occupied or gloved.

- **Activate Sensor Mode:** Press the dedicated sensor button (usually indicated by a wave icon) to enable the motion sensor.
- **Hands-Free Control:** Once activated, wave your hand in front of the headlamp to turn the light on or off.
- **Deactivate Sensor Mode:** Press the sensor button again to return to manual control.



Figure 4: Illustration of the manual click operation and the smart-sensing feature for hands-free control of the Klarus HM1 headlamp.

3.3 Usage Scenarios

The Klarus HM1 is suitable for a wide range of activities:

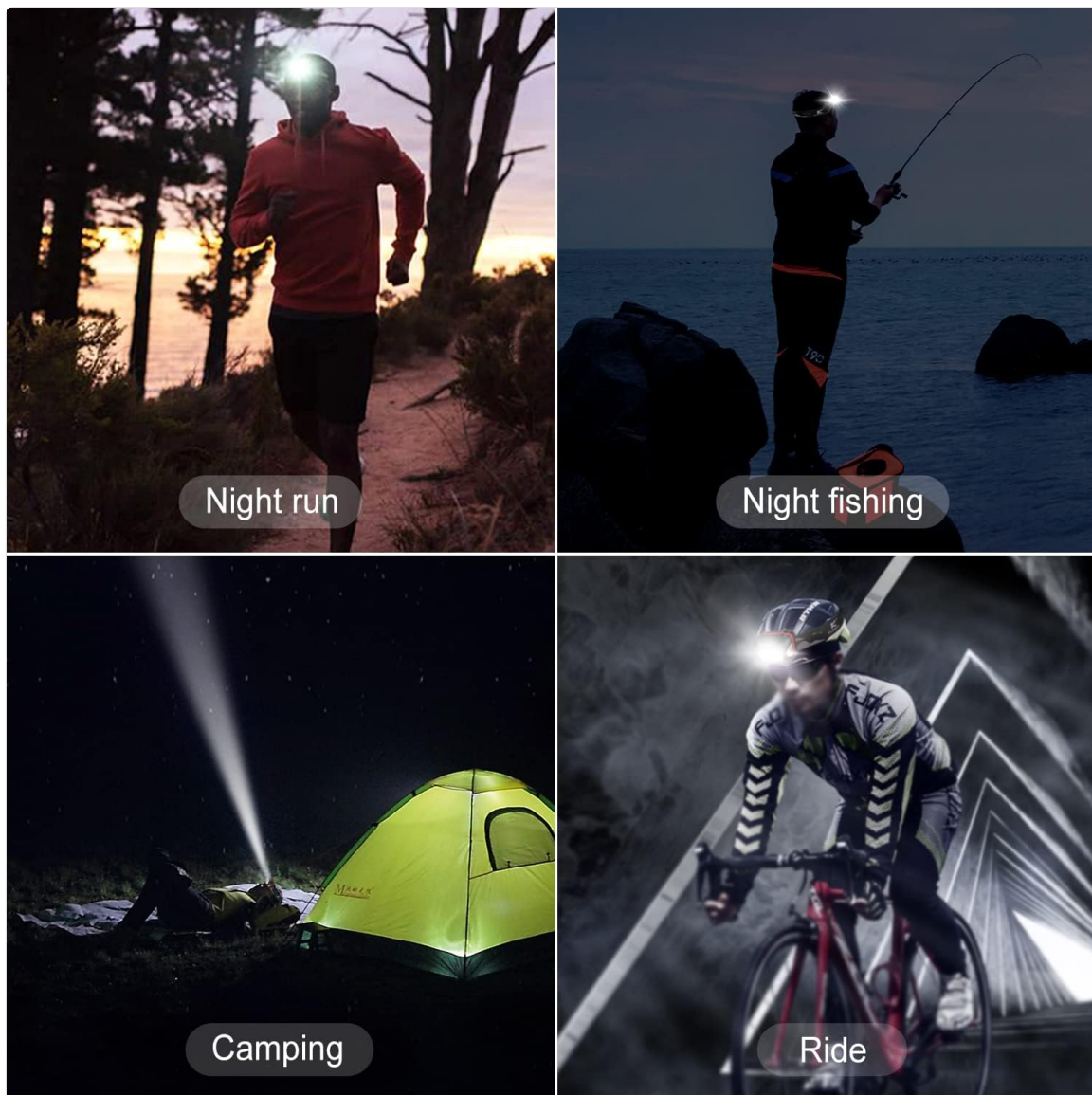


Figure 5: Examples of the Klarus HM1 headlamp in use during night running, night fishing, camping, and cycling, demonstrating its versatility.

For a visual demonstration of the headlamp's features and performance, please watch the official product video:

Your browser does not support the video tag.

Video 1: Official Klarus HM1 Long-Lasting Lightweight Headlamp demonstration, showcasing its features and use in various outdoor settings.

4. MAINTENANCE

Proper maintenance ensures the longevity and optimal performance of your Klarus HM1 headlamp.

- **Cleaning:** Wipe the headlamp body with a soft, damp cloth. Do not use abrasive cleaners or solvents. Ensure the charging port cover is securely closed to prevent water ingress.
- **Battery Care:** To maximize battery life, avoid fully depleting the battery frequently. Recharge the headlamp regularly, especially if it has been stored for an extended period.
- **Storage:** Store the headlamp in a cool, dry place away from direct sunlight and extreme

temperatures.

- **Strap Care:** The elastic headband can be hand-washed with mild soap and water if it becomes dirty. Allow it to air dry completely before reattaching to the headlamp.

5. TROUBLESHOOTING

If you encounter issues with your Klarus HM1 headlamp, refer to the following common problems and solutions:

Problem	Possible Cause	Solution
Headlamp does not turn on.	Low battery; Incorrect operation.	Charge the headlamp fully. Ensure the power button is pressed correctly (single press for on, 3-second hold for off).
Light is dim or flickers.	Low battery; Lens/LED obstruction.	Recharge the headlamp. Clean the lens surface.
Motion sensor not responding.	Sensor mode not activated; Obstruction; Environmental interference.	Ensure sensor mode is enabled (check sensor button indicator). Clear any obstructions in front of the sensor. Try in a different environment.
Headlamp not charging.	Faulty cable/adapter; Charging port issue.	Try a different USB-C cable and power adapter. Ensure the charging port is clean and free of debris.

If the problem persists after attempting these solutions, please contact Klarus customer support for further assistance.

6. SPECIFICATIONS

Detailed technical specifications for the Klarus HM1 Headlamp:

Feature	Detail
Brand	Klarus
Model Number	EU-HM1
Light Source Type	LED (American CREEXP-G3)
Brightness	440 Lumens (Max)

Feature	Detail
Power Source	Battery Powered (1 Lithium Metal battery included)
Battery Cell Composition	Lithium Polymer
Runtime	Up to 70 hours
Charging Time	Approx. 2.5 hours
Water Resistance Level	IPX6 Waterproof
Material	ABS, Rubber, Silver-plated
Item Weight	85 grams (approx. 2.46 ounces)
Product Dimensions	1.96"D x 3.54"W x 2.75"H
Light Path Distance	100 Meters
Adjustable Angle	60 degrees

7. WARRANTY AND SUPPORT

Klarus stands behind the quality of the HM1 headlamp with comprehensive support.

- **2-Year Replacement Warranty:** The product is covered by a 2-year no-questions-asked replacement policy for non-human damage.
- **30-Day Returns:** Enjoy a 30-day return period for your peace of mind.
- **24/7 Expert Support:** Klarus provides round-the-clock expert support to assist with any inquiries or issues.

Included Components: The Klarus HM1 package includes the headlamp, a portable charging cable, and a spare headband.



Figure 6: The Klarus HM1 headlamp package contents, including the headlamp unit, user manual, charging cable, and spare headband.

For warranty claims or technical support, please refer to the contact information provided in your product packaging or visit the official Klarus website.