



Manuals.plus /

› uuffoo /

› uuffoo Patio Umbrella Light with Speaker - Instruction Manual

uuffoo Modern

uuffoo Patio Umbrella Light with Speaker - Instruction Manual

Model: Modern

1. INTRODUCTION

Thank you for purchasing the uuffoo Patio Umbrella Light with Speaker. This device combines LED lighting with a Bluetooth speaker, designed for outdoor use. Please read this manual carefully before use to ensure proper operation and to maximize the product's lifespan.



Image 1.1: The uuffoo Patio Umbrella Light with Speaker in various usage scenarios.

Package Contents:

- 1 x uuffoo LED Umbrella Light with Speaker
- 1 x User Manual
- 1 x Charging Cable
- 1 x Color Box (packaging)

2. SAFETY INFORMATION

To prevent damage or injury, observe the following safety precautions:

- Do not disassemble, repair, or modify the device.
- Keep the device away from extreme temperatures, direct sunlight, and humid environments.
- Use only the provided charging cable or a certified equivalent.
- Avoid prolonged charging beyond the recommended time (4-8 hours) to prevent overheating and potential damage to the battery.
- Keep out of reach of children.
- Ensure the device is securely clamped to the umbrella pole to prevent it from falling.

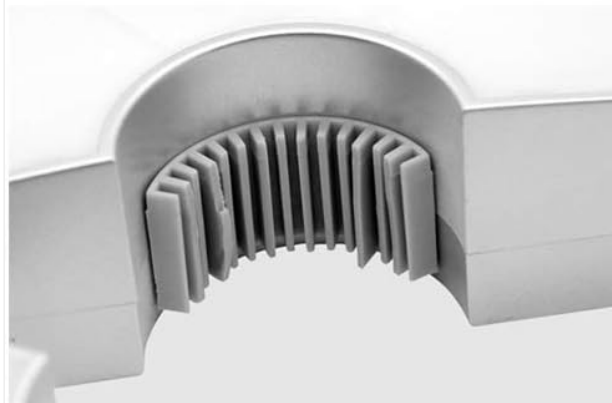
3. PRODUCT OVERVIEW

Familiarize yourself with the components and controls of your umbrella light.



RUBBER SHEATH, DAILY WATERPROOF AND DUSTPROOF, PROTECTION SWITCH BUTTON, USB INTERFACE

2 DIAGONAL SPEAKERS DESIGN,
CLEAR SOUND AND GOOD SOUND QUALITY



USED FOR HANGING IN THE TENT,
CAN BE INSTALLED ON THE SOLAR
UMBRELLA POLE

Image 3.1: Detailed view of the control panel and internal components.

ON/OFF Button: Controls power and music playback.

LED Light Button: Cycles through light modes.

USB Port: For power bank output (charging external devices).

DC 5V Port: For charging the umbrella light itself.

Speakers: Two diagonal speakers for audio output.

Clamping Mechanism: Internal adjustable clip for securing to umbrella poles.

4. SETUP

Initial Charging:

Before first use, fully charge the umbrella light. Connect the provided charging cable to the DC 5V port on the device and to a compatible USB power adapter (not included). Charging typically takes 4-8 hours. Do not overcharge.

Installation on Umbrella Pole:



Image 4.1: Umbrella light installed on a patio umbrella pole.

1. Open the umbrella light by gently separating its two halves.
2. Position the open light around the umbrella pole at the desired height.
3. Close the two halves of the light, ensuring the internal adjustable clip securely grips the pole. The wireless design requires no tools for installation.
4. Verify the light is stable and will not slide down the pole.

5. OPERATING INSTRUCTIONS

Power On/Off and Music Playback:

- **To Power On:** Long press the **ON/OFF** button until the device powers on.
- **To Power Off:** Long press the **ON/OFF** button again until the device powers off.
- **To Play/Pause Music:** Short press the **ON/OFF** button while music is playing.

LED Light Control:



Image 5.1: Various LED light color options.

- **To Change Light Mode:** Short press the **LED Light** button to cycle through modes: LED light (white), RGB light (color changing), Light off.

Bluetooth Connection:

1. Ensure the umbrella light is powered on. It will automatically enter Bluetooth pairing mode.
2. On your mobile device (smartphone, tablet, etc.), go to the Bluetooth settings.
3. Search for available devices and select "**IJOY VIBE**" to connect.
4. Once connected, you can play audio through the umbrella light's speaker.

The Bluetooth operating distance is approximately 10 meters (32.8 feet).

6. CHARGING FUNCTIONALITY

Charging the Umbrella Light:

Use the provided charging cable and connect it to the DC 5V input port. A full charge takes approximately 4-8 hours. The device features a built-in 2600mAh rechargeable lithium-ion battery.

Using as a Power Bank:

Emergency charging for cellphones or tablets



Image 6.1: Emergency charging for cellphones or tablets.

The USB port on the device functions as a power bank output (DC 5V). You can use this port to provide emergency charging for mobile phones, tablets, or other small USB-powered devices.

7. MAINTENANCE

Cleaning:

Wipe the device with a soft, damp cloth. Do not use abrasive cleaners or immerse the device in water. While the product is waterproof, it is designed for daily outdoor use and not for submersion.

Storage:

When not in use for extended periods, store the umbrella light in a cool, dry place. It is recommended to charge the battery every 3 months to maintain its health.

8. TROUBLESHOOTING

Problem	Possible Cause	Solution
Device does not power on.	Low battery.	Charge the device fully.
Cannot connect via Bluetooth.	Bluetooth not enabled on device; device too far; incorrect pairing.	Ensure Bluetooth is on. Move closer to the umbrella light. Re-attempt pairing with "IJOY VIBE".
Lights are not working.	Light mode is off or battery is low.	Short press the LED Light button to cycle modes. Charge the device.
Device slides down the umbrella pole.	Improper clamping or pole is too narrow/smooth.	Ensure the clamping mechanism is fully closed and secure. If the pole is too narrow, consider adding a non-slip material around the pole where the clamp grips.

9. SPECIFICATIONS

Model:	Modern
Light Source:	48 LED Lamp Beads
Bluetooth Version:	5.0
Bluetooth Operating Distance:	10m (32.8ft)
Frequency Response:	20HZ-20KHZ
Distortion:	≤1%
Battery:	2600mAh Rechargeable Lithium-ion
Working Time (Music Only):	Up to 6 hours
Working Time (Music & Lighting):	Up to 3 hours
Power Bank Output:	DC 5V (via USB port)
Charging Input:	DC 5V (via DC 5V port)
Material:	Acrylonitrile Butadiene Styrene (ABS)
Dimensions:	7.87"L x 7.87"W x 1.18"H
Weight:	1.23 pounds
Wattage:	3 watts
Voltage:	5 Volts

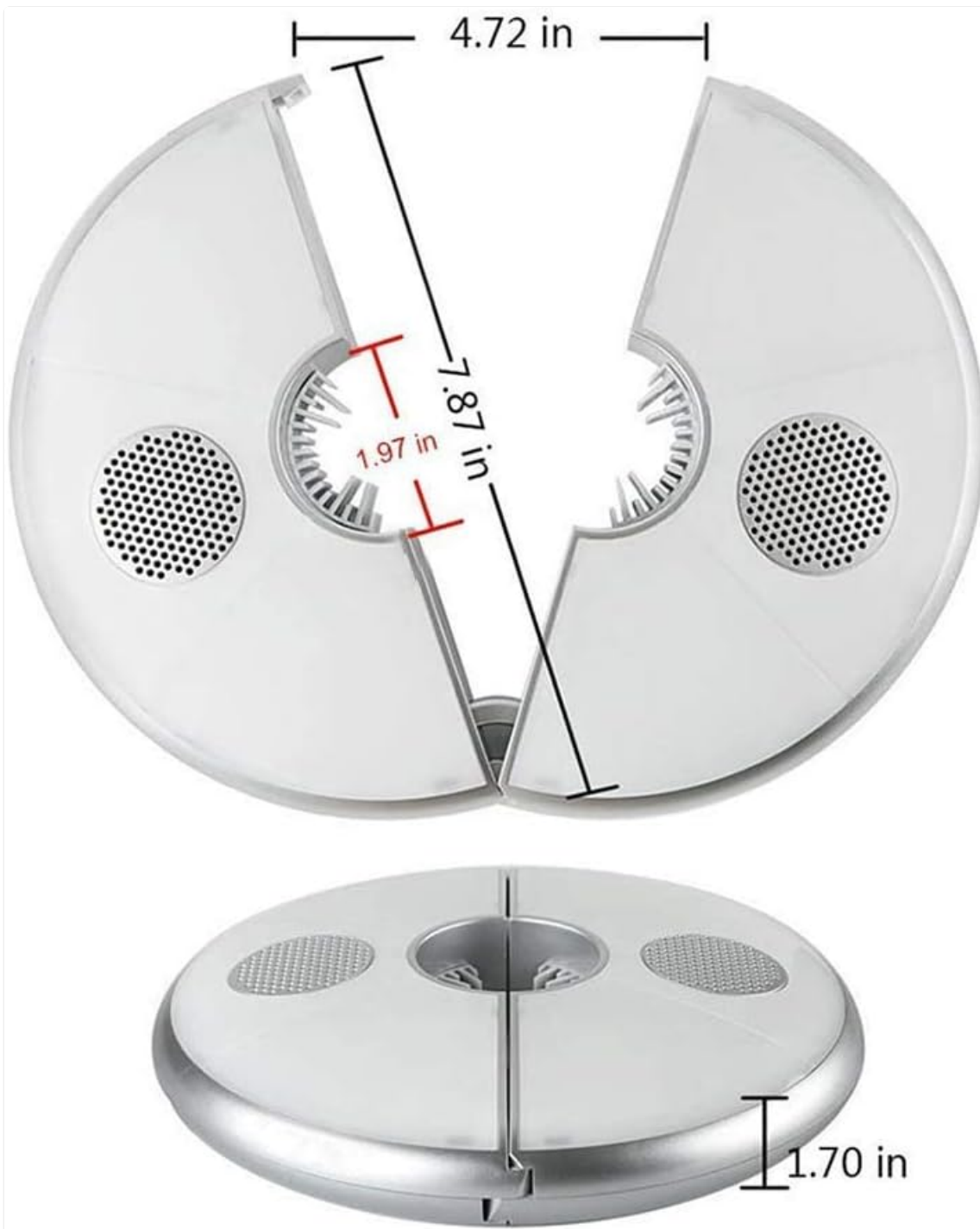


Image 9.1: Product dimensions.

10. WARRANTY AND SUPPORT

Specific warranty information for this product is not provided in the available documentation. For support or warranty inquiries, please contact the retailer or manufacturer directly using the contact information provided at the point of purchase.