

## Barrina INWT504014650Dc

# Barrina T8 LED Shop Light (4FT, 40W, 5000K) Instruction Manual

Model: INWT504014650Dc

## 1. INTRODUCTION

This manual provides detailed instructions for the safe and efficient installation, operation, and maintenance of your Barrina T8 LED Shop Light. Please read this manual thoroughly before installation and retain it for future reference.



*Image: Barrina T8 LED Shop Light, showcasing the fixture with its attached power cord and on/off switch.*

## 2. SAFETY INFORMATION

---

- Always disconnect power before installation or servicing.
- Ensure the power supply voltage is compatible with the fixture (AC100-277V).
- Do not look directly into the LED light source when illuminated.
- This product is designed for indoor use only.
- Installation should be performed by a qualified electrician if hardwiring is required.

## 3. WHAT'S IN THE BOX

---

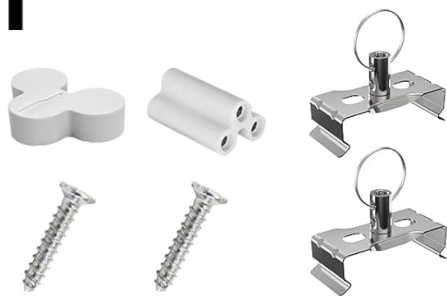
Verify that all components are present before beginning installation:

- Barrina T8 LED Light Fixture (x1)
- Reflector (x2)
- Power Cord with ON/OFF Switch (x1)
- Hardwiring Connector (x1)
- Connecting Cable (48-inch) (x1)
- Small Connector (for direct linking) (x1)
- Accessories Package (mounting clips, screws, wall anchors) (x1)
- Installation Manual (x1)

# PACKING LIST



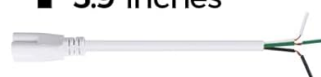
**1** PACK



**1** PCS  
59 inches



**1** PCS  
5.9 inches



**1** PCS  
48 inches (OS cord)



Image: A visual representation of all items included in the product package, laid out on a surface.

## 4. SPECIFICATIONS

Feature	Detail
Brand	Barrina
Model Number	INWT504014650Dc
Light Output	5500 Lumens
Wattage	40 Watts
Color Temperature	5000K Daylight White
Beam Angle	270 degrees
Material	Aluminum, Shell
Product Dimensions	47.1"L x 1.3"W x 1.38"H

Item Weight	1.85 Pounds
Indoor/Outdoor Usage	Indoor
Installation Type	Flush Mount, Hanging
Control Method	Touch (via ON/OFF switch on cord)



Image: Detailed dimensions (Length: 47.1 inches, Width: 1.3 inches, Height: 1.45 inches) and lumen output (5500 Lumens) of the Barrina T8 LED Shop Light.

## 5. SETUP AND INSTALLATION

The Barrina T8 LED Shop Light offers two primary installation methods: pendant/ceiling-mounted and hardwired. Always ensure power is disconnected before installation.

### 5.1 Mounting the Fixture

1. **Screw the clips:** Use the provided screws and wall anchors (if necessary) to attach the mounting clips to your desired wall or ceiling location. Ensure clips are spaced appropriately for the 47.1-inch fixture.
2. **Secure the LED fixture:** Gently push and secure the LED light fixture into the mounted clips until it

snaps firmly into place.

## 5.2 Power Connection Options

Your Barrina T8 LED Shop Light can be powered via a plug-in cord or hardwired.

### 5.2.1 Plug-in Connection

- Connect the power cord with the ON/OFF switch to one end of the LED fixture.
- Plug the power cord into a standard electrical outlet.

### 5.2.2 Hardwired Connection

- Use the provided hardwiring connector.
- Connect the Live (black), Neutral (white), and Ground (green) wires from your electrical supply to the corresponding wires on the hardwiring connector. Ensure all connections are secure and insulated.
- Connect the hardwiring connector to one end of the LED fixture.

## 5.3 Linking Multiple Fixtures

Up to 6 Barrina T8 LED Shop Lights can be linked in a series using the provided connecting cables or small direct connectors.

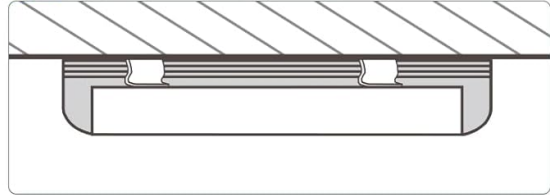
- **Using Connecting Cable:** Connect one end of the 48-inch connecting cable to the output end of the first fixture and the other end to the input of the next fixture.
- **Using Small Connector:** For a seamless, direct connection between fixtures, use the small connector to join the output of one fixture to the input of another.

# INSTALLATION

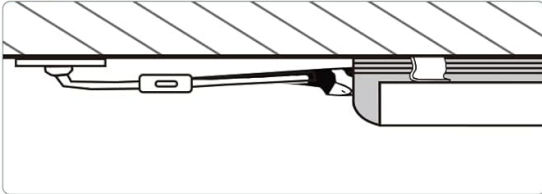
## 01 Screw the clips to the wall or ceiling



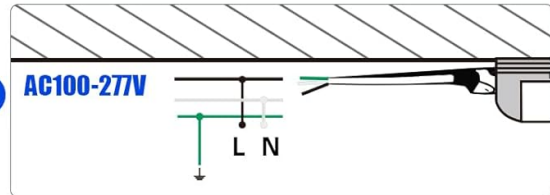
## 02 Push and secure LED fixture into the clips



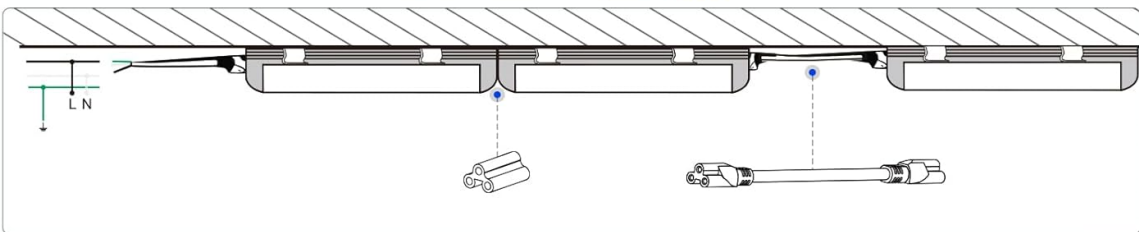
## 03 Power connection OR Hardwired connection



or



Can connect up to **SIX**



## Hardwire



- |          |   |         |   |                |
|----------|---|---------|---|----------------|
| • Brown  | = | • Black | = | Live wire      |
| • Blue   | = | • White | = | Neutral wire   |
| • Yellow | = | • Green | = | Grounding wire |

Image: Step-by-step installation guide showing how to mount clips, attach the light fixture, and connect power via plug or hardwire. It also illustrates linking multiple lights.

Your browser does not support the video tag.

Video: Demonstrates the installation process for the Barrina 4FT T8 LED Shop Light, including mounting and connection options.

## 6. OPERATING INSTRUCTIONS

Once installed and connected to power, operate your Barrina T8 LED Shop Light as follows:

- If using the power cord with an ON/OFF switch, simply toggle the switch to turn the light on or off.
- If hardwired, operate the light using the wall switch connected to the circuit.

## 7. MAINTENANCE

To ensure optimal performance and longevity of your LED shop light:

- **Cleaning:** Disconnect power before cleaning. Use a soft, dry cloth to wipe the fixture. Do not use abrasive cleaners or solvents.

- **Inspection:** Periodically check for any loose connections or damage to the fixture or wiring.
- **Replacement:** The LED chips are integrated and not user-replaceable. If the fixture malfunctions, refer to the troubleshooting section or warranty information.

## 8. TROUBLESHOOTING

---

If your Barrina T8 LED Shop Light is not functioning correctly, try the following:

- **Light does not turn on:**
  - Check if the power cord is securely plugged into the outlet.
  - Ensure the ON/OFF switch (if applicable) is in the 'ON' position.
  - Verify that the circuit breaker has not tripped.
  - Confirm all connections (power cord, connecting cables, hardwiring) are secure.
- **Light flickers:**
  - Check for loose connections.
  - Ensure the power supply is stable.
- **Reduced brightness:**
  - Clean the fixture to remove any dust or debris that may be obstructing light output.

If issues persist after troubleshooting, please contact Barrina customer support.

## 9. WARRANTY AND SUPPORT

---

Barrina provides a 3-year warranty for this LED Shop Light, covering defects in materials and workmanship under normal use. For warranty claims or technical support, please contact Barrina customer service through their official channels. Keep your purchase receipt as proof of purchase.

Your browser does not support the video tag.

*Video: A short promotional video from Barrina, highlighting the product's use in a garage setting and emphasizing the brand's presence in various stories.*

Documents - Barrina – INWT504014650Dc  
no relevant documents