

[Manuals.plus /](#)

[› FOXWELL /](#)

[› FOXWELL NT510 Elite OBD2 Scanner User Manual for Honda and Acura](#)

FOXWELL NT510 Elite

FOXWELL NT510 Elite OBD2 Scanner User Manual

Model: NT510 Elite for Honda/Acura

1. INTRODUCTION

The FOXWELL NT510 Elite is a professional diagnostic scan tool designed specifically for Honda and Acura vehicles. It provides comprehensive system diagnostics, bidirectional control, and a wide range of maintenance services. This manual will guide you through the setup, operation, and maintenance of your device to ensure optimal performance and accurate vehicle diagnostics.

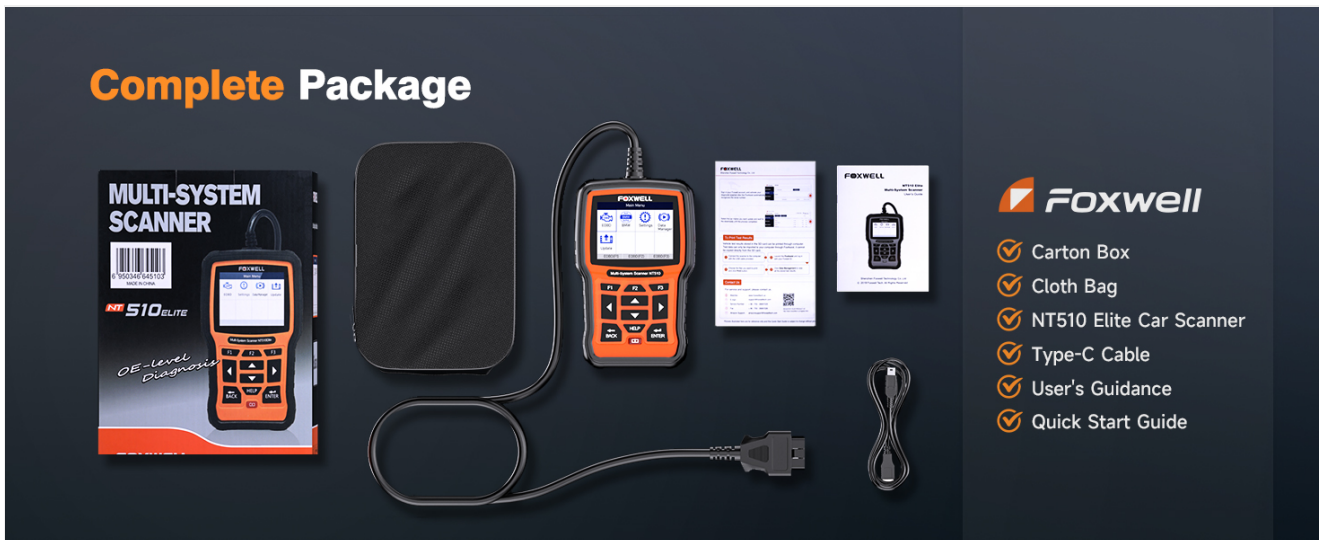


Image: The FOXWELL NT510 Elite diagnostic tool highlighting its key features for Honda and Acura vehicles.

2. SETUP

2.1 Unpacking and Initial Inspection

Carefully unpack the contents of the box. Ensure all items listed below are present and in good condition:

- 1x NT510 Elite Device (pre-loaded with Honda & Acura software)
- 1x Type-C Cable

- 1x User's Manual
- 1x Quick Start Guide



Image: The complete package contents of the FOXWELL NT510 Elite, including the device, cables, and documentation.

2.2 Device Registration and Updates

The device is typically pre-registered by the manufacturer. No additional registration is required for immediate use. If you wish to register the device under your own account, please contact FOXWELL support with the device's serial number to clear the original registration.

The NT510 Elite offers lifetime free updates via Wi-Fi. To update the device:

1. From the main menu, select "Update".
2. Connect the device to a stable Wi-Fi network (2.4GHz).
3. Select the desired software updates and confirm to begin the download and installation process.

Changing & Leading Automotive Diagnostic Industry



Image: The NT510 Elite display illustrating the steps for performing a Wi-Fi software update.

2.3 Connecting to Vehicle

The NT510 Elite is a plug-and-play device. Locate your vehicle's OBDII port (usually under the dashboard on the driver's side) and connect the device's cable. The device will power on automatically.

Oil Light Reset

Convenience and guidance steps for returning the oil light to 0

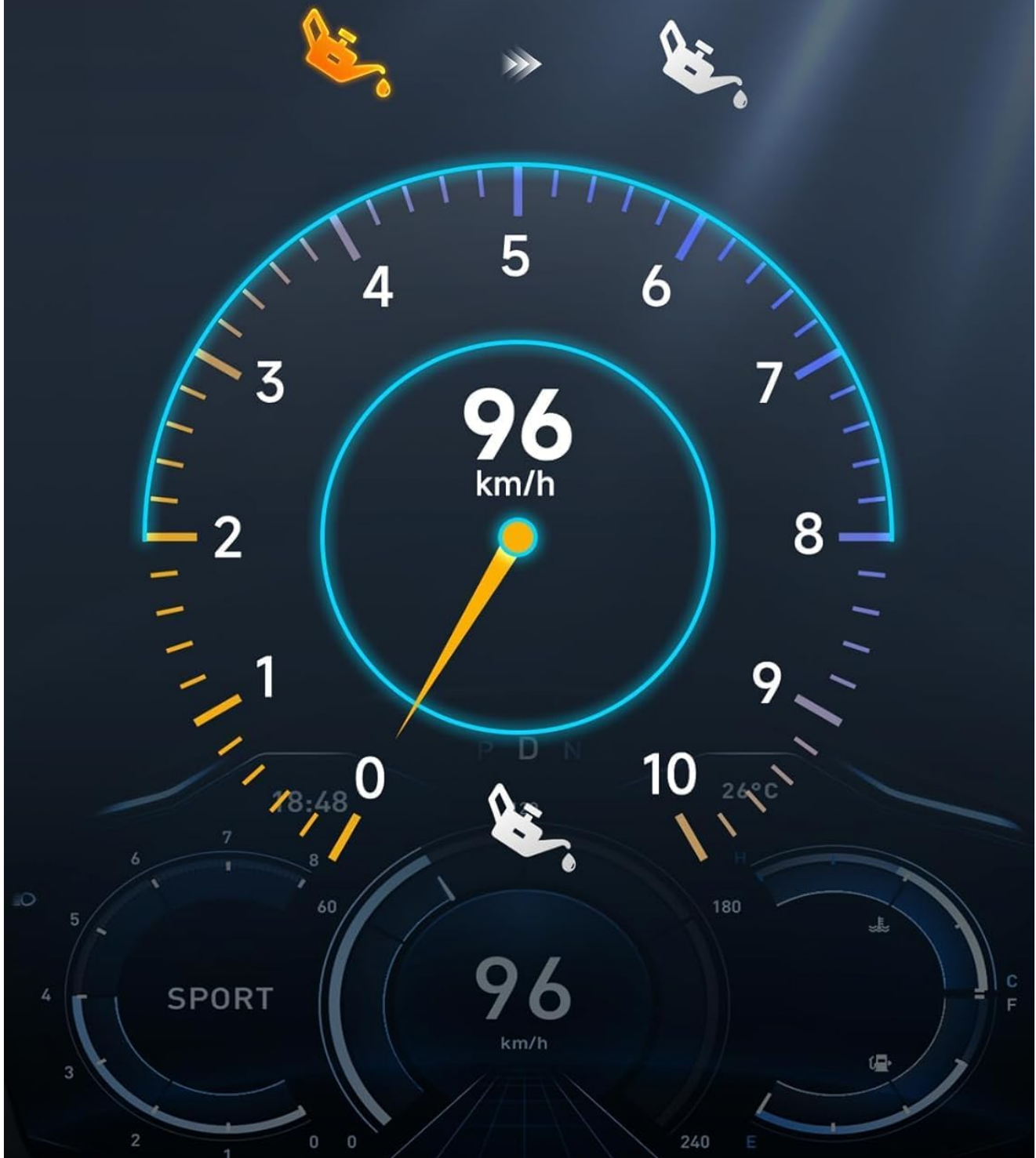


Image: The FOXWELL NT510 Elite device with its OBDII cable connected, ready for use in a vehicle.

3. OPERATING INSTRUCTIONS

3.1 Full System Diagnosis

The NT510 Elite can perform OE-level diagnosis on all available electronic control modules (ECUs) in your Honda or Acura vehicle. This includes systems such as Engine, ABS, Airbag (SRS), Transmission, Steering, A/C, TPMS, and more.

- **Read and Clear Fault Codes:** Identify and clear Diagnostic Trouble Codes (DTCs) to turn off Malfunction Indicator Lights (MIL).
- **Access ECU Information:** View detailed information about the vehicle's control units.
- **Display Live Data:** Monitor real-time data streams from various sensors and components in text or graphical formats.



Image: An illustration of a car's internal systems, indicating the comprehensive diagnostic coverage of the NT510 Elite.

Your browser does not support the video tag.

Video: Demonstration of how to read ABS data using the FOXWELL NT510 Elite scanner.

Your browser does not support the video tag.

Video: A guide on how to read AIRBAG data using the FOXWELL NT510 Elite diagnostic tool.

3.2 OBDII Functions

The scanner supports all 10 OBDII test modes, including:

- Live Data Stream (graphical and text)
- Read/Clear DTCs
- I/M Readiness (smog check)
- O2 Sensor Tests
- Freeze Frame Data
- EVAP System Test
- Vehicle Information Retrieval (VIN, CID, CVN)
- Malfunction Indicator Light (MIL) status
- Real-time battery voltage monitoring

3.3 Bidirectional Control & Active Tests

The NT510 Elite can send commands directly to the vehicle's ECU to perform active tests on specific components. This allows you to verify component functionality and diagnose potential issues. Examples include:

- Cycling the A/C clutch on/off
- Testing fuel injector pumps
- Operating windows, mirrors, and door locks
- Activating lights and headlamps
- Testing wipers and horns



Image: An animated diagram showing the bidirectional control capabilities of the diagnostic tool, interacting with various vehicle components.

4. MAINTENANCE SERVICES

The NT510 Elite provides over 30 special functions to assist with common vehicle maintenance tasks, helping to keep your vehicle in optimal condition.

4.1 Key Maintenance Functions

- **Oil Light Reset:** Reset the oil service light after an oil change.
- **EPB Service:** Deactivate and reactivate the electronic parking brake for brake pad replacement.
- **Throttle Relearn:** Calibrate the throttle position sensor after cleaning or replacement.
- **Crank Sensor Relearn:** Recalibrate the engine control module to new crankshaft position sensors for optimal engine performance.
- **ABS Bleeding:** Perform automated bleeding procedures for the Anti-lock Braking System.
- **TPMS:** Tire Pressure Monitoring System functions.
- **Battery Replacement:** Register new batteries with the vehicle's system.
- **Air Suspension:** Adjust or reset air suspension systems.
- **Injector Coding:** Code new injectors into the ECU.
- **DPF Regen:** Diesel Particulate Filter regeneration.

Transmission System



Image: A mechanic working on a car, representing the comprehensive maintenance services offered by the NT510 Elite.

ABS System

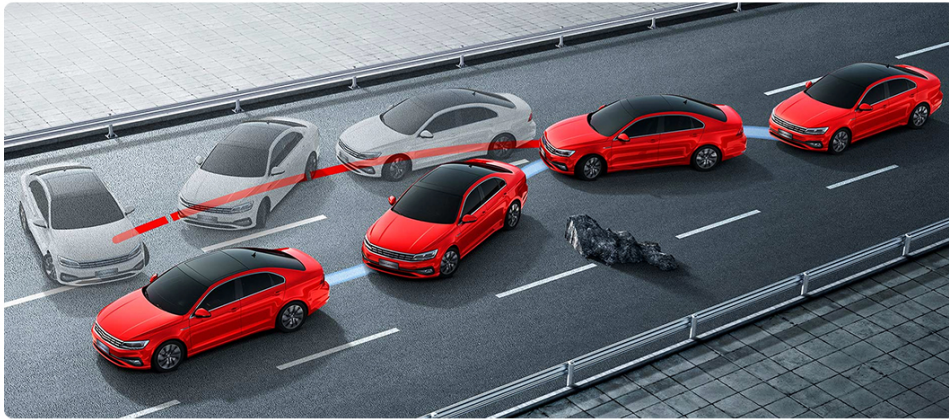


Image: A detailed diagram explaining the function of a crankshaft sensor and its role in engine control.

Airbag System



Image: A digital car dashboard illustrating the process of resetting the oil light.

5. TROUBLESHOOTING

5.1 Common Issues and Solutions

- **Device Not Powering On:** Ensure the OBDII cable is securely connected to the vehicle's port. Check the vehicle's battery voltage.
- **Communication Errors:** Verify that the vehicle's ignition is on. Ensure the device software is up to date. Compatibility varies by vehicle model and year; confirm your vehicle's compatibility.
- **Features Not Working:** Not all features are compatible with all Honda and Acura vehicles. Always verify compatibility for specific functions with FOXWELL support if unsure.
- **Update Issues:** Ensure a stable 2.4GHz Wi-Fi connection. If issues persist, contact FOXWELL support.

5.2 Compatibility Notice

The FOXWELL NT510 Elite is designed for Honda and Acura vehicles. However, specific features and functions may not work with all models or model years. It is highly recommended to confirm compatibility with FOXWELL support prior to performing critical operations if you encounter unexpected behavior.



Image: The NT510 Elite screen showing vehicle compatibility details, emphasizing the importance of checking supported models.

6. SPECIFICATIONS

Brand	FOXWELL
Model Number	NT510 for Honda

Power Source	Corded Electric (via OBDII port)
Product Dimensions (L x W x H)	5.71" x 3.7" x 1.26"
Operating System	Linux
Screen Size	2.8 Inches
Native Resolution	480 x 640
Automotive Fit Type	Vehicle Specific Fit (Honda & Acura)



Image: The rear view of the NT510 Elite, displaying its technical specifications label.

7. WARRANTY AND SUPPORT

7.1 Manufacturer Warranty

The FOXWELL NT510 Elite comes with a 12-month manufacturer's warranty from the date of purchase. Please retain your proof of purchase for warranty claims.

7.2 Technical Support

For technical assistance, software updates, or compatibility inquiries, please refer to the official FOXWELL website or contact their customer support. You can also reach out via Amazon message for support regarding your device. Additional vehicle software can be purchased and downloaded via the "FoxAssist" application from foxwelltech.us. Contact support if you need assistance adding software for other vehicle brands.

Your browser does not support the video tag.

Video: An overview of the FOXWELL NT510 Elite as a professional diagnostic tool for specific car manufacturers.

Your browser does not support the video tag.

Video: A demonstration highlighting the capabilities and functions of the FOXWELL NT510 Elite.