

CurrentBody CBD-114

CurrentBody Skin LED Neck & Décolletage Mask Series 1 User Manual

Model: CBD-114

1. INTRODUCTION

The CurrentBody Skin LED Neck & Décolletage Mask Series 1 is designed to deliver red and near-infrared light therapy to the neck and chest areas. This device utilizes specific wavelengths to support skin rejuvenation and address visible signs of aging.



Image 1.1: The CurrentBody Skin LED Neck & Décolletage Mask Series 1 device.

Product Features:

- Features 50 LEDs emitting red (633nm) and near-infrared (830nm) wavelengths.
- Designed to support collagen production and improve skin elasticity.
- Aims to reduce the appearance of wrinkles and improve skin texture.
- Flexible silicone design for optimal skin contact.

2. SAFETY INFORMATION

Important: For external use only.

Before your first treatment, a sensitivity test must be carried out. Follow these guidelines to ensure safe operation:

- Do not use if you are pregnant, breastfeeding, or have any light-sensitive conditions.
- Consult a healthcare professional if you have any medical conditions or are taking medications that may cause light sensitivity.
- Keep out of reach of children.
- Do not use on broken or irritated skin.

- Avoid direct eye exposure to the LED lights.
- Do not submerge the device in water.
- Use only the provided charging cable and adapter.

3. SETUP

3.1 Unpacking the Device

Carefully remove all components from the packaging. Ensure all items are present:

- CurrentBody Skin LED Neck & Décolletage Mask
- Controller
- USB Charging Cable
- User Manual

3.2 Initial Charge

Before first use, fully charge the device. Connect the USB charging cable to the controller and plug it into a suitable power source. The charging indicator light on the controller will illuminate. A full charge typically takes [X] hours (*Note: specific charging time not provided in data, user should refer to product packaging or official website for exact duration*).

4. OPERATING INSTRUCTIONS

4.1 Preparing for Treatment

1. Ensure your skin is clean and dry before applying the mask.
2. Position the flexible silicone mask comfortably around your neck and décolletage area, ensuring maximum skin contact.

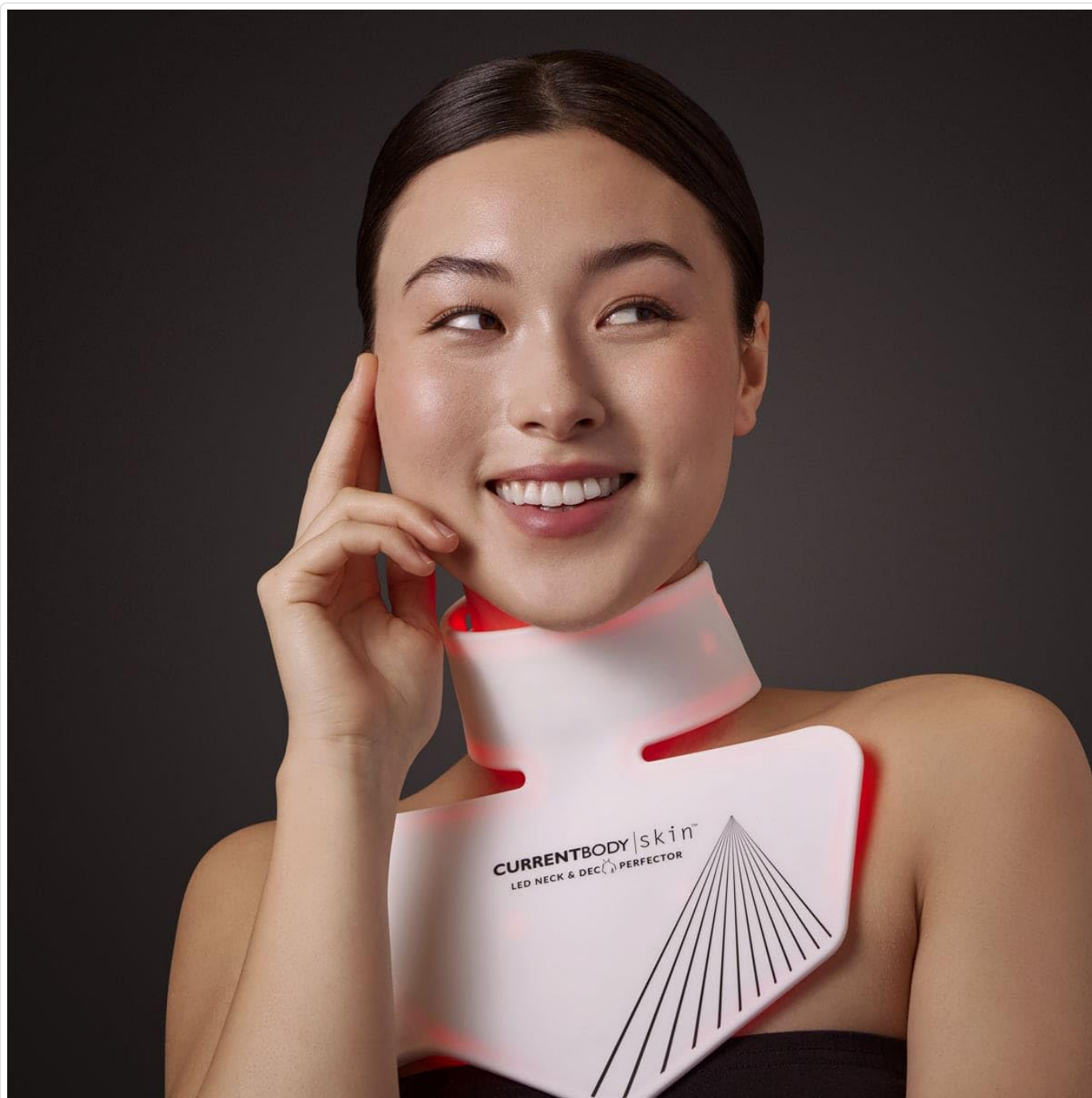


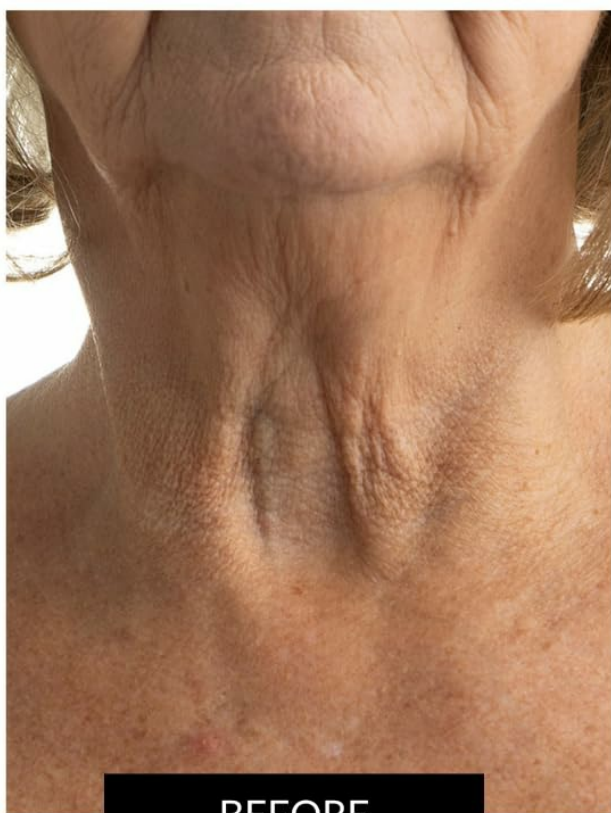
Image 4.1: Proper placement of the LED Neck & Décolletage Mask.

4.2 Starting a Treatment Session

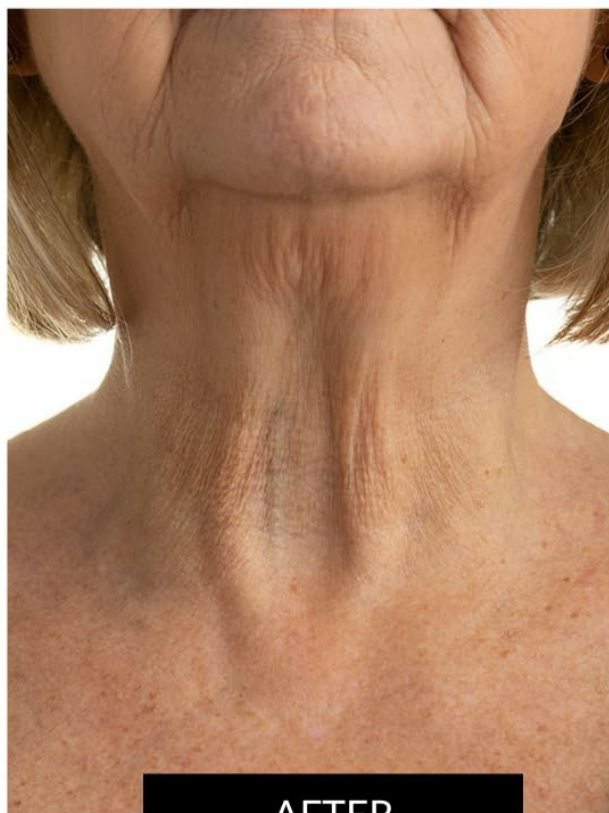
1. Press the power button on the controller to turn on the device. The LED lights will illuminate.
2. The device is programmed for a 10-minute treatment session. It will automatically switch off after this duration.
3. During the session, you can relax or engage in light activities.

4.3 Recommended Usage

Use the device for 10 minutes per session, 3 to 5 times a week, for optimal results. Consistent use is key to achieving desired outcomes.



BEFORE



AFTER

Image 4.2: Example of skin improvement on the neck after consistent use.



Image 4.3: Example of skin improvement on the décolletage after consistent use.

5. TECHNOLOGY AND BENEFITS

The mask utilizes two specific wavelengths of light:

- **Red Light (633nm):** This wavelength penetrates the epidermis to stimulate collagen production, which can help to plump the skin, smooth wrinkles, and reduce hyperpigmentation.
- **Near-Infrared Light (830nm):** This wavelength penetrates deeper into the dermis, energizing cells to promote firmer, tighter, and brighter skin.

Together, these wavelengths work to improve skin luminosity, elasticity, and texture, addressing the visible signs of aging.



Image 5.1: Diagram illustrating the penetration depth of Red and Near-Infrared light into the skin layers.

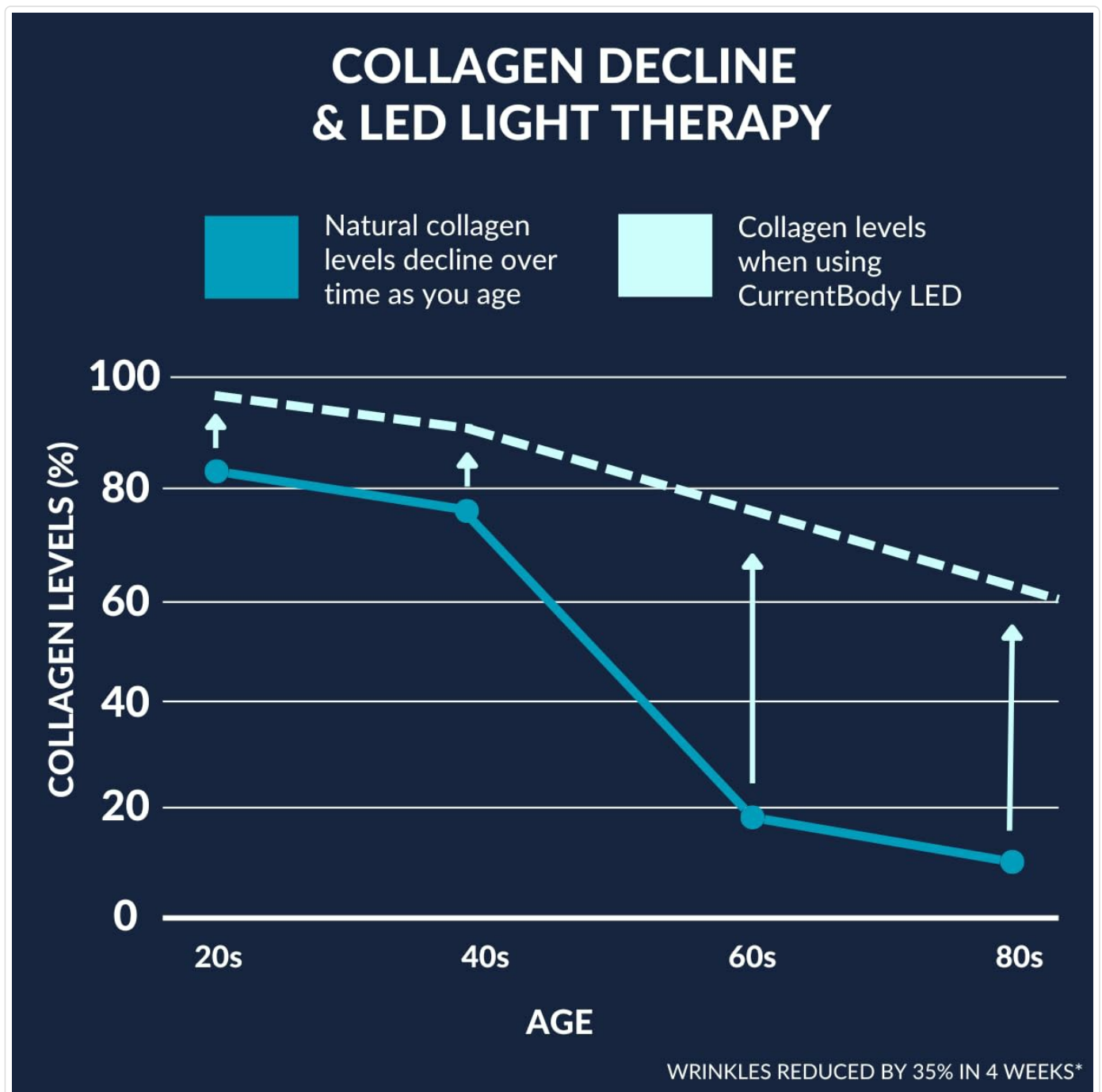


Image 5.2: Graph depicting natural collagen decline with age and the potential increase in collagen levels with LED light therapy.

6. MAINTENANCE

6.1 Cleaning the Device

To maintain hygiene and device longevity:

- After each use, gently wipe the mask with a clean, damp cloth.
- Do not use abrasive cleaners, alcohol, or harsh chemicals, as these can damage the silicone and LED components.
- Ensure the device is completely dry before storing.

6.2 Storage

Store the device in a cool, dry place, away from direct sunlight and extreme temperatures. Keep it in its original packaging or a protective bag to prevent damage.

7. TROUBLESHOOTING

Common Issues and Solutions

Problem	Possible Cause	Solution
Device does not turn on.	Low battery or no charge.	Ensure the device is fully charged. Check charging cable and adapter connection.
Charging light not working correctly.	Faulty charging cable or internal issue.	Try a different compatible charging cable and adapter. If the issue persists, contact customer support.
LEDs are not illuminating.	Device not powered on or internal malfunction.	Press the power button firmly. If still no light, ensure the device is charged. If problem continues, contact customer support.
Device feels uncomfortable.	Incorrect positioning.	Adjust the mask to sit comfortably on your neck and décolletage. Ensure straps (if any) are not too tight.

8. SPECIFICATIONS

- **Model Number:** CBD-114
- **Brand:** CurrentBody
- **LED Wavelengths:** Red (633nm), Near-Infrared (830nm)
- **Number of LEDs:** 50
- **Item Form:** Device
- **Product Benefits:** Anti-Aging
- **Material Type Free:** Alcohol Free
- **Skin Type Suitability:** All
- **Manufacturer:** CurrentBody

9. WARRANTY AND SUPPORT

CurrentBody provides a warranty for this product against defects in materials and workmanship under normal use. The specific terms and duration of the warranty may vary by region. Please refer to the warranty card included with your

product or visit the official CurrentBody website for detailed warranty information.

For technical support, troubleshooting assistance, or warranty claims, please contact CurrentBody customer service:

- **Website:** www.currentbody.com *(Note: This is a general link, specific support contact details may be on the product packaging or official site.)*
- **Email/Phone:** Refer to the CurrentBody website for the most up-to-date contact information.