

## VIJIM VL81

# VIJIM VL81 LED Video Light User Manual

Model: VL81 | Brand: VIJIM

## 1. INTRODUCTION

Thank you for choosing the VIJIM VL81 LED Video Light. This compact and powerful lighting solution is designed to enhance your photography and videography, providing adjustable brightness and color temperature for various shooting environments. Please read this manual carefully before use to ensure proper operation and longevity of your device.

## 2. KEY FEATURES

- **VL81 LED Video Light, CRI95+:** Adopts 81 High Effective Light Beads, offering wider angle, more brightness, and higher color rendering. CRI95+ ensures natural and lifelike light.
- **3200-5600K Steplessly Dimmable:** Cold and Warm Bi-color temperature (3200-5600K) and 10%-100% brightness are adjustable with a single switch. Suitable for portraits, nature, YouTube, and indoor shooting.
- **Soft Light, Protect the Eyes:** Built-in soft light panel makes the light softer and more natural, protecting your eyes. Ideal for selfies, vlogs, still-life, weddings, portraits, children's photography, and YouTube videos.
- **Built-in Lithium Battery:** 3000mAh capacity rechargeable battery provides 120-150 minutes of continuous use at maximum power. Features a TYPE C charging port and can be used while charging. Lightweight and durable for portability.
- **3 Cold Shoe Mounts:** Designed with 3 cold shoe mounts (1 on top, 2 on the sides) for connecting multiple light panels to strengthen brightness or for attaching other accessories. Cold shoe adapter with 1/4 threaded hole is compatible with DSLR cameras, camcorders, tripods, and light stands.

## 3. PRODUCT OVERVIEW



Figure 3.1: Front and back view of the VIJIM VL81 LED Video Light, showing the light panel and control knobs.



Figure 3.2: Detailed diagram illustrating the components of the VL81, including the 81 high-quality beads, soft board, 1/4 interface, cold shoe knob, power/brightness knob, CT knob, power indicator, and Type-C interface.

The VIJIM VL81 is designed for ease of use and portability. It features a compact square design with a soft light panel on the front and control knobs on the back. The device includes a standard 1/4-inch screw mount at the bottom for attachment to cameras, tripods, or other accessories. Additionally, three cold shoe mounts are integrated for expanding your lighting setup or attaching microphones and other gear.

## 4. SETUP

1. **Charging the Battery:** Before first use, fully charge the built-in 3000mAh lithium battery using the provided Type-C USB cable. Connect the cable to the Type-C port on the light and a suitable USB power source (e.g., wall adapter, power bank, computer USB port). The power indicator lights will show charging status.
2. **Attaching to a Device:**
  - For cameras with a hot/cold shoe: Slide the cold shoe adapter at the bottom of the VL81 into your camera's hot/cold shoe mount and tighten the locking knob.
  - For tripods or light stands: Use the 1/4-inch threaded hole at the bottom of the VL81 to screw it onto a compatible tripod or light stand.
  - For handheld use: The compact size allows for comfortable handheld operation.

3. **Connecting Multiple Lights:** Utilize the three cold shoe mounts (one on top, two on the sides) to connect additional VL81 units or other cold shoe compatible accessories (e.g., microphones, monitors) to create a more comprehensive setup.



Figure 4.1: Examples of multi-purpose and fully-compatible setups, including attachment to a camera, assembly of multiple lights, and mounting on a tripod.

## 5. OPERATION

1. **Power On/Off:** Press and hold the Power/Brightness knob (marked with a power symbol) located on the back of the unit to turn the light on or off.
2. **Adjusting Brightness:** Rotate the Power/Brightness knob to adjust the light intensity from 10% to 100%. Turning it clockwise increases brightness, counter-clockwise decreases it.
3. **Adjusting Color Temperature:** Rotate the CT knob (marked with 'CT' symbol) to change the color temperature from 3200K (warm light) to 5600K (cool light).

## Adjust Brightness and Color Temperature

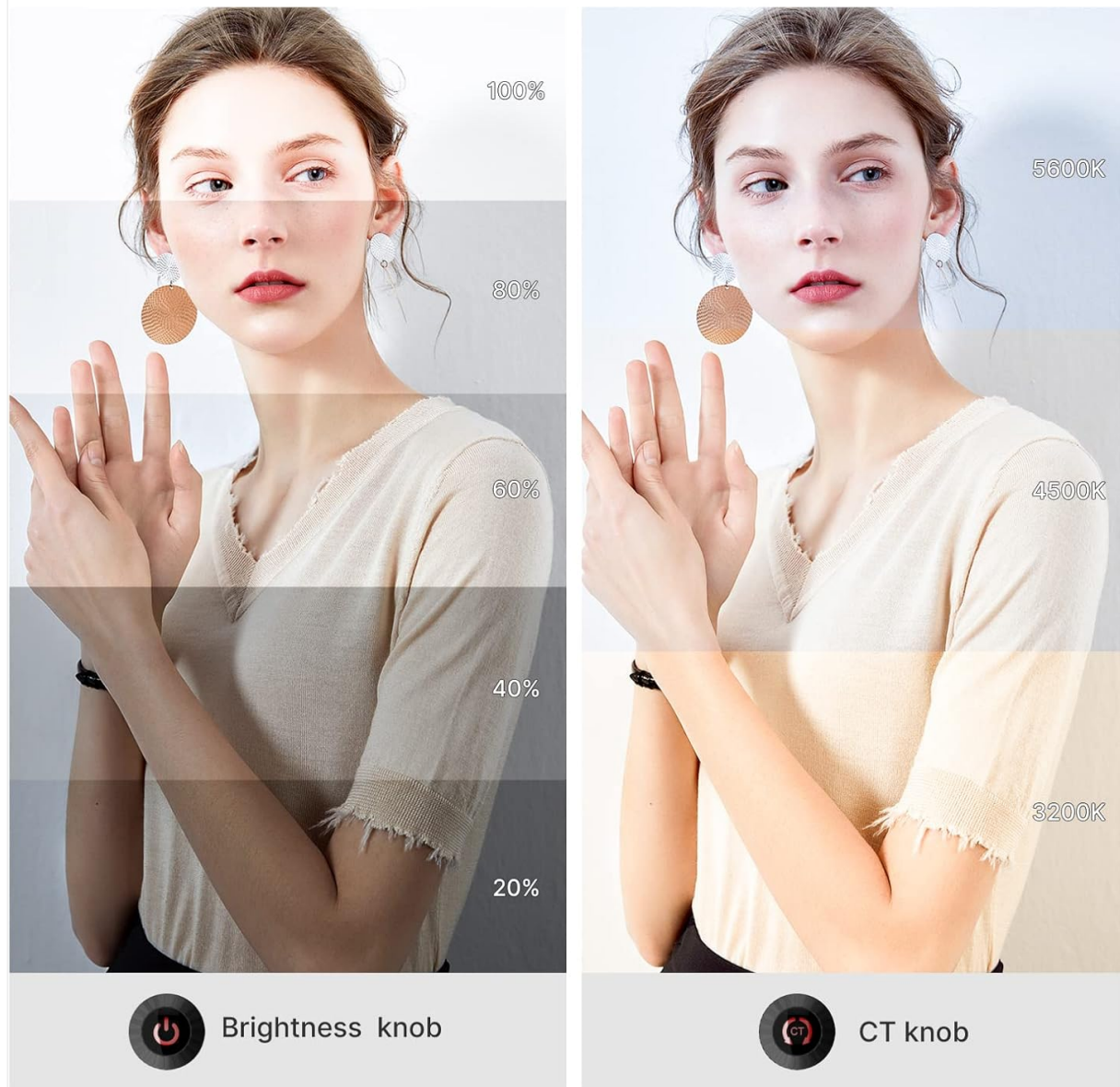


Figure 5.1: Visual representation of adjusting brightness and color temperature using the respective knobs on the VL81.

The VL81 is designed for wide application, compatible with various hot shoe and cold shoe cameras, supporting tripods, and can be used with a variety of handheld devices. Its portability makes it suitable for interviews, outdoor shooting, vlogging, general lighting, recording, and live broadcasts.





Figure 5.2: Diverse usage scenarios for the VL81, including interviews, outdoor shoots, vlogging, general lighting, recording, and live broadcasts.

## 6. MAINTENANCE

- Keep the device dry. Do not expose it to moisture or rain.
- Clean the light panel and body with a soft, dry cloth. Avoid using harsh chemicals or abrasive materials.
- Store the light in a cool, dry place when not in use.
- Avoid dropping or subjecting the device to strong impacts.
- Do not attempt to disassemble or repair the unit yourself. Refer to qualified service personnel.

## 7. TROUBLESHOOTING

Problem	Possible Cause	Solution
Light does not turn on.	Battery is depleted.	Charge the battery fully using the Type-C cable.
Light flickers or is dim.	Low battery or incorrect brightness setting.	Recharge the battery. Adjust the brightness knob.
Cannot adjust color temperature.	Incorrect knob used or faulty unit.	Ensure you are rotating the CT knob. If problem persists, contact support.
Light gets warm during use.	Normal operation, especially at high brightness.	This is normal. Ensure proper ventilation. If it becomes excessively hot, turn off and let cool.

## 8. SPECIFICATIONS



Feature	Detail
Model Number	VL81
Product Dimensions	2.99 x 0.98 x 3.5 inches
Item Weight	5.3 ounces
Battery Capacity	3000mAh
Battery Life (Max Power)	120-150 minutes
Color Temperature Range	3200K-5600K
Color Rendering Index (CRI)	CRI95+
LED Beads	81
Charging Port	USB Type C
Mounting Options	1/4" Threaded Hole, 3 Cold Shoe Mounts
Water Resistance Level	Not Water Resistant




9. WARRANTY AND SUPPORT

VIJIM products are manufactured to high quality standards. For any issues or inquiries regarding your VL81 LED Video Light, please contact the seller or visit the official VIJIM store for support.

For more information and product updates, please visit the [VIJIM Official Store on Amazon](#).

Related Documents - VL81

	<p><a href="#">VIJIM R66 RGB LED Light User Manual</a></p> <p>User manual for the VIJIM R66 RGB LED light, detailing features, operation, installation, and specifications for photography and videography.</p>
	<p><a href="#">Vijiim UW-MIC20P Wireless Microphone System User Manual</a></p> <p>User manual for the Vijiim UW-MIC20P wireless microphone system, detailing FCC regulatory compliance and operational guidelines. Original document includes detailed diagrams and specifications.</p>

	<p><a href="#">VIJIM K7 LED Desk Panel User Manual - Setup, Features, and Warranty</a></p> <p>Comprehensive user manual for the VIJIM K7 LED Desk Panel, covering setup, intended use, product configuration, functions, and warranty information. Learn how to use and maintain your VIJIM K7 light.</p>
	<p><a href="#">C03 Selfie Stick User Manual and Specifications</a></p> <p>This document provides instructions and specifications for the C03 Selfie Stick, including setup, remote control pairing, and compatibility information. It details the product's materials, dimensions, weight, and battery requirements, along with FCC compliance statements and RF exposure information.</p>
	<p><a href="#">VALOI easy35 Quick Start Guide - Digital Film Scanning</a></p> <p>A comprehensive quick start guide for the VALOI easy35, detailing setup, usage, and best practices for digital film scanning with your camera.</p>