

hykolity DYXDD300-S24W-04

hykolity 12 Inch Selectable CCT LED Round Flat Panel Light User Manual

Model: DYXDD300-S24W-04

1. INTRODUCTION

This manual provides comprehensive instructions for the installation, operation, and maintenance of your hykolity 12 Inch Selectable CCT LED Round Flat Panel Light. Please read this manual thoroughly before installation and retain it for future reference. This LED fixture is designed for flush mount ceiling installation and offers selectable color temperatures to suit various indoor environments.

2. SAFETY INFORMATION

WARNING: Risk of electric shock. Disconnect power at the fuse or circuit breaker before installation or servicing.

- Ensure the main power supply is turned off before beginning installation.
- All electrical connections must be in accordance with local and National Electrical Code (NEC) standards. If you are unfamiliar with proper electrical wiring connections, consult a qualified electrician.
- Do not install this fixture with wet hands or while standing on a wet surface.
- This product is intended for indoor use only. Rated for damp locations.
- Do not attempt to modify the fixture. Any modifications may void the warranty and create safety hazards.

3. PACKAGE CONTENTS

Verify that all components are present before installation:

- LED Light Fixture
- Mounting Hardware (screws, wire nuts)
- Instruction Manual

4. SPECIFICATIONS

Feature	Specification
Brand	hykoly
Model Name	DYXDD300-S24W-04
Size	12 inch
Product Dimensions	11.81"L x 11.81"W x 0.94"H
Wattage	24 Watts
Brightness	2160 Lumens
Efficiency	90 lumens per watt
Color Temperature (CCT)	3000K (Warm White), 4000K (Neutral White), 5000K (Cool White)
Voltage	120 Volts
CRI (Color Rendering Index)	80.0+
Average Life	50,000 Hours
Material	Plastic
Installation Type	Flush Mount
Indoor/Outdoor Usage	Indoor
Certification	ETL

The fixture features an ultra-slim design, measuring less than 1 inch in thickness, making it suitable for low-ceiling areas.

ULTRA SLIM DESIGN

Only 0.94inch, Much Closer to Ceiling

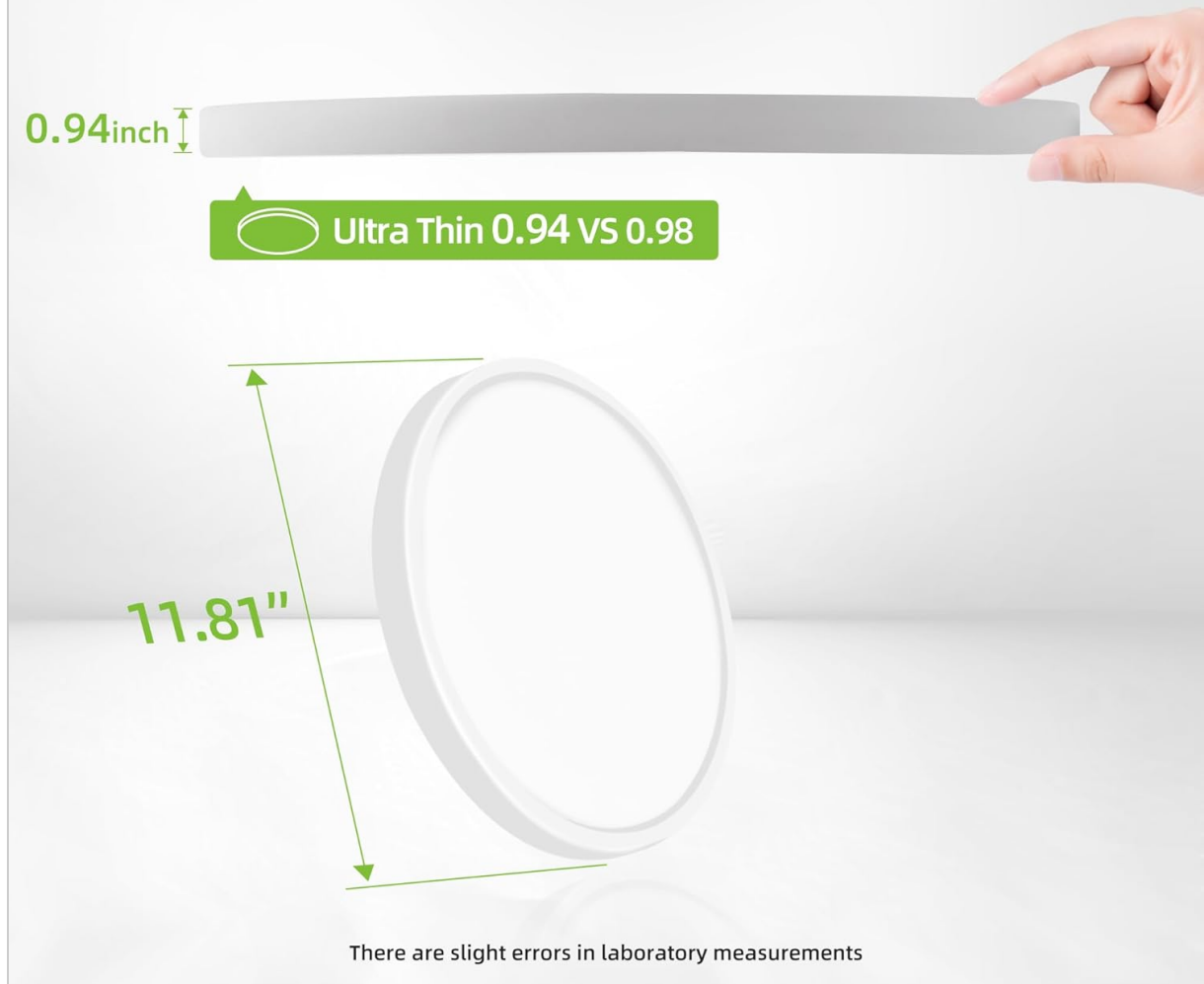


Figure 1: Ultra-Slim Design Dimensions

5. INSTALLATION INSTRUCTIONS

Follow these steps for safe and proper installation:

1. **Step 1: Prepare for Installation**

Turn off power at the circuit breaker or fuse box. Ensure the power is completely disconnected before proceeding.

2. **Step 2: Remove the Base**

Rotate the light fixture counter-clockwise to detach the base plate from the main body of the light. This exposes the mounting bracket and wiring area.

EASY INSTALLATION

Take only 2 minutes to finish

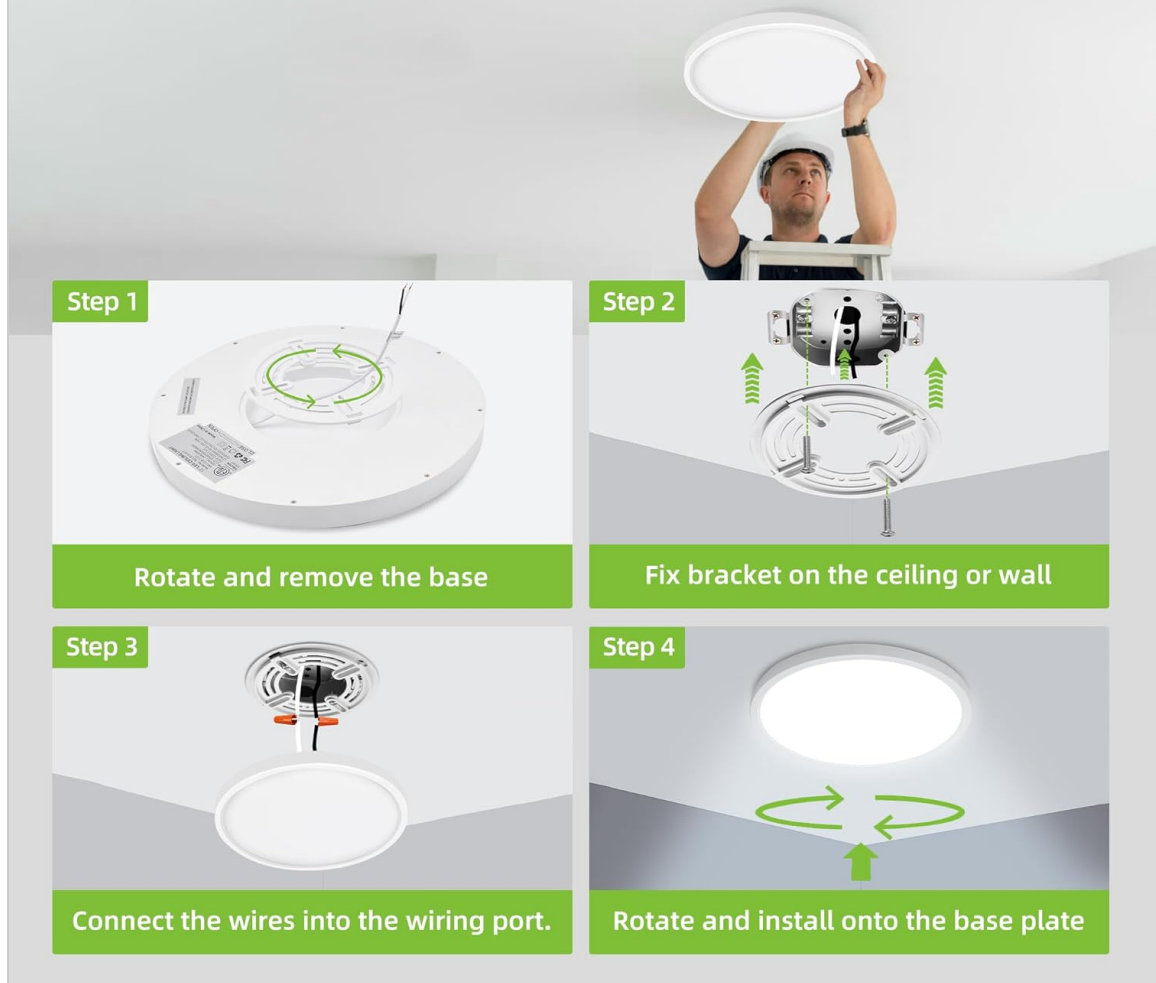


Figure 2: Easy Installation Steps Overview

3. Step 3: Fix the Mounting Bracket

Align the mounting bracket with the junction box on your ceiling or wall. Use the provided screws to securely fix the bracket. Ensure the bracket is firmly attached to a structural element.



Figure 3: Securing the Mounting Bracket

4. Step 4: Connect the Wires

Connect the household electrical wires to the fixture's wires using the provided wire nuts. Connect the live (black) wire to the black fixture wire, and the neutral (white) wire to the white fixture wire. This fixture typically does not require a ground wire connection as it is double-insulated.



Figure 4: Wiring Connections

5. **Step 5: Attach the Light Fixture**

Carefully tuck the connected wires into the junction box. Align the light fixture with the installed mounting bracket and rotate it clockwise until it locks securely into place.

6. **Step 6: Restore Power**

Once the fixture is securely installed, restore power at the circuit breaker.

6. OPERATING INSTRUCTIONS

6.1. Selecting Color Temperature (CCT)

This fixture features a selectable CCT switch located on the back of the light. Before final installation, you can choose your preferred color temperature:

- **3000K:** Warm White (for a cozy, inviting atmosphere)
- **4000K:** Neutral White (for a balanced, natural light)
- **5000K:** Cool White (for bright, task-oriented lighting)

To change the CCT, locate the small slide switch on the back of the fixture and move it to the desired setting (3000K, 4000K, or 5000K) before mounting the light to the ceiling bracket.

Switch between three color temperature modes

Choose your favorite color temperature



3000K Warm White

4000K Neutral White

5000K Cool White



Figure 5: CCT Selection Switch

Once installed, the light is operated by a standard wall switch. This fixture is not dimmable.

7. MAINTENANCE

The hykolity LED Flat Panel Light requires minimal maintenance.

- **Cleaning:** Ensure power is off before cleaning. Wipe the fixture with a soft, dry, or slightly damp cloth. Do not use harsh chemicals, abrasive cleaners, or solvents, as these can damage the finish or electrical components.
- **Bulb Replacement:** The LEDs are integrated into the fixture and are not user-replaceable. The fixture has an average lifespan of 50,000 hours.

8. TROUBLESHOOTING

If you encounter issues with your light fixture, refer to the following common problems and solutions:

Problem	Possible Cause	Solution
---------	----------------	----------

Problem	Possible Cause	Solution
Light does not turn on	No power supply Loose wiring connection Faulty wall switch	Check circuit breaker or fuse. Ensure all wire connections are secure (with power off). Test the wall switch with another device or consult an electrician.
Light flickers or buzzes	Loose wiring Incompatible dimmer switch (this fixture is not dimmable)	Check all wire connections (with power off). Ensure the fixture is not connected to a dimmer switch. Use a standard ON/OFF switch.
Incorrect color temperature	CCT switch set incorrectly	Turn off power, remove fixture, adjust CCT switch to desired setting, then reinstall.

If the problem persists after attempting these solutions, please contact customer support.

9. WARRANTY INFORMATION

This hykolity LED Flat Panel Light comes with a **Limited Warranty**. Please refer to the product packaging or contact customer support for specific warranty terms and conditions. The warranty typically covers defects in materials and workmanship under normal use.

10. CUSTOMER SUPPORT

For any questions, concerns, or assistance with your hykolity product, please contact our customer service team. We are committed to ensuring a positive purchasing experience.

- **Contact Method:** Please reach out through your order platform for prompt assistance.
- **Response Time:** We aim to reply within 24 hours.