

Manuals+

[Q & A](#) | [Deep Search](#) | [Upload](#)

manuals.plus /

- › [Nostalgia](#) /
- › [Nostalgia MyMini Personal Sandwich Maker User Manual](#)

Nostalgia MSAND5MG

Nostalgia MyMini Personal Sandwich Maker User Manual

Model: MSAND5MG | Brand: Nostalgia

INTRODUCTION

The Nostalgia MyMini Personal Sandwich Maker is designed for quickly preparing hot sandwiches, pizza pockets, paninis, grilled cheese, and other similar items. Its compact and lightweight design makes it suitable for various living spaces, including small kitchens, apartments, dorms, and recreational vehicles.



Figure 1: The Nostalgia MyMini Personal Sandwich Maker in its closed position.

IMPORTANT SAFEGUARDS

WARNING:

- Read all instructions before operating this appliance.
- Do not touch hot surfaces. Use handles or knobs.
- To protect against electrical shock, do not immerse cord, plugs, or any part of the unit in water or other liquids.
- Close supervision is necessary when any appliance is used by or near children.
- Unplug from outlet when not in use and before cleaning. Allow to cool before putting on or taking off parts, and before cleaning the appliance.
- Do not operate any appliance with a damaged cord or plug, or after the appliance malfunctions or has been damaged in any manner. Return appliance to the nearest authorized service facility for examination, repair, or adjustment.
- The use of accessory attachments not recommended by the appliance manufacturer may cause injuries.
- Do not use outdoors.
- Do not let cord hang over edge of table or counter, or touch hot surfaces.
- Do not place on or near a hot gas or electric burner, or in a heated oven.
- Extreme caution must be used when moving an appliance containing hot oil or other hot liquids.
- Do not use appliance for other than intended use.
- A short power-supply cord is provided to reduce the risk resulting from becoming entangled in or tripping over a longer cord.
- This product contains chemicals known to the State of California to cause cancer and birth defects or other reproductive harm. (Proposition 65 warning)

PRODUCT FEATURES

- **Dual-Sided Cooking Surface:** Each cooking surface is 5-inches wide, providing quick, efficient, and consistent results. The nonstick surface facilitates easy cleaning.
- **Flavor Sealing Design:** Unique plate design creates two sectional pieces that help seal in flavorful ingredients.
- **Compact & Lightweight:** Small size makes it ideal for limited counter space in kitchens, apartments, offices, dorms, and RVs.
- **Cool-Touch Handles:** Ensures safety when opening and closing the lid during operation.
- **Locking Latch:** Secures the lid during cooking.
- **Indicator Lights:** Power and preheat indicator lights signal when the unit is ready for use.
- **Cord Storage:** Appliance cord can be wrapped underneath the base for tidy storage.



Figure 2: Key features of the sandwich maker, including dual-sided cooking and flavor sealing.

SETUP

1. Before first use, wipe down all surfaces with a damp cloth and dry thoroughly.
2. Ensure the unit is placed on a stable, heat-resistant surface.
3. Plug the appliance into a standard electrical outlet. The power indicator light will illuminate.
4. Allow the unit to preheat for 1-3 minutes. The preheat indicator light will turn off when the desired temperature is reached, indicating it's ready for cooking.

OPERATING INSTRUCTIONS

The Nostalgia MyMini Personal Sandwich Maker simplifies the process of preparing various hot meals. Follow these steps for optimal results:

1. Once the unit is preheated (indicator light off), carefully open the lid using the cool-touch handle.

2. Place your ingredients onto the non-stick cooking surface. For sandwiches, ensure ingredients are centered to allow for proper sealing.
3. Close the lid and secure it with the locking latch. This helps to seal in flavors and ensure even cooking.
4. Allow the food to cook until desired crispness and doneness are achieved. Cooking times will vary based on ingredients.
5. Carefully open the lid and remove the cooked food using a non-metallic utensil to avoid damaging the non-stick surface.
6. Unplug the unit from the wall outlet when finished cooking.



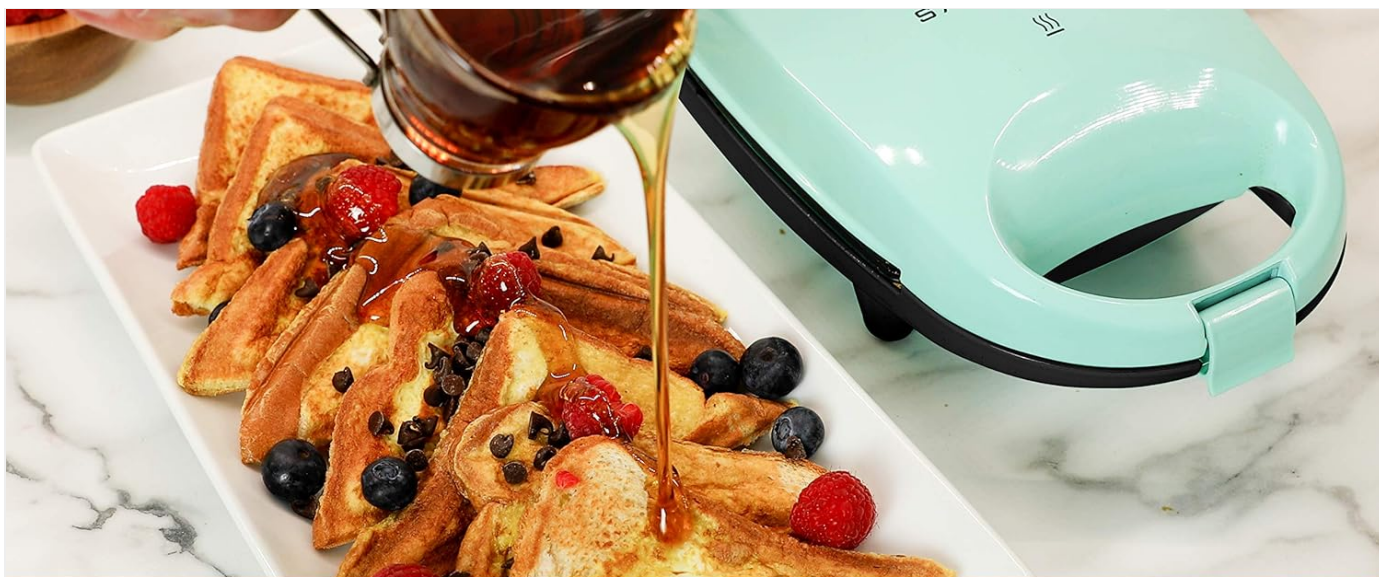
Figure 3: Simple 3-step process for cooking with the sandwich maker.

Versatile Cooking Options

Beyond traditional sandwiches, this appliance can be used to prepare a variety of other dishes:

- Pizza Pockets
- Quesadillas

- Breakfast Sandwiches
- Omelets
- French Toast
- Small Pies or Pastries



MAKE MORE THAN SANDWICHES!
 COOK FRENCH TOAST, DESSERT PIES,
 OMELETS & EVEN COOKIES



Figure 4: Examples of diverse meals that can be prepared with the unit.

MAINTENANCE AND CLEANING

Proper maintenance ensures the longevity and performance of your sandwich maker. Always unplug the unit and allow it to cool completely before cleaning.

- The non-stick cooking surfaces can be easily wiped clean with a damp cloth or sponge.
- For stubborn residue, use a small amount of mild dish soap. Avoid abrasive cleaners or scouring pads, as these can damage the non-stick coating.
- Do not immerse the appliance in water or any other liquid.

- Wipe the exterior of the unit with a damp cloth and dry thoroughly.
- Ensure the unit is completely dry before storing.

TROUBLESHOOTING

Problem	Possible Cause	Solution
Unit does not turn on.	Not plugged in, power outlet issue.	Ensure the unit is securely plugged into a working electrical outlet. Check the circuit breaker.
Food not cooking evenly or taking too long.	Unit not fully preheated, too much food, uneven distribution.	Wait for the preheat indicator light to turn off. Do not overfill the cooking plates. Distribute ingredients evenly.
Food sticking to the plates.	Insufficient non-stick properties, residue from previous use.	Ensure plates are clean before use. A light spray of cooking oil can be applied if needed, though the surface is non-stick.
Exterior becomes very hot during use.	Normal operation for heating elements.	This is normal. Always use the cool-touch handles and avoid touching other hot surfaces. Ensure proper ventilation around the unit.

SPECIFICATIONS

Feature	Detail
Model Number	MSAND5MG
Brand	Nostalgia
Color	Mint Green
Material	Non-stick coating, Plastic (Lead Free, PFAS Free, PFOA Free)
Product Dimensions	8.5"D x 3.5"W x 3.5"H
Item Weight	1.85 pounds (0.84 Kilograms)
Wattage	1200 watts
Voltage	120 Volts
Cable Length	5 Inches
Special Feature	Manual operation

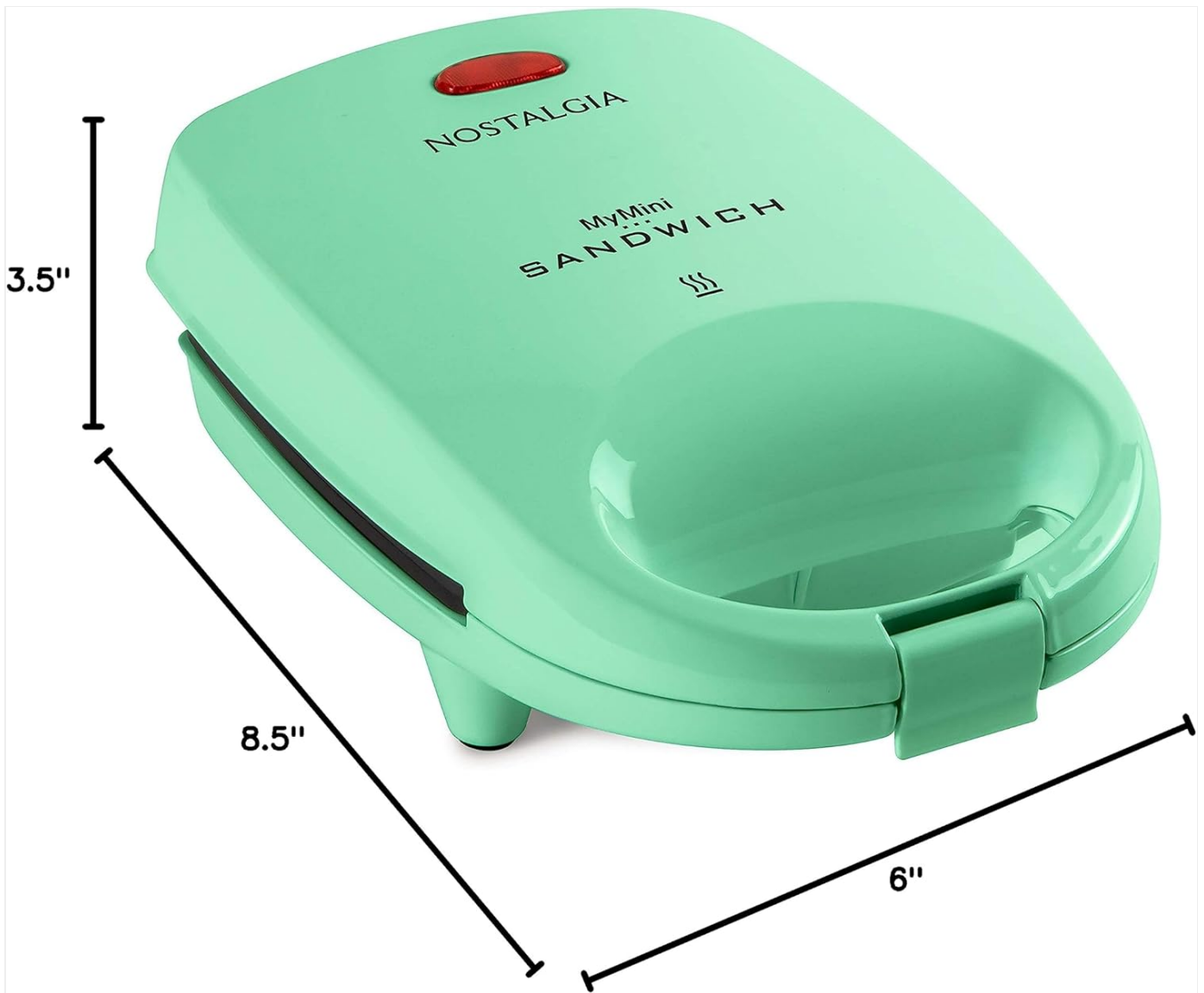


Figure 5: Product dimensions for compact storage and use.

WARRANTY AND SUPPORT

For warranty information, technical support, or to purchase replacement parts, please visit the official Nostalgia website or contact their customer service department. Keep your purchase receipt for warranty claims.

Official Nostalgia Store: [Nostalgia Store on Amazon](#)