

Aruba a Hewlett Packard Enterprise company 1930 48G 4SFP+ PoE 370W

Aruba ION 1930 48G 4SFP+ 370W Switch User Manual

Model: 1930 48G 4SFP+ PoE 370W

1. INTRODUCTION

This manual provides essential information for the installation, operation, and maintenance of your Aruba ION 1930 48G 4SFP+ 370W Switch. The Aruba ION 1930 series is a managed Layer 2+ network switch designed for small and medium businesses, offering reliable connectivity and advanced features.

This model is equipped with 48 RJ-45 ports and 4 SFP+ ports, providing a switching capacity of 176 Gbps. It supports Power over Ethernet (PoE) with a 370W power budget, making it suitable for powering various network devices such as access points, IP cameras, and VoIP phones. The switch is designed for rack mounting in a 1U form factor.

2. SAFETY INFORMATION

Please read and understand all safety instructions before installing or operating this device. Failure to do so may result in injury or damage to the equipment.

- **Power:** Connect the device only to a power source that matches the specifications indicated on the product label. Ensure proper grounding.
- **Ventilation:** Do not block ventilation openings. Ensure adequate airflow around the device to prevent overheating.
- **Environment:** Operate the device in a clean, dry environment within the specified temperature and humidity ranges. Avoid exposure to moisture, dust, and extreme temperatures.
- **Servicing:** Do not attempt to service this product yourself. Refer all servicing to qualified service personnel.
- **Cables:** Use appropriate and undamaged cables for all connections.

3. PACKAGE CONTENTS

Verify that your package contains the following items:

- Aruba ION 1930 48G 4SFP+ 370W Switch
- Rack-mount kit
- Power cord
- Documentation (Quick Start Guide, Safety and Regulatory Information)
- (Possibly Ethernet cables, depending on region/bundle)

4. PHYSICAL OVERVIEW

4.1 Front Panel

The front panel of the Aruba ION 1930 48G 4SFP+ 370W Switch features 48 Gigabit Ethernet ports and 4 SFP+ uplink ports. Each port has corresponding LED indicators for status and activity. The front panel also includes system status LEDs.

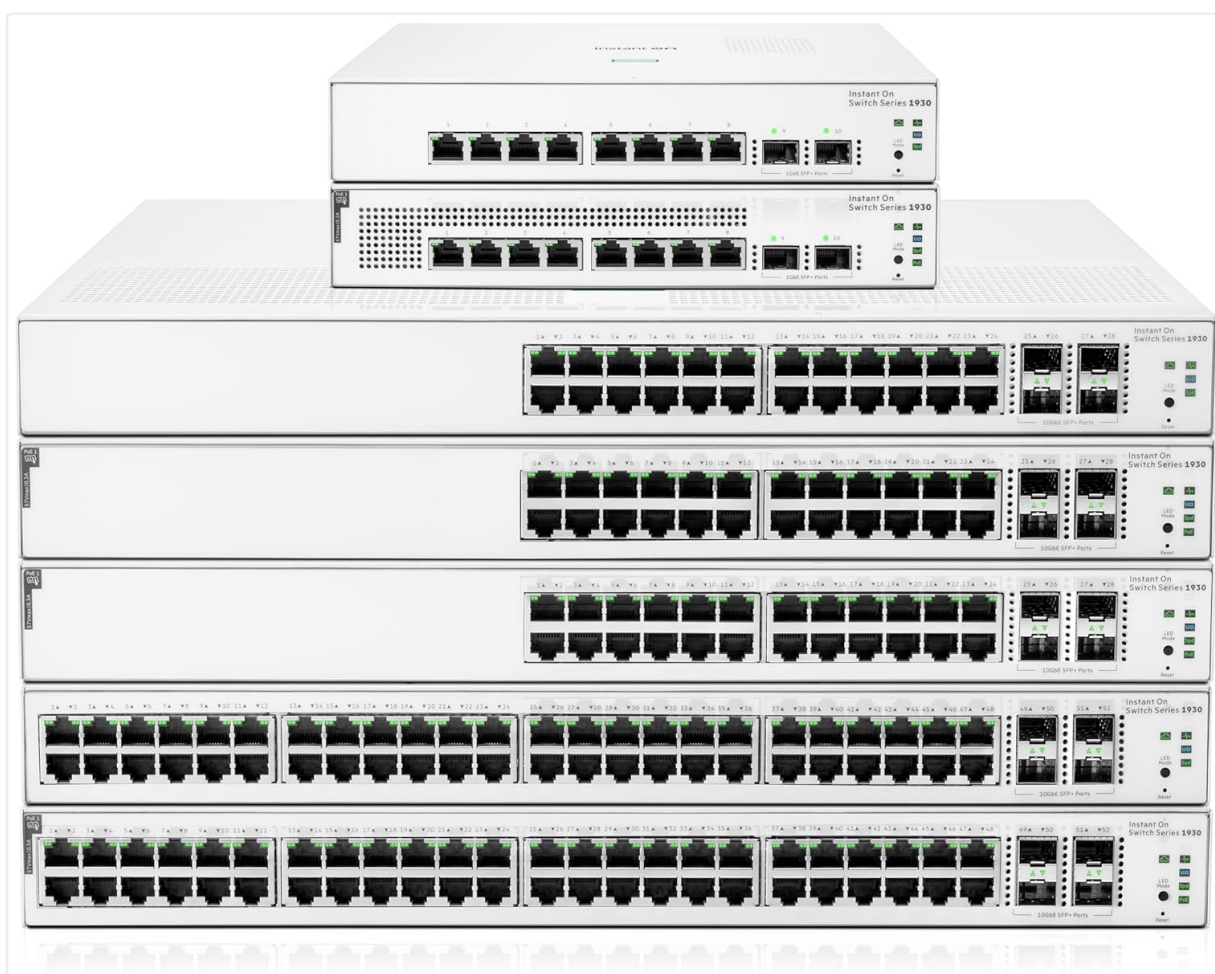


Figure 4.1: Front view of the Aruba ION 1930 48G 4SFP+ 370W Switch, displaying the 48 RJ-45 Gigabit Ethernet ports and 4 SFP+ uplink ports, along with LED indicators.

4.2 Rear Panel

The rear panel includes the AC power input connector and a grounding screw. Ensure the power cable is securely connected and the device is properly grounded.



Figure 4.2: Rear view of the Aruba ION 1930 48G 4SFP+ 370W Switch, highlighting the power input connector and grounding point.

5. SETUP

5.1 Rack Mounting

The Aruba ION 1930 switch is designed for standard 19-inch rack mounting. Use the included rack-mount kit to secure the switch in your equipment rack. Ensure sufficient space for ventilation around the device.

1. Attach the rack-mount brackets to the sides of the switch using the provided screws.
2. Align the switch with the rack posts and secure it using appropriate rack screws.

5.2 Power Connection

Connect the provided power cord to the AC power input on the rear panel of the switch and then to a grounded electrical outlet. Ensure the power source meets the device's requirements (100-240V AC, 50/60Hz).

5.3 Network Connections

Connect your network devices (computers, servers, access points, IP cameras) to the RJ-45 ports on the front panel using standard Ethernet cables. For high-speed uplinks or fiber connections, use the SFP+ ports with compatible transceivers and fiber optic cables.

The switch supports Power over Ethernet (PoE) on its RJ-45 ports, allowing you to power compatible devices directly through the Ethernet cable, eliminating the need for separate power adapters for those devices.

6. OPERATING THE SWITCH

The Aruba ION 1930 switch is a managed device, offering flexible control options for network configuration and monitoring.

6.1 Management Options

You can manage your switch using one of the following methods:

- **Aruba Instant On Cloud Management:** Access and manage your network from anywhere using the Aruba Instant On mobile app or web portal. This provides centralized control and monitoring for your network devices.
- **Local Web GUI:** For local management, you can access the switch's web-based graphical user interface (GUI) directly from a connected computer. Refer to the Quick Start Guide for initial access details (typically involves connecting to a default IP address).

6.2 Key Features

The Aruba ION 1930 switch offers several advanced features for robust and secure network operation:

- **High Performance:** Features 48 Gigabit Ethernet ports and 4 SFP+ ports with a 176 Gbit/s switching capacity.
- **Power over Ethernet (PoE):** Selected models, including this one, support Class 4 PoE with a 370W power budget to power compatible devices.
- **Robust Security:** Includes integrated security features such as IEEE 802.1Q VLAN support, port access control, protection against ARP attacks, packet storm protection, and RADIUS authentication and evaluation.
- **Smarter Connectivity:** SFP and SFP+ connections allow for network expansion and high-speed uplinks, suitable for connecting buildings or different floors.

7. MAINTENANCE

Regular maintenance helps ensure the longevity and optimal performance of your switch.

- **Cleaning:** Keep the device clean and free of dust. Use a soft, dry cloth to wipe the exterior. Do not use liquid or aerosol cleaners.
- **Firmware Updates:** Periodically check the Aruba Instant On support website for firmware updates. Keeping your firmware up-to-date ensures you have the latest features, performance improvements, and security patches.
- **Environmental Checks:** Ensure the operating environment remains within specified temperature and humidity ranges. Verify that ventilation openings are clear.

8. TROUBLESHOOTING

If you encounter issues with your switch, refer to the following common troubleshooting steps:

- **No Power:**
 - Check if the power cord is securely connected to both the switch and the power outlet.
 - Verify that the power outlet is functional.
- **No Network Connectivity:**
 - Check the Ethernet cables for secure connections and damage.
 - Verify the status LEDs on the switch ports. A solid green or amber light usually indicates a link, while a blinking light indicates activity.
 - Ensure connected devices are powered on and configured correctly.
- **Slow Performance:**
 - Check for network congestion or excessive traffic.
 - Ensure all cables are of appropriate quality and length.
 - Verify that the switch firmware is up-to-date.
- **Accessing Management Interface:**
 - Ensure your computer is on the same network segment as the switch.
 - Verify the IP address configuration of your computer and the switch.
 - Try clearing your browser's cache or using a different browser.

- **Factory Reset:** If issues persist, you may need to perform a factory reset. Refer to the Quick Start Guide or the Aruba Instant On documentation for instructions on how to perform a factory reset. **Note:** A factory reset will erase all configurations.

9. SPECIFICATIONS

Feature	Specification
Model Number	1930 48G 4SFP+ PoE 370W
Brand	Aruba a Hewlett Packard Enterprise company
Number of Ports	48 x RJ-45 Gigabit Ethernet, 4 x SFP+
PoE Power Budget	370W (Class 4 PoE)
Switching Capacity	176 Gigabits Per Second
MAC Table Size	16000 entries
Interface Type	SFP+
Form Factor	1U Rack-mountable
Case Material	Metal
Color	White
Product Dimensions	12.7 x 17.42 x 1.73 inches (32.26 x 44.25 x 4.39 cm)
Item Weight	2.2 pounds (1 Kilogram)
Manufacturer	Hewlett Packard Enterprise
UPC	190017356303, 190017356334
Compatible Devices	Printer, Laptop, Computer, Server, Network Camera, VoIP Phone, Network Storage

10. WARRANTY AND SUPPORT

For information regarding the product warranty, technical support, and additional resources, please refer to the official Aruba Instant On website or contact your authorized Aruba reseller.

Online Resources:

- Visit the [Aruba Instant On website](#) for product documentation, firmware downloads, and support forums.
- Consult the [Aruba Instant On Support page](#) for contact information and service options.