

YESKAMO W05-US3004-1TB

YESKAMO 5MP NVR WiFi Security Camera System W05-US3004-1TB Instruction Manual

Model: W05-US3004-1TB

1. INTRODUCTION

This manual provides detailed instructions for the installation, operation, and maintenance of your YESKAMO 5MP NVR WiFi Security Camera System. Please read this manual thoroughly before using the product to ensure proper setup and functionality.

2. PACKAGE CONTENTS

Verify that all items listed below are included in your package. If any items are missing or damaged, please contact customer support.

Overall Displaying



8 Channel NVR Recorder



3MP Floodlight Cams x4



DC 12V 2A Power Adapter x 1
(for NVR)



Mouse / Ethernet Cable



DC 12V 1A Power Adapter x 4
(for cameras)



1TB Hard Drive
(pre-installed)



User Manual



Screw / Warning Card



Package

Image 2.1: Illustration of the YESKAMO 5MP NVR WiFi Security Camera System package contents, including the 8-channel NVR, four 3MP floodlight cameras, power adapters, mouse, Ethernet cable, 1TB hard drive, user manual, screws, and warning card.

- 8 Channel NVR Recorder
- 3MP Floodlight Cameras (x4)
- DC 12V 2A Power Adapter (for NVR)
- DC 12V 1A Power Adapters (x4, for cameras)
- Mouse
- Ethernet Cable
- 1TB Hard Drive (pre-installed)
- User Manual
- Screws / Warning Card

3. PRODUCT OVERVIEW

Familiarize yourself with the components of your security camera system.



Image 3.1: Overview of the YESKAMO 5MP NVR WiFi Security Camera System, showing the NVR unit, four wireless cameras, a 1TB hard drive, and a smartphone displaying live camera feed.

3.1 Camera Components



Image 3.2: Detailed diagram of a YESKAMO camera, highlighting key features such as the 5dBi antenna, IR cut filter, floodlights, IR LEDs, microphone, speaker, 2-axis mounting bracket, RJ45 Ethernet port, and power-in port. The camera features IP66 weatherproof metal housing.

- **5dBi Antenna:** For wireless signal transmission.
- **IR Cut Filter:** Automatically switches between day and night vision.
- **2pcs Floodlight:** Provides color night vision and acts as a deterrent.
- **2pcs IR LED:** Enables infrared night vision up to 100ft.
- **Microphone:** For audio input (pick up audio).
- **Speaker:** For audio output (transmit sound, two-way audio).
- **2-Axis Mounting Bracket:** Allows flexible camera positioning.
- **RJ45 Ethernet Port:** For wired network connection (optional).
- **Power-in Port:** For DC 12V power supply.
- **IP66 Weatherproof Metal Housing:** Ensures durability for outdoor use.

3.2 NVR (Network Video Recorder)

The NVR is the central recording and management unit for your security system. It features an 8-channel capacity

and comes with a pre-installed 1TB hard drive for storage.

4. SETUP GUIDE

4.1 Initial Power-Up and Connection

1. Connect the NVR to a monitor using an HDMI or VGA cable.
2. Connect the NVR to a power outlet using its DC 12V 2A power adapter.
3. Connect the included mouse to the NVR's USB port.
4. Connect each camera to a power outlet using its DC 12V 1A power adapter.
5. The cameras will automatically pair with the NVR.



Image 4.1: Diagram illustrating the auto-pair system setup, showing a camera wirelessly connecting to the NVR, which is connected to a monitor for local surveillance. It also depicts the NVR connected to a router for remote access via various devices.

4.2 Network Connection for Remote View

To access your system remotely via a smartphone, tablet, or computer, connect the NVR to your internet router using the provided Ethernet cable.

1. Connect one end of the Ethernet cable to the NVR's RJ45 port.
2. Connect the other end to an available LAN port on your internet router.
3. Follow the on-screen instructions on the NVR monitor to configure network settings if necessary.
4. Download the official YESKAMO app on your mobile device or client software on your computer.
5. Register an account and add your NVR by scanning the QR code or entering the device ID.

5. OPERATING INSTRUCTIONS

5.1 Live View and Recording

Once the system is set up, you can view live feeds from all connected cameras on your monitor or through the remote viewing application.

5.2 Human Detection and Siren Alarm

The system features smart AI human detection to minimize false alerts. When human motion is detected, the system can trigger a siren alarm and floodlights, and send instant app notifications with intruder snapshots.

Smarter AI Human detection

Avoiding 99% useless and false alert triggered by leaves, sunrise and sunset. Instant App alert with Color Intruder Snapshot will be sent once human detected.

09:41PM camera detects unusual human activity

Body Detection
2019-06-03 16:38:53

Body Detection
2019-06-03 16:38:00

Body Detection
2019-06-03 16:37:35

Body Detection
2019-06-03 16:37:08

Body Detection

Image 5.1: Diagram illustrating the smart AI human detection feature. The camera detects unusual human activity, avoiding false alerts from animals or environmental factors. An app notification with a snapshot is sent upon detection.



Image 5.2: Illustration of the floodlight and siren alarm in action. Upon human activation, the floodlight turns on, and an app notification is sent, providing dual protection by illuminating dark areas and deterring intruders.

5.3 Two-Way Audio

Each camera is equipped with a microphone and speaker, enabling two-way audio communication. You can listen to audio from the camera's location and speak through the camera using the remote viewing application.



Two-way Audio

Talk with Your Visitors from Anywhere

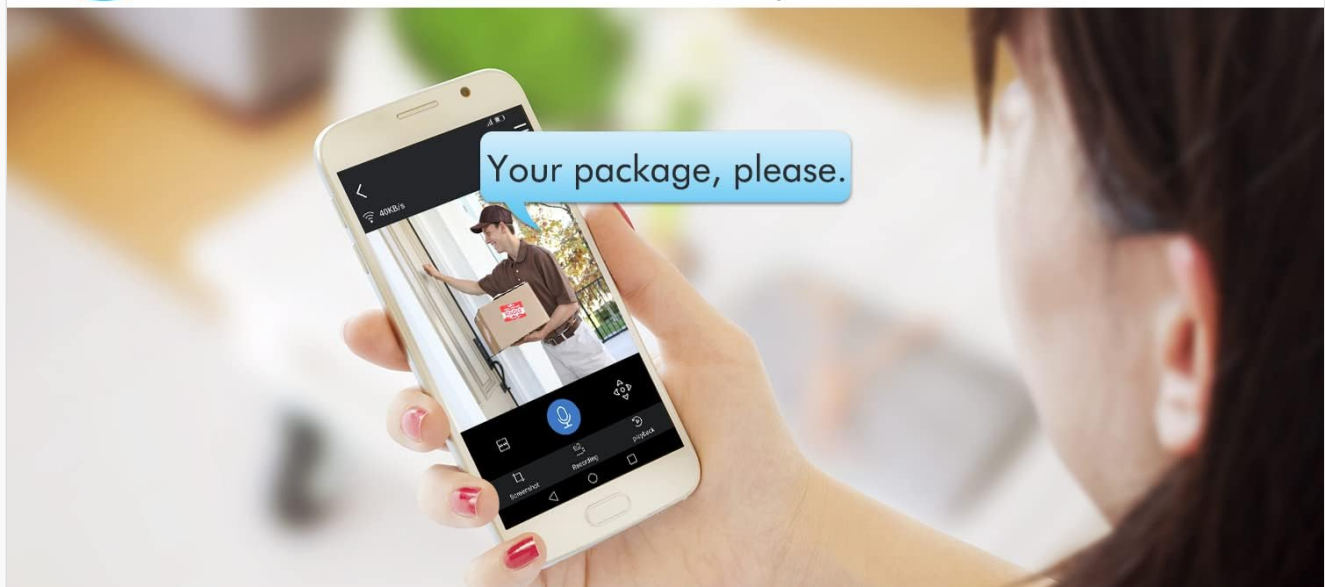


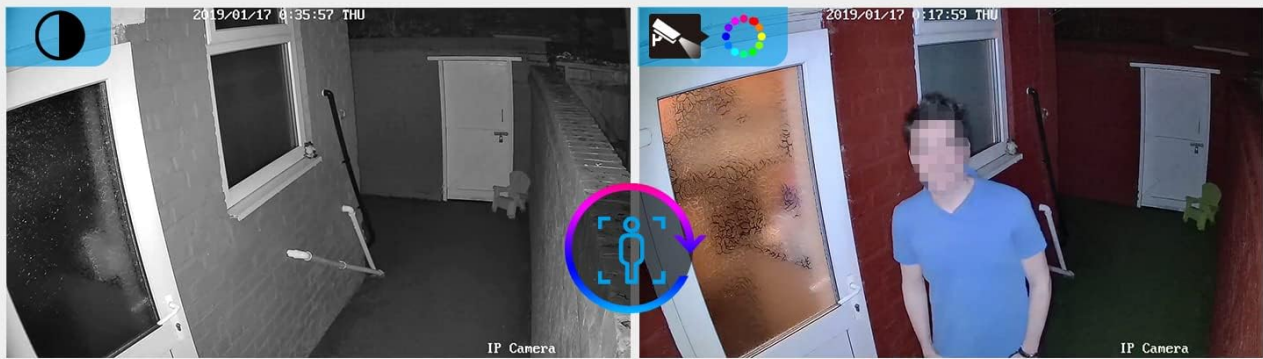
Image 5.3: Depiction of the two-way audio feature, showing a user interacting with a delivery person at their door via the camera and a smartphone app.

5.4 Night Vision Capabilities

The cameras offer advanced night vision options:

- **Infrared Night Vision:** Provides clear black and white video in complete darkness up to 100ft using IR LEDs.
- **Color Night Vision:** When floodlights are activated (either manually or by human detection), the cameras can capture full-color video even in low-light conditions.

See Color at Night with floodlight on



3MP Super HD with Wide Angle View



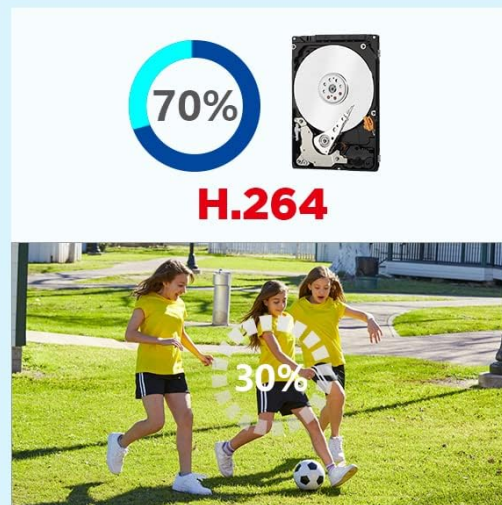
Image 5.4: Comparison of night vision modes, showing a black and white IR night vision view versus a color night vision view with floodlight on. Also illustrates the 3MP Super HD resolution with a 100-degree wide-angle view during daytime.

5.5 Expanding Your System

The 8-channel NVR supports up to 8 cameras. You can add up to 4 additional YESKAMO wireless cameras to expand your surveillance coverage. These cameras will also auto-pair and transfer audio and video wirelessly to the NVR.

Advanced H.265 compression

Save more than 50% Capacity, 3 times faster uploading



Add 4 More YESKAMO Wireless Cameras

Cameras will pick up audio and videos, and transfer to NVR wirelessly



Image 5.5: Illustration demonstrating the efficiency of H.265 compression, saving over 50% capacity compared to H.264. Also shows the capability to add up to four more YESKAMO wireless cameras to the system.

6. MAINTENANCE

6.1 Hard Drive Management

The system utilizes advanced H.265 video compression, which significantly reduces storage space requirements (over 50% compared to H.264) and allows for faster uploading. The pre-installed 1TB hard drive provides ample storage. Regularly check the NVR settings for hard drive status and consider backing up important footage.

6.2 Cleaning

- Wipe camera lenses with a soft, damp cloth to ensure clear image quality.
- Keep the NVR unit free from dust and ensure proper ventilation.

6.3 Firmware Updates

Periodically check the YESKAMO official website or app for available firmware updates to ensure optimal

performance and access to new features. Follow the provided instructions carefully when performing updates.

7. TROUBLESHOOTING

If you encounter issues with your system, refer to the following common problems and solutions:

Problem	Possible Cause	Solution
No video display on monitor	Loose cable connection, NVR not powered on, monitor input incorrect.	Check HDMI/VGA cable, ensure NVR power adapter is connected, select correct input on monitor.
Cameras not showing video	Camera not powered, out of range, interference, not paired.	Ensure camera power adapters are connected, move camera closer to NVR, check for obstructions, re-pair camera if necessary.
No remote access	NVR not connected to internet, incorrect network settings, app issues.	Verify NVR is connected to router via Ethernet, check NVR network settings, ensure router has internet access, restart app/NVR.
False alarms from human detection	Sensitivity too high, environmental factors (e.g., strong light changes, moving branches).	Adjust detection sensitivity in NVR/app settings, reposition camera to avoid common false alarm triggers.
No audio from camera	Microphone disabled, volume too low, camera malfunction.	Check audio settings in NVR/app, increase volume, test two-way audio.

8. SPECIFICATIONS




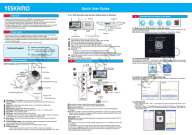
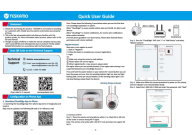

Feature	Detail
Model Number	W05-US3004-1TB
Brand	YESKAMO
Number of Channels	8
Camera Resolution	5MP (2K UltraHD)
Hard Drive Capacity	1 TB (pre-installed)
Recording Mode	Motion Detection
Video Compression	H.265
Night Vision	IR Night Vision (100ft), Color Night Vision (with floodlight)
Audio	Two-Way Audio
Weatherproof Rating	IP66
Product Dimensions (NVR)	30.5 x 15.2 x 27.9 cm (approx.)
UPC	631851240736

9. WARRANTY AND SUPPORT

For warranty information, technical support, or any inquiries regarding your YESKAMO security system, please refer to the warranty card included in your package or visit the official YESKAMO website. Contact details for customer service are typically provided on the product packaging or within the user manual.

© 2023 YESKAMO. All rights reserved.

Related Documents - W05-US3004-1TB

	<p>YESKAMO P912-US3004-2T Quick User Guide</p> <p>A concise guide to setting up and using the YESKAMO P912-US3004-2T NVR monitor and camera system, covering connections, app setup, remote viewing, and two-way audio.</p>
	<p>YESKAMO Security Camera Kits Full User Manual</p> <p>A comprehensive user manual for YESKAMO Security Camera Kits, detailing installation, setup, and features like AI human detection and remote viewing.</p>
	<p>YESKAMO Wifi Floodlight Security Camera Quick User Guide</p> <p>A concise guide for setting up and using the YESKAMO Wifi Floodlight Security Camera system, including NVR connection, remote viewing via mobile app, and troubleshooting tips.</p>
	<p>YESKAMO Wifi Floodlight Security Camera System Quick User Guide</p> <p>Concise guide to setting up and using the YESKAMO Wifi Floodlight Security Camera System, including NVR recorder, remote viewing, and installation instructions.</p>
	<p>YESKAMO Quick User Guide: Setting Up Your Wireless Security Camera</p> <p>A concise guide to setting up and installing your YESKAMO wireless security camera, including app configuration, Wi-Fi connection, and mounting instructions. Learn how to connect your device for home surveillance.</p>
	<p>YESKAMO Wifi Floodlight Security Camera System Quick Start Guide</p> <p>A quick guide to setting up and using the YESKAMO Wifi Floodlight Security Camera system, including NVR connection, remote viewing, troubleshooting, and advanced features.</p>