

Manuals+

[Q & A](#) | [Deep Search](#) | [Upload](#)

manuals.plus /

› [SinoTrack](#) /

› [SinoTrack ST-907L 4G GPS Tracker User Manual](#)

SinoTrack ST-907L GPS Tracker

SinoTrack ST-907L 4G GPS Tracker User Manual

Model: ST-907L GPS Tracker

Brand: SinoTrack

1. PRODUCT OVERVIEW

The SinoTrack ST-907L is a compact 4G GPS tracking device designed for a wide range of vehicles, including cars, motorcycles, trucks, and taxis. It provides robust real-time location tracking, remote engine cut-off capabilities for enhanced security, and a variety of alert notifications to keep you informed. The device ensures reliable positioning by supporting both 4G and 2G networks and comes with access to a lifetime tracking platform.



The SinoTrack ST-907L GPS Tracker, a compact relay-style device, is designed for discreet installation and real-time vehicle tracking, managed conveniently through a dedicated mobile application.



This image illustrates the primary functionalities of the SinoTrack ST-907L, including real-time tracking, historical route playback, remote engine cut-off, geofencing, shock alerts, sleep mode for power saving, built-in battery, and overspeed alarms.

2. WHAT'S IN THE BOX

Upon opening the package, you will find the following components:

- ST-907L 4G GPS Tracker Unit
- User Manual
- Wiring Harness



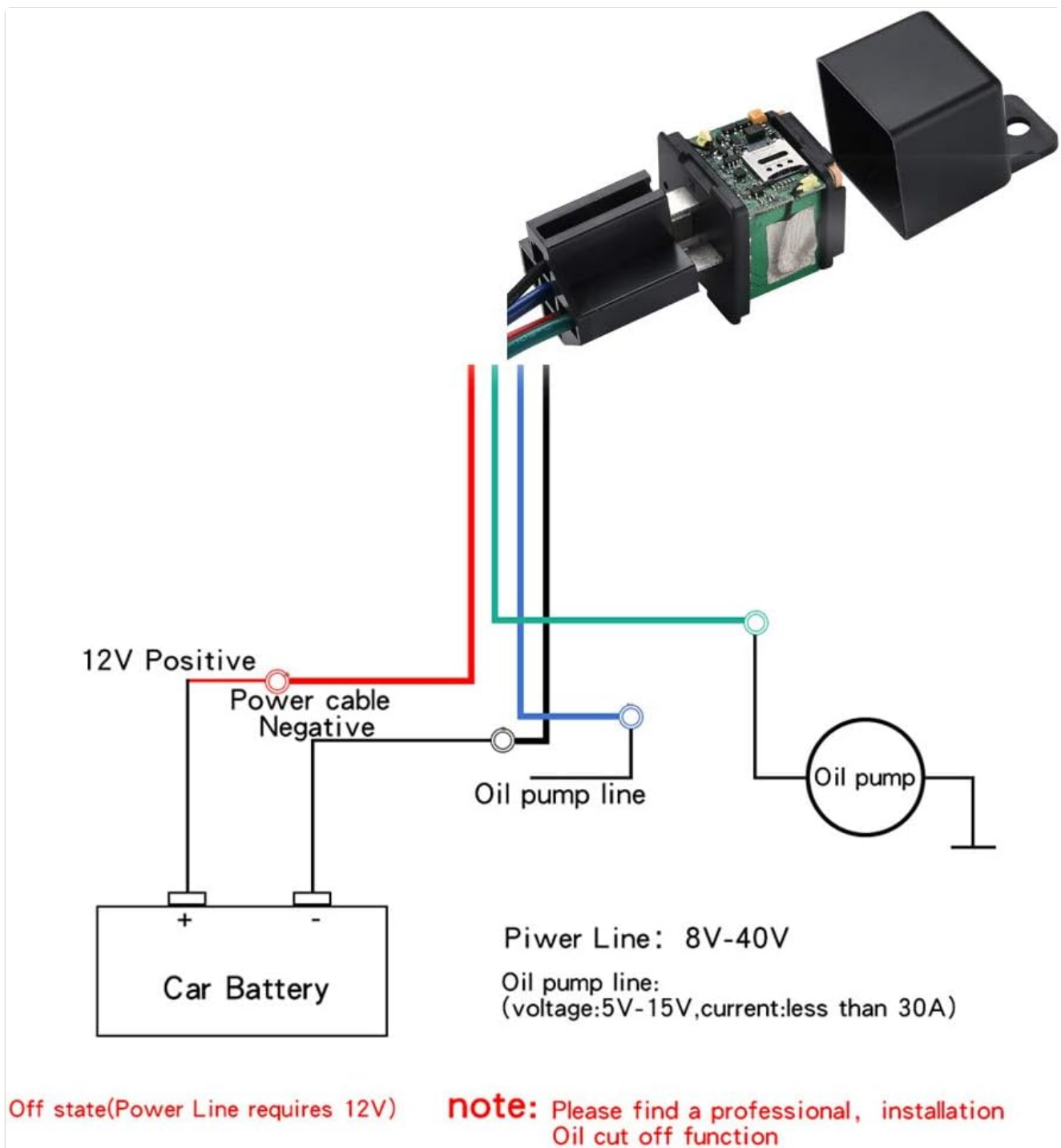
The package includes the ST-907L 4G GPS Tracker unit, a wiring harness for installation, and a user manual for detailed instructions.

3. SETUP GUIDE

Follow these steps to set up your SinoTrack ST-907L GPS Tracker:

Step 1: Activate SIM Card

Purchase a local SIM card with 4G (LTE) network functionality. Insert the new SIM card into your mobile phone to activate it and remove any PIN code. Verify that the SIM card can make calls, send text messages, and has an active internet connection. Once confirmed, carefully insert the activated SIM card into your tracker's SIM slot.



The tracker's internal components, including the SIM card slot, are designed for easy access during SIM card insertion.

Step 2: Power On the Tracker

Charge the device for approximately 1 hour initially. The yellow and blue indicator lights will begin flashing as the device searches for network and GPS signals. Allow about 5 minutes in an area with good reception (e.g., near a window or outdoors) for both lights to become solid. If the yellow light continues to flash, relocate the device to an area with better network coverage. Note that if a GPS signal is unavailable, the device will obtain its location using LBS (Location Based Service).

Step 3: Configure APN Settings

You need to know your tracker's SIM card's APN (Access Point Name) details, which can be obtained from your SIM card provider. Send text messages from another phone number to the tracker's SIM card number to configure the APN.

- **For APN without username and password:** Send the text command: **8030000 [your_APN]** (e.g., 8030000 everywhere). The tracker will reply with "SET OK".

- **For APN with username and password:** Send the text command: **8030000 [your_APN] [APN_username] [APN_password]** (e.g., 8030000 everywhere eesecure secure).

Please note that APN settings vary by SIM card provider. Apply the correct formula based on your actual APN details.

Step 4: Set GPRS Mode

Send the text command **7100000** to the device to activate GPRS mode. After approximately 30 seconds, both the blue and orange indicator lights should remain ON, signifying that the tracker is active and ready for online tracking. You can then log in to the SinoTrackPro web platform or mobile application using your tracker's ID number (found on the product label) as the username and "123456" as the default password.

If the device is online but displays a location in China, move it outdoors to an area with strong signal reception to acquire a GPS signal and update its accurate location.

Real-Time Tracking





Geofence






Support free App to use

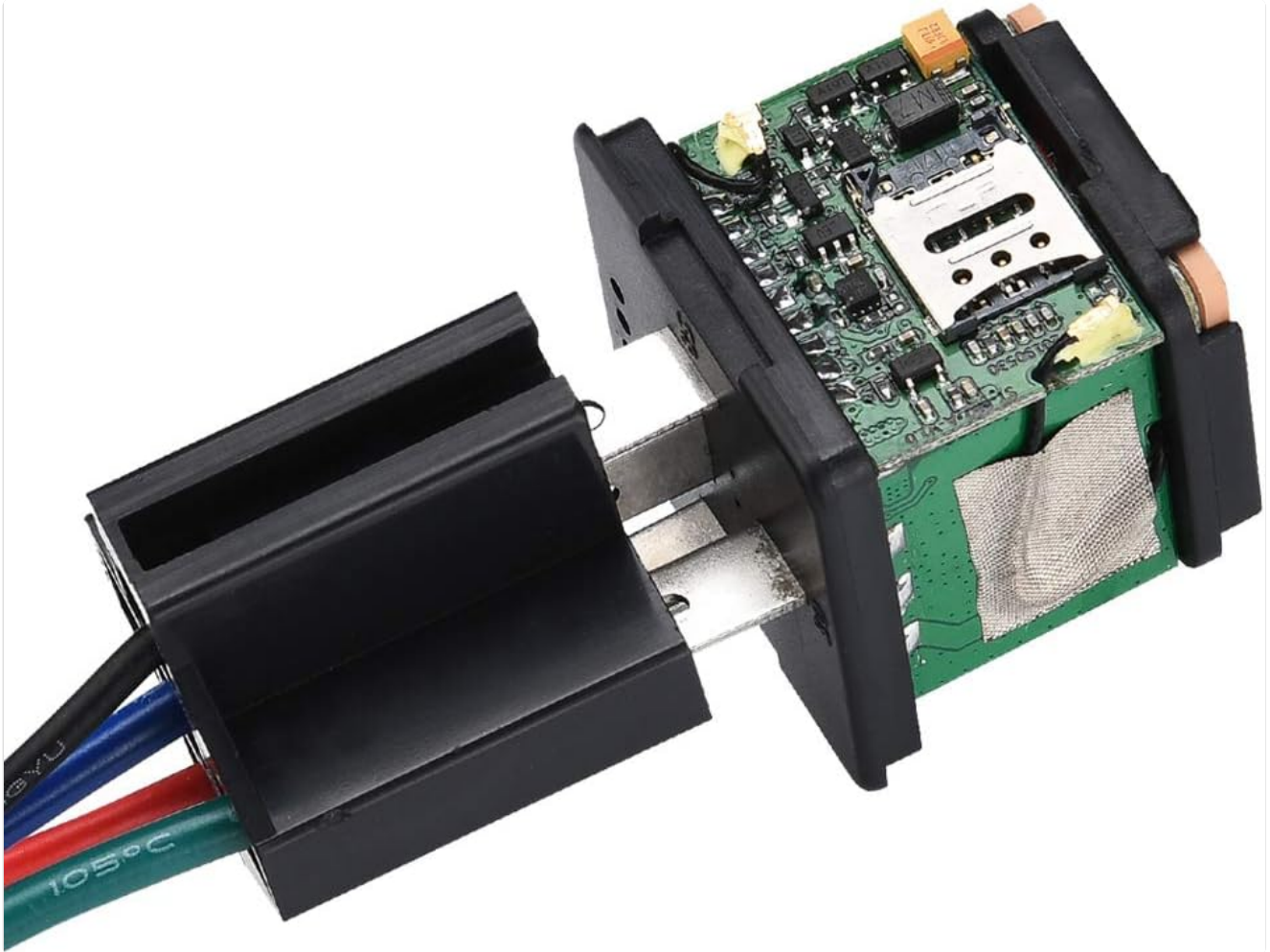
Track in real time with our free APP available for iphone and android

The SinoTrackPro app displays the current location of the vehicle on a map, along with options for real-time tracking and setting up geofence zones.

Wiring Connection

The ST-907L connects to your vehicle's electrical system. It is recommended to have a professional install the device to ensure correct wiring and functionality.

The ST-907L tracker unit is shown connected to its wiring harness, which facilitates power and control connections within the vehicle.



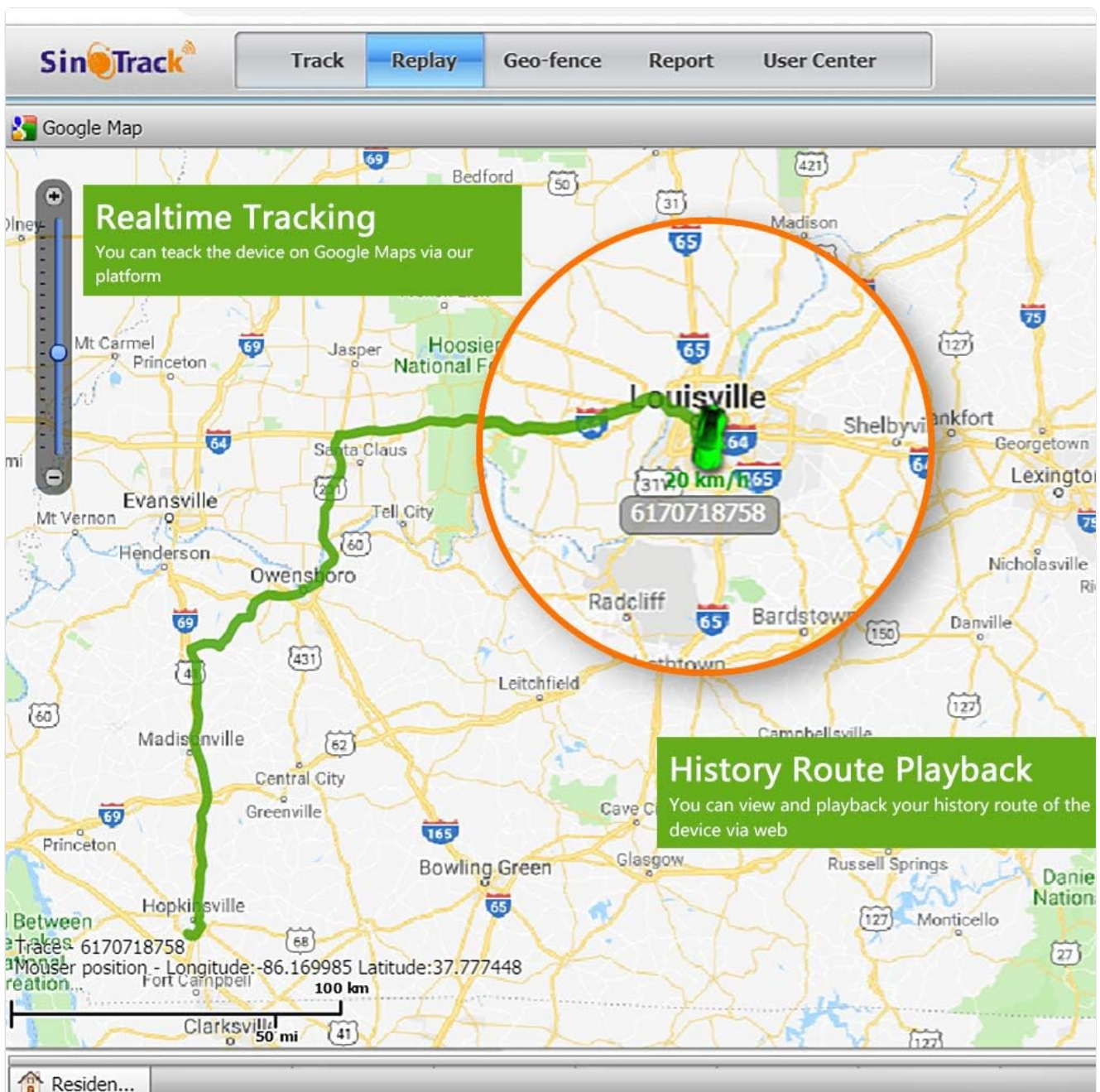
This diagram illustrates the typical wiring connections for the ST-907L, including power (12V positive and negative) and the oil pump line for remote engine cut-off. Professional installation is highly recommended.

This video demonstrates the SinoTrack ST-907L GPS Tracker, showcasing its physical appearance, wiring connections, and the remote control functionality to cut off oil and power to a vehicle.

4. OPERATING INSTRUCTIONS

Real-time Tracking

The SinoTrack ST-907L provides real-time tracking with positioning accuracy up to 10 meters, utilizing GSM LTE technology. You can monitor the device's current location through the SinoTrackPro web platform or the dedicated mobile application.



The web platform offers a comprehensive view of real-time tracking and allows users to review historical routes of the tracked vehicle.

History Route Playback

The device stores up to 2 years of tracking history. You can access and play back these historical routes on the SinoTrackPro platform to review past movements of the tracked vehicle.

Remote Engine Cut-off

In the event of vehicle theft, you can remotely cut off the engine by sending the SMS command **9400000** to the tracker. For safety, the vehicle will only stop moving once it receives the command if its speed is below 20 km/h. The engine can also be re-enabled by sending a corresponding SMS command.

Alert Notifications

The tracker supports various alert types, including:

- **Overspeed Alert:** Notifies you if the vehicle exceeds a predefined speed limit.
- **Shocking Alarm:** Alerts you to unusual vibrations or impacts.
- **Geo-fence Alerts:** Sends notifications when the vehicle enters or exits a virtual boundary you have set on the

map.

- **Low Battery Alert:** Informs you when the internal backup battery is running low.

Sleep Mode

The device features a sleep mode designed to conserve power when the vehicle is stationary for extended periods.

Backup Battery

The ST-907L is equipped with a built-in 3.7V, 50mAh backup battery, providing temporary power in case the main vehicle power is disconnected.

5. MAINTENANCE

To ensure the longevity and optimal performance of your SinoTrack ST-907L GPS Tracker, consider the following maintenance guidelines:

- **Keep Dry and Clean:** Protect the device from moisture, dust, and extreme temperatures. Avoid direct exposure to sunlight for prolonged periods.
- **SIM Card Check:** Periodically verify that the SIM card is securely inserted and remains active with sufficient balance for data and SMS services.
- **Signal Reception:** Ensure the device has an unobstructed view of the sky for consistent GPS signal reception. Avoid installing it in areas that could block satellite signals.
- **Firmware Updates:** Check the SinoTrackPro platform or official website for any available firmware updates to ensure the device operates with the latest features and improvements.

6. TROUBLESHOOTING

If you encounter issues with your SinoTrack ST-907L, refer to the following common problems and solutions:

Device Not Online

- **Check Settings:** Send the SMS command **RCONF** to the device. Verify that the APN, IP address, and Port settings in the reply match those provided in the user manual or by your SIM card provider.
- **SIM Card Status:** Ensure the SIM card is active, has sufficient data/SMS balance, and supports 4G/2G networks.
- **Signal Strength:** Move the device to an open area with good cellular network and GPS signal coverage.

Indicator Lights Flashing / No Signal

- **Yellow Light Flashing (No Network):** This indicates the device cannot find a cellular network. Check SIM card activation, network coverage in your area, and try moving the device.
- **Blue Light Flashing (No GPS Signal):** This means the device is not receiving a GPS signal. Ensure the device has a clear, unobstructed view of the sky. It may take several minutes to acquire a GPS fix, especially after initial setup or prolonged power-off.

Incorrect Location (Shows China)

If the device is online but its reported location is in China, it is likely using LBS (Location Based Service) because it has not acquired a GPS signal. Take the device outdoors to an area with good GPS signal reception to allow it to update to an accurate GPS location.

Remote Engine Cut-off Not Working

- **Vehicle Speed:** Ensure the vehicle's speed is below 20 km/h when sending the cut-off command. This safety

feature prevents engine cut-off at high speeds.

- **SMS Command:** Double-check the SMS command syntax (**9400000**) and confirm that the SIM card in the tracker has SMS sending capability.

7. SPECIFICATIONS

Feature	Specification
Product Dimensions	1.22 x 1.22 x 2.24 inches
Item Weight	1.76 ounces
Model Number	ST-907L GPS Tracker
Batteries	1 Lithium Polymer batteries required (included)
Connectivity Technologies	GPS, LTE, GSM
Supported Application	SinoTrackPRO
Manufacturer	SINOTRACK
Country of Origin	China
Date First Available	June 9, 2020

8. WARRANTY AND SUPPORT

While specific warranty details are typically provided with the product packaging, SinoTrack offers a lifetime tracking service through its SinoTrackPro platform. For further assistance, technical support, or inquiries regarding your device, please refer to the contact information provided in the physical user manual included with your purchase or visit the official SinoTrack website.

You can also find more information and support by visiting the [SinoTrack Store](#).