



Manuals.plus /

› Amagic /

› Amagic 10" x 4" Outdoor Flameless Candles Instruction Manual

Amagic 4"x10"10"

Amagic 10" x 4" Outdoor Flameless Candles Instruction Manual

Model: 4"x10"10" | Brand: Amagic

IMPORTANT SAFETY INFORMATION

- Use only AA batteries (not included). Ensure correct polarity when inserting.
- Do not mix old and new batteries, or different types of batteries.
- Remove batteries if the candles will not be used for an extended period to prevent leakage.
- While designed for outdoor use and waterproof, avoid prolonged soaking in water to prevent damage to internal components.
- Keep out of reach of small children and pets.
- Do not attempt to disassemble or modify the candles or remote control.

PACKAGE CONTENTS

- 2 x Amagic 10" x 4" Flameless Candles
- 1 x Remote Control

SETUP

1. Battery Installation

Each flameless candle requires 3 x AA batteries (not included). To install:

1. Locate the battery compartment cover at the bottom of the candle.
2. Twist the cover counter-clockwise to unlock and remove it.
3. Insert 3 AA batteries, ensuring the correct positive (+) and negative (-) orientation as indicated inside the compartment.
4. Replace the cover and twist clockwise to lock it securely.

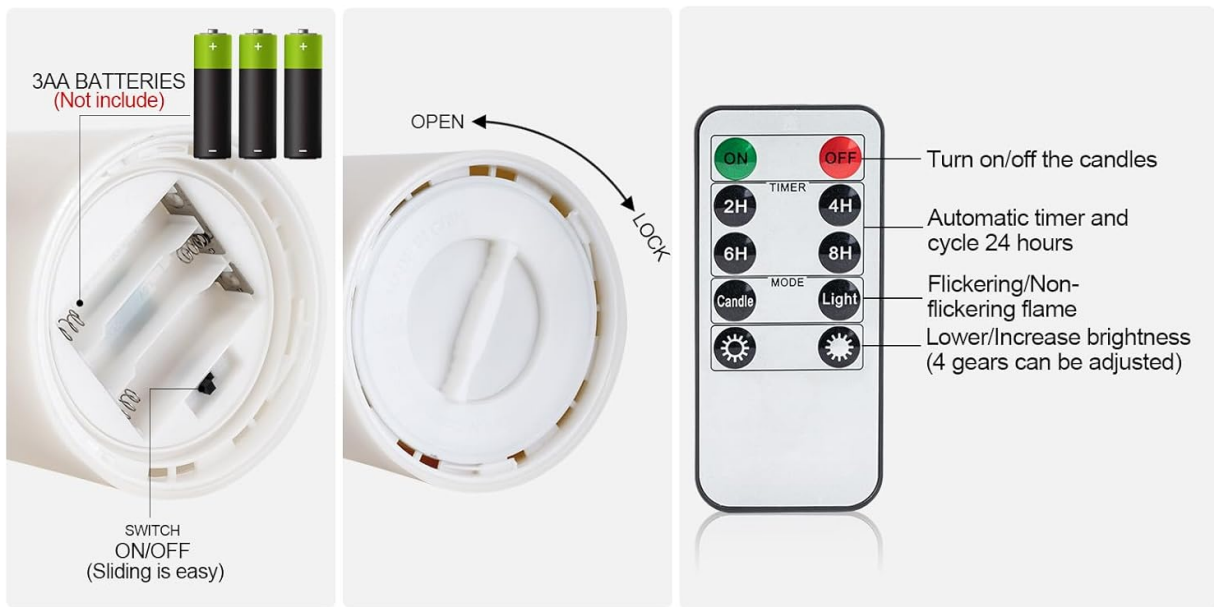


Figure 1: Battery compartment with 3 AA battery slots.

2. Placement

These flameless candles are suitable for both indoor and outdoor use. For outdoor placement, consider using them within lanterns or in protected areas to maximize their lifespan. While waterproof, avoid submerging them in water.



Figure 2: Flameless candles placed inside lanterns for outdoor ambiance.

OPERATING INSTRUCTIONS

Remote Control Functions

The included remote control allows for convenient operation of your flameless candles. Ensure the remote has a working battery and is pointed towards the candles for optimal response.

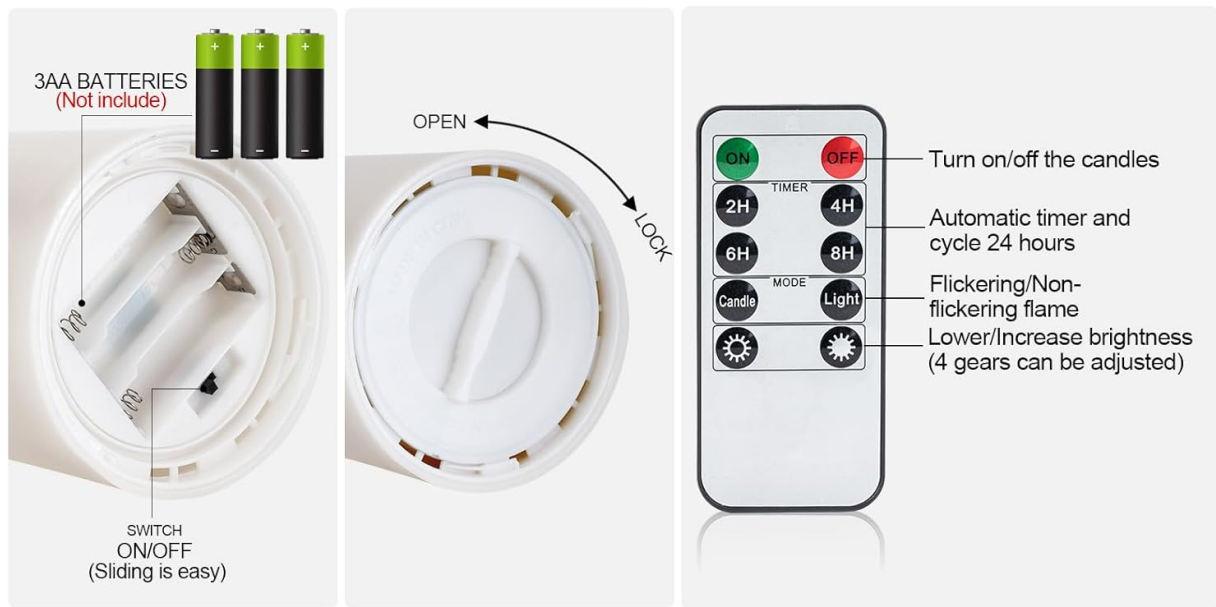


Figure 3: Remote control layout and functions.

Button	Function
ON	Turns the candles on.
OFF	Turns the candles off.
2H / 4H / 6H / 8H	Activates the timer function for 2, 4, 6, or 8 hours. The candles will automatically turn off after the set duration and turn on again at the same time the next day.
Candle (Mode)	Sets the light mode to a flickering flame effect.
Light (Mode)	Sets the light mode to a steady glow.
Brightness Up / Down	Adjusts the brightness level of the light (4 adjustable gears).

Video: Amagic Outdoor Candles with Timer

Your browser does not support the video tag.

This video demonstrates the features and functionality of Amagic outdoor flameless candles, including their timer options and long-lasting performance.

MAINTENANCE

Cleaning

To clean the candles, gently wipe them with a soft, dry cloth. Do not use abrasive cleaners or immerse them in water.

Battery Replacement

When the light dims or the candles stop responding to the remote, it's time to replace the batteries. Follow the battery installation steps in the 'Setup' section.

Storage

If storing the candles for an extended period, remove all batteries to prevent potential leakage and damage. Store in a cool, dry place away from direct sunlight.

TROUBLESHOOTING

- **Candles not turning on:** Ensure batteries are correctly installed and not depleted. Check if the remote control battery needs replacement. Make sure there is a clear line of sight between the remote and the candles.
- **Remote control not responding:** Verify the remote's battery is functional. Point the remote directly at the candles. Reduce the distance between the remote and the candles.
- **Light is dim or inconsistent:** Replace the batteries in the candles.
- **Water inside the candle:** Although designed to be waterproof, prolonged submersion or exposure to extreme weather conditions can compromise the seal. If water ingress occurs, remove batteries immediately and allow the candle to dry completely before attempting to use it again.

SPECIFICATIONS

Feature	Detail
Product Dimensions	4"D x 4"W x 10"H
Item Weight	1.4 Pounds (each)
Material	Plastic, Resin
Light Source Type	LED
Light Color	Amber Yellow
Power Source	Battery Powered (3 x AA batteries per candle, not included)
Control Method	Remote Control
Special Feature	Cordless, Timer Function, Flickering/Steady Mode, Brightness Adjustment
Water Resistance Level	Waterproof
Indoor/Outdoor Usage	Indoor, Outdoor
Voltage	3 Volts
Number of Items	2

WARRANTY AND SUPPORT

For warranty information or product support, please refer to the packaging or contact Amagic customer service directly. Contact details can typically be found on the manufacturer's website or product documentation.

