

Manuals+

[Q & A](#) | [Deep Search](#) | [Upload](#)

manuals.plus /

› [MOMAX](#) /

› [MOMAX Space True Wireless Omni-Directional Bluetooth Speaker User Manual](#)

MOMAX BS1

MOMAX Space True Wireless Omni-Directional Bluetooth Speaker User Manual

Model: BS1

INTRODUCTION

Thank you for purchasing the MOMAX Space True Wireless Omni-Directional Bluetooth Speaker. This manual provides detailed instructions for setting up, operating, and maintaining your speaker to ensure optimal performance and longevity. Please read this manual thoroughly before using the product and keep it for future reference.



Image: The Momax Space True Wireless Speaker shown alongside its retail packaging, highlighting its sleek design and compact form factor.

SAFETY INFORMATION

To ensure safe operation and prevent damage, please observe the following precautions:

- Do not expose the speaker to extreme temperatures, direct sunlight, or high humidity.
- Avoid dropping or subjecting the speaker to strong impacts.
- Do not disassemble, repair, or modify the speaker yourself. Refer all servicing to qualified personnel.
- Keep the speaker away from water and other liquids. Although it is listed as waterproof, prolonged submersion or exposure to strong jets of water should be avoided.
- Use only the specified charging cable and adapter.
- Keep out of reach of children.

PACKAGE CONTENTS

Please check the package contents upon unboxing:

- 1 x MOMAX Space True Wireless Omni-Directional Bluetooth Speaker
- 1 x USB Charging Cable
- 1 x User Manual (this document)

PRODUCT OVERVIEW

Familiarize yourself with the various parts of your MOMAX Space speaker.

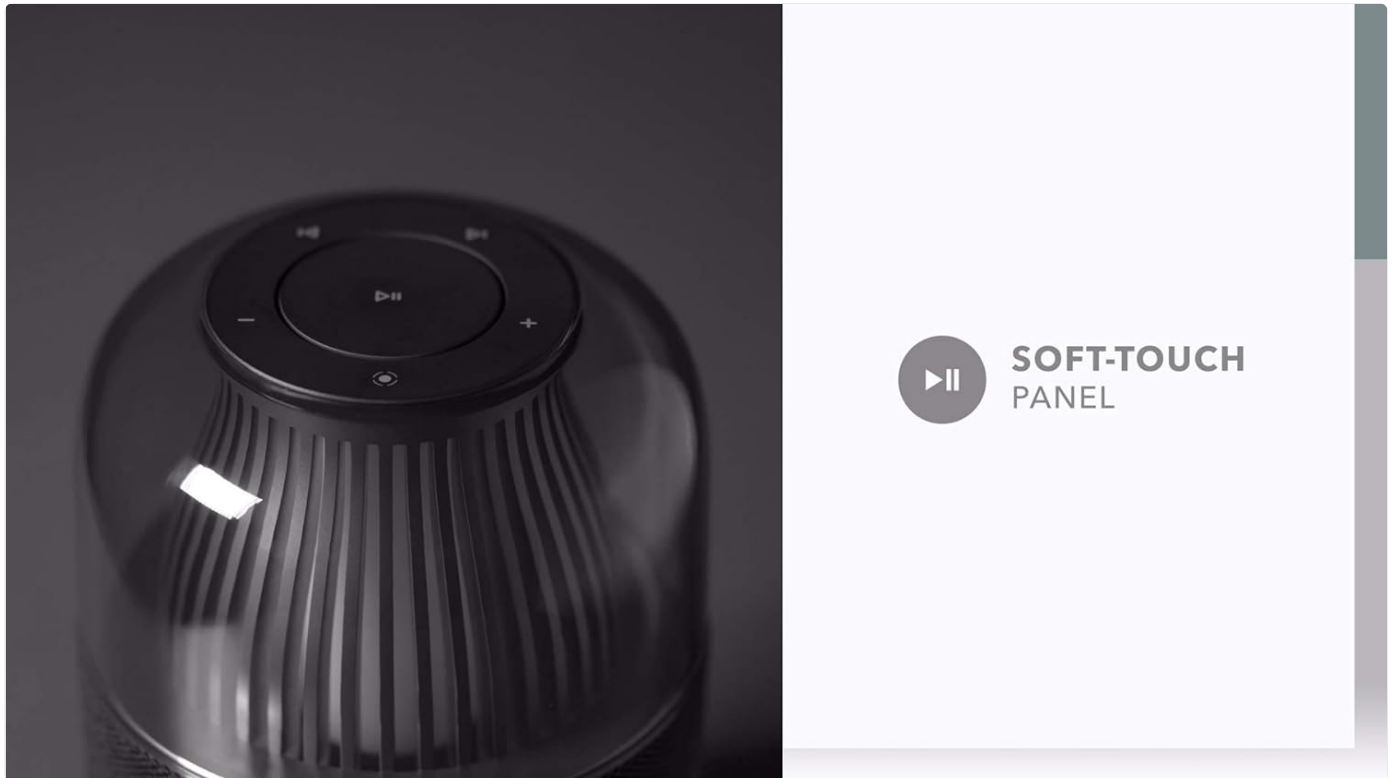


Image: A close-up view of the speaker's top panel, illustrating the intuitive soft-touch controls for playback and calls.

- **Soft-Touch Control Panel:** Located on the top, for managing playback, volume, and calls.
- **3-Inch Super-Large Speaker:** Delivers powerful and delicate sound.
- **Transparent Acoustic Chamber:** Houses the speaker and provides ambient LED lighting.
- **Fabric-covered Base:** Durable and aesthetically pleasing.
- **Charging Port:** (Location not specified, assume standard USB-C/Micro-USB)
- **TF Card Slot:** For direct audio playback from a memory card.
- **AUX Input:** For wired audio connection.
- **Built-in Microphone:** For hands-free calling.

SETUP

Charging the Speaker

Before first use, fully charge the speaker. Connect the provided USB charging cable to the speaker's charging port and the other end to a USB power adapter (5V) or a computer's USB port. The charging indicator light will show the charging status and turn off when fully charged.

Powering On/Off

- **Power On:** Press and hold the Power button (usually integrated into the control panel) for a few seconds until you hear an audible prompt or see the indicator light illuminate.
- **Power Off:** Press and hold the Power button again for a few seconds until the speaker powers down.

OPERATING INSTRUCTIONS

Bluetooth Pairing

1. Ensure the speaker is powered on and in Bluetooth pairing mode (indicated by a flashing LED light).
2. On your device (smartphone, tablet, laptop), enable Bluetooth and search for available devices.
3. Select "MOMAX Space" from the list of devices.
4. Once paired, the speaker will provide an audible confirmation, and the LED light will stop flashing.

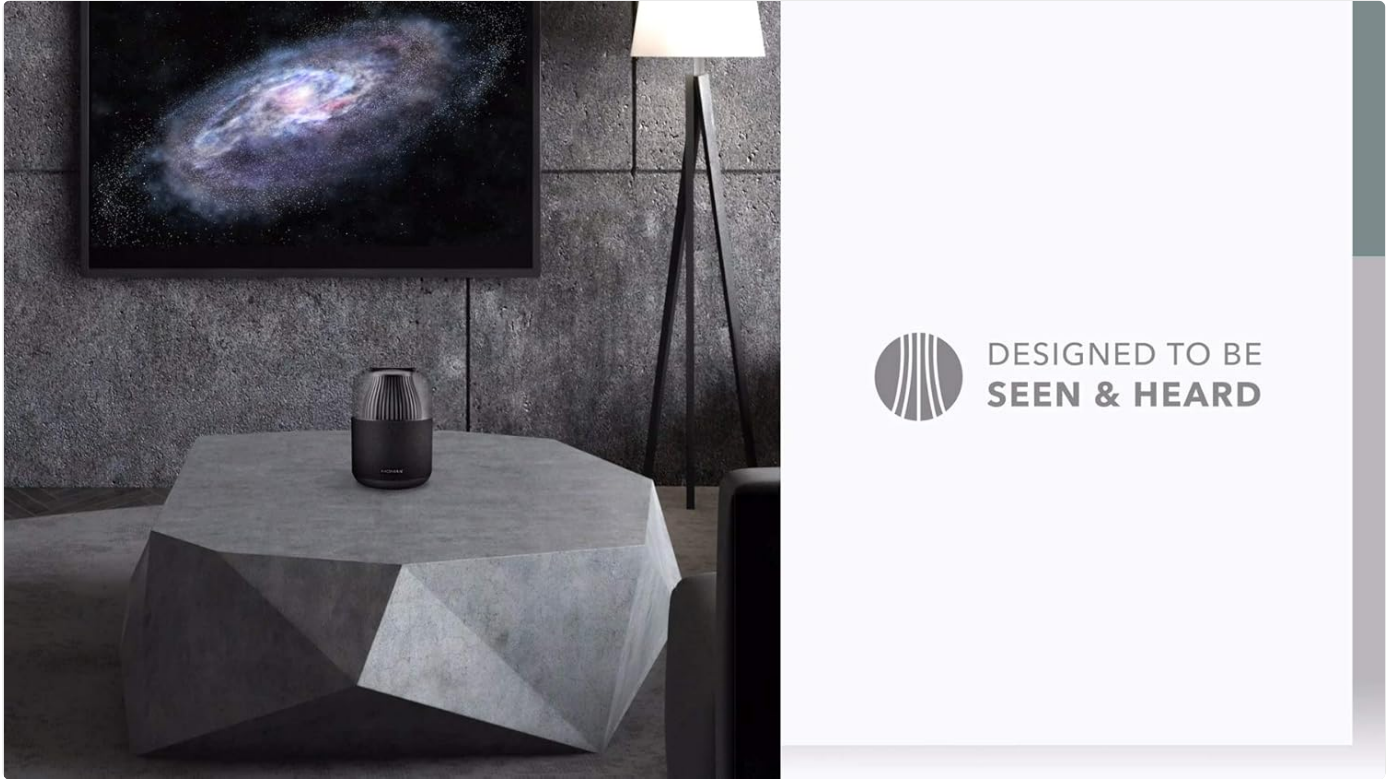


Image: The Momax Space speaker seamlessly integrated into a modern living room, demonstrating its aesthetic appeal and versatility for indoor use.

TWS (True Wireless Stereo) Interconnection

If you have two MOMAX Space speakers, you can pair them together for a true wireless stereo experience.

1. Ensure both speakers are powered on and not connected to any Bluetooth device.
2. On one speaker, double-press the TWS button (refer to product diagram if available, or assume a dedicated button/function). It will enter TWS pairing mode.
3. The two speakers will automatically connect to each other. You will hear a confirmation tone.
4. Once connected, one speaker will act as the master. Connect your device to this master speaker via Bluetooth as described above.



**360° OMNI
DIRECTIONAL
SOUND**

Image: Two Momax Space speakers positioned on either side of a laptop, illustrating their capability for True Wireless Stereo (TWS) pairing to create an immersive audio experience.

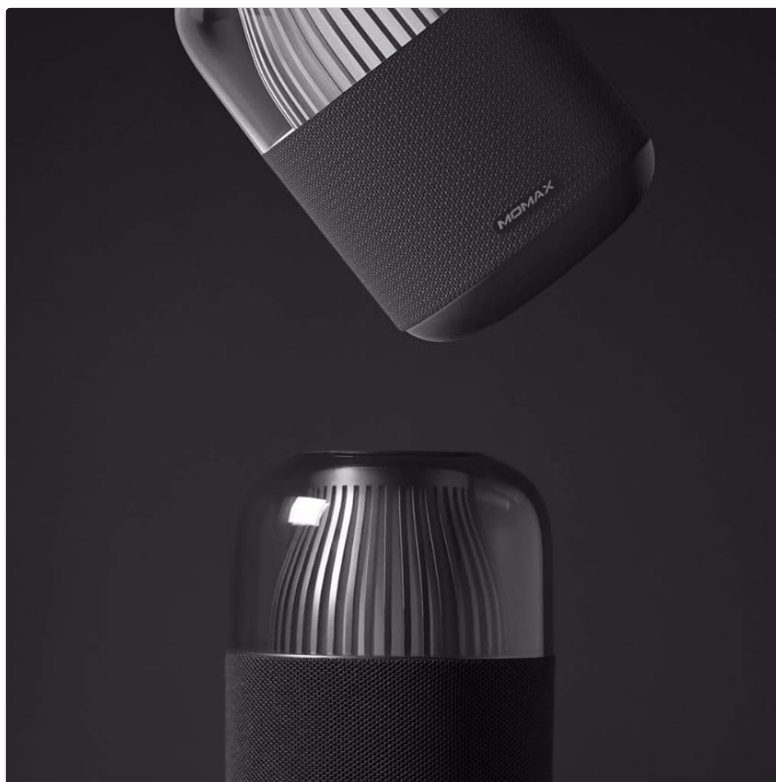
Audio Playback

- **Bluetooth:** After successful pairing, audio from your connected device will play through the speaker.
- **TF Card:** Insert a TF (microSD) card with audio files into the designated slot. The speaker will automatically switch to TF card playback mode.
- **AUX Input:** Connect an audio device using a 3.5mm AUX cable to the AUX port. The speaker will switch to AUX mode.

Hands-Free Calling

With the built-in microphone, you can answer calls directly through the speaker when connected via Bluetooth.

- **Answer Call:** Press the Play/Pause button once.
- **End Call:** Press the Play/Pause button once during a call.
- **Reject Call:** Press and hold the Play/Pause button for 2 seconds.



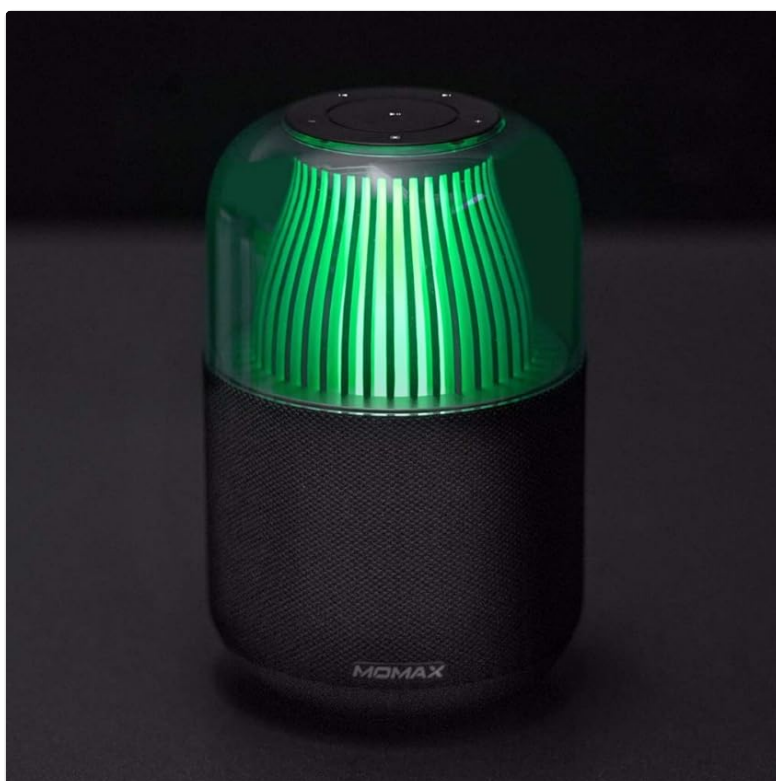
**BUILT-IN
MICROPHONE**

Image: The Momax Space speaker highlighted with an icon representing its built-in microphone, emphasizing its hands-free calling capability.

Light Effects

The speaker features four-stage warm color light effects that can breathe and flash with the music melody.

- **Toggle Light Modes:** Press the Light Effect button (if available, or assume a specific button on the control panel) to cycle through different light modes.
- **Turn Lights Off:** Continue pressing the Light Effect button until the lights turn off.



**AMBIENT
LED LIGHTING**

Image: The Momax Space speaker illuminated with vibrant green ambient LED lighting, showcasing its dynamic light effects that can synchronize with music.

Touch Controls

The intuitive touch interface allows for easy control:

- **Play/Pause:** Tap the Play/Pause icon.
- **Volume Up:** Tap the "+" icon.
- **Volume Down:** Tap the "-" icon.
- **Next Track:** Tap the ">>|" icon.
- **Previous Track:** Tap the "|<<" icon.

MAINTENANCE

Proper care will extend the life of your speaker:

- **Cleaning:** Use a soft, dry cloth to wipe the speaker's surface. Do not use abrasive cleaners, alcohol, or chemical solvents.
- **Storage:** Store the speaker in a cool, dry place away from direct sunlight and extreme temperatures when not in use for extended periods.
- **Battery Care:** To preserve battery life, avoid fully discharging the battery frequently. Charge it regularly, even if not in use.

TROUBLESHOOTING

Problem	Possible Cause	Solution
Speaker does not power on.	Low battery; Power button not pressed long enough.	Charge the speaker; Press and hold the Power button for 3-5 seconds.
Cannot pair via Bluetooth.	Speaker not in pairing mode; Device Bluetooth off; Too far from device.	Ensure speaker is flashing LED; Turn on device Bluetooth; Move speaker closer to device (within 10m).
No sound.	Volume too low; Incorrect input mode; Device not playing audio.	Increase speaker and device volume; Check if speaker is in correct mode (BT, TF, AUX); Ensure audio is playing on device.
Sound distortion.	Volume too high; Weak Bluetooth signal.	Lower volume on speaker and device; Move device closer to speaker.

SPECIFICATIONS

Model Name	Space True
Model Number	BS1
Speaker Type	Component
Connectivity Technology	Bluetooth 5.0
Audio Output Mode	Stereo

Speaker Maximum Output Power	4 Watts
Subwoofer Diameter	3 Inches
Power Source	Battery Powered
Battery Type	Lithium Ion (Included)
Voltage	5 Volts
Product Dimensions	12D x 18W x 12H centimetres
Item Weight	1.19 kg
Color	Black
Special Features	Wireless, 360 Degree Stereo Surround Sound, DSP Sound Enhancement, Four-stage Warm Color Light Effect, Built-in Microphone, TWS Interconnection, TF Card & AUX Support
Is Waterproof	True

WARRANTY AND SUPPORT

MOMAX products are designed and manufactured to the highest quality standards. For warranty information and technical support, please refer to the warranty card included in your package or visit the official MOMAX website. Keep your purchase receipt as proof of purchase for warranty claims.

For further assistance, please contact MOMAX customer service through their official channels.