

## Manuals+

[Q & A](#) | [Deep Search](#) | [Upload](#)

manuals.plus /

- › [Arteck](#) /
- › [Arteck 2.4G USB Nano Receiver User Manual](#)

## Arteck AUSB1-UK

# Arteck 2.4G USB Nano Receiver User Manual

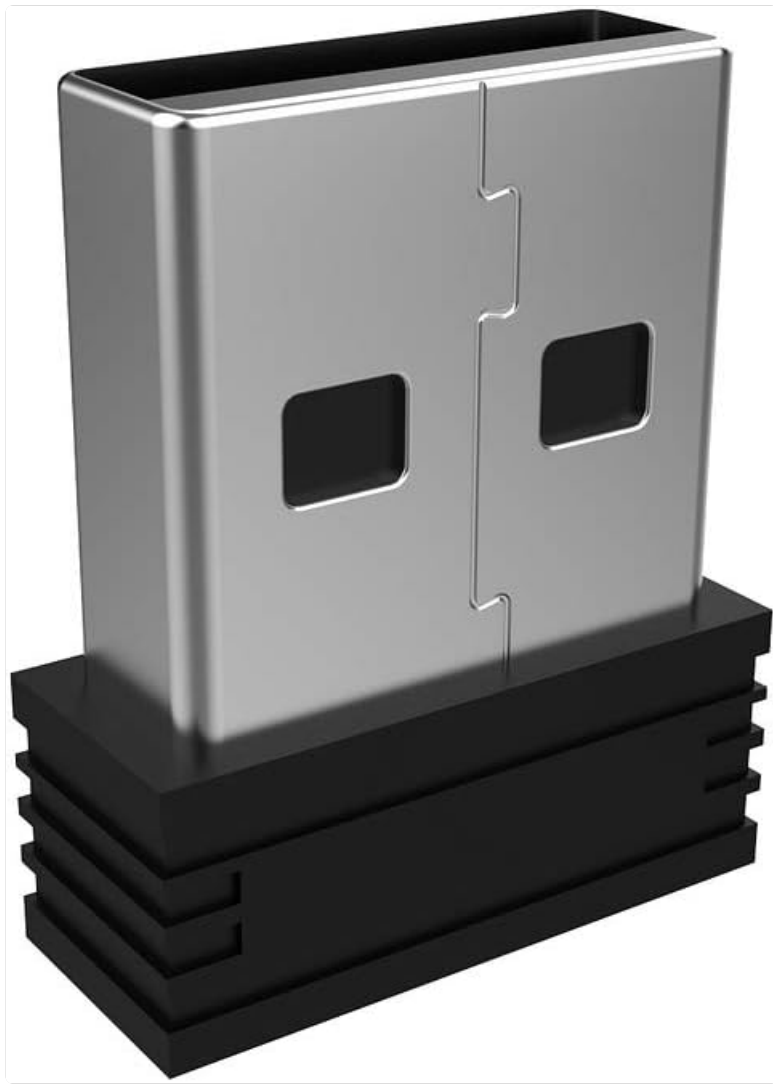
Model: AUSB1-UK

### INTRODUCTION

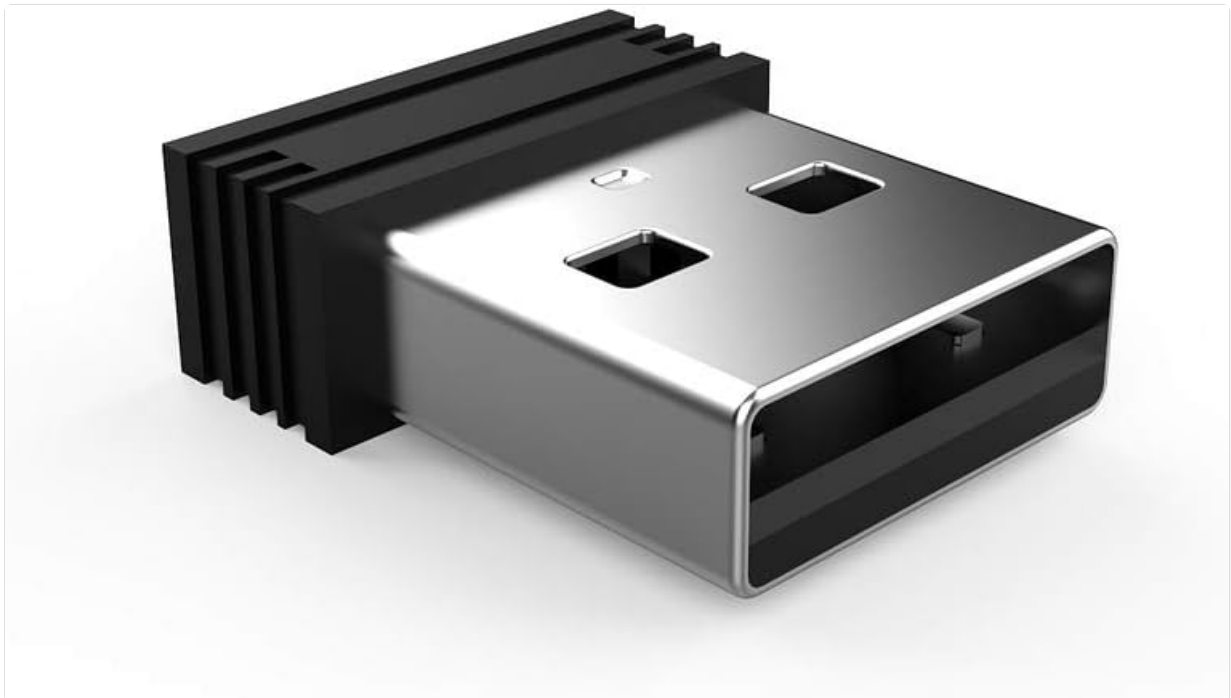
This manual provides essential information for the proper use and maintenance of your Arteck 2.4G USB Nano Receiver. This receiver is designed exclusively for Arteck 2.4G wireless keyboards and mice. It is not compatible with other brands or Arteck Bluetooth devices, including the Arteck HW197 keyboard.

Please read this manual thoroughly before use to ensure optimal performance and to avoid any potential issues.

### PRODUCT OVERVIEW



**Figure 1:** Angled view of the Artek 2.4G USB Nano Receiver. This compact device facilitates wireless communication between your Artek keyboard or mouse and your computer.



**Figure 2:** Front view of the Artek 2.4G USB Nano Receiver, showing the USB connector designed for standard USB-A ports on computers.

## SETUP AND INSTALLATION

The Arteck 2.4G USB Nano Receiver is designed for easy plug-and-play installation. In most cases, simply inserting the receiver into an available USB port on your computer will allow immediate use with a compatible Arteck wireless keyboard or mouse.

### Automatic Connection

1. Locate an available USB-A port on your computer.
2. Insert the Arteck 2.4G USB Nano Receiver firmly into the USB port.
3. Ensure your Arteck wireless keyboard or mouse is powered on.
4. The device should automatically connect within a few seconds.

### Manual Pairing Method

If the device does not connect automatically, or if you are using a replacement receiver, manual pairing may be required. Follow the steps below for your specific Arteck device:

## Pairing Method

The USB receiver cannot pair to the keyboard or mouse directly. You need to pair the USB receiver to the keyboard or the mouse manually.

For Arteck keyboard:

1. Unplug the USB receiver.
2. Switch the keyboard to be on and press the Esc+k, the indicator is blinking.
3. Move the keyboard close to the USB port and insert the USB receiver.

For Arteck mouse:

1. Unplug the USB receiver.
2. Switch the mouse to be off, press the wheel and the right button at the same time and hold.
3. Switch the mouse to be on and after that release the buttons. The mouse is in pairing mode and the indicator is blinking.
4. Move the mouse close to the USB port and insert the USB receiver.

If you still have problem with that, please send mail to the email address printed on the package and you will get prompt solution.

Note: The USB receiver is not suitable for other brands. This USB receiver is not working with Arteck HW197, HD197, MD167 or any bluetooth keyboards or mice.

**Figure 3:** Manual pairing instructions for Arteck 2.4G wireless keyboards and mice.

### For Arteck Keyboard:

1. Unplug the USB receiver from your computer.

2. Switch the keyboard to the ON position and press the **Esc + K** keys simultaneously. The indicator light on the keyboard should start blinking.
3. Move the keyboard close to a USB port and insert the USB receiver into the port. The keyboard should pair.

#### **For Artek Mouse:**

1. Unplug the USB receiver from your computer.
2. Switch the mouse to the OFF position.
3. Press the scroll wheel and the right mouse button simultaneously and hold them down.
4. While holding the buttons, switch the mouse to the ON position. Release the buttons once the indicator light on the mouse starts blinking, indicating it is in pairing mode.
5. Move the mouse close to a USB port and insert the USB receiver into the port. The mouse should pair.

## **OPERATING INSTRUCTIONS**

Once the Artek 2.4G USB Nano Receiver is successfully paired with your Artek wireless keyboard or mouse, it operates automatically. No further configuration is typically required.

- Ensure the receiver remains plugged into a USB port on your computer during use.
- Keep the wireless device (keyboard/mouse) within the effective operating range of the receiver (typically up to 10 meters or 33 feet, though this can vary based on environmental factors).
- Avoid placing the receiver near large metal objects or other devices that emit strong radio signals, as this may interfere with the wireless connection.

## **MAINTENANCE AND CARE**

The Artek 2.4G USB Nano Receiver requires minimal maintenance. Following these guidelines will help ensure its longevity:

- Keep the receiver clean and free from dust and debris. Use a soft, dry cloth for cleaning.
- Avoid exposing the receiver to extreme temperatures, humidity, or direct sunlight.
- Do not attempt to disassemble or repair the receiver yourself. This will void the warranty and may cause damage.
- Store the receiver in a safe place when not in use, especially if transporting your laptop, to prevent loss or damage.

## **TROUBLESHOOTING**

If you experience issues with your Artek 2.4G USB Nano Receiver, please refer to the following common solutions:

Problem	Possible Cause	Solution
Device not connecting automatically.	Receiver not paired, or driver issue.	Try the <b>Manual Pairing Method</b> described in the Setup section. Ensure your operating system drivers are up to date. Try a different USB port.
Intermittent connection or lag.	Interference, distance, or low battery in device.	Move the receiver closer to the device. Remove potential sources of interference (e.g., other wireless devices, large metal objects). Check and replace batteries in your Arteck keyboard/mouse if applicable.
Receiver not recognized by computer.	Faulty USB port or receiver.	Try plugging the receiver into a different USB port on your computer. Test the USB port with another device. If the issue persists, contact Arteck support.
Receiver is for Arteck products only.	Attempting to use with non-Arteck devices or specific Arteck models.	This receiver is <b>only</b> compatible with Arteck 2.4G wireless keyboards and mice. It is <b>not</b> compatible with Arteck HW197 or any Bluetooth versions.

If you continue to experience problems after attempting these solutions, please contact Arteck customer support for further assistance.

## SPECIFICATIONS

- **Brand:** Arteck
- **Model Number:** AUSB1-UK
- **Connectivity:** 2.4G Wireless Radio Frequency
- **Interface:** USB-A
- **Compatible Devices:** Arteck 2.4G Wireless Keyboards and Mice (excluding HW197 and Bluetooth models)

## WARRANTY AND SUPPORT

### Warranty Information

Arteck provides a **2-year warranty** for this product. This warranty covers manufacturing defects and issues arising from normal use. Please retain your proof of purchase for warranty claims.

The warranty does not cover damage caused by misuse, accidents, unauthorized modifications, or repairs.

### Customer Support

For any questions, technical assistance, or warranty claims, please contact Arteck customer support. You can reach us via:

- Amazon messaging system (if purchased via Amazon).
- The support email address provided in the product packaging.

Our support team is available to provide friendly and prompt assistance.

© 2024 Arteck. All rights reserved.