

## Manuals+

[Q & A](#) | [Deep Search](#) | [Upload](#)

manuals.plus /

› [SUBSONIC](#) /

› [SUBSONIC Superdrive SV250 Steering Wheel User Manual](#)

## SUBSONIC SV250 (SA5578)

# SUBSONIC Superdrive SV250 Steering Wheel User Manual

Model: SV250 (SA5578) | Brand: SUBSONIC

## INTRODUCTION

This user manual provides comprehensive instructions for the setup, operation, and maintenance of your SUBSONIC Superdrive SV250 Steering Wheel. Designed for multi-platform compatibility, this racing wheel enhances your gaming experience across various consoles and PC.

## KEY FEATURES

- **Multi-platform Compatibility:** Works with Nintendo Switch 2, Switch, PS4, Xbox Series X/S, Xbox One, PC, and PS3.
- **Wired Connection:** Ensures stable and responsive gameplay.
- **180° Rotation:** Provides a realistic steering experience.
- **Pedals and Paddles:** Includes two pedals (accelerator and brake) and gearshift paddles for enhanced control.
- **Sensitivity Adjustment:** Features 3 modes (low, medium, high) to adapt to different driving styles and game requirements.
- **Vibration Feedback:** Enhances immersion with tactile feedback during gameplay.
- **Programmable Functions:** Buttons and paddles can be programmed directly on the steering wheel or through game settings.
- **Secure Attachment:** Equipped with suction cups for stable mounting on flat surfaces.



Image: Overview of key features including programmable buttons, vibration, adjustable sensitivity, and 180-degree rotation.

## SETUP INSTRUCTIONS

Follow these steps to connect your Superdrive SV250 Steering Wheel to your gaming system:

1. **Ensure Console is Off:** Before connecting, make sure your gaming console (PS4, Xbox One, Nintendo Switch) is powered off.
2. **Connect Steering Wheel to Console:** Plug the USB cable from the steering wheel directly into an available USB port on your console.
3. **Connect Controller to Steering Wheel:** For PS4, Xbox One, and Nintendo Switch, connect your official console controller to the designated USB port on the steering wheel. This connection is crucial for authentication.
4. **Power On Console:** Turn on your gaming console.
5. **Activate Steering Wheel:** Once the console is on, press the "Home" button on your steering wheel to activate it. For Nintendo Switch, ensure the "Pro Controller Wired Communication" option is enabled in the console settings.

6. **Secure Mounting:** Place the steering wheel on a flat, stable surface. Utilize the integrated suction pads on the base of the steering wheel to firmly attach it to your table or desk.



*Image: The SUBSONIC Superdrive SV250 Steering Wheel and its accompanying pedal set.*

SET UP ON PS4 / XBOX ONE  
 EINRICHTEN AUF PS4 / XBOX ONE  
 INSTALLATION SUR PS4 / XBOX ONE  
 INSTALACION EN PS4 / XBOX ONE  
 INSTALLAZIONE SU PS4 / XBOX ONE

SV200 / SV450 / SV750 SET UP ON NINTENDO SWITCH  
 SV200 / SV450 / SV750 EINRICHTEN AUF NINTENDO SWITCH  
 SV200 / SV450 / SV750 INSTALLATION SUR NINTENDO SWITCH  
 SV200 / SV450 / SV750 INSTALACION EN NINTENDO SWITCH  
 SV200 / SV450 / SV750 INSTALLAZIONE SU NINTENDO SWITCH

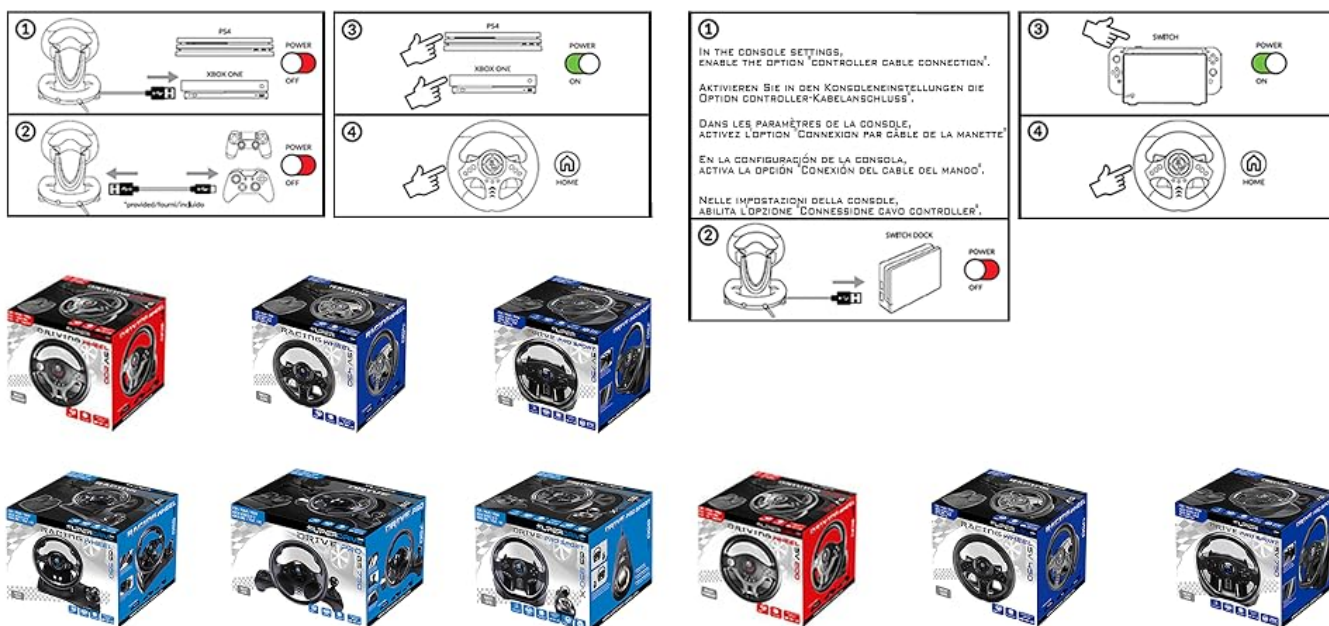


Image: Detailed setup diagrams illustrating connections for PS4, Xbox One, and Nintendo Switch consoles.

Video: Official guide on configuring the SV250 steering wheel for various platforms.

## OPERATING INSTRUCTIONS

### General Use

Once connected and activated, the steering wheel functions as your primary input device for racing games. The 180° rotation provides precise control, while the two pedals allow for acceleration and braking. The gearshift paddles, located behind the steering wheel, enable quick and easy gear changes.

### Adjusting Sensitivity

The SV250 features three sensitivity modes (low, medium, high) to match your preference and the demands of different games. Refer to your game's controller settings for specific adjustments or use the dedicated sensitivity buttons on the steering wheel if available.

### Programming Buttons and Paddles

The steering wheel offers programmable buttons and paddles, allowing you to customize your control layout. This function enables compatibility with a wide range of racing titles, including Gran Turismo Sport, Forza Motorsport, Project Cars, and Farming Simulator. Consult your game's controller configuration menu to assign functions to the programmable keys.

Video: Official guide demonstrating the configuration and programming of the SV250 steering wheel.

## MAINTENANCE

To ensure the longevity and optimal performance of your Superdrive SV250 Steering Wheel, follow these simple

maintenance guidelines:

- **Cleaning:** Use a soft, dry cloth to wipe down the steering wheel and pedals. Avoid abrasive cleaners or solvents that could damage the surface.
- **Storage:** When not in use, store the device in a cool, dry place away from direct sunlight and extreme temperatures.
- **Cable Care:** Avoid bending or crimping the cables excessively to prevent internal damage.

TROUBLESHOOTING

If you encounter issues with your Superdrive SV250 Steering Wheel, try the following solutions:

- **Device Not Responding:**
  - Ensure all cables are securely connected to the console and the official controller.
  - Verify that the console is powered on and the steering wheel's "Home" button has been pressed.
  - For Nintendo Switch, confirm "Pro Controller Wired Communication" is enabled in system settings.
- **Incorrect Button Mapping:**
  - Check the in-game controller settings to ensure buttons and paddles are correctly assigned.
  - Utilize the programming function on the steering wheel to reassign functions if needed.
- **Pedals Not Working:**
  - Ensure the pedal unit cable is firmly connected to the steering wheel base.
  - Test the pedals in a different game or on a different compatible system to isolate the issue.
- **Vibration Not Working:**
  - Check in-game settings for vibration feedback options and ensure they are enabled.
  - Some games may not support vibration feedback or may require specific settings.







SPECIFICATIONS

Model Number	SA5578
Product Dimensions	9.84 x 7.87 x 7.87 inches
Item Weight	3.39 pounds
Rotation Angle	180 degrees
Connectivity	Wired USB
Compatibility	Nintendo Switch 2, Switch, PS4, Xbox Series X/S, Xbox One, PC, PS3

WARRANTY AND SUPPORT

For warranty information or technical support, please contact SUBSONIC INC directly. Refer to the product packaging or the official SUBSONIC website for the most up-to-date contact details and warranty terms.

Related Documents - SV250 (SA5578)

	<p><a href="#">Handleiding Subsonic Superdrive SV200 Gaming Stuur   Installatie &amp; Gebruik</a></p> <p>Vind de complete handleiding voor het Subsonic Superdrive SV200 gaming stuur. Leer hoe u het stuur installeert, configureert en gebruikt op PC, PS4, Xbox One en Nintendo Switch.</p>
	<p><a href="#">DRIVE PRO SPORT GS 850-X Racing Wheel User Manual</a></p> <p>Comprehensive user manual for the DRIVE PRO SPORT GS 850-X racing wheel, covering features, installation, button configuration, programming, and troubleshooting for PS4, Xbox Series X/S, and Xbox One.</p>
	<p><a href="#">Subsonic GS 650-X Racing Wheel: Safety, Precautions, and Environmental Guidelines</a></p> <p>Comprehensive safety warnings, usage precautions, handling instructions, cleaning advice, storage tips, and environmental disposal guidelines for the Subsonic GS 650-X racing wheel (Model SA5658) by SUPERDRIVE.</p>
	<p><a href="#">DRIVE PRO SPORT GS 850-X: Guida all'uso e configurazione</a></p> <p>Manuale di istruzioni completo per il volante DRIVE PRO SPORT GS 850-X, che copre l'installazione, la configurazione dei pulsanti, la programmazione, la sensibilità e la risoluzione dei problemi per PS4, Xbox Series X/S e Xbox One.</p>
	<p><a href="#">Subsonic Astra Gaming Headset: User Manual and Setup Guide</a></p> <p>Detailed instructions and specifications for the Subsonic Astra Gaming Headset. Learn how to connect and use the headset with PS5, PS4, Xbox Series X/S, Xbox One, PC, Nintendo Switch, and mobile devices. Includes safety precautions and environmental information.</p>
	<p><a href="#">Subsonic Spectra LED Gaming Headset: User Manual &amp; Specifications</a></p> <p>Comprehensive user manual and specifications for the Subsonic Spectra LED Gaming Headset, covering setup, features, precautions, and compatibility with PS5, PS4, Xbox, PC, and Nintendo Switch.</p>



