

## Mayfair 1847SLOW 346

# Mayfair Cassel Elongated Slow Close Toilet Seat Instruction Manual

Model: 1847SLOW 346

## INTRODUCTION

This manual provides detailed instructions for the installation, operation, and maintenance of your Mayfair Cassel Elongated Slow Close Toilet Seat. Designed for durability and ease of use, this enameled wood toilet seat features Whisper Close technology for quiet operation, Easy Clean hinges for simplified maintenance, and the STA-TITE Seat Fastening System for a secure fit. Please read this manual thoroughly before installation and use.

## PRODUCT FEATURES

- **Whisper Close Technology:** The seat and lid close slowly and quietly, preventing slamming and pinched fingers.
- **Easy Clean Hinges:** Hinges quickly release, allowing for thorough cleaning and easy replacement.
- **STA-TITE Seat Fastening System:** Ensures the seat remains firmly attached to the toilet bowl without shifting or loosening.
- **Adjustable Fit:** The seat can be adjusted front to back by up to 1/2 inch for a perfect, flush fit with your toilet bowl.
- **Durable Enameled Wood:** Constructed from high-quality wood to withstand daily use without cracking, warping, chipping, or staining.
- **Made in USA:** Proudly manufactured in Sheboygan Falls, Wisconsin, USA.



Slow Close



Never Loosens.  
Guaranteed.™



Adjustable Fit



Removes for  
Easy Cleaning



## WOOD TOILET SEAT

Figure 1: Key features of the Mayfair Cassel Toilet Seat.

Video 1: Overview of Mayfair Cassel Toilet Seat Features.

### PACKAGE CONTENTS

Your Mayfair Cassel Toilet Seat package includes:

- (1) Mayfair Cassel Elongated Slow Close Toilet Seat
- Hardware for installation

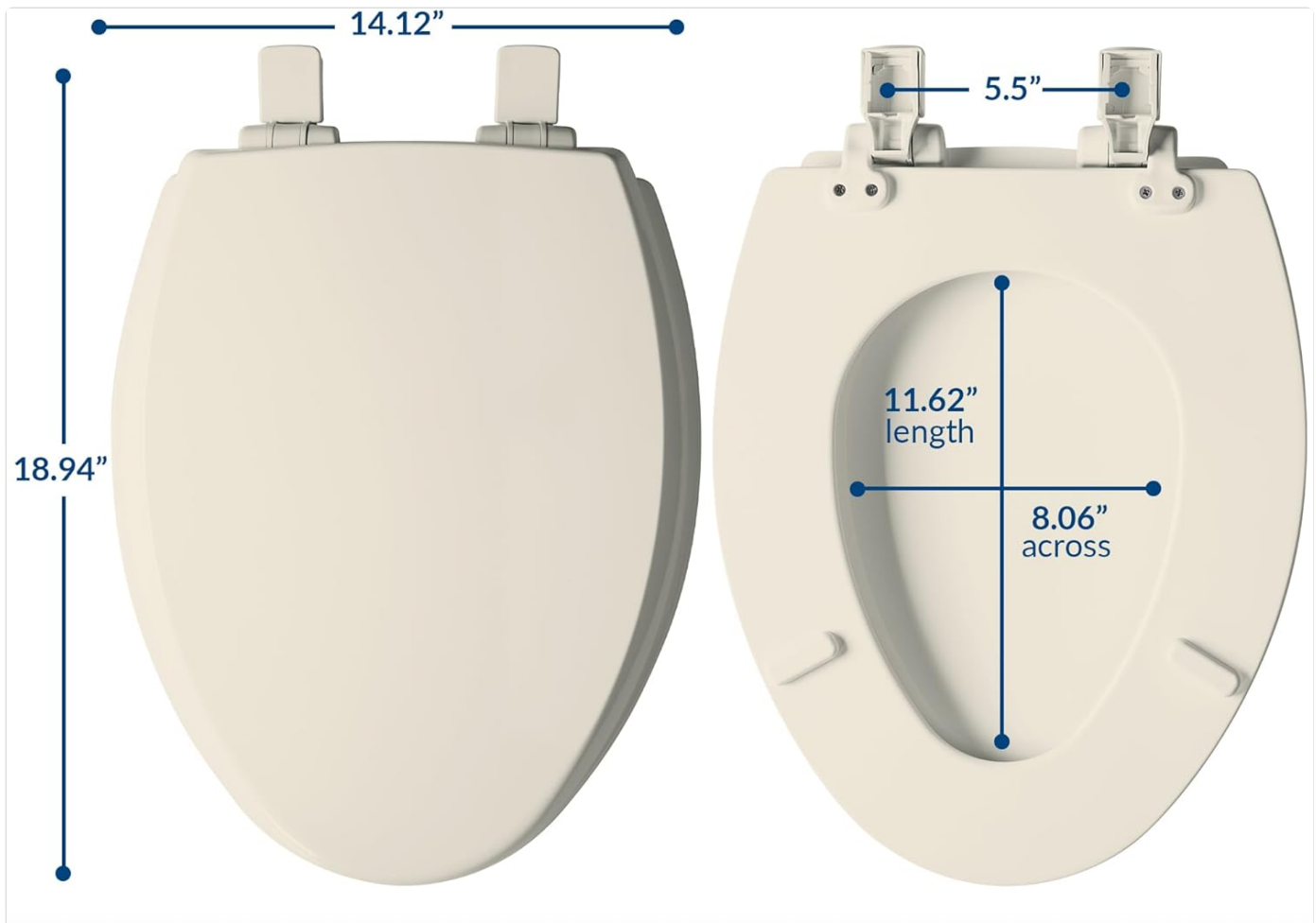
### MEASURING FOR PROPER FIT

To ensure you have the correct size toilet seat, measure your toilet bowl. Toilets typically come in two standard sizes: Round and Elongated.

1. Measure the distance from the center of the bolt holes at the back of the toilet bowl to the very front edge of the

bowl.

2. A measurement of approximately 16.5 inches (41.9 cm) indicates a **Round** toilet bowl.
3. A measurement of approximately 18.5 inches (47 cm) indicates an **Elongated** toilet bowl.



# Elongated Product Dimensions

Figure 2: Elongated toilet seat dimensions and measurement points.

Video 2: Guide on how to measure for Round or Elongated toilet seats.

## INSTALLATION INSTRUCTIONS

Follow these steps for a secure and proper installation of your Mayfair Cassel toilet seat. A 5/8" (16mm) wrench or ratchet is recommended for tightening.

1. Insert the bolts (A) through the hinge caps (C) and into the toilet bowl holes.
2. Open the hinge caps.
3. Slide the seat onto the bolts.
4. Close the hinge caps.
5. Lightly finger-tighten the nuts (B) from underneath the toilet bowl.

6. Adjust the seat for a perfect fit, ensuring it is centered on the bowl.
7. While holding the seat centered, tighten the nuts from underneath the toilet bowl using a 5/8" (16mm) wrench until the bottom nut snaps off. This indicates optimal tightness for the STA-TITE system. Discard the snapped-off nut.

# Easy Installation



Watch the installation video on this page for more detail

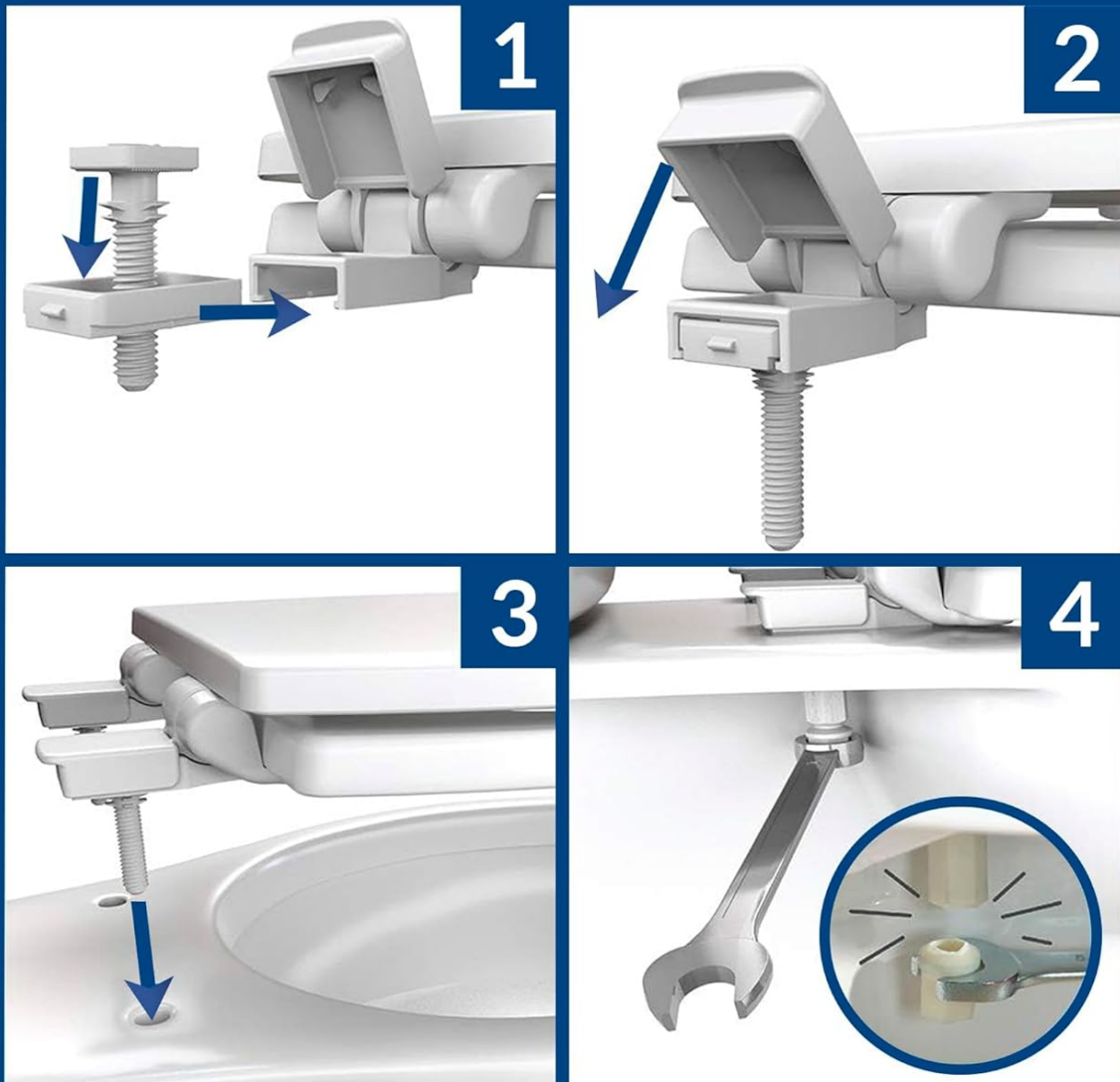


Figure 3: Easy installation steps for the toilet seat.

Video 3: Detailed installation guide for Mayfair Toilet Seats.

Video 4: Demonstrating the STA-TITE Seat Fastening System for a secure fit.

## OPERATION (SLOW CLOSE FEATURE)

The Mayfair Cassel toilet seat is equipped with Whisper Close technology, allowing the seat and lid to close gently and quietly. This feature helps prevent loud slamming and protects fingers from being pinched.

- To activate the slow close feature, simply push the seat or lid down slightly. It will then lower itself slowly and silently.

- Ensure the seat is properly installed on the toilet bowl for the slow close mechanism to function correctly.

Video 5: Demonstrating the Whisper Close feature for quiet closing.

## MAINTENANCE AND CLEANING

Regular cleaning will help maintain the glossy finish and extend the life of your toilet seat. The Easy Clean hinges allow for quick removal of the seat for thorough cleaning.

1. To remove the seat for cleaning, simply lift the hinge caps and slide the seat forward off the bolts.
2. Clean the seat and hinges with mild soap and water, or anti-bacterial wipes.
3. **DO NOT** use bleach, harsh chemicals, or abrasive cleaners, as these can damage the finish.
4. After cleaning, slide the seat back onto the bolts and close the hinge caps until they click into place.





### SLOW CLOSE FEATURE

Seat must be installed on toilet bowl  
**BEFORE**  
the Slow Close mechanism will function.



### CLEANING YOUR TOILET SEAT

To preserve your seat's glossy finish,  
we recommend cleaning with either:

- Anti-bacterial wipes
- Dish soap
- Anti-bacterial hand soap

**Do Not Use  
Bleach or Harsh Chemicals**

Figure 4: Cleaning recommendations for your toilet seat.

## TROUBLESHOOTING

Problem	Possible Cause	Solution
Seat loosens or shifts	Nuts not tightened sufficiently during installation.	Re-tighten the nuts using a 5/8" (16mm) wrench until the bottom nut snaps off, indicating proper torque.
Slow close feature not working	Improper installation or obstruction.	Ensure the seat is correctly installed and there are no obstructions preventing smooth closure. Verify hinges are clean.
Seat is difficult to remove for cleaning	Hinge caps not fully lifted or debris in hinges.	Ensure hinge caps are fully open. Clean any debris from the hinge mechanism.

## SPECIFICATIONS

Attribute	Detail
Brand	Mayfair
Model Number	1847SLOW 346
Color	Biscuit
Material	Wood
Style	Seat
Shape	Oval (Elongated)
Product Dimensions	18.94"L x 14.12"W
Item Weight	6.76 Pounds
UPC	073088160300
Manufacturer	Bemis

# Looking for the Perfect Color Match?

This color is compatible with the toilets listed below



Toilet Manufacturer	Color Name
American Standard	Linen
Briggs	Biscuit
Eljer	Biscuit / Linen
Gerber	Bristish Biscuit
Gerberit	Biscuit
Kohler	Biscuit
Mansfield	Antique Lace
Toto	Sedona Beige

Figure 5: Color compatibility chart for Biscuit toilet seats.

## WARRANTY AND SUPPORT

This Mayfair toilet seat is covered by a manufacturer's warranty for 1 year for purchases made by customers in the US and Canada. For warranty claims or additional support, please contact Bemis, the manufacturer.