

LG HBS-FN5W

LG Tone Free FN5W True Wireless Earbuds User Manual

Model: HBS-FN5W | Brand: LG

INTRODUCTION

The LG TONE Free FN5W Premium Wireless Earbuds are designed for a comfortable audio experience. These earbuds feature Meridian Sound technology, noise reduction, and dual microphones for clear communication. They offer wireless charging capabilities and are rated IPX4 for water resistance, making them suitable for various activities. This manual provides essential information for setting up, operating, and maintaining your earbuds.



Image: The LG Tone Free FN5W earbuds in their charging case.

WHAT'S IN THE BOX

Upon unboxing your LG Tone Free FN5W earbuds, you should find the following components:

- LG Tone Free FN5W Earbuds (Left and Right)
- Charging Case

- Extra Eargels (Small/Large sizes)
- Type-C Cable
- Charging Adaptor
- User Manual (this document)
- Warranty Card

SETUP

1. App Installation

For enhanced control and access to all features, it is recommended to download the **LG TONE Free** application from your smartphone's app store. This app is available for both Android and iOS devices.

2. Bluetooth Pairing

To connect your LG Tone Free FN5W earbuds to your smartphone or other Bluetooth-enabled device, follow these steps:

1. Ensure Bluetooth is activated on your smartphone. This can typically be found in your phone's settings menu under "Connected devices" or "Bluetooth."
2. Open the charging case lid of your LG Tone Free earbuds.
3. Press and hold the Bluetooth pairing button located on the side of the charging case for approximately 3 to 5 seconds. The indicator light on the front of the case will blink blue, indicating it is in pairing mode.
4. **For Android 5.0 or higher:** A fast pair connection pop-up may appear on your mobile phone screen. Tap "Connect" and then "Set up" to pair your earbuds.
5. **Manual Pairing (if pop-up does not appear or for iOS devices):** Navigate to your phone's Bluetooth settings menu. Look for "LG HBS-FN5W" (or a similar model name) in the list of available devices and select it to complete the pairing process.

Your browser does not support the video tag.

Video: Official LG Electronics demonstration on how to pair LG TONE Free Earbuds to a smartphone.

OPERATING

1. Touch Controls

The LG Tone Free FN5W earbuds feature intuitive touch controls for managing audio playback and calls:

- **Touch Once:** Answer/End call, Play/Pause music.
- **Touch Twice:** End call, Volume Control (specific function may vary by model/app settings).
- **Touch Three Times:** Play next song.
- **Long Press:** Ambient Sound/Noise Canceling (specific function may vary by model/app settings).
- **Swipe Up/Down:** Control volume (available on some models, check app settings).

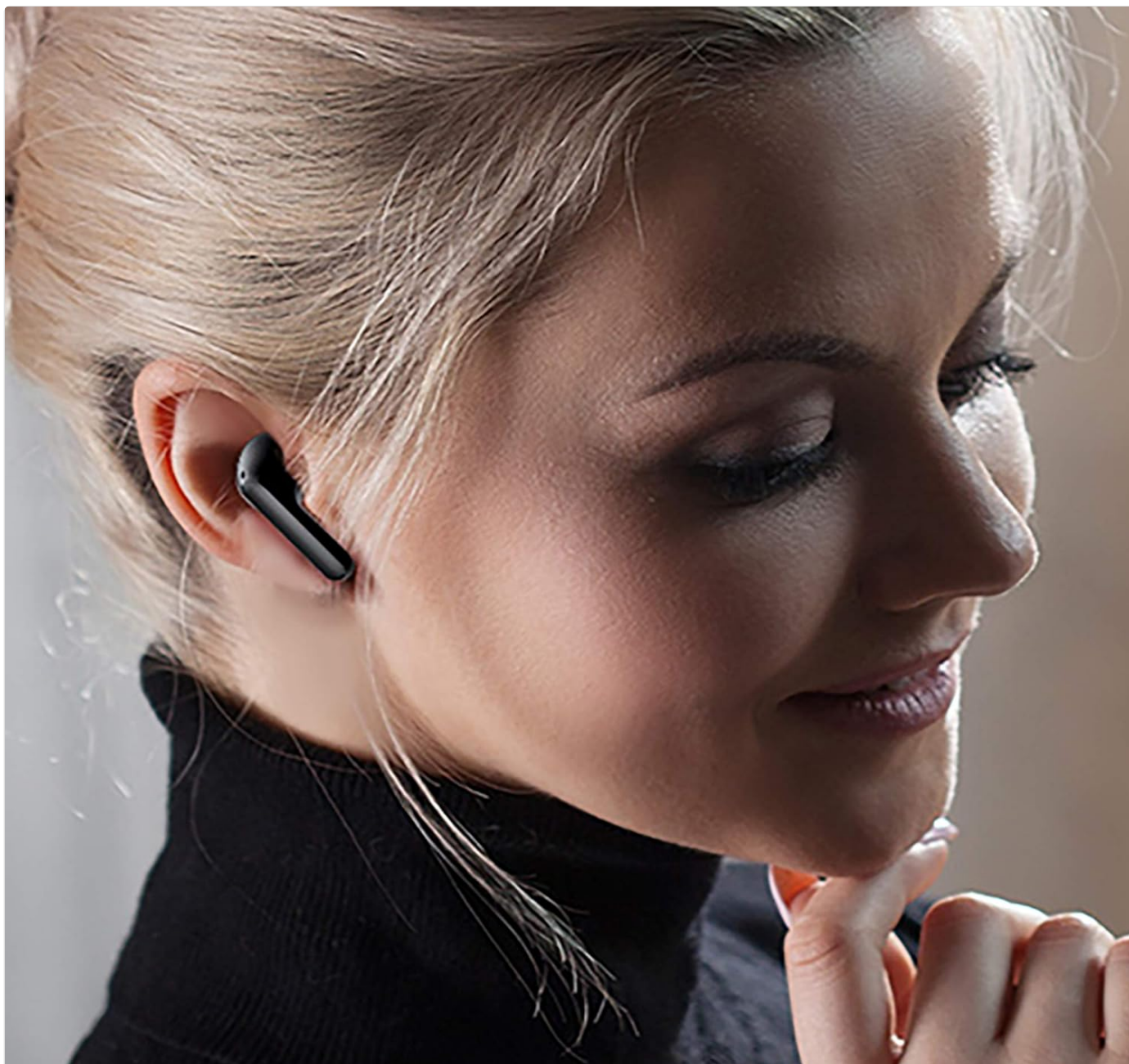


Image: A user wearing the LG Tone Free FN5W earbuds, demonstrating their ergonomic fit.

2. Sound Modes and Equalizer Settings

Utilize the LG TONE Free app to customize your listening experience:

- **Equalizer Settings:** Choose from presets like Immersive, Bass Boost, Natural, or Treble Boost, or create custom settings.
- **Ambient Sound:** Adjust the level of ambient sound you hear to stay aware of your surroundings.
- **Noise Reduction & Echo Cancellation:** The dual microphones are designed to detect and minimize unwanted noise, enhancing call clarity.

3. Wireless Charging

The charging case supports wireless charging. Simply place the case with the earbuds inside on a compatible wireless charging pad to recharge. Wireless charging pads are not included with the purchase.

MAINTENANCE

Proper maintenance ensures the longevity and optimal performance of your earbuds:

- **Cleaning:** Regularly clean the earbuds and charging contacts to prevent debris buildup, which can affect charging and

sound quality. Use a soft, dry cloth.

- **Ear Gels:** The included ear gels are made from medical-grade, non-toxic, hypoallergenic silicone. Clean them gently with a damp cloth if necessary.
- **Water Resistance:** The earbuds are IPX4 water-resistant, meaning they can resist splashing water from any direction. However, they are not waterproof. Ensure the earbuds are completely dry before placing them back in the charging case or charging them. The charging case is not water-resistant.

TROUBLESHOOTING

If you encounter issues with your LG Tone Free FN5W earbuds, consider the following common solutions:

- **Charging Issues:** If an earbud is not charging, ensure the charging contacts on both the earbud and inside the case are clean and free of debris. Gently wipe them with a dry cotton swab or soft cloth.
- **Connectivity Problems:** If earbuds fail to connect or maintain a stable connection, try re-pairing them by following the Bluetooth Pairing steps in the Setup section. Ensure no other devices are interfering with the Bluetooth signal.
- **Sound Quality:** Check the equalizer settings in the LG TONE Free app. Ensure the ear gels are properly fitted to achieve optimal sound isolation and quality.
- **App Functionality:** If the app is not responding, try restarting the app or your smartphone. Ensure the app is updated to the latest version.

SPECIFICATIONS

Brand	LG
Model Number	HBS-FN5W
Connectivity Technology	Bluetooth 5.0
Ear Placement	In Ear
Noise Control Features	Noise Reduction & Echo Cancellation, Sound Isolation
Battery Life (Earbuds)	Up to 6 hours (standard playtime)
Battery Life (with Case)	Up to 18 hours total (6 hours earbuds + 12 hours case)
Water Resistance Level	IPX4 (Earbuds only)
Material	Silicone (Eargels)
Product Dimensions	1.29 x 0.63 x 0.98 inches
Item Weight	1.58 ounces
Compatible Devices	Cellphones, Laptops, Desktops, and Other Bluetooth-enabled Devices

WARRANTY AND SUPPORT

Your LG Tone Free FN5W earbuds come with a Warranty Card included in the packaging. For detailed information regarding warranty coverage, terms, and conditions, please refer to the provided Warranty Card or visit the official LG Electronics support website. For technical assistance or further inquiries, please contact LG customer support.

