



Manuals.plus /

› **NEU MASTER** /

› NEU MASTER 3-in-1 Heavy Duty Manual Staple Gun Instruction Manual NHT0050

NEU MASTER NHT0050

NEU MASTER 3-in-1 Heavy Duty Manual Staple Gun Instruction Manual

Model: NHT0050

1. PRODUCT OVERVIEW

The NEU MASTER 3-in-1 Heavy Duty Manual Staple Gun is a versatile tool designed for various fastening tasks, including upholstery, material repair, carpentry, decoration, and furniture projects. Its robust all-steel construction ensures durability, while ergonomic features enhance user comfort and safety.



Image 1.1: NEU MASTER 3-in-1 Heavy Duty Manual Staple Gun, showing the tool, various staple types, and a staple remover.

Key Features:

- **All-Steel Construction:** Ensures durability and rust resistance.
- **Rubberized Non-Slip Grip:** Minimizes hand fatigue and provides a secure hold.
- **3-in-1 Versatility:** Compatible with D-type, U-type staples, and T-type brad nails.
- **Quick-Jam Clear Mechanism:** Facilitates easy removal of jammed staples.
- **Quick-Review Window:** Allows monitoring of staple supply.
- **Adjustable Pressure Setting:** Adapts to different material thicknesses.
- **Handle Lock Mechanism:** For safe storage.



Image 1.2: Labeled components of the NEU MASTER 3-in-1 Staple Gun, highlighting features like the non-slip handle, pressure setting knob, and quick-review window.

2. SAFETY INSTRUCTIONS

Always prioritize safety when operating any tool. Read and understand all instructions before use. Failure to follow these instructions may result in injury or damage to the tool.

- **Eye Protection:** Always wear safety glasses or goggles to protect your eyes from flying debris.
- **Hand Protection:** Wear appropriate gloves to protect your hands.
- **Work Area:** Ensure your work area is clean, well-lit, and free from obstructions.
- **Secure Workpiece:** Always secure the material you are stapling to prevent movement.
- **Keep Clear:** Keep hands and body parts away from the staple exit area.
- **Unload When Not in Use:** Always unload staples and engage the handle lock when the tool is not in use or before performing maintenance.
- **Proper Staples:** Use only the correct type and size of staples/nails for this tool.
- **Children and Bystanders:** Keep children and bystanders away from the work area.
- **Inspect Tool:** Before each use, inspect the tool for any damage or loose parts. Do not use a damaged tool.

3. SETUP AND LOADING STAPLES

Proper loading of staples is crucial for efficient and safe operation.

1. **Release Magazine:** Locate the magazine release latch at the bottom rear of the staple gun. Press the slider and move it to the bottom to open the magazine.
2. **Pull Out Slider:** Pull out the staple slider mechanism completely from the rear of the gun.
3. **Insert Staples/Nails:** Place the desired type of staples (D-type, U-type) or brad nails (T-type) into the magazine channel. Ensure the staples are facing the correct direction, with the crown (flat top) upwards.
4. **Close Magazine:** Push the slider back into the magazine until it locks securely in place.

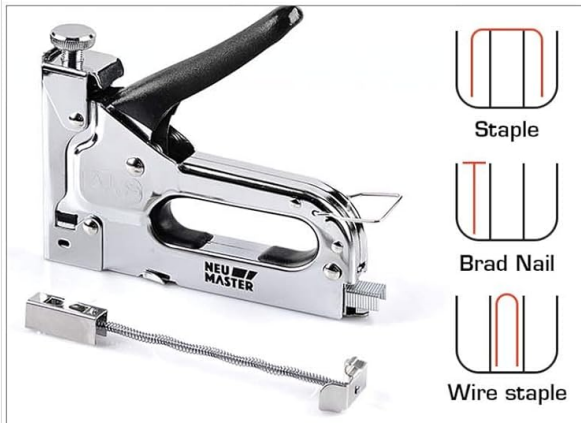
How to Load Various Staples



Press the slider and move it to bottom.



Pull out the slider.



Insert the staple & nail strip into the magazine.



Insert the slider and push it until it lock.

Image 3.1: Step-by-step guide for loading staples into the staple gun's magazine.

Compatible Fasteners:

- **D-type Staples:** Similar to Arrow T50.
- **U-type Staples:** Similar to Arrow T18.
- **T-type Brad Nails:** 18 Gauge.

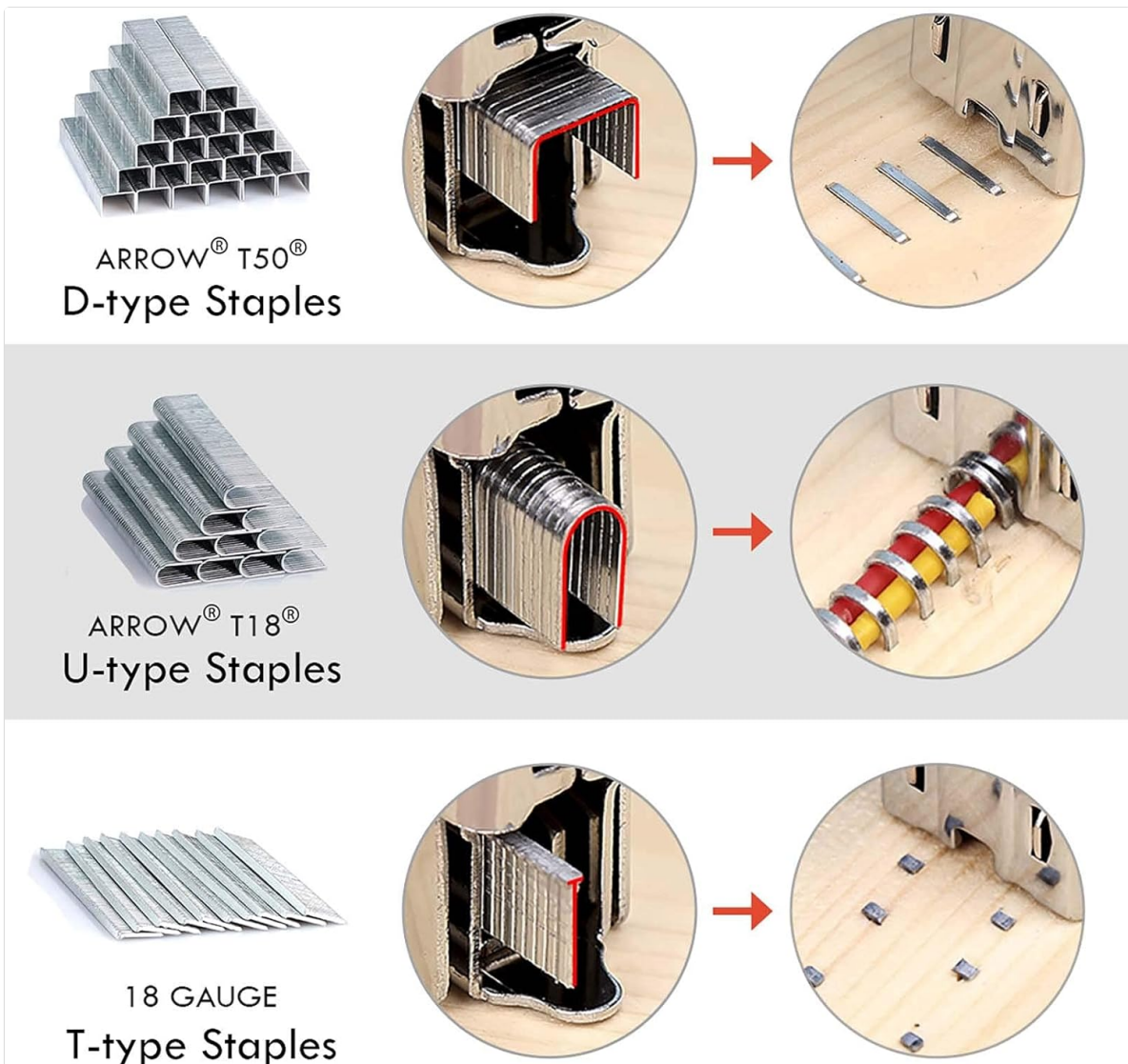


Image 3.2: Examples of compatible D-type, U-type staples, and T-type brad nails.

4. OPERATING INSTRUCTIONS

Adjusting Pressure:

The staple gun features an adjustable pressure setting to accommodate different material densities. To adjust the driving force:

- Turn the screw knob located on the top of the staple gun clockwise to increase the driving force for harder materials.
- Turn the screw knob counter-clockwise to decrease the driving force for softer materials.

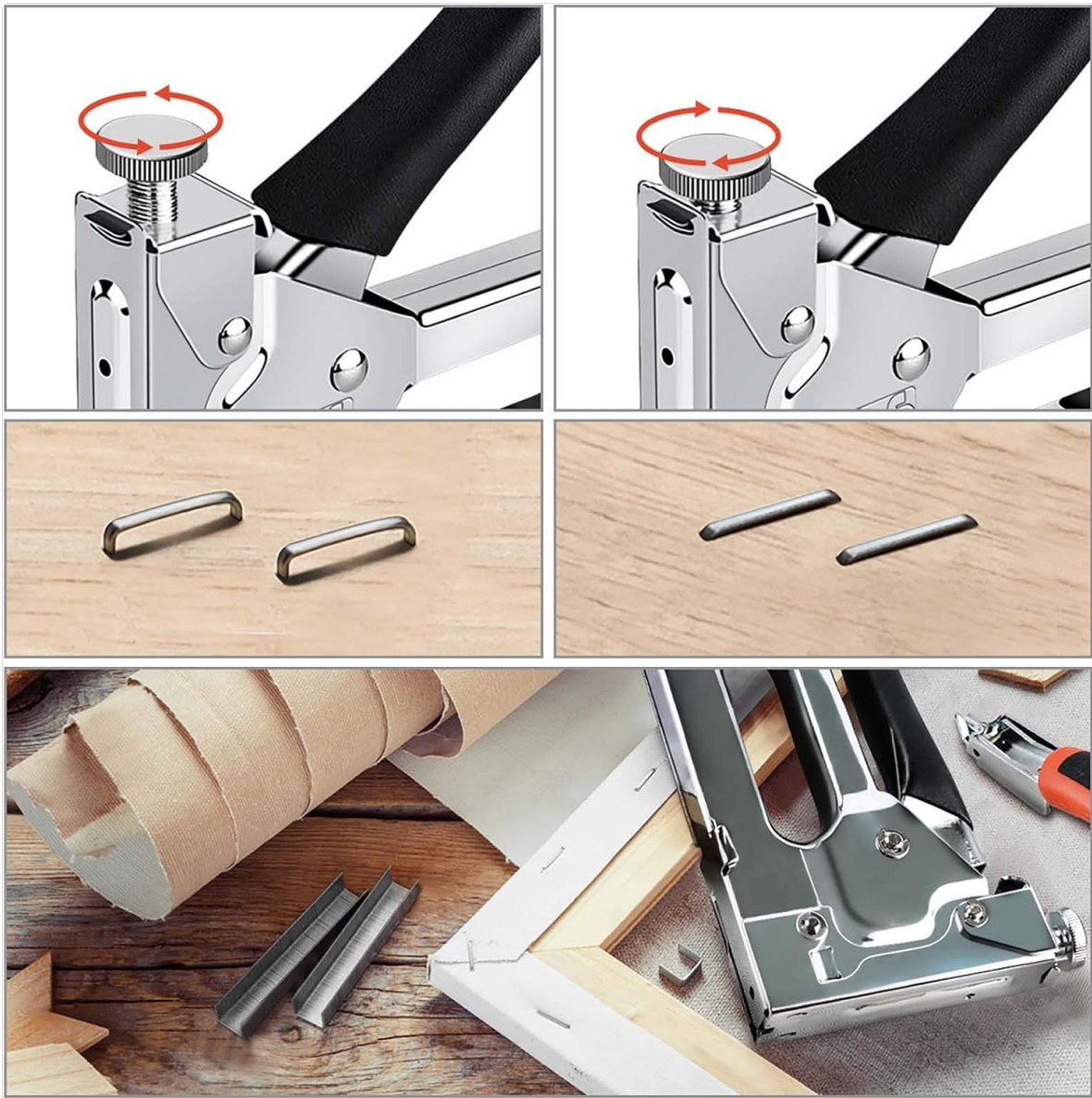


Image 4.1: Adjusting the pressure setting for optimal staple penetration.

General Usage:

1. Select the appropriate staple or nail type and load it into the magazine as described in Section 3.
2. Adjust the pressure setting according to the material you are working with.
3. Position the staple gun firmly against the workpiece where the fastener is to be driven.
4. Squeeze the handle firmly and completely to drive the staple or nail.
5. After use, ensure all staples are removed from the magazine and engage the handle lock for safe storage.

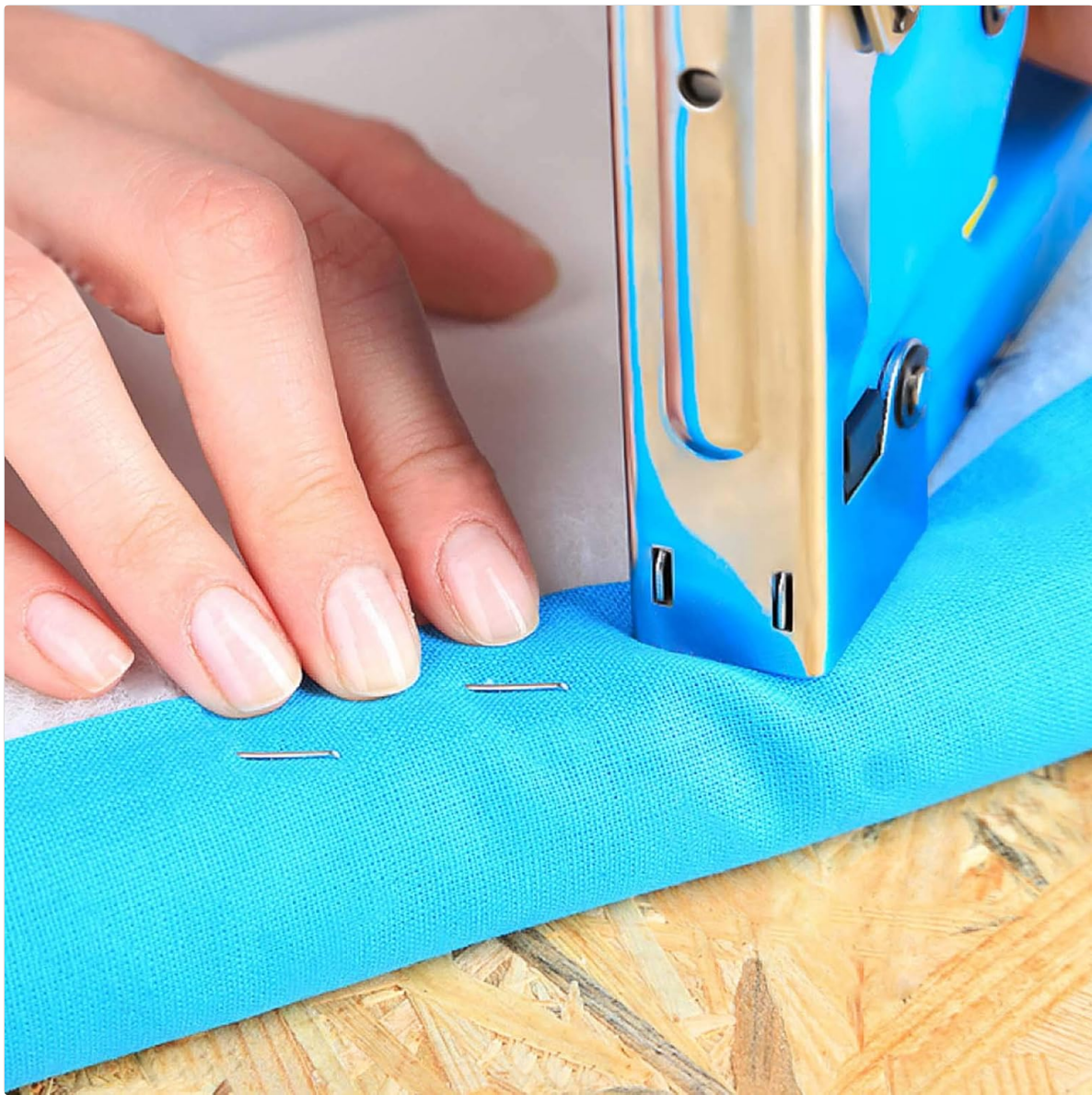


Image 4.2: Demonstrating the staple gun in use for upholstery work.

Applications:

This staple gun is suitable for a wide range of applications, including:

- Upholstery projects
- Fixing materials
- Decoration tasks
- Carpentry work
- Furniture assembly and repair
- DIY home improvement
- Securing wires



Image 4.3: Visual examples of common applications for the NEU MASTER staple gun.

5. MAINTENANCE

Regular maintenance ensures the longevity and optimal performance of your staple gun.

- **Cleaning:** Keep the tool clean and free from dust and debris. Use a dry cloth to wipe down the exterior.
- **Lubrication:** Periodically apply a small amount of light machine oil to moving parts, such as the trigger mechanism and magazine slider, to ensure smooth operation.
- **Storage:** Store the staple gun in a dry, secure place, out of reach of children. Always unload staples and engage the handle lock before storage.
- **Inspection:** Regularly check for any signs of wear, damage, or loose fasteners. Address any issues promptly.

6. TROUBLESHOOTING

If you encounter issues during operation, refer to the following common problems and solutions:

| Problem | Possible Cause | Solution |
|--|---|---|
| Staples not firing or jamming frequently | Incorrect staple loading, wrong staple type, low staple supply, debris in magazine, or insufficient pressure. | <p>Ensure staples are loaded correctly and are the compatible type.</p> <p>Check the quick-review window for staple supply.</p> <p>Clear any debris from the magazine using the quick-jam clear mechanism.</p> <p>Increase the pressure setting for harder materials.</p> |
| Staples not fully penetrating material | Insufficient pressure setting, material too hard, or worn driver blade. | <p>Increase the pressure setting.</p> <p>Ensure the material is suitable for manual stapling.</p> <p>Contact customer support if the driver blade appears worn.</p> |
| Staples bending or clinching improperly | Incorrect staple length for material thickness, or improper tool angle. | <p>Use staples of appropriate length for the material.</p> <p>Ensure the tool is held perpendicular to the workpiece.</p> |

The NEU MASTER staple gun is equipped with a **quick-jam clear mechanism**. If a jam occurs, carefully open the magazine, remove the jammed fastener, and ensure the channel is clear before reloading.

7. SPECIFICATIONS

| | |
|-----------------------------|--|
| Brand | NEU MASTER |
| Model Number | NHT0050 |
| Item Weight | 2 pounds |
| Product Dimensions | 6 x 1 x 5.5 inches (L x W x H) |
| Material Type | All-steel construction with rubberized grip |
| Compatible Fasteners | D-type staples (e.g., Arrow T50), U-type staples (e.g., Arrow T18), 18 Gauge T-type brad nails |
| Included Fasteners | 2000 pieces (various types) |

8. WARRANTY AND SUPPORT

NEU MASTER provides new replacements instead of repairing services for its tools. Your NEU MASTER 3-in-1 Heavy Duty Manual Staple Gun comes with a **2-year after-sales service**.

If you have any questions, require assistance, or encounter any issues with your product, please contact NEU MASTER customer support. Refer to the product packaging or the official NEU MASTER website for the most current contact information.

NEU MASTER is committed to offering quality and affordable DIY tools, ensuring customer satisfaction.