



[Manuals.plus](#) /

› [Prolink](#) /

› Prolink DS-3202M Smart Plug 13A User Manual

Prolink DS-3202M

Prolink DS-3202M Smart Plug 13A User Manual

Model: DS-3202M

INTRODUCTION

The PROLiNK DS-3202M Wi-Fi Smart Plug allows users to control home appliances remotely using the mEzee application on a smartphone. This device enables remote switching of appliances on or off and management of power schedules while on-the-go. It features energy monitoring capabilities to track power usage and estimate costs.

Key features include quick setup, scheduling and timer functions, a space-saving design, remote control, easy device sharing, voice control, child lock, and various smart scheduling options like Circulate, Random, and Inching schedules.

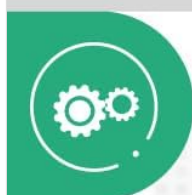
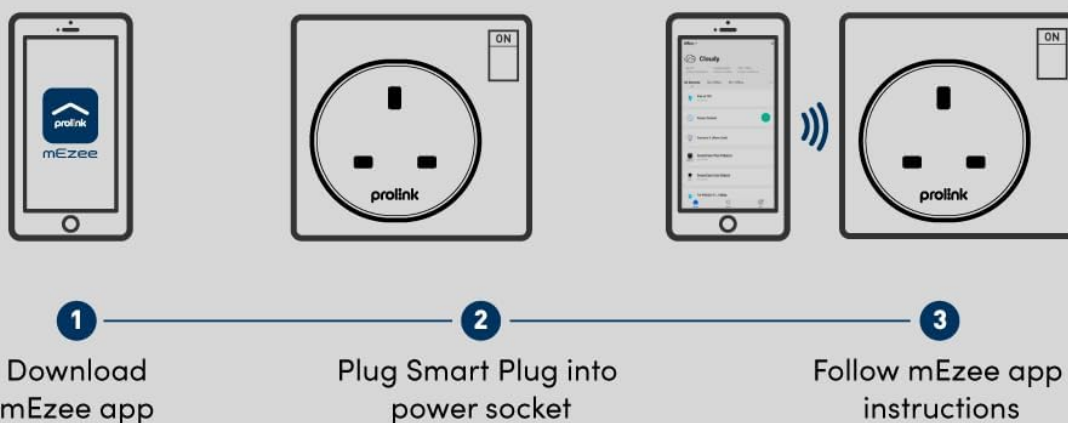


Image: Front view of the Prolink DS-3202M Smart Plug, showing its compact design and standard UK Type G plug face.

SETUP INSTRUCTIONS

1. **Download the mEzee App:** Search for and download the 'mEzee' application from your smartphone's app store (available for iOS and Android).
2. **Plug in the Smart Plug:** Insert the Prolink DS-3202M Smart Plug into a standard 13A wall socket. Ensure the socket is powered on.
3. **Pair with mEzee App:** Open the mEzee app and follow the on-screen instructions to add a new device. The app uses auto-discovery to easily pair with your smart plug. No separate hub is required for this process.
4. **Connect to Wi-Fi:** During the pairing process, you will be prompted to connect the smart plug to your existing home 2.4GHz Wi-Fi network. Enter your Wi-Fi credentials when requested.

Download mEzee app and connect to your existing home Wi-Fi.
Auto-discovery allows you to pair your smart plug easily.
No hub is required.



EASY PAIRING AND SETUP

Image: Visual guide illustrating the three steps for easy pairing and setup: download mEzee app, plug in Smart Plug, and follow app instructions.

OPERATING INSTRUCTIONS

Remote Control

Once paired, you can control any device connected to the smart plug remotely via the mEzee app on your smartphone. This allows you to switch appliances on or off from anywhere with an internet connection.

Scheduling and Timers

The mEzee app allows you to set schedules and timers for your connected appliances. This includes:

- **Standard Schedule:** Set specific times for the plug to turn on or off on selected days of the week.
- **Smart Circulate Schedule:** Configure a cycle timing, enabling the device to turn on and off repeatedly within a specified time period.
- **Smart Random Schedule:** Enhance home security by automatically turning smart devices on and off at random intervals within a set timeframe and selected days. This creates the illusion that someone is home when you are away.
- **Smart Inching Schedule:** Automatically turns off a device after it has been on for a specified duration,

regardless of how it was activated. For example, a light bulb can be set to turn off after one minute if motion is detected.



Manage your appliances to switch on and off automatically based on your preferred time, wherever you are.



Schedule

Turn on the fan from 6pm-9pm every Mon



Inching

Turn off the electric slow cooker after 60mins



Random

Turn on the light anytime between 6pm-11pm



SMART SCHEDULING

Image: Illustration of smart scheduling options including setting a fan schedule, an inching timer for a slow cooker, and a random timer for a lamp.

Energy Monitoring

The smart plug provides energy monitoring features, allowing you to track power usage (kWh) on an hourly, daily, or monthly basis through the mEzee app. This data can help you understand and manage your electricity consumption, potentially leading to cost savings.

Keep track of your power usage (kWh) on a hourly/daily/monthly basis.
By setting the smart schedule, you can save money on electric bills.



POWER CONSUMPTION MONITORING

Image: A smartphone screen displaying the mEzee app's energy monitoring interface, showing monthly usage statistics and a graph of power consumption.

Voice Control

The Prolink DS-3202M Smart Plug supports voice control through popular smart assistants such as Amazon Alexa, Google Assistant, and Siri Shortcuts. Link your mEzee account to these services to control your connected appliances using voice commands.

- Example commands: "Hey Google, turn on the Lamp", "Alexa, turn off the Coffee Maker".

The compact size prevents adjacent sockets from being blocked.



Obstructed
plug space



SIMPLE AND COMPACT DESIGN


Image: An illustration demonstrating how to use voice commands with Google Assistant, Siri Shortcuts, and Alexa to control devices connected to the smart plug.


Child Lock


The smart plug includes a child lock feature to prevent accidental activation or deactivation by children. This function can be enabled via the mEzee app to disable the physical power button on the plug.

Use voice commands to control your supported appliances with Alexa, Google Assistant, Siri Shortcut.



 Hey Google, turn on the "Lamp"

 Hey Google, turn on the "Coffee Maker"

 Hey Google, turn on the "Cooker"



VOICE CONTROL

Image: A child attempting to press the physical button on a smart plug, with an overlay indicating the child lock feature prevents accidental operation.

MAINTENANCE

The ProLink DS-3202M Smart Plug requires minimal maintenance. To ensure optimal performance and longevity:

- Keep the device clean by wiping it with a dry, soft cloth.
- Avoid using harsh chemicals or abrasive cleaners.
- Ensure the plug and socket connections are secure and free from dust or debris.
- Do not expose the device to excessive moisture or extreme temperatures.

TROUBLESHOOTING

Connectivity Issues

- **Plug not connecting to Wi-Fi:** Ensure your Wi-Fi network is 2.4GHz. The smart plug does not support 5GHz networks. Check that your Wi-Fi signal strength is adequate where the plug is located.
- **App cannot find the plug:** Make sure the plug is powered on and in pairing mode (refer to app

instructions for specific indicator light behavior). Restart the mEzee app or your smartphone.

- **Remote control not working:** Verify your smartphone has an active internet connection. Check if the smart plug is still connected to your home Wi-Fi network.

Device Not Responding

- **Plug unresponsive:** Try unplugging the smart plug from the wall socket, waiting 10 seconds, and plugging it back in. This can resolve temporary glitches.
- **Physical button not working:** Check if the Child Lock feature is enabled in the mEzee app. Disable it if you wish to use the physical button.

Scheduling and Automation

- **Schedules not executing:** Ensure the smart plug has a stable Wi-Fi connection. Verify that the schedules are correctly configured in the mEzee app, including time zones and active days.
- **Appliance requires manual restart after power cycle:** Some appliances do not automatically resume operation after power is restored. The smart plug cannot override this inherent behavior of the connected appliance.
- **No loop programmable:** The mEzee app's current scheduling features may not support continuous loop programming for certain advanced scenarios. Review the app's capabilities for available scheduling types.

SPECIFICATIONS

Feature	Detail
Brand	Prolink
Model	DS-3202M
Colour	White
Voltage	12 Volts
Product Dimensions (D x W x H)	5.5D x 6.1W x 5.5H centimetres
Material	Plastic
Connector Type	Type G
Number of Poles	1
Amperage	13 Amps
Item Weight	31 Grams
Included Components	Smart Plug



Wi-Fi Smart Plug

DS-3202M-UK



Remote Control



Smart Scheduler



Energy Monitoring



Voice control & Automation



Child Lock



Manage your home appliances anywhere and anytime with **DS-3202M-UK Wi-Fi Smart Plug**. Easily check and control your connected devices on your smartphone via the mEzee app. This smart plug let you set a schedule or timer to switch your devices on or off automatically. Also available in US/EU pin plug.

Key Features



Quick and Easy Setup

Easy to set up using Prolink mEzee app without any hub required.



Easy Device Sharing

Freedom to connect and share access with family members.



Schedule and Timer

Set a schedule or timer to switch your devices on or off automatically.



Voice Control and Automation

Use voice control to seamlessly to turn on and off the smart plug appliances (i.e., lights, fan and etc).



Space-saving Design

Small and compact design without blocking adjacent socket.



Child Lock

Prevent children from turning the switch on or off.



Remote Control

Control your device remotely on your smartphone anytime, anywhere.



ENERGY MONITORING

Image: A visual comparison demonstrating the compact design of the Prolink smart plug, which avoids blocking adjacent sockets on a power strip.

WARRANTY INFORMATION

The Prolink DS-3202M Smart Plug comes with a **Lifetime Local Manufacturer Warranty**. Please retain your proof of purchase for warranty claims. For specific terms and conditions, refer to the official Prolink warranty policy or contact Prolink customer support.

SUPPORT

For further assistance, technical support, or inquiries regarding your Prolink DS-3202M Smart Plug, please visit the official Prolink website or contact their customer service department.

You can also visit the [Prolink Store on Amazon](#) for product information and updates.

PRODUCT VIDEO

Your browser does not support the video tag.

Video: An official product video demonstrating the features and functionality of the PROLiNK DS-3202M Smart Plug with Energy Monitoring. This video provides a visual overview of its capabilities, including setup, app control, and energy tracking.