

## Manuals+

[Q & A](#) | [Deep Search](#) | [Upload](#)

manuals.plus /

› [Haier](#) /

› [Haier HWD80-B14979 Freestanding Washer Dryer Instruction Manual](#)

## Haier HWD80-B14979

# Haier HWD80-B14979 Freestanding Washer Dryer

*Instruction Manual*

## INTRODUCTION

---

This manual provides essential information for the safe and efficient operation, installation, and maintenance of your Haier HWD80-B14979 Freestanding Washer Dryer. Please read it thoroughly before using the appliance and retain it for future reference.

The Haier HWD80-B14979 is a versatile appliance featuring a Direct Motion Motor for quiet and durable performance, an LED display, and a combined washing and drying capacity of 8kg for washing and 5kg for drying, with a spin speed of 1400 RPM.

## IMPORTANT SAFETY INFORMATION

---

Always adhere to the following safety precautions to prevent electric shock, fire, explosion, injury, or damage to the appliance.

- Ensure the appliance is properly earthed.
- Do not allow children to play with or operate the appliance.
- Unplug the appliance before cleaning or performing maintenance.
- Do not wash or dry articles that have been cleaned in, washed in, soaked in, or spotted with combustible or explosive substances such as wax, oil, paint, gasoline, degreasers, dry-cleaning solvents, kerosene, etc.
- Keep the area around the appliance clear of obstructions.
- Do not install or store the appliance where it will be exposed to the weather or to freezing temperatures.

## PRODUCT OVERVIEW

---

The Haier HWD80-B14979 combines washing and drying functionalities in a single unit, designed for efficiency and user convenience.



Front view of the Haier HWD80-B14979 Freestanding Washer Dryer, showcasing its sleek design and control panel. The appliance is white with a large black porthole door.



The washer dryer with its door open, providing a clear view of the spacious stainless steel drum and the interior light feature.



An angled view of the Haier HWD80-B14979, highlighting its compact depth and modern aesthetic.

### Key Features:

- **Direct Motion Motor:** Belt-less motor directly attached to the drum, reducing noise and vibration, increasing durability, and improving energy efficiency.
- **Anti-Bacterial Treatment (ABT):** Protects against mould and bacteria in the detergent drawer and porthole gasket for hygienic laundry.

- **Steam Function:** Diffuses steam to relax fabric fibres, aiding in stubborn dirt removal and reducing ironing time.
- **I-Refresh Function:** Provides a professional sanitizing experience without intensive wash cycles.
- **Interior Drum Light:** Illuminates the drum for easy loading and unloading, ensuring no items are left behind.
- **Auto Weighing:** Automatically adjusts cycle time based on load size for optimal performance.

## SETUP AND INSTALLATION

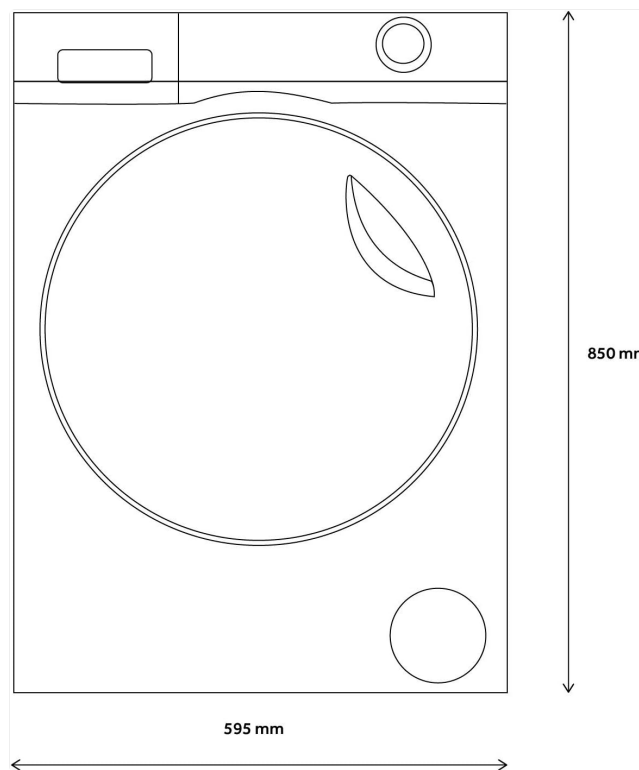
---

### Unpacking:

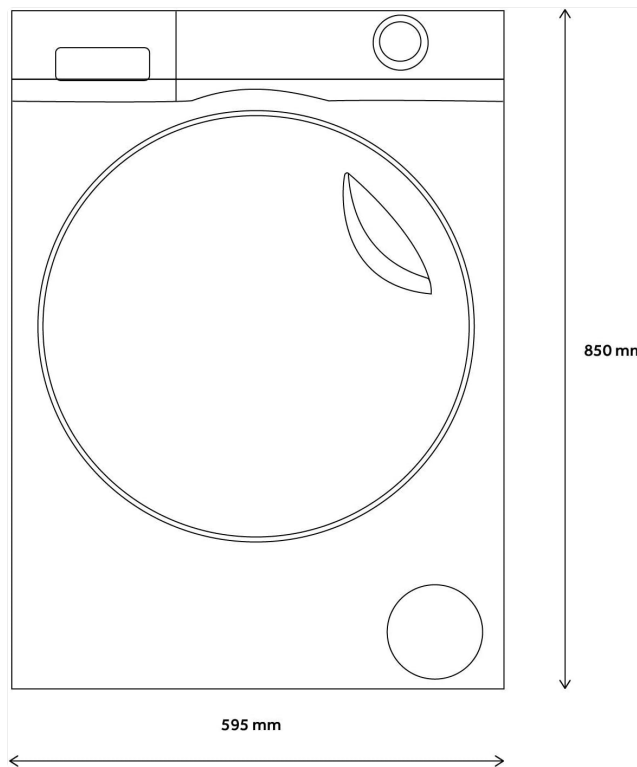
Carefully remove all packaging materials, including the transit bolts at the rear of the machine. Retain packaging for future transport if needed.

### Location:

Place the appliance on a firm, level surface. Ensure there is adequate space around the machine for ventilation and access. Avoid direct sunlight or extreme temperatures.



Front view technical drawing with dimensions: 850 mm height, 595 mm width.



Side view technical drawing with depth dimension: 460 mm.

### **Levelling:**

Adjust the adjustable feet at the bottom of the machine to ensure it is perfectly level. This prevents excessive vibration and noise during operation.

### **Water Connection:**

Connect the water inlet hose to a cold water tap. Ensure connections are tight to prevent leaks. The appliance comes with connection hoses.

### **Drainage:**

Position the drain hose securely into a standpipe or sink, ensuring it is not kinked or blocked.

### **Electrical Connection:**

Plug the appliance into a grounded electrical outlet. Ensure the voltage matches the appliance's requirements (220 Volts).

## **OPERATING INSTRUCTIONS**

---

### **Control Panel:**

The control panel features a rotary dial for program selection, touch-sensitive buttons for settings adjustments (temperature, spin speed, dry time), and an LED display for cycle information.

### **Loading Laundry:**

Open the porthole door and load laundry into the drum. Do not overload the machine. For optimal washing and drying, ensure there is enough space for clothes to tumble freely. The interior light assists with loading.



Properly loading laundry into the drum, ensuring not to overload for effective washing and drying. The machine features auto-weighing for optimal cycle adjustment.

### **Adding Detergent:**

Add appropriate detergent and fabric softener to the dispenser drawer. The machine supports various detergent types (tablet, pod, liquid).

### **Program Selection:**

Turn the program dial to select the desired wash or wash+dry cycle. Available cycles include Cotton, Synthetics, Quiet, Wool, Delicate, Dry, Express 15', Sport, and more. The machine also features specialized functions like Steam and I-Refresh.

### **Customizing Settings:**

Adjust temperature, spin speed (up to 1400 RPM), and drying level using the touch controls. You can also set a delay start time.

### **Starting a Cycle:**

Press the Start/Pause button to begin the selected program. The LED display will show the remaining time.

### **End of Cycle:**

The machine will signal when the cycle is complete. Remove laundry promptly to prevent creasing.

## **MAINTENANCE AND CLEANING**

---

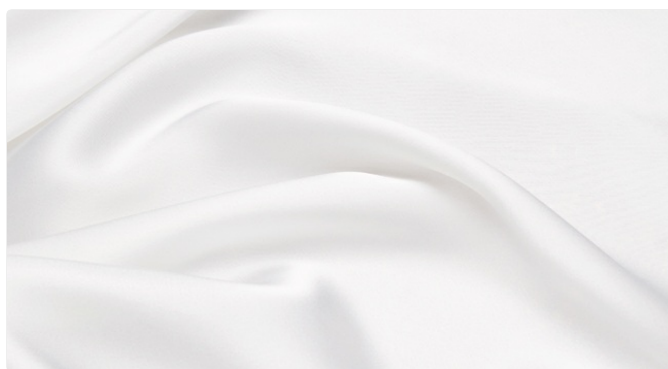
Regular maintenance ensures the longevity and optimal performance of your washer dryer.

### **Cleaning the Detergent Drawer:**

Periodically remove and clean the detergent drawer to prevent residue buildup. The Anti-Bacterial Treatment (ABT) helps keep this area hygienic.

### **Cleaning the Drum:**

Run a maintenance wash cycle (e.g., a hot wash without laundry) regularly to clean the drum and remove any detergent or fabric softener residue.



A close-up view of the stainless steel drum, designed for gentle yet effective washing and drying.

### Cleaning the Door Seal:

Wipe the rubber door seal after each wash to remove lint, hair, or moisture. The ABT also applies to the porthole gasket.

### Cleaning the Filter:

Locate and clean the drain pump filter periodically to prevent blockages and ensure efficient drainage.

### Exterior Cleaning:

Wipe the exterior surfaces with a soft, damp cloth. Do not use abrasive cleaners or solvents.

## TROUBLESHOOTING

---

This section addresses common issues you might encounter. For more complex problems, contact customer support.

Problem	Possible Cause	Solution
Machine does not start	No power; Door not closed; Program not selected; Start button not pressed.	Check power supply; Ensure door is firmly closed; Select a program; Press Start/Pause.
Excessive vibration/noise	Transit bolts not removed; Appliance not level; Uneven load.	Remove transit bolts; Adjust levelling feet; Redistribute laundry evenly.
Water leakage	Hoses loose; Drain hose blocked; Detergent drawer overflowing.	Tighten hose connections; Clear drain hose; Do not overfill detergent drawer.
Clothes not drying properly	Overloaded; Incorrect drying program; Lint filter blocked.	Reduce load size; Select appropriate drying program; Clean lint filter.
Unpleasant odour	Residue buildup; Infrequent cleaning.	Run a maintenance wash; Clean detergent drawer and door seal regularly.

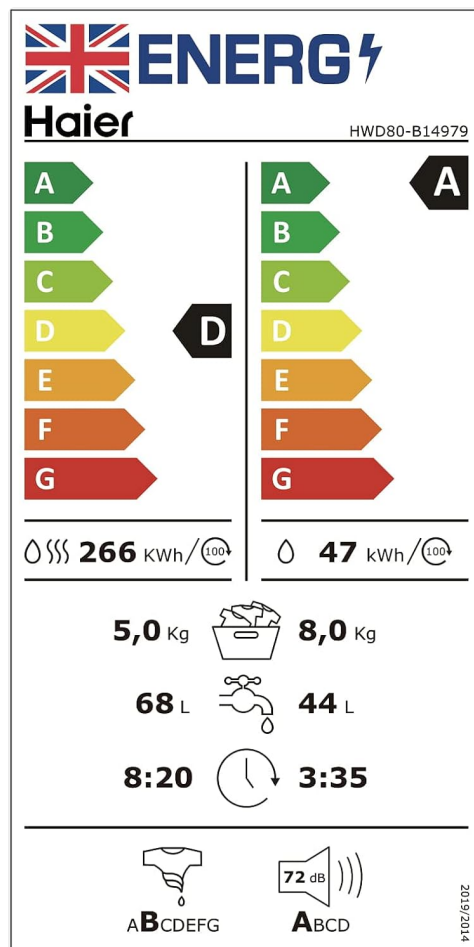
## TECHNICAL SPECIFICATIONS

---

Feature	Specification
Model Number	HWD80-B14979
Brand	Haier
Type	Freestanding Washer Dryer

Feature	Specification
Washing Capacity	8 kg
Drying Capacity	5 kg
Maximum Spin Speed	1400 RPM
Dimensions (H x W x D)	85 cm x 60 cm x 46 cm
Item Weight	75 kg
Noise Level (Spin)	73 dB
Energy Efficiency Class (Wash only)	A (New Energy Label)
Annual Energy Consumption (Wash only)	1086 kWh/year (as per old label, new label is different)
Annual Water Consumption (Wash only)	11000 Litres/year (as per old label, new label is different)
Drum Material	Stainless Steel
Controls Type	Push Button, Touch
Voltage	220 Volts

Note: Energy and water consumption figures may vary based on usage and specific program selection. The energy efficiency rating provided is based on the new EU energy label for the washing cycle only.



The energy label for the Haier HWD80-B14979, indicating its energy efficiency and consumption details. Note the new energy label system.

## WARRANTY AND SUPPORT

---

Haier offers comprehensive warranty coverage for this appliance.

- **Standard Warranty:** 5 years labour guarantee.
- **Parts Warranty:** 10 years parts guarantee.
- **Direct Motion Motor:** Lifetime guarantee on all Direct Motion Motors.

For technical assistance, warranty claims, or to purchase spare parts, please contact Haier customer service. Refer to your purchase documentation for specific contact details or visit the official Haier website.



Haier's warranty commitment, including a 5-year labour warranty and a 10-year parts warranty, demonstrating confidence in product durability.

## ADDITIONAL INFORMATION

---

### Environmental Protection:

This appliance is designed with energy and water efficiency in mind. Please dispose of packaging materials and the appliance itself responsibly, following local regulations for recycling electronic waste.

### Product Videos:

No official product videos from the seller are available for embedding in this manual.