

## TopDirect TD154

# TopDirect 23.5" Makeup Styling Mannequin Head User Manual

Model: TD154

## 1. INTRODUCTION

Thank you for choosing the TopDirect 23.5" Makeup Styling Mannequin Head. This product is designed for professional and personal use, ideal for practicing various hairdressing techniques and makeup application. Featuring 80% real human hair, it offers a realistic experience for styling, cutting, coloring, and more.

Please read this manual thoroughly before using the product to ensure proper handling, maintenance, and to maximize its lifespan.

## 2. SAFETY INSTRUCTIONS

- Keep the mannequin head away from open flames or excessive heat sources.
- Ensure the table clamp stand is securely fastened to a stable surface before attaching the mannequin head.
- Avoid using harsh chemicals or abrasive cleaners on the mannequin head's face or hair.
- When using heat styling tools (curling irons, straighteners), ensure the temperature is appropriate for human hair and do not leave tools on the hair for extended periods.
- Supervise children when they are using the product, especially with sharp tools or heat.

## 3. PACKAGE CONTENTS

Verify that all items are present in your package:

- 1 x TopDirect 23.5" Mannequin Head (Beige)
- 1 x Table Clamp Stand
- 1 x DIY Hairdressing Braid Set (various accessories)



Image: The TopDirect 23.5 inch Mannequin Head, shown with its included table clamp stand and a variety of hair accessories such as bows, clips, and elastic bands.

## 4. SETUP

1. **Attach the Table Clamp Stand:** Securely fasten the table clamp stand to a sturdy table or counter edge. Tighten the screw until the stand is firm and stable.
2. **Mount the Mannequin Head:** Insert the bottom pole of the mannequin head into the opening on the top of the table clamp stand. Ensure it is fully seated and stable.

## 5. OPERATING INSTRUCTIONS

### 5.1 Hair Care and Preparation

- **Initial Brushing:** Upon first use, gently brush the hair from the ends upwards to remove any loose strands. It is normal for some hair to shed during the first few uses, similar to human hair. This will decrease over time.
- **Washing and Conditioning:** The hair can be washed and conditioned using standard hair products. Use lukewarm water and gently massage the shampoo into the hair. Rinse thoroughly and apply conditioner.

- **Drying:** Allow the hair to air dry or use a hairdryer on a low heat setting. Avoid excessive heat to prevent damage.

## 5.2 Hair Styling Techniques

The 80% real human hair allows for a wide range of styling options:



### 80% Real Human Hair

Individual Hair Length: 60cm/23.5inch

 <p><b>Hair Curling</b></p>	 <p><b>Straighten Hair</b></p>		
 <p><b>Bleach Hair</b></p>	 <p><b>Blow Hairstyle</b></p>		
 <p><b>Make Up</b></p>	 <p><b>Cutting</b></p>	 <p><b>Braid Hair</b></p>	 <p><b>Yaki Curly Hair</b></p>

Image: A visual guide showing the mannequin head's hair being used for curling, straightening, bleaching, blow styling, cutting, and braiding.

# 80% Real Human Hair

Design according to human hair

60cm/23.5"

**1** TOP  
HANDMADE INSERT THICK HAIR  
CAN DO ANY HAIR STYLING

**CURLING 2**  
100% REAL HUMAN HAIR  
VIVID TOUCH FEELING,  
EASY TO COMBINE

**3** STRAIGHTEN  
CAN MAKE-UP, CAN BE REMOVED  
DRESS UP YOUR DOLL AS YOU LIKE

Image: A diagram illustrating the 23.5-inch hair length, handmade thick hair insert, and the ability to curl and straighten the 100% real human hair component.

- **Curling:** Use a curling iron or rollers. For best results, apply a heat protectant spray.
- **Straightening:** Use a flat iron. Ensure the hair is completely dry before straightening.
- **Braiding:** Practice various braiding styles, from simple three-strand braids to more complex designs.
- **Cutting:** The hair can be cut and layered. Use professional hairdressing scissors for clean cuts.
- **Bleaching/Dyeing:** The real human hair component allows for chemical treatments. Perform a strand test first to observe results.
- **Blow Styling:** Use a hairdryer and brush to create different volumes and shapes.



Image: A close-up view of a hand using a flat iron to straighten a section of the mannequin head's wavy hair, demonstrating the hair's ability to be heat-styled.

### **5.3 Makeup Application**

The mannequin head's face is suitable for makeup practice.

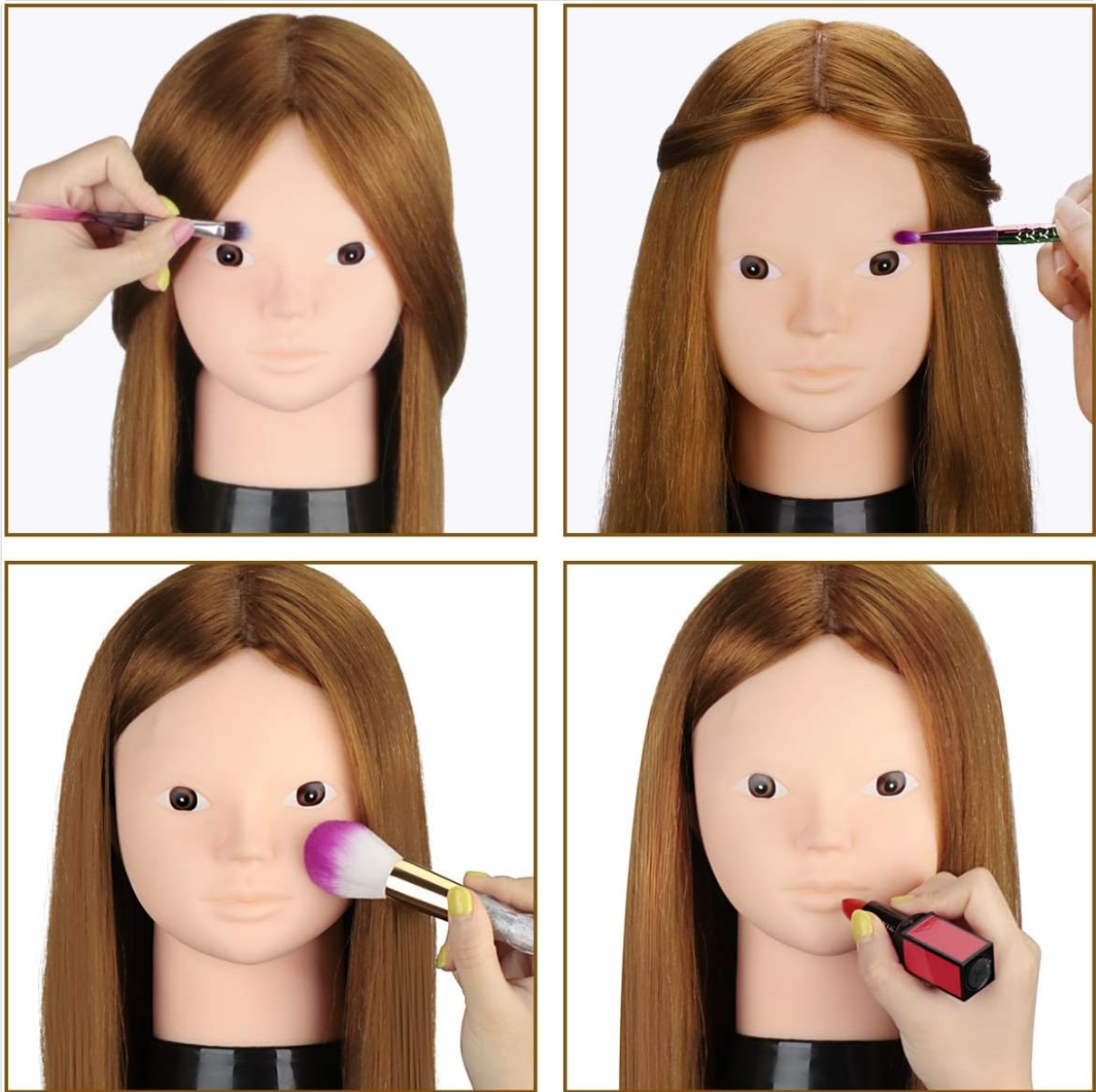


Image: A four-panel image illustrating the process of applying makeup to the mannequin head, including eyeshadow, blush, and lipstick.

- **Application:** Apply makeup as you would on a human face, using brushes, sponges, and other tools.
- **Removal:** Use a gentle makeup remover or micellar water to clean the face. For waterproof makeup, a two-phase liquid remover is recommended. Avoid harsh scrubbing to preserve the face's surface.

## Before Makeup

## After Makeup



Image: A side-by-side comparison showing the mannequin head before and after makeup application, highlighting the transformation.

## 6. MAINTENANCE

- **Hair Care:** Regularly wash and condition the hair, especially after applying styling products or chemical treatments.
- **Face Cleaning:** Clean the face after each makeup session to prevent staining.
- **Storage:** Store the mannequin head in a clean, dry place, away from direct sunlight and dust. You may cover it with a cloth to protect the hair and face.
- **Brushing:** Always brush the hair gently, starting from the ends and working your way up to the roots, to prevent tangling and excessive shedding.

## 7. TROUBLESHOOTING

Problem	Possible Cause	Solution
---------	----------------	----------

Problem	Possible Cause	Solution
Excessive hair shedding	Normal for first few uses; rough brushing; tangles	Brush gently from ends up; ensure hair is detangled before brushing. Shedding will reduce over time.
Hair tangles easily	Lack of conditioning; improper brushing technique	Use conditioner regularly; brush gently from ends up.
Makeup stains on face	Not cleaned immediately; waterproof makeup without proper remover	Clean face immediately after use. Use a two-phase makeup remover for stubborn or waterproof makeup.

## 8. SPECIFICATIONS

Feature	Detail
Brand	TopDirect
Model Number	TD154
Hair Material	80% Real Human Hair
Hair Length	60 cm / 23.5 inches (from forehead to hair tip)
Hair Density	230-260 hairs per cm <sup>2</sup>
Color	Beige
Package Dimensions	27.4 x 18.9 x 14.9 cm
Item Weight	960 grams

## 9. WARRANTY AND SUPPORT

For any questions, concerns, or support needs regarding your TopDirect Mannequin Head, please contact TopDirect customer service through the platform where you purchased the product. Please have your order details and model number (TD154) ready for faster assistance.

This product is designed for durability and performance. Adhering to the care and maintenance instructions will help ensure its longevity.