

iKKEGOL 10717

iKKEGOL Upgraded USB Triple Foot Pedal Switch Instruction Manual

Model: 10717

Brand: iKKEGOL

PRODUCT OVERVIEW

The iKKEGOL Upgraded USB Triple Foot Pedal Switch is a versatile, programmable HID device designed to enhance computer interaction by providing hands-free control. It features three durable, sensitive optical switches with minimal resistance, ensuring long-lasting comfort and reliable performance. This device can be programmed to mimic keyboard functions, mouse clicks, multimedia controls, or custom strings, making it suitable for various applications from gaming and transcription to medical facilities and industrial control. The ergonomic design includes a wide pedal and anti-slip TPU rubber feet on the base to prevent sliding during use. It supports multiple operating systems including Windows, Mac, Linux, and Android, though initial configuration requires a Windows PC.

PACKAGE CONTENTS

- 1x iKKEGOL Upgraded USB Triple Foot Pedal Switch

SETUP INSTRUCTIONS

1. **Download Software:** Download the latest configuration software from the official PCsensor website: http://software.pcsensor.com/pc_en.html.
2. **Connect Pedal:** Plug the USB foot pedal into an available USB port on your Windows computer.

3. **Install Software:** Install the downloaded software on your Windows PC.
4. **Configure Functions:** Open the software and select the desired function for each pedal from the available options (e.g., keyboard key, mouse click, string, multimedia control, game action).
5. **Save Settings:** Once configured, save the settings to the foot pedal. The settings are stored directly on the device.
6. **Plug and Play:** After configuration, the foot pedal can be plugged into any compatible system (Mac, Linux, Android, etc.) and will function as programmed without needing additional software installation on those systems.

Visual Guide: Connecting and Configuring the Foot Pedal

Your browser does not support the video tag.

Video Description: This video demonstrates how to configure a PCsensor foot pedal using the Elfkey software. It shows the process of downloading the software, connecting the pedal, and assigning various functions to the pedal buttons. This is crucial for customizing the triple foot pedal to your specific needs.

Your browser does not support the video tag.

Video Description: This video provides an overview of a mechanical wireless Bluetooth USB triple foot pedal switch. While this product is primarily USB, the video highlights the versatility of triple pedal designs and their potential for various applications, including those with Bluetooth connectivity options as listed in the product's specifications.

OPERATING INSTRUCTIONS

Once configured, operate the foot pedal by pressing the individual pedals with your foot. The optical switches provide a quiet and responsive action. The assigned functions will execute on your computer as if you were using the corresponding keyboard key or mouse action.

- **Single Trigger:** For functions like a single key press or mouse click.
- **Continuous Trigger:** For functions that require holding down a key, such as push-to-talk in communication applications.
- **Multi-key Combination:** Program complex key combinations for shortcuts or macros.

Visual Guide: Product Features and Usage

Your browser does not support the video tag.

Video Description: This video, titled "Hands Busy? Control Everything with Your Feet!", showcases the practical applications and benefits of using the iKKEGOL triple foot pedal. It illustrates how the device allows users to perform various computer actions hands-free, improving efficiency in tasks like gaming, transcription, and more.

FEATURES AND FUNCTIONS

- **Multifunctional:** Assign single keyboard functions, shortcut keys, hotkeys, combined keys, mouse clicks, custom strings, multimedia controls, or game actions.
- **Quiet Optical Switches:** Utilizes upgraded optical switches for quiet operation, suitable for office or home environments.

- **Ergonomic Design:** Wide pedals and large size provide long-lasting comfort for your feet.
- **Durable Construction:** Built with sensitive switches and capable of bearing over 100kg of weight.
- **Anti-Slip Base:** Equipped with 4 TPU rubber feet to ensure stability on hard floors.
- **System Compatibility:** Supports DOS, Windows (2000, XP, 7, 8, 10), Linux, Mac, and Android.
- **USB Connectivity:** Standard USB connection with a 1.8M/6ft cable length.

Product Images



Image Description: A top-down view of the iKKEGOL Upgraded USB Triple Foot Pedal Switch, highlighting its overall dimensions (14.5 inches wide, 5.6 inches deep, 1.7 inches high). The three pedals are clearly visible, arranged in a slightly curved ergonomic layout.



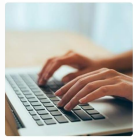
Image Description: A side view of the iKKEGOL Triple Foot Pedal, focusing on the USB cable connection point. This view emphasizes the compact profile and the integrated cable management.



There are 3 TPU rubber can be used on hard floors, anti-slip backing helps ensure it stays right where you want it, no slip and slide.

Image Description: The bottom view of the iKKEGOL Triple Foot Pedal, clearly showing the anti-slip TPU rubber feet designed to keep the device stable on various surfaces during use. This view also reveals the model number and other regulatory markings.

WINDOWS, LINUX, MAC, ANDRIOD



Office as keyboard and Mouse function
Can replace any key and key combination



Game controller Function
It can be replace any two key for game controller



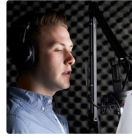
Pedal Page Turner



Factory test and instrument control



Medical equipment
It can be customized key via foot switch used in Ultrasound instrument for capture image



Multimedia function
Supports play audio and adjust volume

Image Description: A collage illustrating diverse applications of the iKKEGOL Triple Foot Pedal. It shows scenarios such as office work, gaming, medical equipment control, multimedia functions, and factory testing, demonstrating its versatility.



Image Description: The iKKEGOL Triple Foot Pedal is shown in a music studio environment, positioned on a wooden floor near a guitar amplifier. This image suggests its utility for musicians for hands-free control during performances or recording sessions.



Image Description: A comparison image showcasing the

