

SP CONNECT 688045-00-71-Stck

SP CONNECT SPC Anti-Vibration Module Chrome Single User Manual

Model: 688045-00-71-Stck

Brand: SP CONNECT

INTRODUCTION

The SP CONNECT SPC Anti-Vibration Module Chrome is designed to protect sensitive smartphone components from the vibrations generated by motorcycle engines. This module integrates seamlessly with compatible SP CONNECT mounting systems, providing a secure and vibration-damped platform for your device. By isolating your smartphone from direct engine vibrations, it helps prevent potential damage to internal components, ensuring the longevity and reliable operation of your device during rides.

WHAT'S IN THE BOX

Verify that all components are present before proceeding with installation.

- SP CONNECT SPC Anti-Vibration Module Chrome (1 unit)
- Screws: M5x16mm (0.63 inch) (quantity as required for installation)
- Screws: M5x20mm (0.79 inch) (quantity as required for installation)



Image: The SP CONNECT Anti-Vibration Module in chrome, designed to integrate with existing SP CONNECT mounts. A compatible mount is shown in a faded outline, indicating where the module replaces the standard head.

FEATURES

- **Advanced Vibration Damping:** Utilizes a specially developed elastomer inlay for 3D vibration damping, protecting sensitive smartphone components.

- **Premium Construction:** CNC machined from aircraft-grade aluminum for durability and a precise fit.
- **Versatile Orientation:** Supports both portrait and landscape orientation for smartphone use.
- **Adjustable Rotation:** Offers 360° rotation in 6° increments for optimal viewing angles.
- **Seamless Integration:** Designed to replace the head of compatible SP CONNECT mounts.



Image: A detailed close-up of the chrome anti-vibration module, highlighting its polished surface, black elastomer ring, and screw points.

SETUP AND INSTALLATION

This module is designed to replace the existing mounting head on compatible SP CONNECT mounts. Ensure your motorcycle is stable and turned off before beginning installation.

1. **Identify Compatible Mount:** Ensure you have an SP CONNECT mount that allows for the replacement of its head.
2. **Remove Existing Head:** Carefully unscrew and remove the current mounting head from your SP CONNECT mount. Retain any screws or washers if they are not being replaced by the new ones provided.
3. **Position the Anti-Vibration Module:** Place the SP CONNECT SPC Anti-Vibration Module onto the mount's arm, aligning the screw holes.
4. **Secure the Module:** Use the provided M5x16mm or M5x20mm screws (choose the appropriate length for your specific mount) to securely fasten the anti-vibration module to the mount. Tighten screws firmly but do not overtighten.
5. **Verify Stability:** Once installed, gently test the module's stability on the mount to ensure it is securely attached and does not wobble.



Image: The anti-vibration module is shown securely installed on a motorcycle's handlebar mount, ready for a smartphone to be attached.

OPERATING INSTRUCTIONS

Once the Anti-Vibration Module is installed, attaching and detaching your smartphone is simple and intuitive.

1. **Prepare Smartphone:** Ensure your smartphone is equipped with a compatible SP CONNECT phone case or universal adapter.
2. **Attach Smartphone:** Place your smartphone (with SP CONNECT case) onto the anti-vibration module, aligning the phone case's locking mechanism with the module's interface.
3. **Lock in Place:** Rotate your smartphone 90° clockwise until it audibly clicks into place. This secures the phone firmly to the module.
4. **Adjust Orientation:** If desired, rotate the phone to your preferred portrait or landscape orientation. The module allows for 360° rotation in 6° increments.
5. **Detach Smartphone:** To remove your smartphone, rotate it 90° counter-clockwise until it unlocks, then lift it off the

module.



Image: A smartphone is shown securely attached to the anti-vibration module on a motorcycle, demonstrating its operational use.



Image: The anti-vibration module with a smartphone displaying a navigation map, illustrating its practical application during a ride.

MAINTENANCE

Proper maintenance ensures the longevity and optimal performance of your Anti-Vibration Module.

- **Cleaning:** Wipe the module with a soft, damp cloth to remove dust and grime. Avoid abrasive cleaners or solvents that could damage the chrome finish or elastomer.
- **Inspection:** Periodically inspect the module and its connection to the mount for any signs of wear, loose screws, or damage. Ensure the elastomer inlay is intact and free from cracks.
- **Storage:** If not in use for extended periods, store the module in a clean, dry place away from extreme temperatures.

TROUBLESHOOTING

Problem	Possible Cause	Solution
---------	----------------	----------

Problem	Possible Cause	Solution
Module feels loose on the mount.	Mounting screws are loose.	Tighten the M5 screws securing the module to the mount. Do not overtighten.
Smartphone does not lock securely.	Incorrect alignment or obstruction.	Ensure the smartphone case is correctly aligned with the module's interface. Check for any debris obstructing the locking mechanism.
Vibrations still felt on smartphone.	Extreme vibration levels or module damage.	While the module significantly reduces vibrations, some minimal vibration may still be present under extreme conditions. Inspect the elastomer inlay for damage. If damaged, replacement may be necessary.

SPECIFICATIONS

- Model Number:** 688045-00-71-Stck
- Material:** CNC machined aircraft-grade aluminum, Elastomer inlay
- Color:** Chrome
- Dimensions:** Approximately 1.97 x 1.97 x 0.47 inches (50 x 50 x 12 mm)
- Weight:** Approximately 2.36 ounces (67 grams)
- Compatibility:** Compatible with SP CONNECT mounting systems that allow for interchangeable heads.

SAFETY INFORMATION



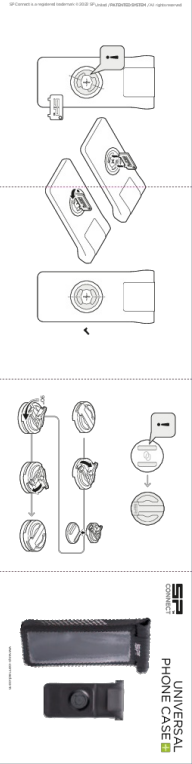
- Please read and understand all safety information before using the product.
- Ensure the module is securely installed and your smartphone is properly locked before riding.
 - Do not attempt to adjust the module or smartphone while operating the motorcycle.
 - Regularly check the module and mount for any signs of wear or damage. Replace components if necessary.
 - The anti-vibration module is designed to reduce vibrations, but it cannot eliminate all vibrations. Always exercise caution and be aware of your surroundings.

WARRANTY AND SUPPORT

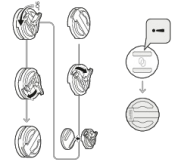
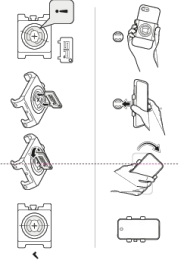
This product is covered by the manufacturer's standard warranty. For detailed warranty information, product support, or to purchase replacement parts, please visit the official SP CONNECT website or contact their customer service. For further assistance, you may also refer to the [SP CONNECT Store on Amazon](#).



Related Documents

	<p>SP Connect Charging Anti-Vibration Module SPC+ User Guide and Specifications</p> <p>Comprehensive guide and technical specifications for the SP Connect Charging Anti-Vibration Module SPC+, including installation tips, safety warnings, and compliance information.</p>
	<p>SP Connect 12V Hard Wire Cable Installation Guide</p> <p>A comprehensive guide to installing the SP Connect 12V Hard Wire Cable, featuring step-by-step instructions, safety warnings, and technical specifications for direct fast charging via USB-C.</p>
	<p>SP Connect Universal Phone Case Instructions</p> <p>Step-by-step guide on how to use and attach the SP Connect Universal Phone Case.</p>

SP Connect is a registered trademark of SP Connect, INC. All rights reserved.



[SP Connect Universal Phone Clamp Instructions and Features](#)

Detailed instructions and overview of the SP Connect Universal Phone Clamp, a patented system for securely mounting smartphones.