

## Kranzle HD9-80

# Kranzle HD9-80 High Pressure Washer User Manual

Model: HD9-80 | Brand: Kranzle

## 1. INTRODUCTION AND OVERVIEW

The Kranzle HD9-80 is a robust and efficient high-pressure washer designed for professional and demanding cleaning tasks. Its compact design, durable motor, and high-quality components ensure reliable performance for various applications, from vehicle cleaning to maintaining outdoor areas. This manual provides essential information for the safe and effective operation, maintenance, and troubleshooting of your Kranzle HD9-80 pressure washer.

## 2. SAFETY INSTRUCTIONS

Always prioritize safety when operating any high-pressure equipment. Failure to follow these instructions could result in serious injury or property damage.

- **Read the Manual:** Always read and understand this entire user manual before operating the pressure washer.
- **Personal Protective Equipment (PPE):** Wear appropriate PPE, including eye protection (safety glasses or goggles), hearing protection, and sturdy, non-slip footwear.
- **Electrical Safety:** Ensure the power source matches the unit's requirements (voltage and frequency). Always plug the unit into a grounded outlet protected by a Ground Fault Circuit Interrupter (GFCI). Do not operate with damaged cords or plugs.
- **Water Pressure Hazards:** Never point the spray gun at people, pets, or electrical equipment. The high-pressure spray can cause severe injuries.
- **Stable Surface:** Operate the pressure washer on a stable, level surface to prevent tipping.
- **Children and Pets:** Keep children and pets away from the operating area.
- **Ventilation:** Ensure adequate ventilation if operating in an enclosed space, especially if using a model with a combustion engine (though this model is electric).
- **Chemicals:** Use only detergents approved for pressure washers. Follow detergent manufacturer's instructions for use and disposal.
- **Maintenance:** Disconnect the power supply before performing any maintenance or cleaning.

## 3. PACKAGE CONTENTS

Carefully unpack all components and ensure all items are present and undamaged. If any items are missing or damaged, contact your retailer immediately.

- Kranzle HD9-80 Pressure Washer Unit

- High-Pressure Hose (10 meters)
- Spray Gun
- Lance with Nozzle



Image 1: Components of the Kranzle HD9-80 High Pressure Washer, including the main unit, high-pressure hose, and spray gun with lance, shown separately before assembly.



Image 2: The Kranzle HD9-80 High Pressure Washer fully assembled, showing the main unit connected to the high-pressure hose and spray gun with lance.

## 4. SETUP

Follow these steps to set up your pressure washer before first use.

1. **Connect Water Supply:** Connect a garden hose (not supplied) to the water inlet of the pressure washer. Ensure the water source is clean and provides sufficient flow (minimum 8 liters per minute). Turn on the water supply fully.
2. **Attach High-Pressure Hose:** Securely connect one end of the 10-meter high-pressure hose to the high-pressure outlet on the washer unit. Connect the other end to the inlet on the spray gun.
3. **Assemble Spray Gun and Lance:** Attach the lance firmly to the spray gun handle. Ensure it clicks into place or is securely threaded, depending on the connection type.
4. **Purge Air from System:** Before plugging in the unit, squeeze the trigger on the spray gun and allow water to flow through the system for about 30 seconds until a steady stream of water emerges without air.

bubbles. This primes the pump and prevents damage.

- 5. **Electrical Connection:** Plug the power cord into a suitable grounded electrical outlet. Ensure the outlet is protected by a GFCI (Ground Fault Circuit Interrupter).

## 5. OPERATING INSTRUCTIONS

Once set up, your Kranzle HD9-80 is ready for operation.

- 1. **Starting the Unit:** With the water supply on and the system purged of air, turn the power switch on. The motor will start.
- 2. **Using the Spray Gun:** Squeeze the trigger on the spray gun to begin spraying. The motor will run continuously or cycle on/off depending on the model's auto-stop feature.
- 3. **Cleaning Technique:** Hold the spray gun firmly with both hands. Start spraying from a distance of approximately 30 cm (12 inches) from the surface and gradually move closer if needed, being careful not to damage the surface. Use sweeping motions to ensure even cleaning.
- 4. **Applying Detergent (if applicable):** If your model supports detergent application, follow the specific instructions for your unit and the detergent product.
- 5. **Shutting Down:**
  - Release the spray gun trigger.
  - Turn off the power switch on the unit.
  - Turn off the water supply at the faucet.
  - Squeeze the spray gun trigger again to release any remaining pressure in the hose and pump. This is crucial for safe disconnection and storage.
  - Disconnect the high-pressure hose and store it properly.

## 6. MAINTENANCE

Regular maintenance is essential for the longevity and optimal performance of your Kranzle HD9-80 pressure washer.

- **After Each Use:** Disconnect the water supply and power. Drain all water from the pump and hose, especially before storing in freezing temperatures to prevent damage from ice expansion.
- **Inspect Hoses and Cords:** Regularly check the high-pressure hose, power cord, and all connections for any signs of wear, cuts, kinks, or leaks. Replace damaged components immediately.
- **Clean Water Inlet Filter:** Periodically check and clean the water inlet filter to prevent debris from entering the pump. A clogged filter can reduce performance and damage the pump.
- **Nozzle Maintenance:** If the spray pattern becomes irregular or pressure drops, the nozzle may be partially clogged. Clean the nozzle using the provided nozzle cleaning tool or a thin wire.
- **Storage:** Store the pressure washer in a dry, frost-free environment. Coil the high-pressure hose and power cord neatly.

## 7. TROUBLESHOOTING

This section provides solutions to common issues you might encounter.

Problem	Possible Cause	Solution
---------	----------------	----------

Problem	Possible Cause	Solution
Unit does not start	No power supply; Power switch off; GFCI tripped	Check power cord connection; Turn power switch on; Reset GFCI
No pressure or low pressure	Insufficient water supply; Air in pump; Clogged nozzle; Leaks in hose/connections	Ensure full water flow; Purge air from system; Clean nozzle; Check for leaks and tighten connections
Motor pulsates or cycles on/off frequently	Air in pump; Clogged nozzle; Water supply restriction; Leak in system	Purge air; Clean nozzle; Check water inlet filter and supply hose; Inspect for leaks
Water leaking from pump	Loose connection; Damaged seal/O-ring	Tighten connections; Contact service for seal replacement

## 8. SPECIFICATIONS

Technical details for the Kranzle HD9-80 High Pressure Washer.

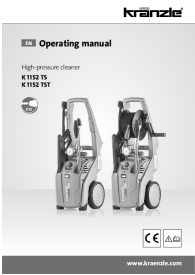



Specification	Detail
Manufacturer	Kranzle
Model Number	HD9-80
Item Weight	19 Kilograms
Power Source	Corded Electric
Hose Length	10 Meters
Specification Met	CE, CSA

## 9. WARRANTY AND SUPPORT

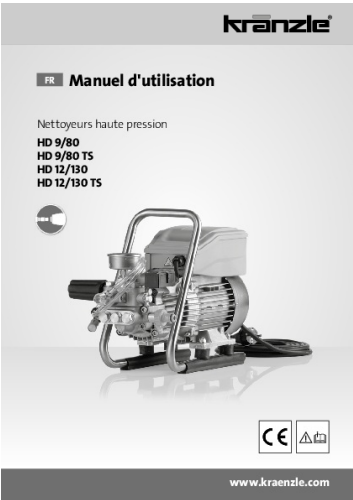
For warranty information, technical support, or to purchase replacement parts, please contact Kranzle customer service or visit the official Kranzle website. Keep your purchase receipt as proof of purchase for any warranty claims.

**Kranzle Official Website:** [www.kraenzle.com](http://www.kraenzle.com)

### Related Documents

	<p><a href="#">Kränzle K 1152 TS / TST High-Pressure Cleaner Operating Manual</a></p> <p>Comprehensive operating manual for Kränzle K 1152 TS and K 1152 TST high-pressure cleaners. Covers safety instructions, product description, operation, maintenance, troubleshooting, and accessories.</p>
	<p><a href="#">Kränzle K 1322 TS High-Pressure Cleaner Operating Manual</a></p> <p>Comprehensive operating manual for the Kränzle K 1322 TS high-pressure cleaner, covering safety instructions, product description, general rules, functional details, operation, maintenance, troubleshooting, accessories, technical data, and spare parts.</p>
	<p><a href="#">Kränzle High Pressure Cleaner Parts &amp; Accessories Catalogue</a></p> <p>Comprehensive parts and accessories catalogue for Kränzle high-pressure cleaning equipment, featuring trigger guns, lances, nozzles, hoses, filters, and repair kits. Includes product specifications and order numbers for maintenance and repair.</p>
	<p><a href="#">Kränzle Quickly Hochdruckreiniger: Original Betriebsanleitung</a></p> <p>Offizielle Betriebsanleitung für den Kränzle Quickly Hochdruckreiniger. Enthält detaillierte Informationen zu Sicherheit, Bedienung, Wartung, Fehlerbehebung und Zubehör.</p>

Documents - Kranzle – HD9-80



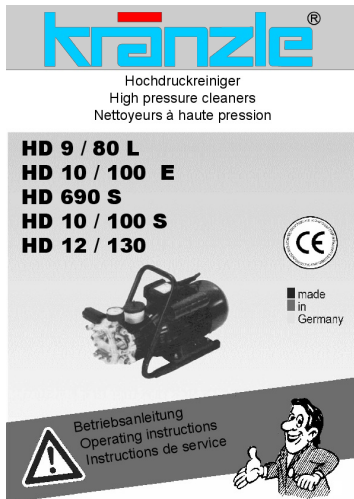
[\[pdf\]](#)

HD9 80 80TS HD12 130 130TS avec raccord rapide FR kranzle fr kraenzle 2014 01 Manuel d utilisation

|||

FR Manuel d utilisation Nettoyeurs haute pression HD 9/80 HD 9/80 TS HD 12/130 HD 12/130 TS [www.kraenzle.com](http://www.kraenzle.com) Manuel d utilisation FR Nettoyeurs haute pression HD 9/80 HD 9/80 TS HD 12/130 HD 12/130 TS Manuel d utilisation Le prsent manuel d utilisation est la traduction du manuel d utilisation...

lang:fr score:13 filesize: 5.49 M page\_count: 21 document date: 2021-02-09



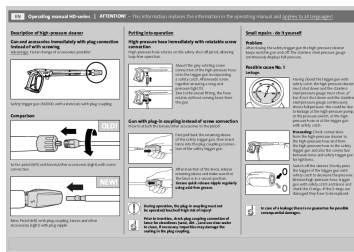
### [pdf] User Manual

HD 9 80 L 10 100 E 690 S 12 130 HD9 80L 100E 690S 100S Stand 2013 02 181 kranzle fr kraenzle 2014 07 |||

R Hochdruckreiniger High pressure cleaners Nettoyeurs haute pression HD 9 / 80 L HD 10 / 100 E HD 690 S HD 10 / 100 S HD 12 / 130

BOelntprseietrrbaustciantingolneinsitsudtnreugcsteiorvnisce D Beschreibung GB Description Sehr verehrter Kunde Dear Customer Wir mchten Sie zu Ihrem neuen Hoch- We...

lang:en score:12 filesize: 3.43 M page\_count: 40 document date: 2014-01-20



### [pdf] User Manual Accessories

OLD! Kränzle EN Having closed the trigger gun with safety catch high pressure cleaner must shut down and stainless steel gauge show „0 HD9 80 HD12 130 kranzle fr kraenzle 2014 01 |||

EN Operating manual HD-series ATTENTION This information replaces the information in the operating manual and applies to all languages Description of high-pressure cleaner Gun and accessories immediately with plug connection instead of with screwing Advantage: Faster change of accessories possi...

lang:en score:11 filesize: 449.69 K page\_count: 1 document date: 2020-12-05