

## ELECOM M-XGM10DBWH

# ELECOM M-XGM10DBWH/EC Wireless 5-Button BlueLED Mouse User Manual

Model: M-XGM10DBWH/EC

Brand: ELECOM

## 1. PRODUCT OVERVIEW

The ELECOM EX-G M-XGM10DBWH/EC is a 5-button wireless mouse designed for comfort and efficiency. It features an ergonomic shape that fits naturally in the hand, a high-precision BlueLED sensor, and customizable buttons.



Image 1.1: ELECOM M-XGM10DBWH/EC Wireless Mouse and USB receiver.

### Key Features:

- **Ergonomic Design:** Shaped to fit the hand comfortably, reducing strain during prolonged use.
- **5-Button Functionality:** Includes left, right, scroll wheel, and dedicated 'forward' and 'back' buttons for enhanced navigation.
- **BlueLED Sensor:** High-precision tracking (2000 DPI) works reliably on various surfaces, including uneven or dusty ones.
- **2.4GHz Wireless Connectivity:** Provides a stable connection with a range of up to 10m on non-magnetic surfaces and 3m on magnetic surfaces.
- **Micro USB Receiver:** Compact receiver can be stored inside the mouse body for portability and to prevent loss.
- **OMRON Switches:** Durable and reliable switches for the left and right buttons, known for their satisfying click feel.

- **Customizable Buttons:** Use the free 'ELECOM Mouse Assistant' software to assign preferred functions to each button.
- **Battery Indicator:** A lamp notifies you when the battery needs replacement.
- **Power Switch:** Located on the bottom of the mouse to conserve battery when not in use.

## 2. SETUP

---

### 2.1 Package Contents

- ELECOM M-XGM10DBWH/EC Wireless Mouse
- Micro USB Receiver
- AA Alkaline Battery (for operation check) x 1
- User's Manual (this document)

### 2.2 Installing the Battery

1. Turn the mouse over.
2. Locate the battery cover on the bottom of the mouse.
3. Slide the battery cover open.
4. Insert one AA alkaline battery, ensuring correct polarity (+/-).
5. Close the battery cover securely.

### 2.3 Connecting the USB Receiver

1. Locate an available USB Type-A port on your computer (Windows OS, macOS, or Chrome OS).
2. Remove the micro USB receiver from its storage slot on the bottom of the mouse, if it is stored there.
3. Insert the micro USB receiver firmly into the USB port on your computer.
4. Your computer should automatically detect and install the necessary drivers. This may take a few moments.



# Chromebook 対応認定



※この製品は、Google の互換性基準を満たすためにエレコム株式会社によって認定されています。  
Google は、この製品の動作や、該当する安全要件やその他の安全要件の遵守について責任を負いません。  
この製品は、製品の契約条件に従ってエレコム株式会社によってのみサービスおよびサポートされます。  
テクニカルサポートとカスタマーサービスについては、エレコム株式会社に直接お問い合わせください。  
Chromebook 及び "Works With Chromebook" のラベルは、Google LLC の商標です。

Image 2.1: The mouse is compatible with Chromebooks. Simply plug in the USB receiver.

## 2.4 Powering On the Mouse

1. Locate the power switch on the bottom of the mouse.
2. Slide the switch to the 'ON' position.
3. The mouse is now ready for use.



※画像はM-XGM10DBBKです

Image 2.2: Bottom view of the mouse, highlighting the optical sensor, battery compartment, receiver storage, and power switch.

### 3. OPERATING INSTRUCTIONS

#### 3.1 Basic Operation

- **Left Click:** Primary button for selecting items and interacting with software.
- **Right Click:** Secondary button for context menus and additional options.
- **Scroll Wheel:** Scroll up or down through documents and web pages. Pressing the wheel often acts as a middle click.

#### 3.2 Advanced Button Functions

This mouse features five buttons, including dedicated 'forward' and 'back' buttons for efficient web browsing and document navigation.

# 押しやすいボタン配置

無料ソフト「エレコムマウスアシスタント」で  
ボタン機能を自由に割り当て可能です

## デフォルト機能



Image 3.1: Button layout of the ELECOM mouse.

- **Forward Button:** Navigates forward in web browsers or file explorers.
- **Back Button:** Navigates backward in web browsers or file explorers.

### 3.3 Customizing Buttons with ELECOM Mouse Assistant

You can customize the functions of each button using the free 'ELECOM Mouse Assistant' software. This software allows you to assign various functions to suit your workflow.

1. Download the 'ELECOM Mouse Assistant' software from the official ELECOM website.
2. Install the software on your computer.
3. Launch the application and follow the on-screen instructions to customize button assignments.



Image 3.2: ELECOM Mouse Assistant software icon for button customization.

## 4. MAINTENANCE

---

### 4.1 Cleaning the Mouse

- Ensure the mouse is turned off before cleaning.
- Use a soft, dry cloth to wipe the surface of the mouse.
- For stubborn dirt, slightly dampen the cloth with water or a mild cleaning solution. Avoid excessive moisture.
- Do not use abrasive cleaners, solvents, or aerosol sprays.
- Clean the optical sensor area gently with a cotton swab if tracking issues occur.

### 4.2 Battery Replacement

The mouse is equipped with a battery level indicator lamp. When the lamp indicates low battery, replace the AA battery as described in Section 2.2.

## 5. TROUBLESHOOTING

---

### 5.1 Mouse Not Responding

- Ensure the mouse power switch is in the 'ON' position.
- Check if the battery is correctly installed and has sufficient charge. Replace if necessary.
- Verify that the USB receiver is securely plugged into a working USB port on your computer. Try a different USB port.
- Move the mouse closer to the USB receiver to ensure it is within the wireless range.
- Restart your computer.

### 5.2 Erratic Cursor Movement

- Clean the optical sensor on the bottom of the mouse.
- Ensure you are using the mouse on a suitable surface. While the BlueLED sensor works on various surfaces, highly reflective or transparent surfaces may cause issues. Try using a mouse pad.
- Check for any obstructions between the mouse and the receiver.

### 5.3 Buttons Not Functioning Correctly

- If you have customized button functions, ensure the 'ELECOM Mouse Assistant' software is running and configured correctly.
- Test the mouse on another computer to determine if the issue is with the mouse or the computer's settings.

## 6. SPECIFICATIONS

Feature	Specification
Interface	USB
Connector Type	USB (A) Male
Compatible Devices	Windows OS, macOS, Chrome OS equipped with a USB port
Compatible OS	Windows 11/10 S/10/RT8.1/8.1/7/Vista, macOS Sonoma 14/Ventura 13/Monterey 12/Big Sur 11, Chrome OS
Resolution	2000 DPI
Communication Method	GFSK
Radio Frequency	2.4GHz band
Radio Wave Range (Non-magnetic surface)	Approx. 10m
Radio Wave Range (Magnetic surface)	Approx. 3m
Reading Method	Optical Sensor
LED Color	Blue
Button Count	5 (including wheel button)
Wheel Count	1
Receiver Storage	Yes
Continuous Operation Time	Approx. 370 hours
Continuous Standby Time	Approx. 1041 days
Estimated Battery Usage Period	Approx. 722 days
Power Supply (Mouse)	One AA alkaline, manganese, or nickel-metal hydride battery
Rated Voltage (Mouse)	1.5V
Color	White (Face)

Feature	Specification
External Dimensions (Mouse Body)	W 73.8 × D 109.6 × H 40.8 mm
Size Classification	M-size
Weight (Mouse Body)	Approx. 75g (excluding battery)
External Dimensions (Receiver)	W 15.0 × D 18.0 × H 6.0 mm
Weight (Receiver)	Approx. 2g
Accessories	AA alkaline battery for operation check ×1, User's Manual ×1



Image 6.1: Physical dimensions and weight of the mouse.

7. WARRANTY

This product comes with a **6-month warranty period** from the date of purchase. Please retain your proof of purchase for warranty claims. The warranty covers manufacturing defects under normal use conditions. It does not cover damage caused by misuse, accidents, unauthorized modifications, or normal wear and tear.

## 8. SUPPORT

For product inquiries, technical support, or warranty claims, please contact the ELECOM General Information Center:

**Telephone:** 0570-084-465

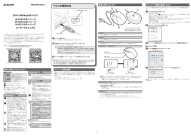
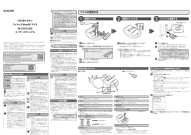


**FAX:** 0570-050-012

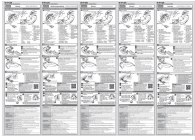
**Reception Hours:** 10:00 - 19:00 (Open all year round)

You can also visit the official ELECOM website for additional resources, FAQs, and driver downloads.

© 2025 ELECOM Co., Ltd. All rights reserved.

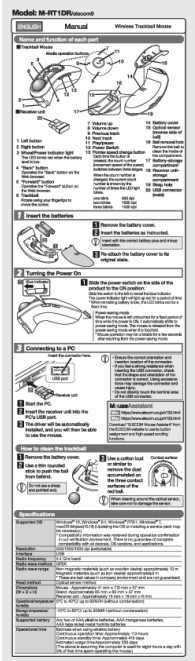
### Related Documents - M-XGM10DBWH

	<p><a href="#">ELECOM EX-G USB BlueLED Mouse User's Manual</a></p> <p>User's manual for ELECOM EX-G USB BlueLED Mouse series (M-XGS10UB, M-XGM10UB, M-XGL10UB) covering setup, usage, customization with Mouse Assistant, troubleshooting, and specifications.</p>
	<p><a href="#">ELECOM M-CAD01DBBK CAD Wireless BlueLED Mouse User Manual</a></p> <p>User manual for the ELECOM M-CAD01DBBK CAD Wireless BlueLED Mouse, detailing setup, usage, troubleshooting, and specifications.</p>
	<p><a href="#">ELECOM M-RT1DRBK Ergonomic Mouse - User Manual and Safety Guide</a></p> <p>Official user manual and safety information for the ELECOM M-RT1DRBK ergonomic computer mouse. Learn about connection, features, and important safety precautions. This guide consolidates information from various language versions into a primary English document.</p>
 <div><p>M-XGS31UBSK series (10, 4000) M-XGM31UBSK series (10, 4000) M-XGL31UBSK series (10, 4000) M-XGXL31UBSK series (10, 4000) User Manual</p><p>Copyright © 2025 ELECOM Co., Ltd. All rights reserved.</p><p>Precautions</p><p>This manual describes the basic operation and should be read for safe operation of this product.</p></div>	<p><a href="#">ELECOM Wired Mouse User Manual - Setup, Features, and Troubleshooting</a></p> <p>Comprehensive user manual for ELECOM wired mice (M-XGS31UBSK, M-XGM31UBSK, M-XGL31UBSK, M-XGXL31UBSK series). Learn how to connect, customize buttons, adjust settings for Windows, macOS, and ChromeOS, and find troubleshooting tips.</p>



## [ELECOM M-RT1DR Wireless Trackball Mouse User Manual and Guide](#)

Comprehensive user manual for the ELECOM M-RT1DR Wireless Trackball Mouse, covering setup, features, specifications, cleaning, and safety precautions.



## [ELECOM M-RT1DR Wireless Trackball Mouse User Manual and Specifications](#)

Comprehensive user manual for the ELECOM M-RT1DR Wireless Trackball Mouse, detailing setup, operation, cleaning procedures, and technical specifications for optimal use.