

Scheppach MTE380

Scheppach MTE380 Electric Tiller User Manual

Model: MTE380

1. INTRODUCTION

Thank you for choosing the Scheppach MTE380 Electric Tiller. This manual provides essential information for the safe assembly, operation, and maintenance of your new electric tiller. Please read these instructions thoroughly before using the machine to ensure proper function and to prevent injury or damage.

The Scheppach MTE380 is designed for loosening soil, preparing seedbeds, incorporating compost or fertilizer, and removing weeds in small to medium-sized gardens. Its powerful 1050W motor and robust blades make it an efficient tool for various gardening tasks.

2. SAFETY INSTRUCTIONS

Always observe the following safety precautions to reduce the risk of electric shock, fire, and serious injury:

- **Read the Manual:** Familiarize yourself with all controls and proper use before operating the tiller.
- **Personal Protective Equipment (PPE):** Always wear sturdy footwear, long trousers, and eye protection. Gloves are recommended.
- **Electrical Safety:** Ensure the power supply matches the specifications on the rating plate. Use only outdoor-rated extension cords that are undamaged. Keep the power cord clear of the tines and away from water. Disconnect from power before cleaning, maintenance, or if the machine is left unattended.
- **Work Area:** Keep children, pets, and bystanders away from the operating area. Clear the work area of stones, sticks, wires, and other debris that could be thrown by the tines.
- **Operation:** Do not operate the tiller in wet conditions or rain. Maintain a firm grip on both handles. Do not overreach. Operate the tiller by pulling it backward towards you, rather than pushing it forward, to maintain better control and prevent it from running away.
- **Maintenance:** Regularly inspect the machine for damage. Replace worn or damaged parts immediately.

3. PRODUCT OVERVIEW

The Scheppach MTE380 Electric Tiller consists of several key components designed for efficient soil cultivation.

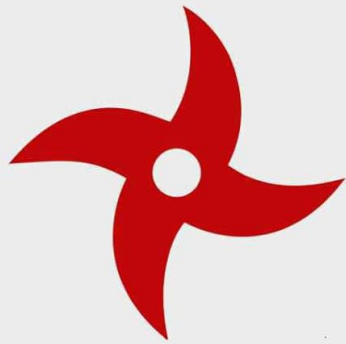


Figure 3.1: Overall view of the Scheppach MTE380 Electric Tiller, showing its compact design and handles.

Key Components:

- **Motor Housing:** Contains the 1050W electric motor.
- **Handles:** Ergonomically designed for comfortable operation, featuring a soft-start safety switch and cable strain relief.
- **Tines/Blades:** 16 robust steel blades for effective soil loosening.
- **Safety Switch:** Integrated into the handle for immediate power cut-off.
- **Gearbox:** High-quality die-cast aluminum gearbox for durability.

16 Messer aus Stahlblech



Leichtgewicht



Vor dem Erdfräsen

starke Verwurzelung,
Moos und Rasenfilz.



Nach dem Erdfräsen

aufgelockert und bereit
zur Bepflanzung.

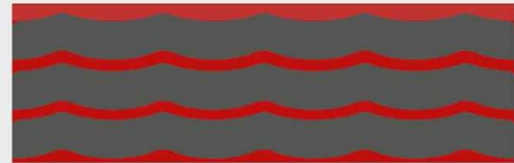


Figure 3.2: Detail of the comfortable handle with soft-start safety switch and cable strain relief for secure operation.

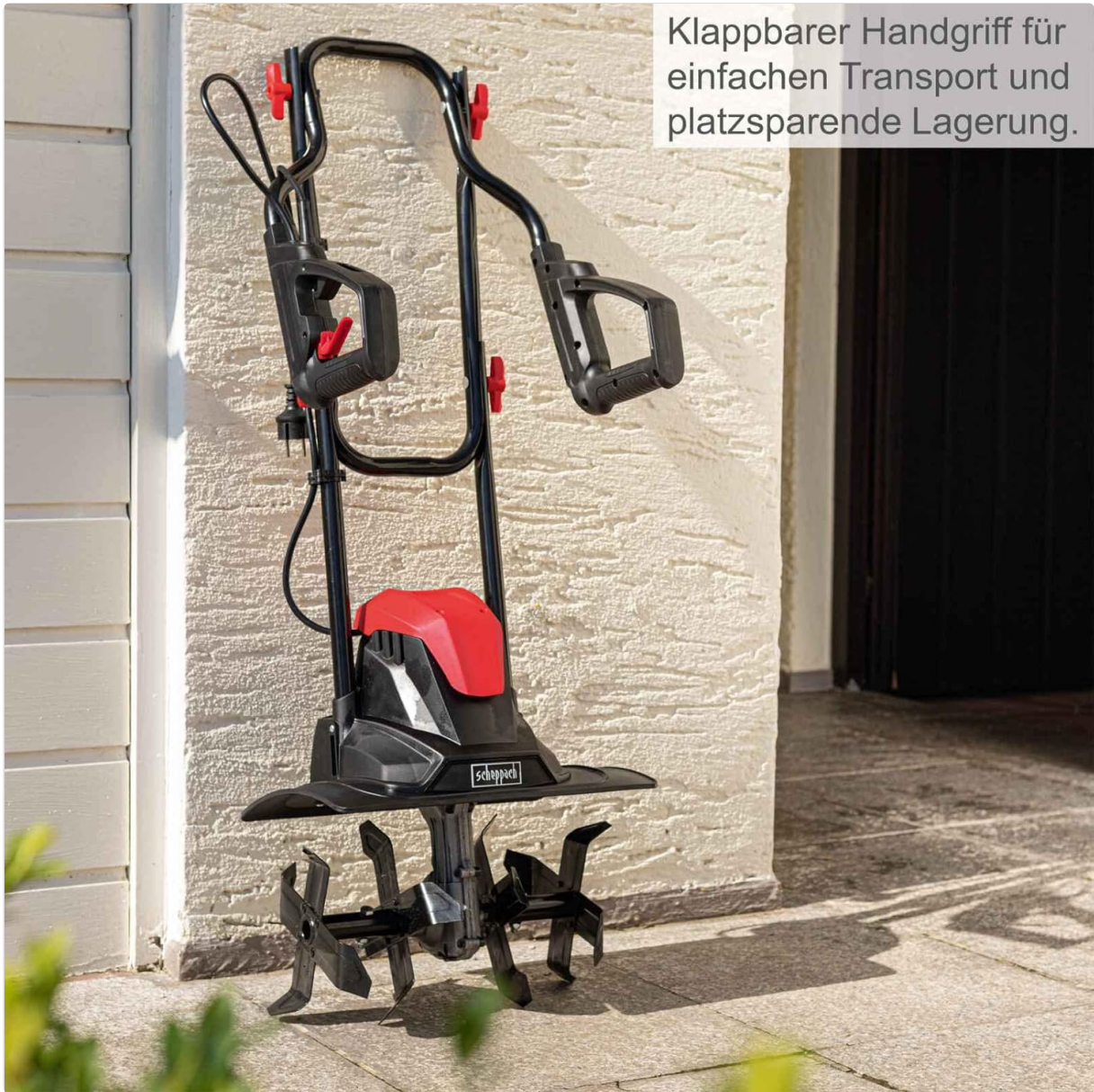


Figure 3.3: View of the robust die-cast aluminum gearbox, ensuring durability and efficient power transfer to the tines.

4. SETUP AND ASSEMBLY

The Scheppach MTE380 is designed for quick and easy assembly. Follow these steps to prepare your tiller for use:

1. **Unpack:** Carefully remove all components from the packaging. Check for any damage or missing parts.
2. **Handle Assembly:** Attach the upper handle section to the lower handle section using the provided fasteners. Ensure all connections are secure. The handles are foldable for transport and storage.
3. **Cable Management:** Secure the power cable along the handle using the integrated cable clips or ties to prevent it from interfering with operation or getting caught in the tines. Ensure the cable strain relief is properly engaged.
4. **Initial Inspection:** Before connecting to power, ensure all bolts and screws are tightened, and the tines are free to rotate.

Komfortable Handgriffe: Soft-Start mit Schutzschalter und Kabelzugentlastung

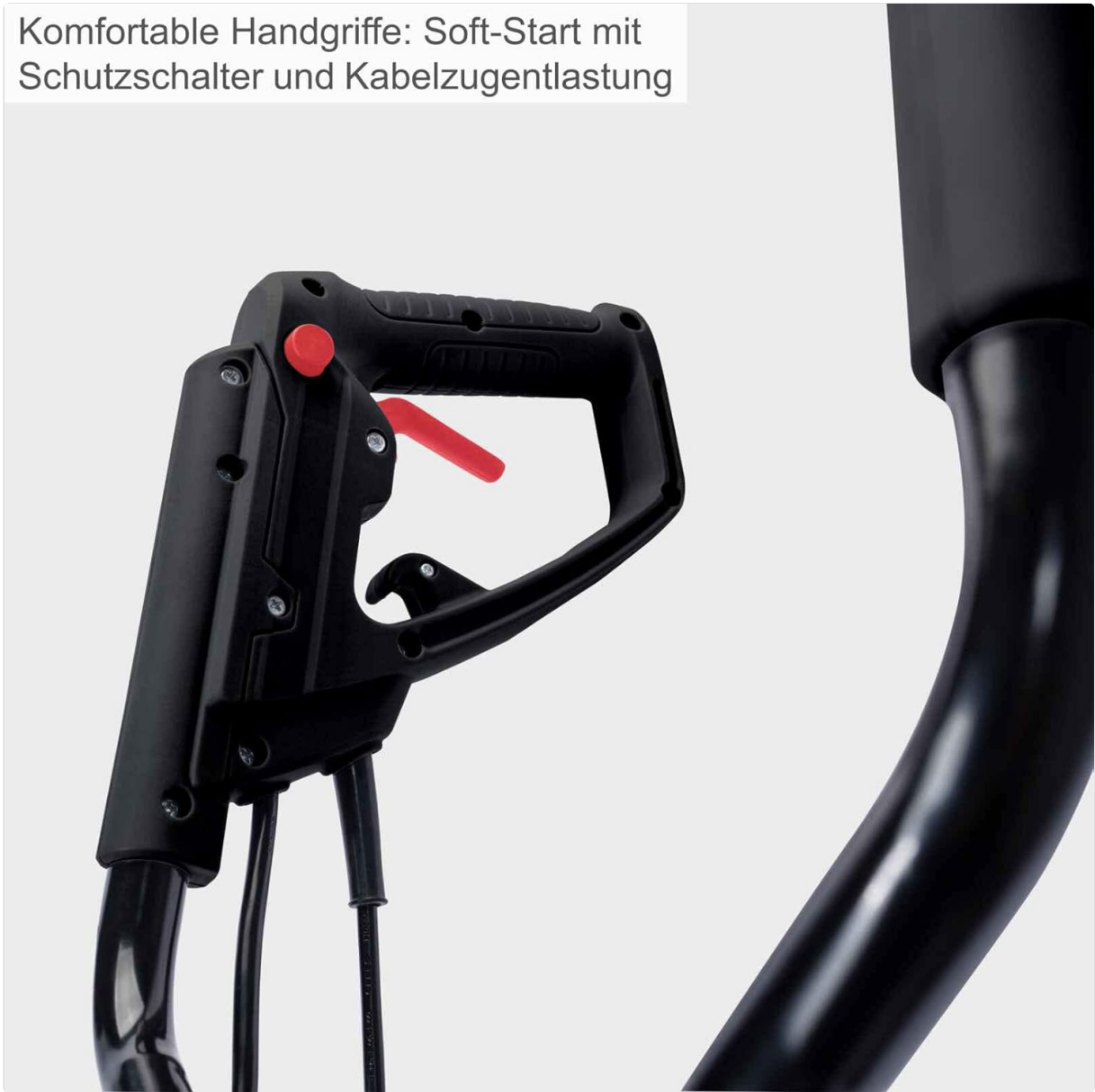


Figure 4.1: The tiller shown with its handle folded, illustrating its compact design for easy transport and space-saving storage.

5. OPERATING INSTRUCTIONS

Follow these guidelines for effective and safe operation of your electric tiller.

5.1 Before Starting

- Ensure the work area is clear of debris.
- Wear appropriate safety gear.
- Connect the tiller to a suitable outdoor-rated extension cord, ensuring the cord is positioned to avoid contact with the tines.

5.2 Starting and Stopping

- **To Start:** Press and hold the safety switch, then squeeze the operating lever. The tines will begin to rotate.
- **To Stop:** Release the operating lever. The tines will stop.

5.3 Tilling Technique

For best results and control, operate the tiller by pulling it backward towards you. This method allows for better control over the tilling depth and direction, and prevents the machine from surging forward unexpectedly.



Figure 5.1: A user demonstrating the proper technique for operating the electric tiller, pulling it backward to cultivate the soil.

- Make shallow passes first, gradually increasing depth with subsequent passes. The maximum working depth is 22 cm.
- Move at a steady, controlled pace. Do not force the machine.
- If the tines become jammed, immediately release the operating lever and disconnect the power supply before clearing the obstruction.

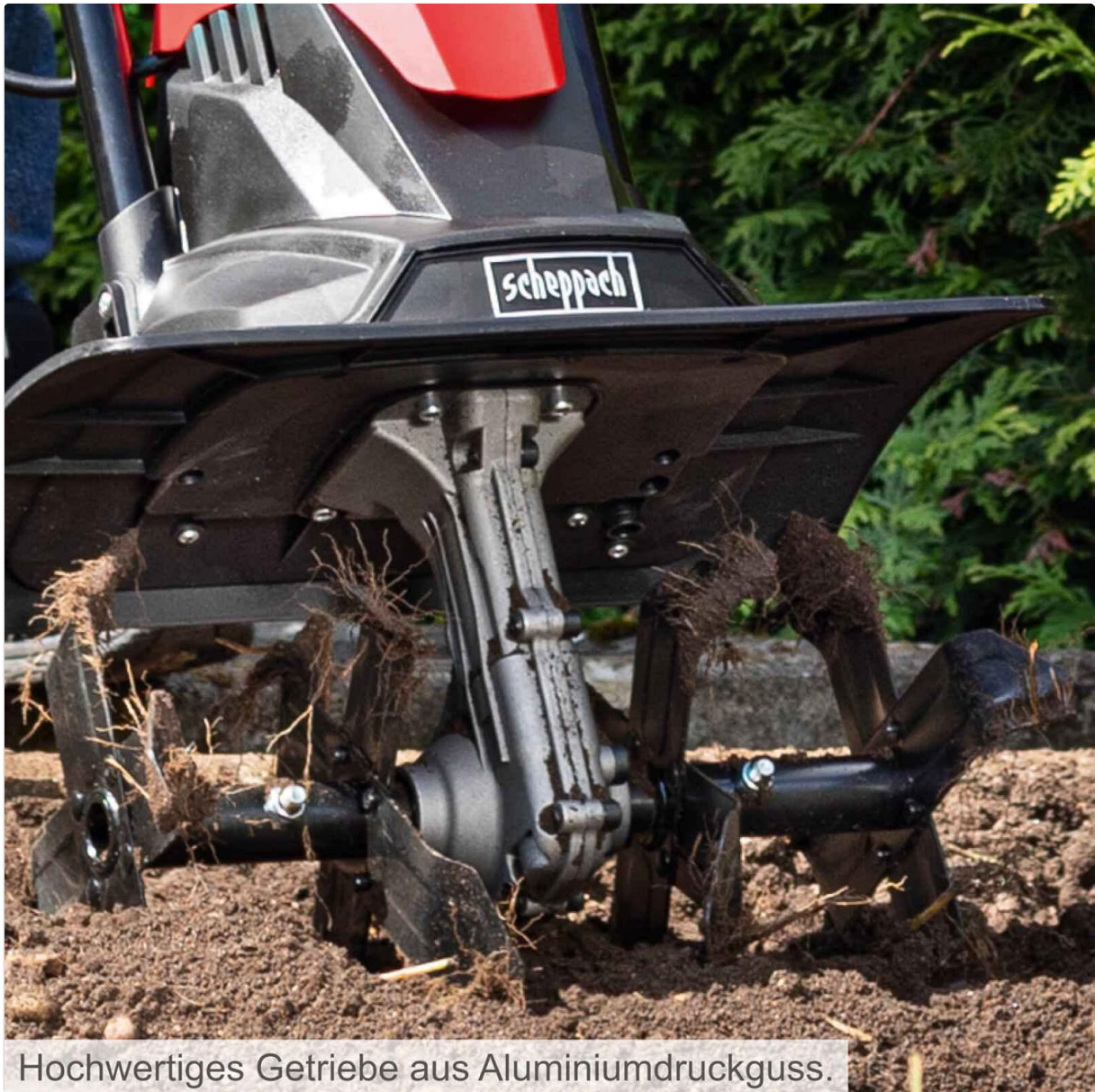


Figure 5.2: The 16 robust steel blades effectively breaking up and aerating the soil during operation.

5.4 Applications

The MTE380 is suitable for various tasks:

- **Soil Loosening:** Breaking up compacted soil.
- **Weed Removal:** Effectively dislodging weeds and their roots.
- **Seedbed Preparation:** Creating a fine, aerated soil structure for planting.
- **Fertilizer Incorporation:** Mixing compost or fertilizer into the soil.



Figure 5.3: Visual representation of the tiller's versatility in different gardening applications.

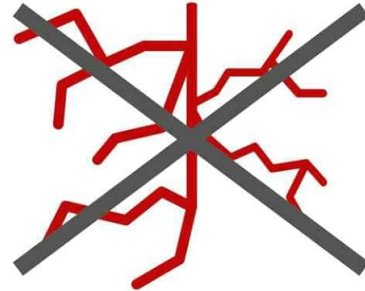


ANWENDUNGSBEISPIELE GEEIGNET FÜR

Bodenauflockerung



Unkraut entfernen



Saatvorbereitung



Dünger einarbeiten



Figure 5.4: Comparison of soil structure before tilling (compacted, rooted) and after tilling (loosened, aerated).

6. MAINTENANCE AND STORAGE

Regular maintenance ensures the longevity and safe operation of your tiller.

6.1 Cleaning

- Always disconnect the power supply before cleaning.
- Remove soil, plant debris, and roots from the tines and motor housing using a brush or damp cloth. Do not use water jets or harsh chemicals.
- Inspect the tines for wear or damage.

6.2 Storage

- Clean the tiller thoroughly before storing.
- Store the tiller in a dry, well-ventilated area, away from direct sunlight and extreme temperatures.
- The foldable handle allows for compact storage.
- Keep out of reach of children.

7. TROUBLESHOOTING

This section addresses common issues you might encounter with your Scheppach MTE380 Electric Tiller.

Problem	Possible Cause	Solution
Tiller does not start.	No power supply; Safety switch not engaged; Operating lever not squeezed.	Check power connection and extension cord; Ensure safety switch is pressed and operating lever is squeezed simultaneously.
Tines are not rotating or rotating slowly.	Tines jammed by debris; Overload; Loose connection.	Disconnect power, clear debris from tines; Reduce load by taking shallower passes; Check power connections.
Excessive vibration or noise.	Damaged or bent tines; Loose components.	Disconnect power, inspect tines for damage and replace if necessary; Check all fasteners for tightness.

If you encounter problems not listed here or if the suggested solutions do not resolve the issue, please contact customer support.

8. TECHNICAL SPECIFICATIONS

Specification	Value
Model Number	MTE380
Brand	Scheppach
Power Source	Corded Electric
Power	1050W (1 kW)
Working Width	36 cm
Working Depth	22 cm max
Number of Blades	16
Item Weight	7.4 Kilograms
Manufacturer Part Number	MTE380

9. WARRANTY AND SUPPORT

Scheppach products are manufactured to high-quality standards. In the unlikely event of a defect, please refer to your purchase documentation for warranty details. For technical support, spare parts, or service inquiries, please contact your retailer or the official Scheppach customer service. Always provide the model number (MTE380) and serial number (if applicable) when contacting support.