

## deleyCON MK4209

# deleyCON CAT6a Flush-Mounted Network Socket Set (MK4209) Instruction Manual

Model: MK4209

## INTRODUCTION

This manual provides detailed instructions for the installation, operation, and maintenance of the deleyCON CAT6a Flush-Mounted Network Socket Set. This set is designed to provide a secure and reliable network connection for both professional and home environments. It includes a network socket with an RJ45 port and a Keystone module for connecting network raw cables.

## PACKAGE CONTENTS

Verify that all components are present in your package:

- 1x deleyCON CAT6a Flush-Mounted Network Socket
- 1x deleyCON CAT6a Keystone Module (STP Shielded, Metal Housing)
- 1x Cable Tie (for securing the keystone module)



**Image:** Overview of the deleyCON CAT6a Network Socket Set components, showing the flush-mounted socket, the keystone module, and a cable tie. Dimensions are also indicated.

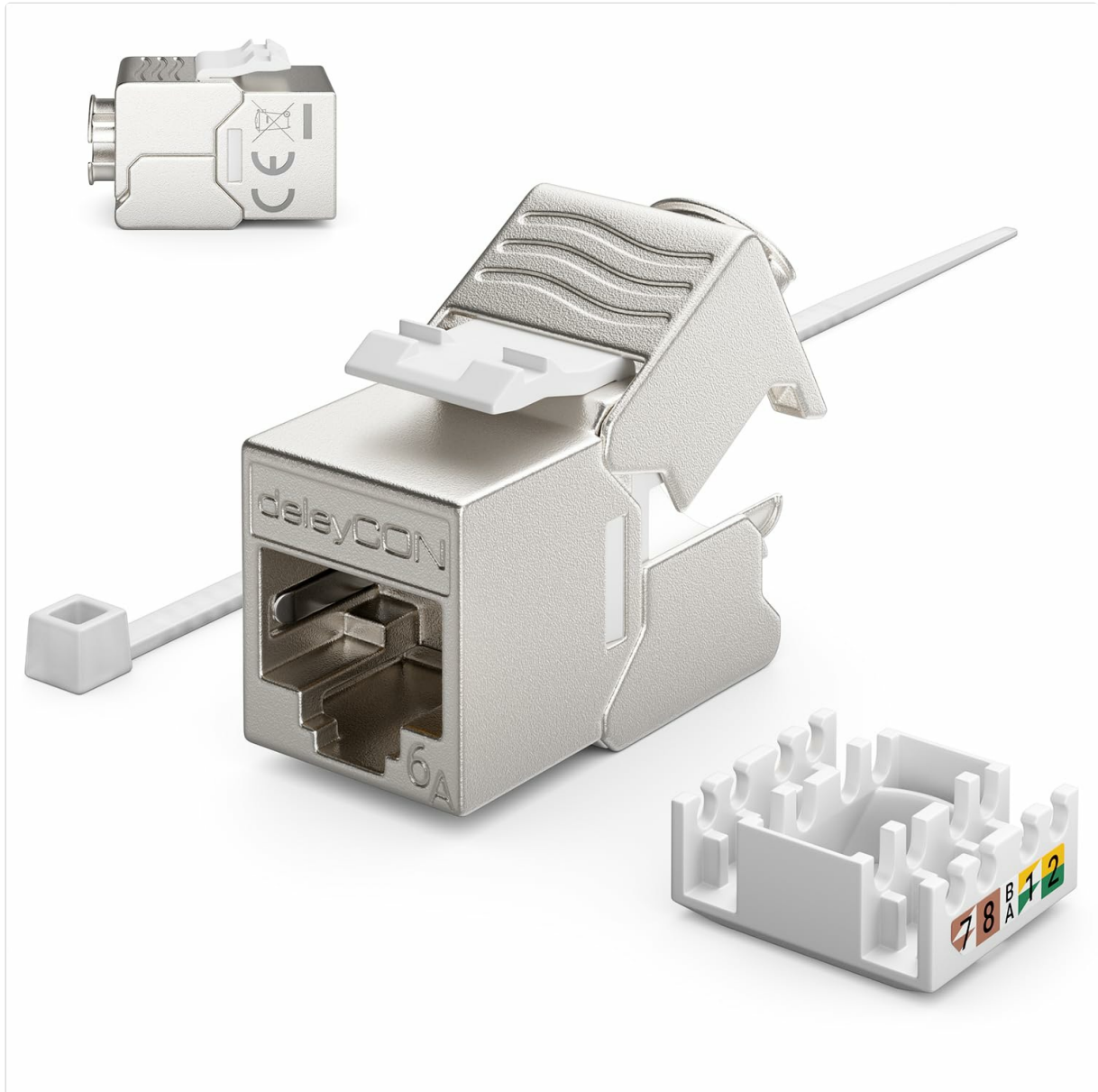
## SPECIFICATIONS

<b>Model Number:</b>	MK4209
<b>CAT Variant:</b>	CAT 6a (compatible with CAT5, CAT5e, CAT6, CAT7)
<b>Shielding:</b>	STP Shielded (Keystone Module)
<b>Network Socket Connection:</b>	1x RJ45 port for patch cable
<b>Keystone Module Connection:</b>	RJ45 for network raw cable
<b>Mounting Type:</b>	Flush-mounted
<b>Housing Material:</b>	Metal (Keystone Module)
<b>Approximate Package Dimensions:</b>	8.5 x 8.5 x 5 cm
<b>Approximate Weight:</b>	85 g

## SETUP AND INSTALLATION

Follow these steps for proper installation of your deleyCON network socket set. Ensure power is disconnected before beginning any electrical work.

### 1. Prepare the Keystone Module



**Image:** The deleyCON CAT6a Keystone Module, showing the wiring block detached and a cable tie for securing the cable.

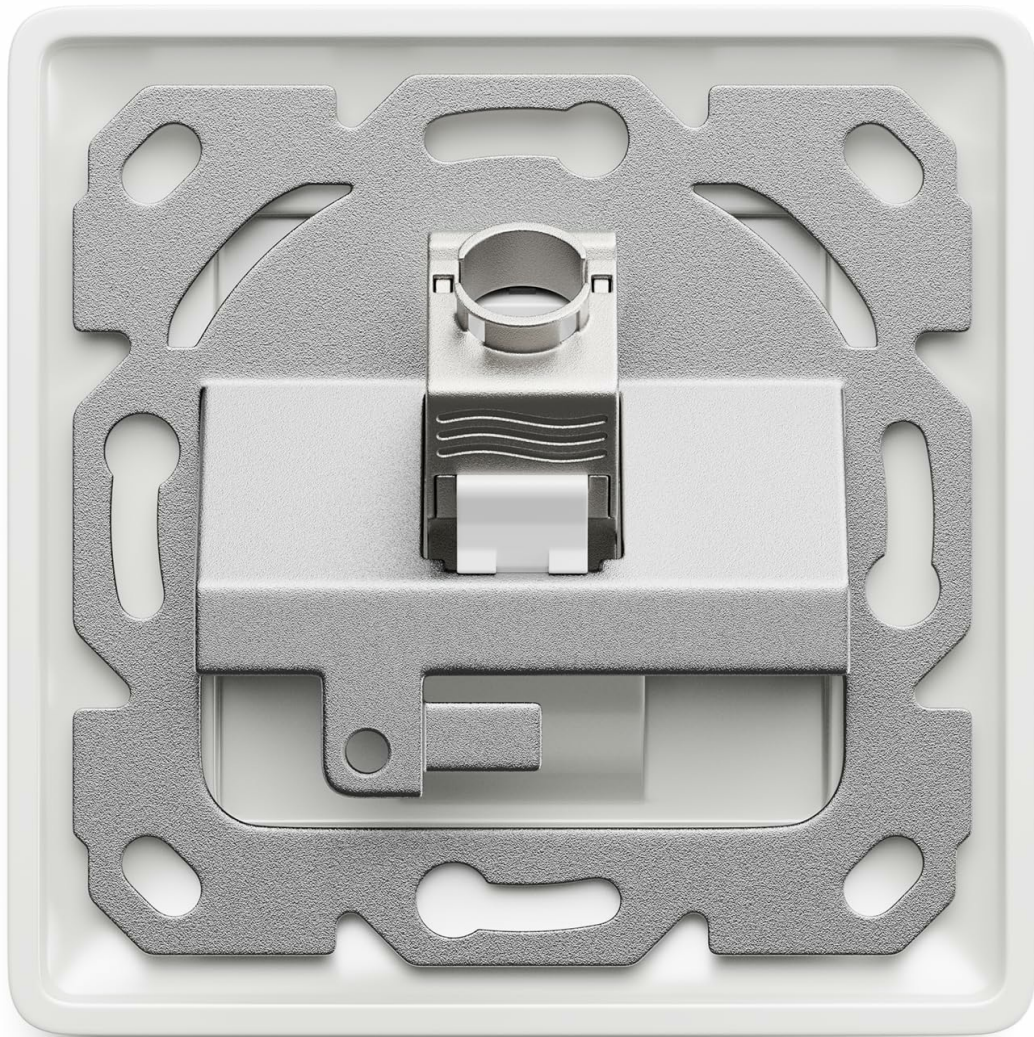
1. Carefully detach the wiring block from the keystone module.
2. Strip approximately 2-3 cm of the outer jacket from your network raw cable (e.g., CAT6a). Do not strip the individual wire insulation.
3. Following the color code diagram on the wiring block (T568A or T568B, typically T568B for most installations), insert each individual wire into its corresponding slot. Ensure the wires are fully seated.
4. Use a punch-down tool to secure the wires and trim any excess. If a punch-down tool is not available, some keystone modules allow for tool-less termination by pressing the cover firmly.
5. Once all wires are terminated, reattach the wiring block to the keystone module. Ensure it clicks securely into place.
6. Use the provided cable tie to secure the network cable to the keystone module, providing strain relief.

## 2. Assemble the Network Socket



**Image:** An exploded diagram illustrating how the keystone module, mounting frame, and front cover assemble to form the complete flush-mounted network socket.

7. Insert the prepared keystone module into the metal mounting frame. It should snap into place.
8. Attach the front cover plate to the mounting frame. Ensure it aligns correctly and snaps securely.



**Image:** Rear view of the assembled network socket, demonstrating how the keystone module is integrated into the mounting frame.

### 3. Mount the Socket





**Image:** The front view of the deleyCON flush-mounted network socket's mounting frame, showing its design for integration into a wall box.

9. Carefully push the assembled network socket into a standard flush-mounted wall box.
10. Secure the socket to the wall box using appropriate screws (not included). Ensure it is firmly seated and level.
11. Attach the outer decorative frame (if applicable and separate) to complete the installation.

## OPERATING INSTRUCTIONS

---

Once the deleyCON CAT6a Network Socket is installed, its operation is straightforward:

1. Connect one end of a standard RJ45 patch cable (e.g., CAT6a) to the RJ45 port on the installed network socket.
2. Connect the other end of the patch cable to your network device (e.g., computer, router, switch).
3. Verify network connectivity on your device.



**Image:** A deleyCON network socket installed in a wall, with an RJ45 patch cable plugged in, demonstrating typical usage.

## MAINTENANCE

---

The deleyCON CAT6a Network Socket requires minimal maintenance:

- Keep the RJ45 port clean and free from dust. Use compressed air if necessary.
- Avoid applying excessive force when inserting or removing patch cables to prevent damage to the port.
- Periodically check the physical connection for any signs of wear or damage.

## TROUBLESHOOTING

---

If you experience issues with your network connection, consider the following troubleshooting steps:

- **No Network Connectivity:**
  - Ensure both ends of the patch cable are securely connected.
  - Test the patch cable with another device or replace it to rule out a faulty cable.
  - Verify that the network raw cable was correctly terminated in the keystone module according to

the T568A or T568B standard. Incorrect wiring is a common cause of connectivity issues.

- Check your network equipment (router, switch) to ensure it is powered on and functioning correctly.

- **Slow Network Speed:**

- Ensure all components in your network chain (cables, switches, router) are rated for CAT6a or higher to achieve optimal speeds.
- Check for any kinks or damage in the network raw cable or patch cable.
- Verify that the keystone module's shielding is properly grounded if applicable, to minimize interference.

## SUPPORT

---

For further assistance or technical support, please refer to the deleyCON official website or contact their customer service department. Keep your product model number (MK4209) handy when seeking support.