



[Manuals.plus](#) /

> [Ctronics](#) /

> Ctronics Outdoor Security Camera Model 285C User Manual

Ctronics 285C

Ctronics Outdoor Security Camera Model 285C User Manual

Model: 285C

1. INTRODUCTION

This user manual provides detailed instructions for the installation, setup, operation, and maintenance of your Ctronics Outdoor Security Camera Model 285C. Please read this manual thoroughly before using the product to ensure proper functionality and safety. Keep this manual for future reference.

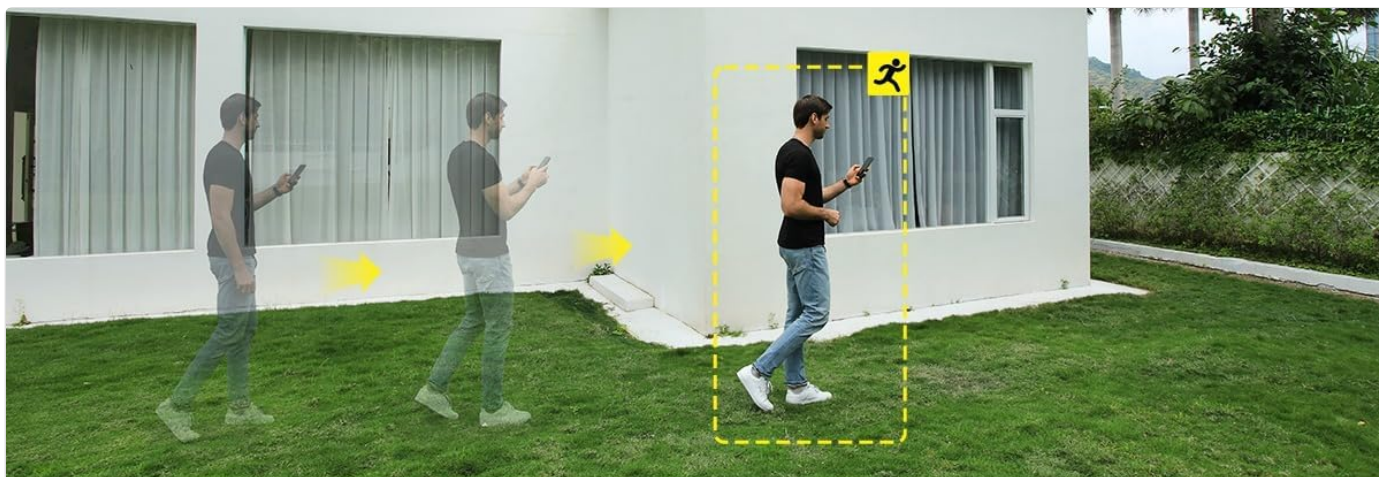
2. PACKAGE CONTENTS

Verify that all items listed below are included in your package. If any items are missing or damaged, please contact Ctronics customer support.

- Ctronics Outdoor Security Camera (Model 285C)
- Power Adapter (DC 12V)
- Mounting Screw Kit
- Waterproof Kit for Network Cable (if applicable)
- Quick Start Guide

3. PRODUCT OVERVIEW

Familiarize yourself with the components of your Ctronics security camera.



Human Detection & Auto Tracking

Adjustable Sensitivity and Customizable Detection Zones

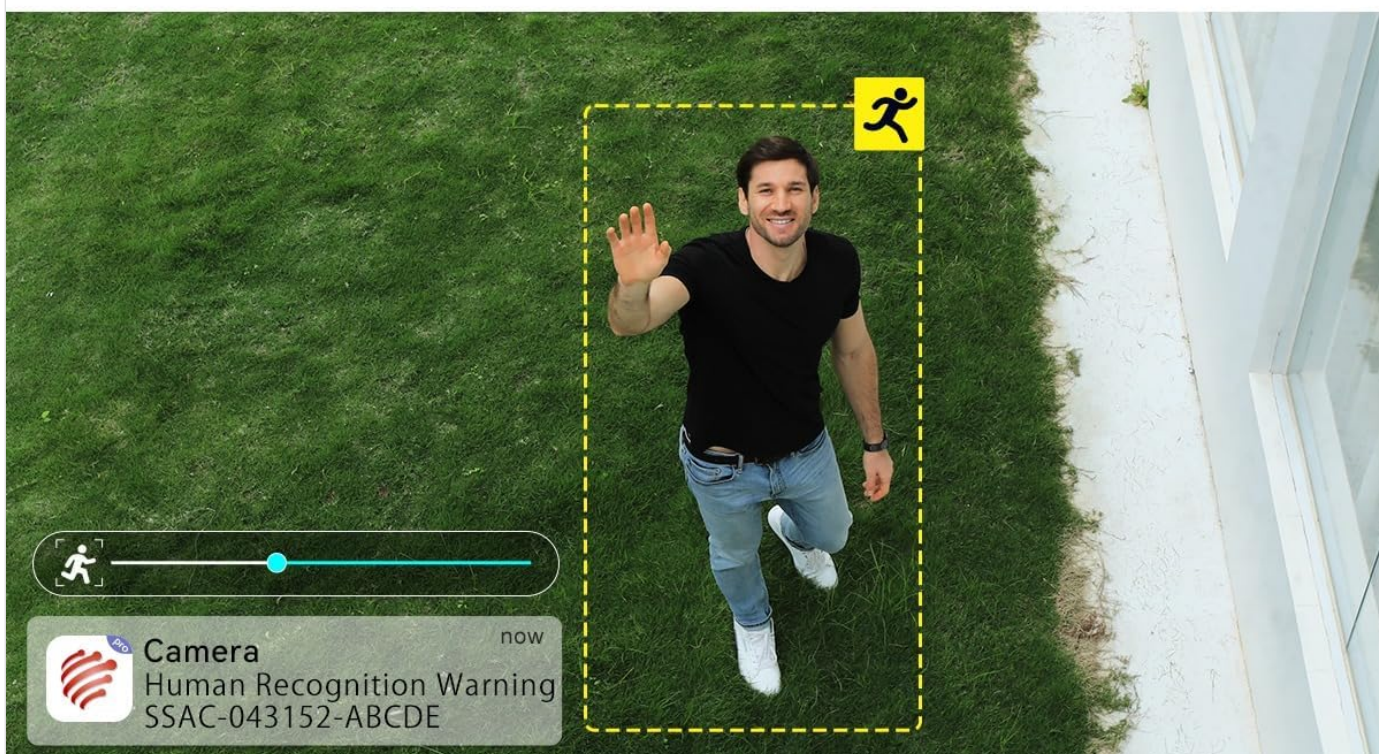


Figure 3.1: Front view of the Ctronics Outdoor Security Camera Model 285C, showing the lens, IR LEDs, and housing.

- **Lens:** Captures video footage.
- **Infrared (IR) LEDs:** Provide illumination for night vision.
- **Microphone:** Captures audio for two-way communication and recording.
- **Speaker:** Outputs audio for two-way communication.
- **Antennas:** For Wi-Fi connectivity.
- **SD Card Slot:** For local storage of recorded video (Micro SD card not included).
- **Reset Button:** Used to restore factory settings.
- **Power Port:** Connects to the DC 12V power adapter.

4. INSTALLATION

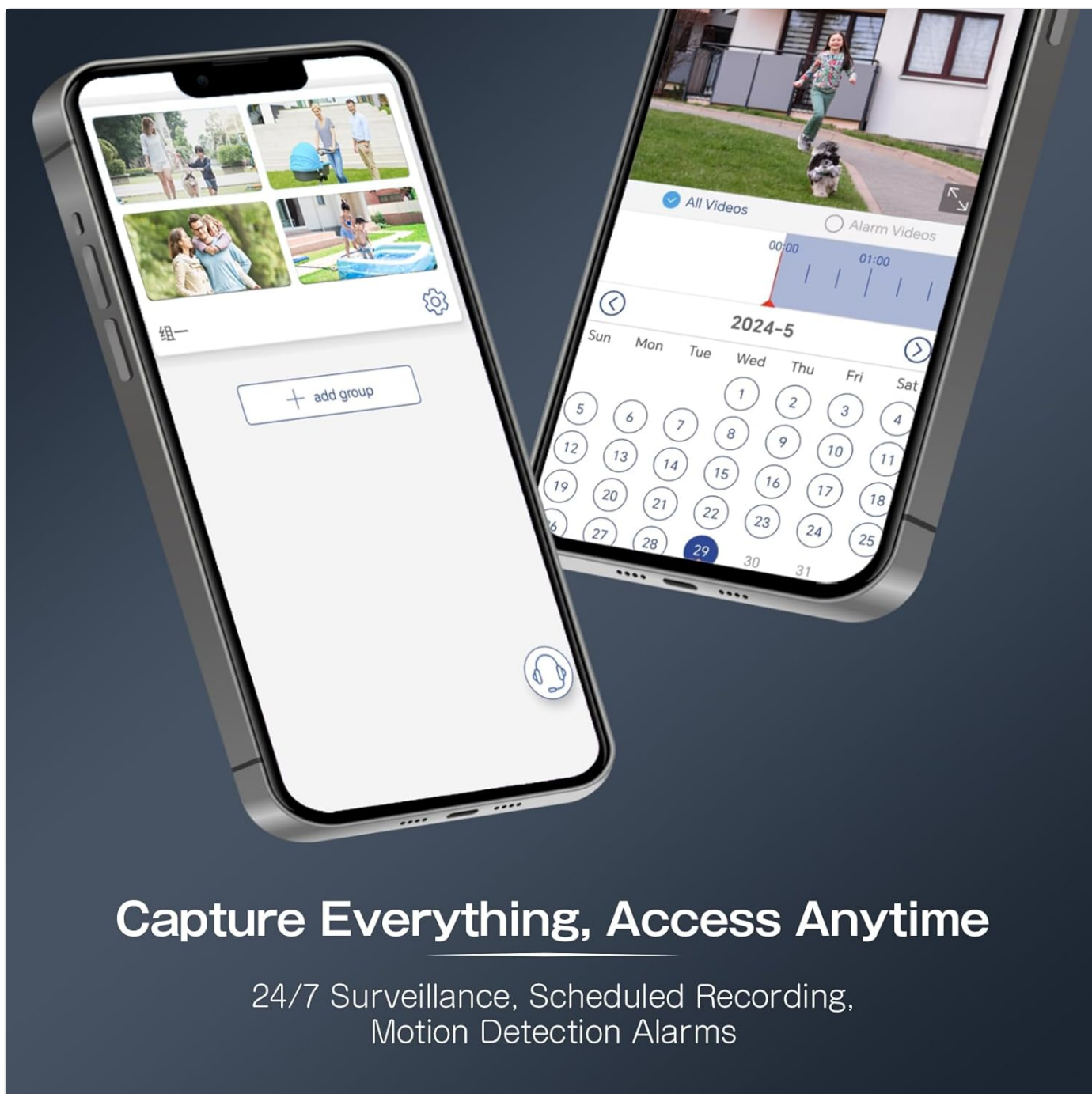
Proper installation ensures optimal performance and durability of your camera.

4.1 Mounting Location

- Choose a location with a strong Wi-Fi signal.
- Ensure the camera has a clear, unobstructed view of the area you wish to monitor.
- Position the camera within reach of a power outlet.
- The camera is IP66 waterproof, suitable for outdoor use in various weather conditions.

4.2 Mounting Steps

1. Use the provided mounting template (if available) to mark drill holes on the wall or ceiling.
2. Drill holes and insert wall anchors.
3. Secure the camera base using the provided screws.
4. Adjust the camera angle as needed after power-up and setup.



Capture Everything, Access Anytime

24/7 Surveillance, Scheduled Recording,
Motion Detection Alarms

Figure 4.1: The Ctronics camera mounted outdoors, illustrating its 355° pan and 90° tilt capabilities.

5. SETUP

Follow these steps to connect your camera to your network and mobile device.

6.1 Live View and Controls

- Open the Ctronics app and select your camera to view the live feed.
- Use the on-screen joystick or swipe gestures to control the camera's pan (355°) and tilt (90°) movements.
- Utilize the pinch-to-zoom gesture for 5X optical zoom to view details.

Your browser does not support the video tag.

Video 6.1: Demonstration of the Ctronics PTZ Camera's 5X Optical Zoom and movement capabilities. This video illustrates the camera's ability to pan, tilt, and zoom to cover a wide area.

6.2 Night Vision

The camera features both infrared (IR) night vision and color night vision. It automatically switches between modes based on ambient light conditions.

- **IR Night Vision:** Provides clear black-and-white images in complete darkness.
- **Color Night Vision:** Activates when sufficient ambient light is available or when the camera's spotlights are triggered, providing full-color images at night.



30M Color Night Vision
1080P FHD picture quality, better protection.

Figure 6.2: The Ctronics camera providing 30M color night vision, enhancing visibility in low-light conditions.

6.3 Human Detection and Auto Tracking

The camera can intelligently detect human shapes and track their movement within its field of view.

- Enable Human Detection in the app settings to receive alerts specifically for human presence.
- Activate Auto Tracking to have the camera automatically follow detected human movement.
- Adjust sensitivity and define custom detection zones to minimize false alarms.



Figure 6.3: Illustration of the camera's human detection and auto-tracking features, highlighting adjustable sensitivity and customizable detection zones.

6.4 Two-Way Audio

Use the two-way audio feature to communicate with individuals near the camera.

- Tap the microphone icon in the live view interface to speak through the camera's speaker.
- The camera's built-in microphone captures audio from the monitored area.

6.5 Recording and Playback

The camera supports continuous recording, scheduled recording, and motion-triggered recording to a Micro SD card (not included).

- Insert a Micro SD card (up to 64GB recommended) into the designated slot.
- Configure recording settings (continuous, scheduled, event-triggered) within the app.
- Access recorded footage via the app's playback function, using the timeline to navigate.



Figure 6.4: The Ctronics app interface for managing recordings and accessing playback, including scheduled recording and motion detection alarms.

7. MAINTENANCE

Regular maintenance helps ensure the longevity and optimal performance of your camera.

- **Cleaning:** Gently wipe the camera lens and housing with a soft, damp cloth. Avoid abrasive cleaners.
- **Firmware Updates:** Periodically check the Ctronics app for available firmware updates to ensure your camera has the latest features and security enhancements.
- **Connectivity Check:** Regularly verify the camera's Wi-Fi connection and power supply.

8. TROUBLESHOOTING

If you encounter issues, refer to the following common problems and solutions.

Problem	Possible Cause	Solution
Camera not powering on	No power supply; faulty adapter.	Check power connection; try a different outlet or adapter.
Unable to connect to Wi-Fi	Incorrect Wi-Fi password; camera too far from router; 5GHz Wi-Fi network.	Verify password; move camera closer to router; ensure 2.4GHz Wi-Fi is used.
Poor image quality	Dirty lens; low network bandwidth.	Clean the lens; ensure stable internet connection.
Motion detection not triggering	Incorrect sensitivity settings; detection zone not configured.	Adjust sensitivity in app; set up detection zones.
Camera unresponsive	Temporary software glitch.	Perform a factory reset by pressing and holding the reset button for 5-10 seconds.

9. SPECIFICATIONS

Key technical specifications for the Ctronics Outdoor Security Camera Model 285C.

Model	285C
Video Resolution	1080P Full HD
Pan/Tilt Range	Pan 355°, Tilt 90°
Zoom	5X Optical Zoom
Night Vision	Color Night Vision, Infrared Night Vision
Audio	Two-Way Audio
Human Detection	Supported, with Auto Tracking
Storage	Micro SD Card (up to 64GB, not included)
Connectivity	Wi-Fi (2.4GHz)
Power Supply	DC 12V / 12W
Waterproof Rating	IP66
Material	Metal
Compatible OS	iOS, Android

10. WARRANTY AND SUPPORT

Ctronics products come with a standard warranty. For detailed warranty information, product support, or technical assistance, please visit the official Ctronics website or contact their customer service directly. Contact information can typically be found on the product packaging or the Ctronics website.

